

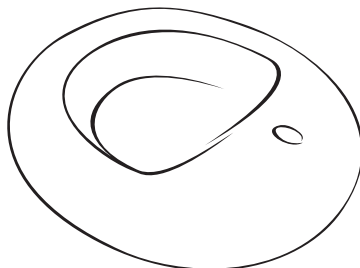
# Banzai®

## AQUA BLAST MOTORIZED BUMPER BOAT™

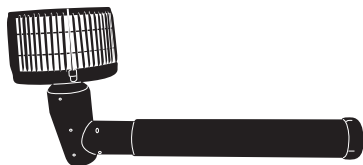
1. Controller Unit With Water Blaster x 1



2. Inflatable Motorized Bumper Boat™ Body x 1



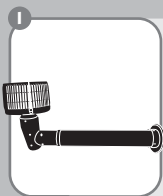
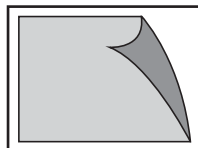
3. Propeller Unit x 1



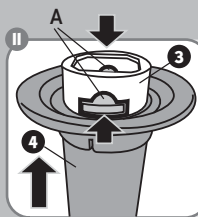
4. Pipe Cover x 1



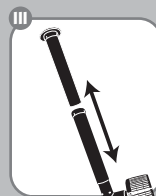
5. Repair Patch x 1



Parts 3 and 4 are shipped together and must be separated before assembling this item.



Press the release latch (A) and push 3 downward while pulling up part 4.



### IMPORTANT SAFETY INSTRUCTIONS.

PLEASE READ AND SAVE THESE INSTRUCTIONS BEFORE SETUP AND USE.  
KEEP THESE INSTRUCTIONS IN A SAFE PLACE FOR FUTURE REFERENCE.

FOR AGES 5-10

ADULT SET UP IS REQUIRED.

## ! Safety Information

### WARNING!

To avoid the risk of serious injury or death;

- Intended for only children aged 5-10.
- Motorized Bumper Boat™ is intended to be used as a toy and not as a personal flotation device.
- Do not hang on or stand on the Motorized Bumper Boat™ when playing.
- Do not use a high-pressure pump to inflate.
- Do not use an electric air pump if water or moisture is present. This may result in electric shock.
- The total weight limit for the Motorized Bumper Boat™ is 100 lbs (45 kg), and it is designed to hold one child.
- Use product in swimming pool only.
- Read all instructions before using the Motorized Bumper Boat™.
- Do not shoot water blaster cannon directly at person's eyes or face.
- Never drive Motorized Bumper Boat™ over the swimmers.
- Do not dive underneath Motorized Bumper Boat™.
- Stop using Motorized Bumper Boat™ if there is any damage to the propeller safety cage.
- Disregard of and not following the instructions from manual and warnings could result in injury or death, especially for children.
- All inflatables are temperature sensitive, therefore never unfold or inflate in temperatures below 50°F.
- Once inflated, make sure that the product does not come in contact with stones, gravel or other sharp objects, which could puncture the inflatable.
- To extend the life of the Motorized Bumper Boat™, avoid any unnecessary overexposure to direct sunlight. Excessive sun exposure may prevent premature material fatigue and may cause leakage.

While every attempt is made to embody the highest degree of protection in all equipment, we cannot guarantee freedom from injury. The user assumes all risk of injury resulting from use. All merchandise is sold on this condition, which no representative of the company can waive or change.

Once assembled according to the instructions provided, confirm that this battery-operated toy is fully functional before placing in the water.

This is not a lifesaving device. Do not leave a child unattended while the device is in use.

Only to be used in water in which the child can comfortably stand up.

For use in pools only and under adult supervision.

### REPAIR PATCH INSTRUCTIONS

For your convenience, a repair patch has been included to repair holes in the inflatable section.

Do not use the patch for holes or rips on the seam.

In the event of an accidental puncture, cut out a suitably sized patch. Make sure you round the corners of your repair patch to avoid peeling. Make sure the area to be patched is clean and dry. Press patch firmly over the puncture. Do not inflate for 20 minutes.

PLEASE RETAIN THIS INFORMATION  
FOR FUTURE REFERENCE.  
COLORS AND CONTENT MAY VARY.

# Banzai®

CHANGHUANG ROAD,  
CHANGPING, DONGGUAN, CHINA  
ALL RIGHTS RESERVED

MADE IN CHINA

www.toysinquiry.com

## Safety Information

### BATTERY WARNINGS!

- Only adults should replace batteries.
- Alkaline batteries recommended.
- Do not use rechargeable batteries.
- Non-rechargeable batteries are not to be recharged.
- Do not mix old and new batteries.
- Do not mix alkaline, standard (carbon-zinc), or rechargeable (nickel-cadmium) batteries.
- Only batteries of the same or equivalent type as recommended are to be used.
- Batteries are to be inserted with the correct polarity.
- Exhausted batteries are to be removed from the toy.
- The supply terminals are not to be short-circuited.
- Remove batteries from the product before extended storage.
- Batteries have to be placed by respecting the polarity indicated on the toy and on the battery. An incorrect location can either damage the toy, cause leaks at the batteries level, or, to an extreme degree, set the battery on fire or explode.
- Never throw batteries into fire, they could explode.
- Please keep this information for future reference.



### BEFORE RETURNING TO STORE

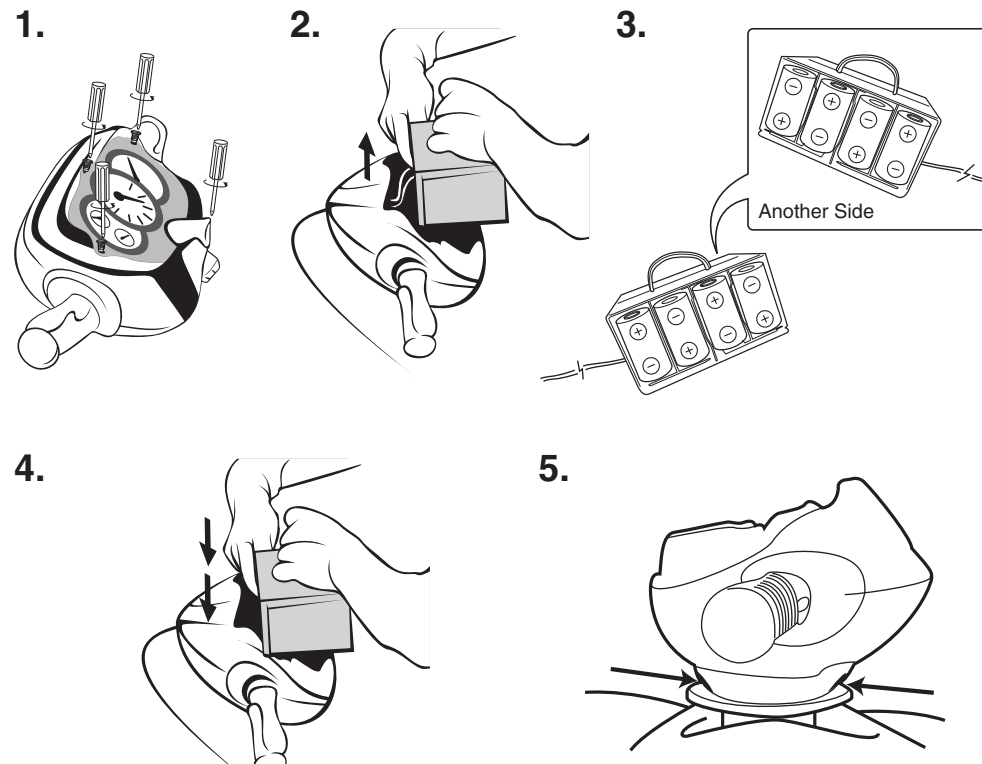
PLEASE VISIT  
THE CUSTOMER SERVICE WEBSITE  
BELOW FOR IMMEDIATE ASSISTANCE  
REGARDING QUESTIONS OR  
PROBLEMS WITH THIS PRODUCT.

[www.toysinquiry.com](http://www.toysinquiry.com)

OR

1-800-434-6178

## Installing / Replacing Batteries

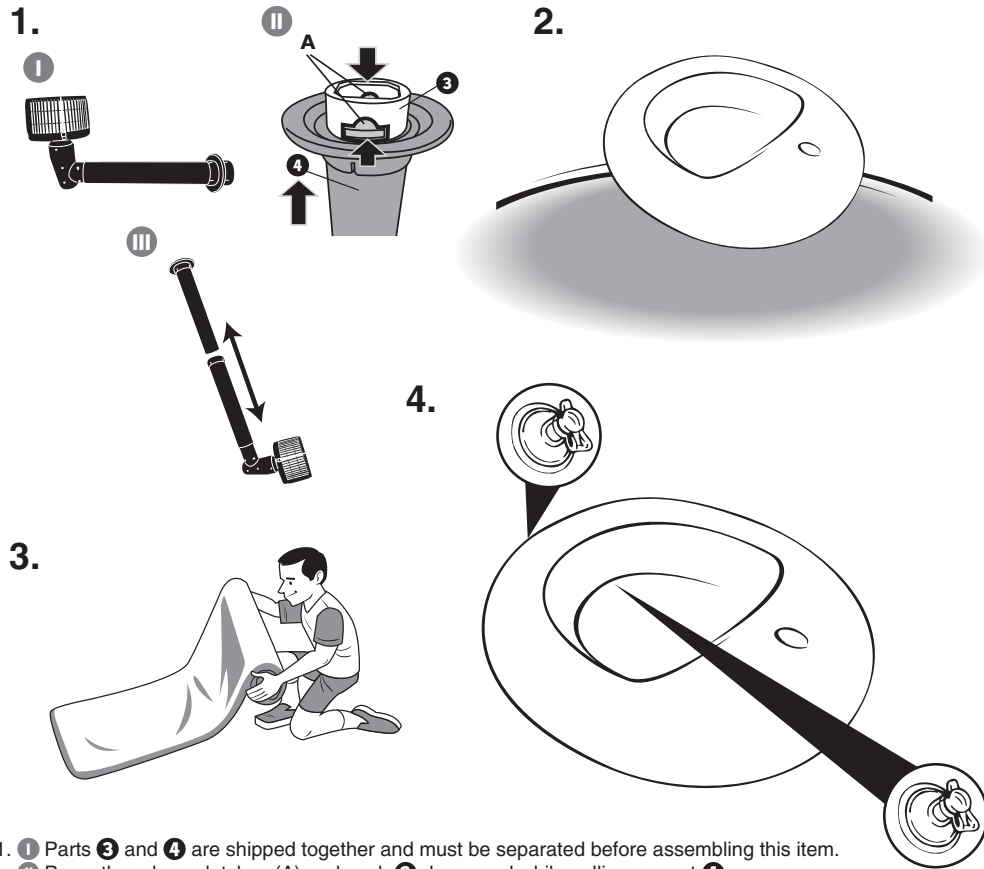


### (Batteries not included)

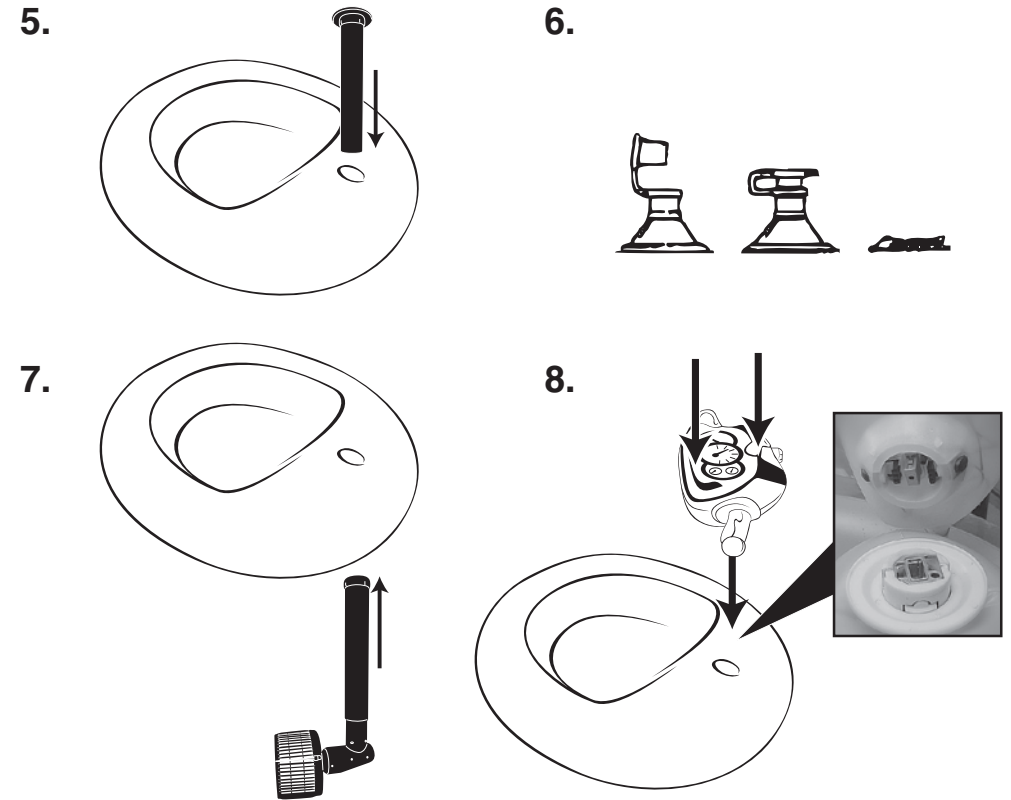
1. Unscrew the top cover on the controller unit with a screwdriver as shown.
2. Take out the battery box.
3. Install 8 x 1.5V "D" (LR20) size batteries accordingly.
4. Place the battery box back inside the controller unit and screw on the top cover with a screwdriver.
5. To replace batteries, make sure to remove the Motorized Bumper Boat™ from the swimming pool, unlock the controller unit from the Motorized Bumper Boat™ and repeat procedures 1 to 4.

**NOTE:** Never install or replace the batteries while the toy is still wet or in the pool.

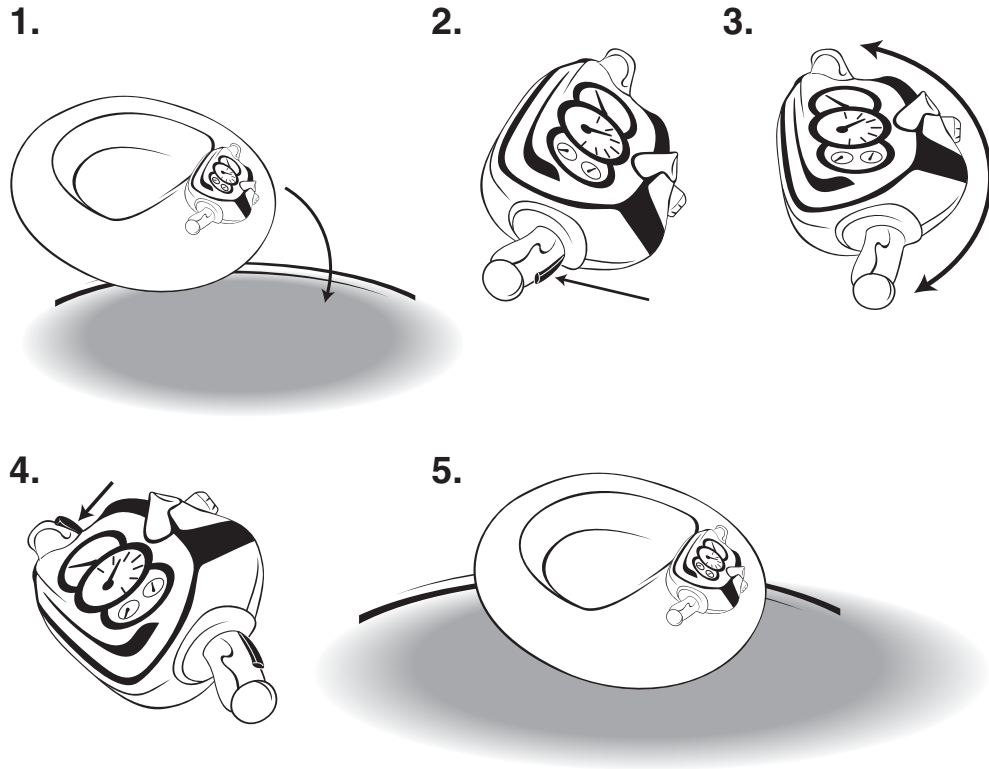
## Setup Instructions



## Setup Instructions



## Use Instructions



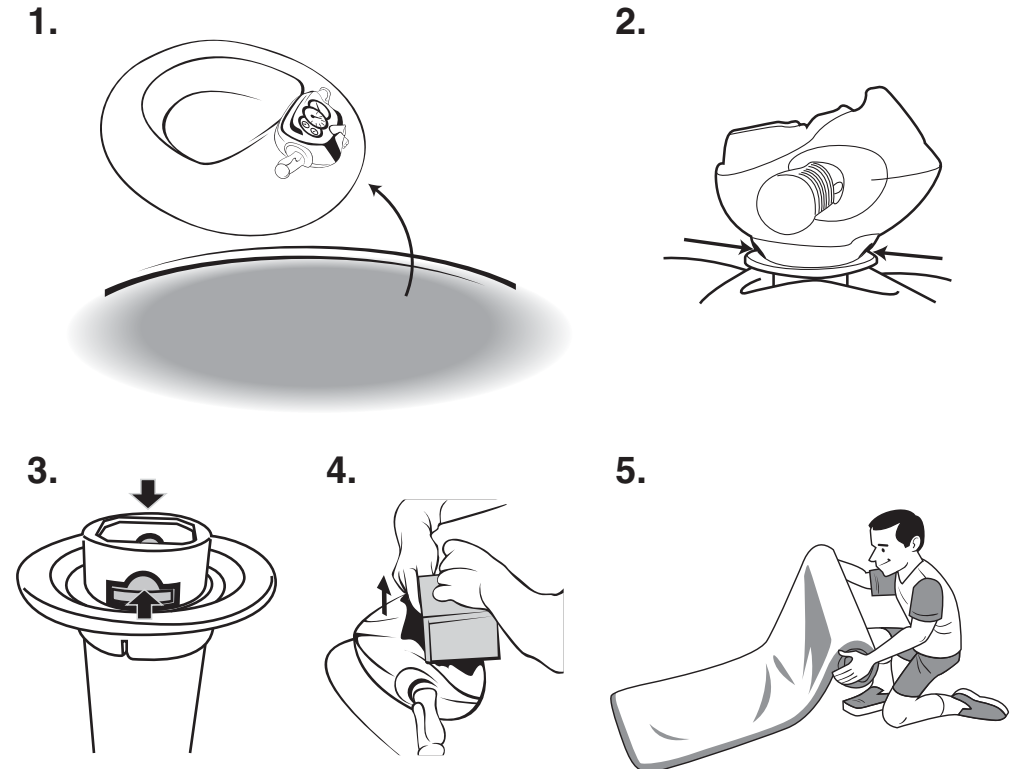
### How to play

1. Place the assembled Motorized Bumper Boat™ into the swimming pool.
2. Press and hold the right handle's trigger to start the propeller; release it to stop.
3. Turn the controller unit for steering control.
4. To shoot the water blaster, hold down the trigger on the left handle.
5. **IMPORTANT:** To prevent overheating, the Motorized Bumper Boat™ may automatically shut down for cooling after long continuous play. The cooling process may take up to 1.5 hours.

### WARNING!

1. This is a toy and not a life saving flotation device. It should not be used as such.
2. Attention! Motorized Bumper Boat™ should be used in water level no higher than the neck of a standing child and under adult supervision.
3. There should be a minimum of 6 ft (183 cm) between the product and the swimming pool wall to prevent the possibility of the child falling off and hitting his head on the edge of the pool's wall.

## After Use & Storage



1. Remove the Motorized Bumper Boat™ from the pool.
  2. The controller unit by pressing the release button at the bottom.
  3. Unlock the latches at the pipe cover and remove the propeller unit. Deflate the Motorized Bumper Boat™ and let it dry thoroughly.
  4. Remove all the batteries and drain away all the water in the propeller unit before storage.
- NOTE:** Always store the Motorized Bumper Boat™ in a dry place. Never leave in the pool or outside when not in use.
5. When the Motorized Bumper Boat™ is completely dry, carefully fold it up and store in a secure location away from children. Do not store indoors or in a closed container until it is completely dry.

**NOTE:** Store the Motorized Bumper Boat™ in a secure place, away from children, to prevent suffocation.