

KT TAPE®

KT PERFORMANCE+™

NEW!

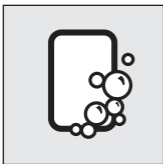
BLISTER TREATMENT PATCH



LEARN MORE & SEE INSTRUCTIONAL VIDEOS AT:
kttape.com/instructions/blisterpatch

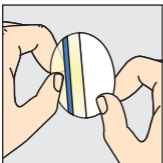
1 APPLYING PATCH

NOTE: For optimal results drain the blister before applying the Blister Treatment Patch. Consult a medical professional for direction.



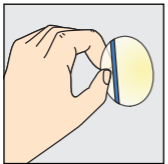
CLEAN SKIN

Clean and dry the affected area before applying patch. For best results, clean around the affected area with rubbing alcohol and let dry.



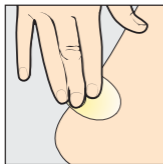
REMOVE WRAPPER & PEEL PAPER

Remove patch from sterile wrapper. Carefully remove white paper by loosening edge and gently pulling strip sideways to release seal.



DON'T TOUCH ADHESIVE!

While holding blue lined tab, place the exposed half of patch directly over blister or wound.

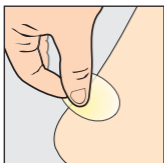


APPLY PATCH

Remove blue lined tab completely and press down to adhere. Do not re-apply used patch after removal.

2 PATCH REMOVAL

Product is designed to stay on for 4-7 days and fall off on its own. If leakage around the treatment patch should occur, apply new patches as needed.



TO REMOVE (DO NOT RIP OFF)

To remove patch, carefully loosen edge and gently pull strip sideways to release seal. Avoid pulling upwards.

WARNING: For external use only. Do not use this product if you have poor circulation, fragile skin, or are diabetic. Do not use if you are allergic to any component of this product. Do not apply to any infected areas. Product should only be used on blisters and minor wounds. If blister or wound persists, see your physician. Only use each patch one time. Discontinue use if skin becomes irritated. Sterile unless wrapper is opened or damaged. If wrappers are opened or damaged, do not use the product. This product is not made with natural rubber latex. **READ ALL WARNINGS AND INSTRUCTIONS PRIOR TO USE.** ©2017 KT Health, LLC, American Fork, UT 84003. All rights reserved.

PRODUCT CLAIM DETAILS:

*Hydrocolloid in product shown to heal blisters up to 2x faster than dry bandage.

†Moist wound environment facilitates the healing process. Eases pain by cushioning and protecting the wound from friction and rubbing.

NOTE: Store away from sunlight in a dry, cool environment between 20°C to 25°C (68°F to 77°F).

Questions? Email us at

support@kttape.com

LEARN ABOUT OUR PRODUCTS AT www.kttape.com

ORIGINAL

Cotton Tape - Lasts 1-3 Days



PRO™

Synthetic Tape - Lasts 4-7 Days



PRO EXTREME™

Extra Strength Adhesive - Lasts 4-7 Days



GENTLE TAPE

Easier Removal - Lasts 1-3 Days



RECOVERY PATCH™

Swelling & Inflammation Relief



†Not clinically proven for all injuries

PRO X™ PATCHES

Targeted Pain Relief



KT FLEX™

Extra Support For Knee¹



†Not clinically verified

KT RECOVERY+™

ICE/HEAT Wrap System

