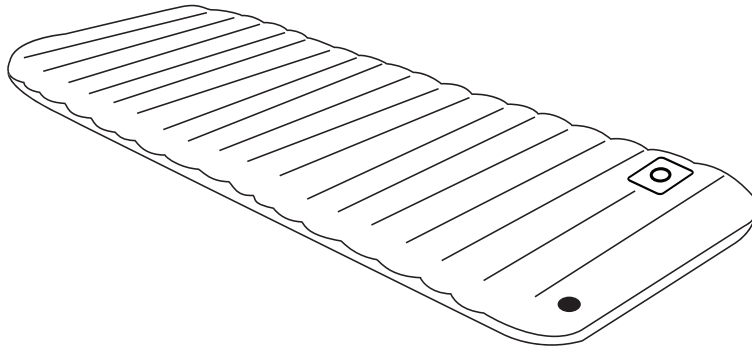


INFLATABLE SLEEPING PAD

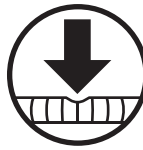
INSTRUCTION MANUAL - MODEL# 6101SPB, 6102SPG, 6103SPL

AirComfort™



Roll & Go

Roll & Go attached carrying bag and fastener system that reduces bed size quickly.



Puncture Resistant

High quality fibers are sturdy and puncture resistant.



Breathable Fabric

Breathable fibers easily adjust to your body's ever-changing temperature.



Superior Comfort

23 channel L-Beam construction and horizontal baffles allows for even air flow and flat sleeping surface.



Integrated foot pump

Lets your foot do all the work inflating, saving your lungs for hiking!

DISCLAIMER:

GREAT CARE AND ATTENTION HAS BEEN TAKEN TO ENSURE THE QUALITY OF THIS PRODUCT. IT COMES WITH AN INSTRUCTION MANUAL FOR USE AS A MATTRESS. WE ARE NOT LIABLE FOR ANY ACTIONS THAT MAY RESULT IN INJURY, DEATH, DAMAGE TO PROPERTY OR LOSS OF INCOME.

LIMITED WARRANTY:

THIS AIR BED IS GUARANTEED TO BE FREE FROM DEFECTS IN MATERIALS AND WORKMANSHIP AT THE TIME OF PURCHASE. ANY DAMAGE THAT OCCURS AFTER PURCHASE AS A RESULT OF NORMAL USE (SCUFFS OR PUNCTURES) IS NOT COVERED BY THIS WARRANTY AND IS THE SOLE RESPONSIBILITY OF THE CUSTOMER.

◆ General Care and Maintenance Instructions



Do not let product come in contact with tools, pets, or sharp objects that may puncture material.



Do not smoke while using. Keep away from open fires.



Clean product with mild soap and water only.



Never unfold or inflate the product in cold temperatures.

◆ Important Safety Information and Warnings Bed/Pump Warnings:

Adult supervision required for inflation, deflation, and maintenance. This is not a lifesaving device.

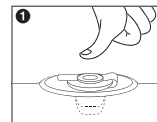
WARNING: This bed is not designed for use by children under 3 years of age. Children under the age of 3 may suffer serious or fatal injury through suffocation, falling from the bed or becoming trapped between the bed and a wall or other objects.

WARNING: This furnishing has not been evaluated for flammability or cigarette ignition resistance. - This is not a water toy. Use as a bed only. This bed is not intended for infants or persons with limited mobility. - Do not use this bed on abrasive surfaces or near pointed/sharp items or surfaces. Protruding objects may puncture bed. Do not step or jump on bed or use as a trampoline. Bed may puncture.

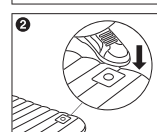
Use on flat surfaces only. Standing, jumping, or walking on the bed may result in injury and/or damage the bed. Do not jump, stand, or walk on this bed. You can hurt yourself or damage the bed if you do. This bed is made of laminated PVC and therefore may melt or burn if it comes in contact with any flame or heat source. Do not place it near or against heaters, open flame, or other hot objects.

◆ Setting Up / Storing Away

Inflating:



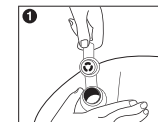
1 Open the cap of the foot pump, take out the rubber stopper, step and release the foot pump repeatedly until desired firmness



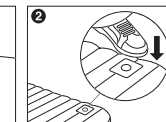
2 Unfold the mattress and ensure the air release valve is securely closed before inflation

3 Insert the rubber stopper back to avoid air leakage and close the cap securely upon completion

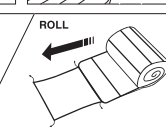
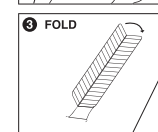
Deflating:



1 Pull the air release valve open and let the air out.



2 Press the foot pump all the way to the bottom without opening the valve and push the air into the mattress.



3 Fold the mat in the middle and roll it until you meet the end of the sewn in wrap bag, velcro tight, and tighten with cinch strings