

READ ALL INSTRUCTIONS BEFORE ASSEMBLING THIS INFLATABLE DEVICE AND  
KEEP INSTRUCTIONS FOR FUTURE USE.

FAILURE TO FOLLOW THESE WARNINGS AND INSTRUCTIONS CAN RESULT IN  
SERIOUS INJURY OR DEATH TO USERS, ESPECIALLY CHILDREN.

## **WARNING**

Closely watch children who are in or near this constant air inflatable. Assign an adult to supervise the constant air inflatable.

Empty constant air inflatable or prevent access when not in use. Store the empty constant air inflatable in such a way that it does not collect water from rain or any other source.

### **Safety Section**

Keep children in your direct sight, stay close, and actively supervise them when they are in or near this constant air inflatable.

When searching for a missing child, check the constant air inflatable first, even if child is thought to be in the house.

#### *Electrocution Risk:*

Keep all electrical lines, radios, speakers and other electrical appliances away from the constant air inflatable.

Do not place constant air inflatable near or under overhead electrical lines.

CAI



The product should be periodically examined for conditions that may result in the risk of fire, electric shock, or injury to persons and that, in an event such conditions, the product should not be used until properly repaired.

## **IMPORTANT SAFETY INSTRUCTIONS. PLEASE READ AND SAVE THESE INSTRUCTIONS CAREFULLY BEFORE USING THIS PRODUCT.**

### **WARNING!**

To Reduce the Risk of Fire or Electric Shock. Do Not Use This Blower with Any Solid-State Speed Control Device. Warn the user to unplug or disconnect the appliance from the power supply before servicing.

### **DANGER**

To prevent electric shock, do not immerse the blower in water, wipe clean with damp cloth.

Do not operate any fan with a damaged cord or plug. Discard fan or return to an authorized service facility for examination and/or repair.

Do not run cord under carpeting. Do not cover cord with throw rugs, runners, or similar coverings. Do not route cord under furniture or appliances. Arrange cord away from traffic area and where it will not be tripped over.

## **CAUTION - ELECTRICALLY OPERATED PRODUCT**

Operation of Blower Fan Unit not recommended for children under 14 years of age. As with all electric products, precautions should be observed during handling and use to prevent electric shock.

**AGES 3-12**

 **WARNING:**  
CHOKING HAZARD - Small parts.  
Not for children under 3 yrs.

## SAFETY PRECAUTIONS

**WARNING!** Failure to follow these instructions could result IN SERIOUS INJURY OR DEATH.

**CHILDREN MUST HAVE ADULT SUPERVISION WHEN PLAYING WITH THIS PRODUCT. NEVER LEAVE CHILDREN UNATTENDED.**

- NOT FOR ADULT USE. NOT FOR CHILDREN OVER 12 OR UNDER 3 YEARS OF AGE.
- Total no. of users: 2
- For outdoor use.
- Keep away from fire.
- To prevent electrical shock or damage to blower, do not pour water on it and never leave outdoors overnight. Keep the blower away from water.
- Keep children away from blower.
- Remove eyeglasses, and sharp objects before playing with product.
- No flipping, piling, pushing or wrestling when playing with the product.
- Always dry the product thoroughly before storing. Can cause mildew if stored damp.

### SET UP:

- Adult assembly required.
- NOT FOR COMMERCIAL USE. This product is intended for family domestic use only.
- Place and use on level ground.
- Do not set up or use in windy, snowy or rainy weather.
- Do not set up or use on concrete, asphalt or any other hard surfaces.
- Use on flat lawn only, not pavement or other hard surfaces. Lawn should be free of rocks, bumps, depressions, sticks, etc.
- Set up a safe distance from fences, garages, houses, walls, water, overhanging branches, laundry lines, overhanging electrical wires and other obstructions.
- To prevent product from becoming unstable and the possibility of serious injury or death, do not play on the product until it is completely filled with air and anchored properly.
- The design of the constant air inflatable requires a fair amount of air to emit from its porous fabric material. This ensures that the product remain inflated while allowing it to resist small tears and punctures.
- To anchor the product properly, ALWAYS anchor the product and blower with corresponding ground stakes before use and make sure the water weight bags have been filled with water and attached to the inflatable using the plastic connectors.
- Keep the blower and power cord away from water.
- To extend the life of the product, do not leave the product in the sun when not in use.

## REPAIR PATCH INSTRUCTIONS

For your convenience, a repair patch has been included to repair holes in the inflatable section. In the event of an accidental puncture, cut out a suitably sized patch. Make sure you round the corners of your repair patch to avoid peeling. Make sure area to be patched is clean. Press patch firmly over the puncture. Do not inflate for 30 minutes.

## WARNING

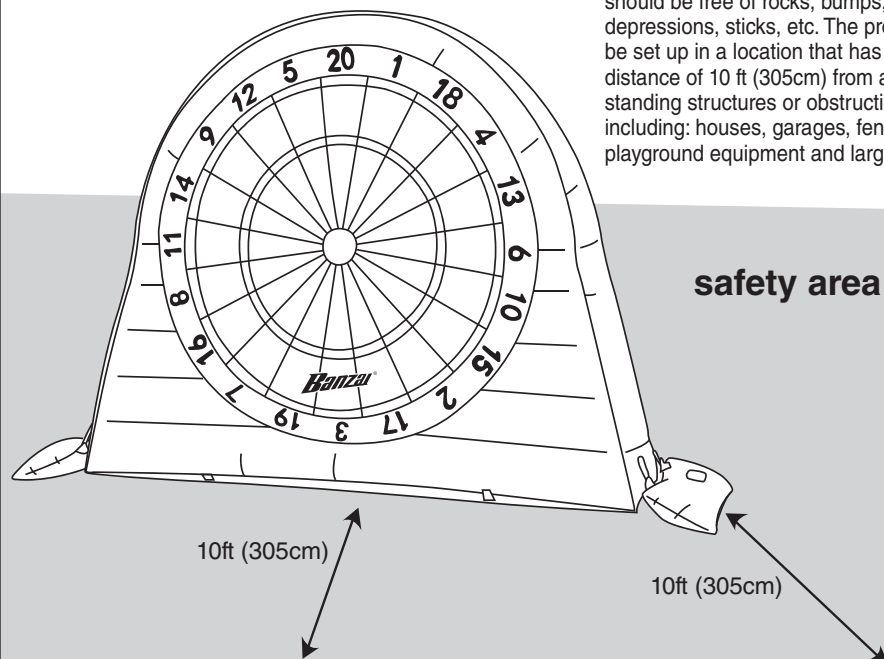
While every attempt is made to embody the highest degree of protection in all equipment, we cannot guarantee freedom from injury. The user assumes all risk of injury due to use. All merchandise is sold on this condition, which no representative of the company can waive or change.

## INTRODUCTION

Kick start your summer with the Kick 'N Stick Foot Darts™! This towering freestanding dartboard inflates in under a minute with the included blower motor, while water-weighted anchor bags keep it firmly in place. The dartboard and kickballs are covered in a self-sticking surface so your kicks stay put wherever they land. Go ahead, give it a kick. At over 7-feet-tall, Kick 'N Stick Foot Darts™ is a sure shot for backyard summer fun!

## SETUP INSTRUCTIONS

**PLACEMENTS:** Use on flat lawn only, not pavement or other hard surfaces. Lawn should be free of rocks, bumps, depressions, sticks, etc. The product should be set up in a location that has a minimum distance of 10 ft (305cm) from any free standing structures or obstructions, including: houses, garages, fences, trees, playground equipment and large rocks.



## WARNING:

Overfilling will cause damage to your ball.

This product is intended to be used as a toy and not as a personal flotation device.



## HOW TO USE

1. Follow all setup instructions to ensure the product has been set up properly.
2. Remove eyeglasses, and sharp objects before playing with inflatable.
3. No flipping, piling, pushing or wrestling when playing with the inflatable.
4. Adult supervision is required to ensure observation of all parts of the play area, all activity on the inflatable device.

## SETUP

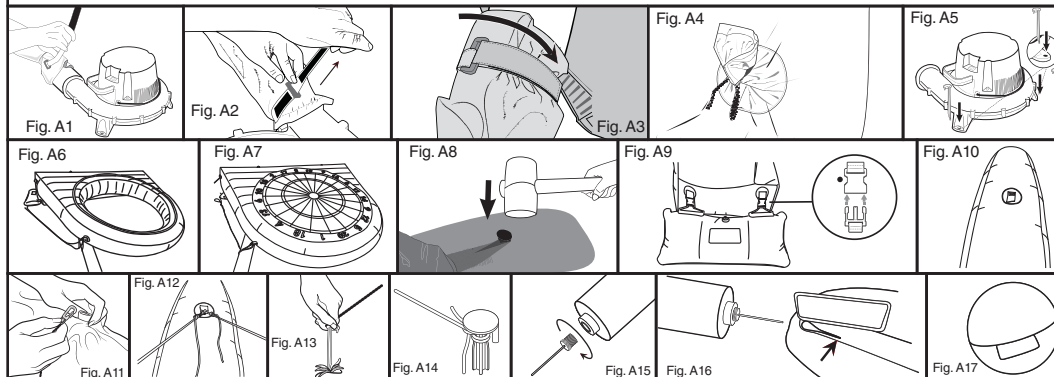
1. Unfold the constant air inflatable in a desired position on a smooth and level surface.
2. Attach the long intake tube at the back of the inflatable to the mouth of the blower motor using the attached fastener strap. To ensure a secure fit, wrap the strap around the mouth of the blower and tightly attach the self-sticking strap. (Fig A1-A3)
3. Tie the short air release tube closed with the drawstring provided. (Fig A4)
4. Position the blower in a straight line perpendicular and level to the back of the inflatable. The blower should be placed on a stable surface and remain upright after the inflatable is inflated. The blower is a high-volume fan capable of moving a lot of air very quickly. Place the blower in an area where it will not suck in dirt or leaves. Keep blower away from children, water and moving vehicles. Set up inflatable far away from any structures or obstructions. Once positioned, secure the blower with the blower ground stakes provided. (Fig A5)
5. Do not set up over concrete, asphalt, packed earth, or any other hard surfaces. A fall onto a hard surface can result in serious injury.
6. Plug the blower into a properly grounded outlet and turn it on. The inflatable should inflate in under a minute. Do not allow children to use the inflatable until it is fully inflated.
7. After inflation, the blower should run continuously while children are playing.

### SELF-STICKING DARTBOARD:

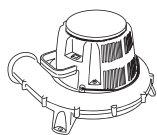
8. Your constant air inflatable should be fully inflated and lying face-up. (Fig A6)
9. Unfold the dartboard and position it over the center opening of the constant air inflatable. With the "20" positioned at the very top, attach the dartboard along the hook-and-loop fasteners, as shown (Fig A7) and then lift up the inflatable.
10. Locate the loops around the bottom of the inflatable and anchor them to the lawn with the ground stakes provided. (Fig A8)
11. Ground stakes must be completely inserted into the ground so that no part of the stake is protruding above the ground surface. This will help prevent tripping or injuries resulting from a fall.
12. Connect the water bags to the side of the inflatable, then fill bags with water until full and close the caps. **NOTE:** Each water bag should be filled with 40lbs (18kg) of water. Each water bag must be attached while using the inflatable. (Fig A9)
13. Clip the loops on the side of inflatable (Fig A10-A12), attach tether ropes to the constant air inflatable ground stakes (Fig A10), then insert the ground stakes to the ground (Fig A13), making sure tethers are taut. (Fig A14)

### FABRIC-COVERED KICKBALLS: (Adult assembly only)

14. Use the provided hand air pump and needle provided to inflate the kickballs. Screw the needle onto the air pump. (Fig A15)
15. Open the self-sticking opening of the fabric covered ball and locate the rubberized air valve. Insert the needle into the air valve. (Fig A16)
16. Rest the ball onto a flat surface and grip the handle of the air pump. Quickly push and pull the handle to pump air into the ball. Do not over-inflate the ball.
17. Once the ball is completely inflated, stop pumping and pull out the needle.
18. Close the self-sticking closure of the fabric covering (Fig A17). Unscrew the needle and put back in the hand bump.



## KICK 'N STICK FOOT DARTS™ SETUP DIAGRAM



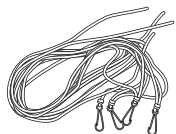
**Blower Motor**



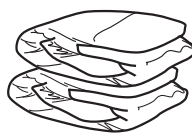
**Constant Air Inflatable Stakes**



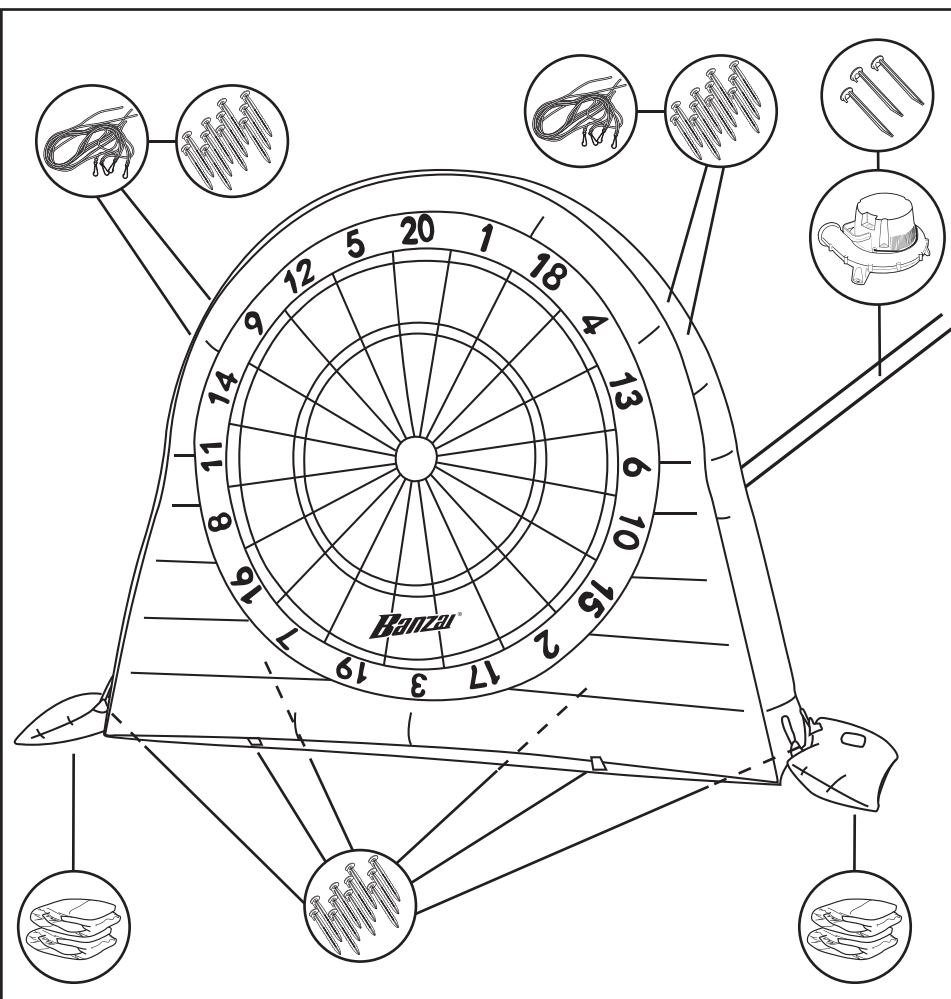
**Blower Ground Stakes**



**Tether Ropes**



**Water Bags**



## HOW TO PLAY

There are several different traditional dart board games you can modify to play with your Kick 'N Stick Darts set. Here are a few games to get you kicking!

### BEFORE YOU BEGIN:

#### Oche:

After setting up Kick 'N Stick Darts, you'll need to create a kick line, also known as the oche. This is the line each player stands behind before kicking the kickball.

#### Scoring:

There's math involved! The board is divided into many ways to give each section different point values.

The board is divided into 20 pie-shaped wedges. Each wedge has a number value. Any time your ball lands on any black or white section, you get that number of points. If you land on the outer red or green areas, you double the points. If you land on the inner red or green areas, you triple the points. But, if you land on the bullseye in the center of the board, you instantly get 50 points.

### Let's Play!

#### UP TO FIVE

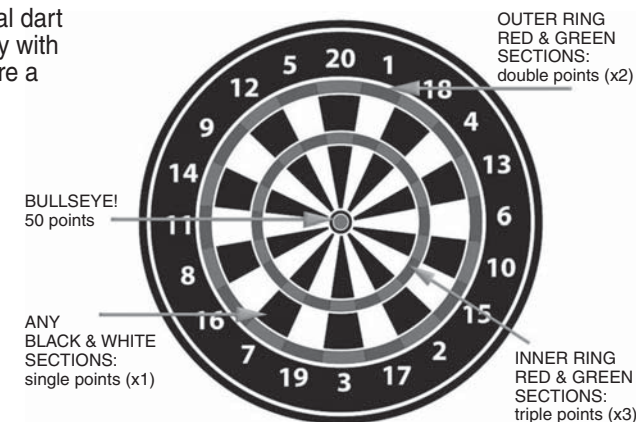
Objective: Kick the ball into the 1, 2, 3, 4 and 5 wedges in sequential order. The person with the highest score wins.

Each player takes turns aiming for the 1 wedge. Once you make it, calculate your points based on where the ball lands. You cannot move on to the 2 wedge until you landed the ball in the 1 wedge. Continue taking turns until all players successfully landed their kicks in all 5 wedges. Remember, a bullseye is worth 50 points! Tally up your scores and the person with the highest point wins.

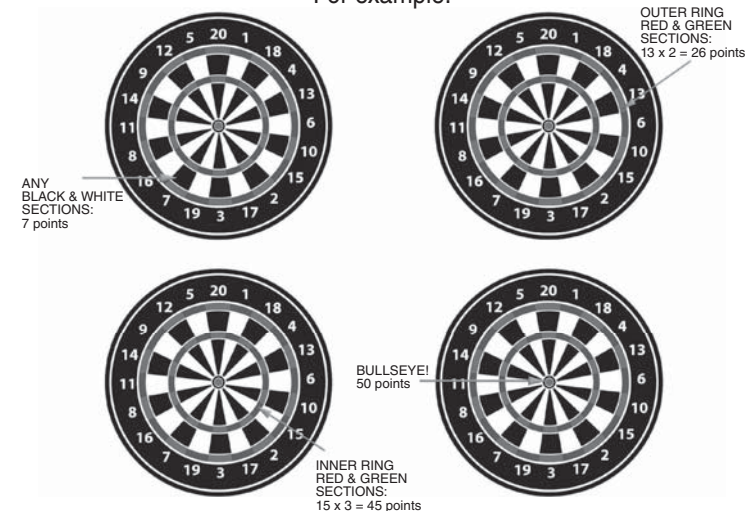
#### BEST OF THREE

Objective: Person with the highest score after 3 kicks wins.

Each player takes turns kicking the ball anywhere on the board. Each player only gets one kick per turn. Once everyone has successfully lands 3 kicks, tally up the scores and the person with the highest points wins. If someone lands a bullseye, that person automatically wins the game!



For example:





## GROUNDING INSTRUCTIONS

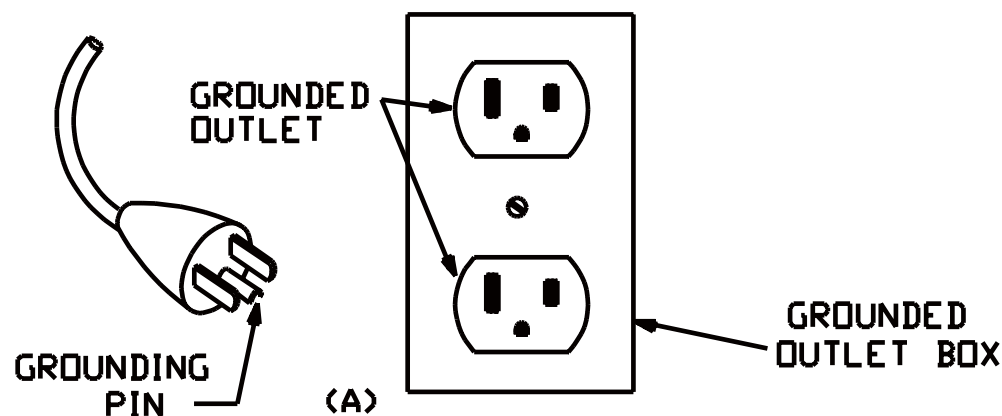
This product should be grounded. In the event of an electrical short circuit, grounding reduces the risk of electric shock by providing an escape wire for the electric current. This product is equipped with a cord containing a grounding wire with an appropriate grounding plug. The plug must be plugged into an outlet that is properly installed and grounded in accordance with all local codes and ordinances.

**DANGER** – Improper installation of the grounding plug can result in a risk of electric shock. If repair or replacement of the cord or plug is necessary, do not connect the grounding wire to either flat blade terminal. The wire with insulation having a green outer surface with or without yellow stripes is the grounding wire.

Check with a qualified electrician or technician if the grounding instructions are not completely understood or if in doubt as to whether the product is properly grounded. Do not modify the plug provided; if it will not fit the outlet, have the proper outlet installed by a qualified electrician.

This product is for use on a nominal 120-V circuit and has a grounding plug similar to the plug illustrated in Figure A. Only connect the product to an outlet having the same configuration as the plug. Do not use an adapter with this product.

### Grounding methods



## SAFETY CHECKLIST: READ BEFORE USING

### SET UP:

1. Before setup: Check under and around the inflatable for sharp objects, rocks, sticks, lawn sprinklers or any other object that can cause injury or damage the inflatable. Setup on a flat lawn surface, free of depressions or high spots.
2. Use with manufacturer-supplied stakes **ONLY**.
3. Areas immediately adjacent to all areas of access egress of the inflatable device 8ft 8in L x 2ft W x 7ft H (264cm L x 61cm W x 213cm H) shall have use zones, which are free of obstacles and covered with impact attenuating surfacing for a minimum distance of at least 10ft (305cm).
4. Do not use a damaged inflatable.
5. Blower and electrical cords should not pass under the inflatable and interfere with its operations.
6. Blowers and electrical cords shall be positioned at least 4.3ft (1.3m) from a walled side of the inflatable device and 8.2ft (2.5m) from an open side.
7. The inflatable shall be inflated with blower provided or with other manufacturer specified replacement blower.

### USE :

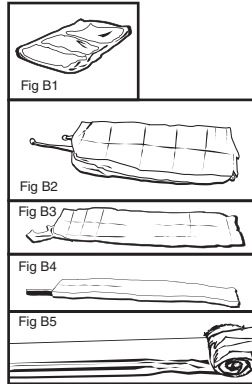
1. Adult setup and supervision is required at all times. Adults should read instruction manual entirely and instruct children on proper use of this inflatable.
2. Remove all hard or sharp objects from person and pockets, such as toys, buckles, keys, jewelry, watches, etc.
3. For long periods of play, move inflatable occasionally to prevent depressions in ground underneath.
4. Check all ground stakes occasionally to make sure they stay secure and flat in the ground.
5. Water bags must be attached while playing.

### Proper Use of Product:

1. Prevention of inappropriate activities (for example, somersaults and rough play).
2. Correct set up and positioning of the constant air inflatable.
3. Keep pets off the constant air inflatable.
4. Do not attach items to the inflatable device that are not specifically designed for use with the inflatable device, such as, but not limited to, jump ropes, clothesline, pet leashes, cables and chain as they have the potential to cause a strangulation hazard.

### TO DEFLATE:

1. Make sure all users move away from the inflatable.
2. Before deflating, disconnect the water bags from the side of the inflatable, drain the water from the bags, allow to dry and properly store.
3. Unplug the blower.
4. Disconnect the long intake tube from the blower and place the blower in a safe place.
5. Open the air release tube and allow the inflatable to deflate completely. It should deflate on its own within 5 minutes. (Fig B1)
6. Remove the ground stakes of the inflatable by pulling on the head of the stake. DO NOT pull on the inflatable corners!
7. Be sure the inflatable is free of dirt, leaves, sand, etc. This will lengthen the life of your inflatable.
8. Fold the inflatable in half, making sure that the release tube is parallel to the fold. Fold it in half 2 more times, parallel to the first fold. (Fig B2-B3)
9. Roll the inflatable tightly starting from the end opposite the intake and release tubes. (Fig B4-B5)
10. Roll the inflatable tightly from one end to the other and avoid any creasing.



### IMPORTANT:

Never store the product when wet. Allow drying before rolling up.  
Move the product every day to prevent browning or damage to the lawn.  
Follow all previous instructions each time you set up the product.  
Store product in a secure place, away from children, to prevent suffocation.

### STORAGE:

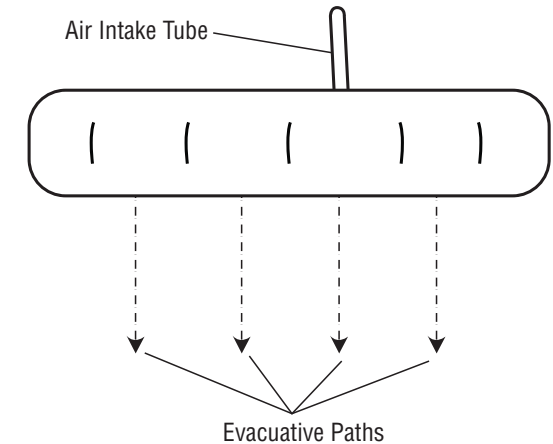
Slip the carrying bag over the rolled-up inflatable. Flip the bag and the inflatable over, close the bag, and store the inflatable and the blower in a dry place. Store the inflatable in a secure place away from children to prevent suffocation. Never leave either the product or the blower outside when not in use. (Fig B6-B8)

To prevent mold and other damage to the inflatable, it is strongly advised to air dry the inflatable with the blower motor to ensure it is completely dry before folding up for storage.



## EMERGENCY EVACUATION

For emergency evacuation, users should walk to a safe location as shown with the dotted lines in the diagram below. To avoid danger of tripping over the air intake tube and causing potential injury, do not walk on the side of the product that has blower motor attached.



## MAINTENANCE OF KICK 'N STICK FOOT DARTS™

1. Check the inflatable at regular intervals for holes, tears or other damage. DO NOT use a damaged inflatable. Use of a damaged inflatable could result in serious injury or death.
2. Check the water filled water bags at regular intervals for any signs of damage or deterioration. A damaged or deteriorated water filled water bags could cause the inflatable to become unstable which would be a significant safety hazard.
3. In addition to checking the product at a regular intervals, be sure to complete a thorough check of the entire product at the beginning of each season or series of use.
4. If any component of the product is damaged or deteriorated, discontinue use and contact the manufacturer.
5. Regularly check the condition of the ground stakes that hold the inflatable in place. Damage to or deterioration of the stakes could result in the inflatable becoming unstable which could result in serious injury.
6. To keep the product clean, you can use a dry cloth or a cloth dampened with a neutral, non-flammable, nontoxic cleaning and sanitizing solution or pure water to wipe the surface of the inflatable or blower.

## BLOWER OPERATING INSTRUCTIONS

### INTENDED USE:

This product is only to be used for inflating the Kick 'N Stick Foot Darts™. Household Use only.

### WARNING:

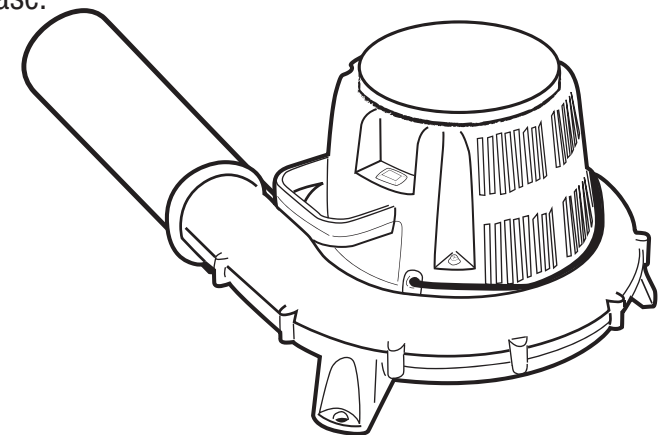
1. Electrical current requirements: 110-120VAC/60Hz
2. The power supply to the blower should include a reliable earth terminal and current leakage protection device.
3. The power cord to the appliance should be clearly marked, so that persons using lawn mowers or other types of equipment are aware that there is a cord on the ground.
4. The blower should never be left unattended when in use. The appliance is not to be used by children.
5. No objects should cover the air intake when the blower is in use. Sand, small stones or other objects should not be allowed to be sucked into the blower.
6. Under no circumstances should a finger or any sharp object be inserted into the air intake.
7. The power supply to the blower should not be exchanged for any other type of supply. If the power supply is damaged, it should be repaired by a technician.
8. To avoid the danger of electrical shock, do not use the blower in the rain.
9. Do not use extension cords as this would present an electrocution hazard.
10. Do not leave the blower exposed to strong sunlight.
11. Children should not touch the blower. Children must not play on the product until the blower is properly installed.
12. Children should not attach foreign objects to the blower that are not specifically designed for use with the blower, such as, but not limited to jump ropes, clothesline, pet leashes, cables and chain as they may cause a strangulation hazard.
13. Sudden gusts of wind may lift the product off of the ground.
14. Blowers and electrical cords should be kept out of reach.
15. The product shall be inflated with blower provided or with other manufacturer specified replacement blower.

### INSTALLATION:

1. Place the blower on the ground and then secure it by inserting the ground stakes into the holes in the base.
2. The blower should be installed in a well-ventilated location and on a level surface.
3. The air input of the product (the long intake tube) is to be attached to the air output of the blower and secured in place with a cord.

### USING THE BLOWER:

1. Plug the blower into a power supply.
2. To avoid electrical shock, never plug in or unplug the appliance with wet hands.
3. The power supply should be disconnected if the blower or the product needs to be transported or moved.
4. There is an ON/OFF switch on the blower body. Press “I” to switch on the blower, and press “O” to switch off the blower.



# Attn: Each time the blower is used, a simple test with the Ground Fault Circuit Interrupter (GFCI) must be conducted.

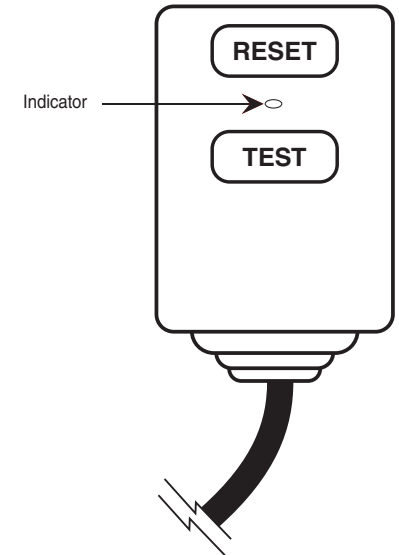
1. Push the “Reset” button located on the GFCI receptacle, first to assure normal blower and GFCI operation.
2. Press “I ” to switch on the blower.
3. Push the “Test” button located on the GFCI receptacle. The blower should go “OFF”.
4. Push the “Reset” button again. The blower should go “ON” again.

The indicator on the GFCI receptacle will be red whenever the “Reset” button is pressed.

If the blower remains “ON” when the “Test” button is pushed, the blower or GFCI is not working properly. If blower or GFCI is not working properly, please call a qualified, certified electrician who can assess the situation.

## Maintenance and Storage:

1. To keep the product clean you can use a dry cloth or a cloth dampened with a neutral, non-inflammable, nontoxic cleaning and sanitizing solution or pure water to wipe the surface of the inflatable or blower.
2. You should not clean the blower with a chemical solution as this may damage the coating and plastic parts.
3. Never clean the blower in water.
4. Never store the blower outside. Keep it in a dry indoor place unreachable by children.
5. Regularly check the condition of the blower stakes. Damage to or deterioration of the stakes could result in the blower becoming unstable which could result in serious injury.
6. Regularly check the condition of the power cord and GFCI. Damage to or deterioration of the cord or GFCI could cause a serious electrocution hazard. If the cord or GFCI is damaged or deteriorated, immediately discontinue use of the blower and contact the manufacturer.
7. This blower with Auto-Reset Protector, if the motor over heated, the protector will trip to protect your safety. Turn off the blower and let it cool down. Then, you can use it again. Please follow the instruction carefully to avoid any wrong operation that will cause overheating.
8. To keep the power cord in good condition, hand-supported product when carry the power cord, and do not twisting the cord, keep it dry and store it dry.



**ALL NEW MATERIAL. Surface Clean Only. Electrical ratings: 110-120VAC, 60Hz, 2.7A**



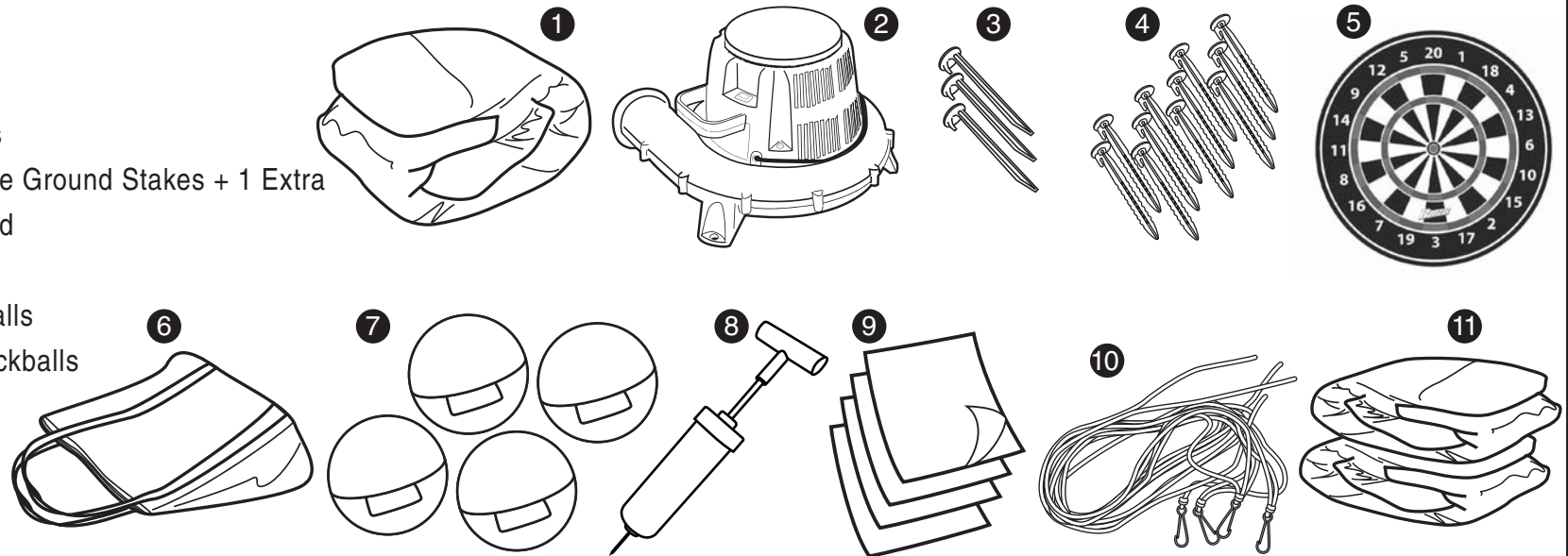
**WARNING - Electrocution Hazard**  
**DO NOT USE EXTENSION CORDS**  
**WITH THIS PRODUCT.**

**NOTE:**  
The maximum wind speed for operations of the inflatable shall be 20 mph.



## PART LIST

1. 1 x Constant Air Inflatable
2. 1 x Blower Motor
3. 3 x Blower Ground Stakes
4. 10 x Constant Air Inflatable Ground Stakes + 1 Extra
5. 1 x Self-Sticking Dartboard
6. 1 x Carrying Bag
7. 4 x Fabric-Covered Kickballs
8. 1 x Hand Air Pump For Kickballs
9. 4 x Repair Patches
10. 4 x Tether Ropes
11. 2 x Water Bags



## BEFORE RETURNING TO STORE

PLEASE VISIT  
THE CUSTOMER SERVICE WEBSITE  
BELOW FOR IMMEDIATE ASSISTANCE  
REGARDING QUESTIONS OR  
PROBLEMS WITH THIS PRODUCT.

**[www.toysinquiry.com](http://www.toysinquiry.com)**

OR

1-800-434-6178

**PANZAI**<sup>®</sup>  
82669

PLEASE RETAIN THIS INFORMATION FOR FUTURE REFERENCE.  
COLORS AND CONTENT MAY VARY.  
CHANGHUANG ROAD,  
CHANGPING, DONGGUAN,  
CHINA  
ALL RIGHTS RESERVED  
**MADE IN CHINA**  
[www.toysinquiry.com](http://www.toysinquiry.com)