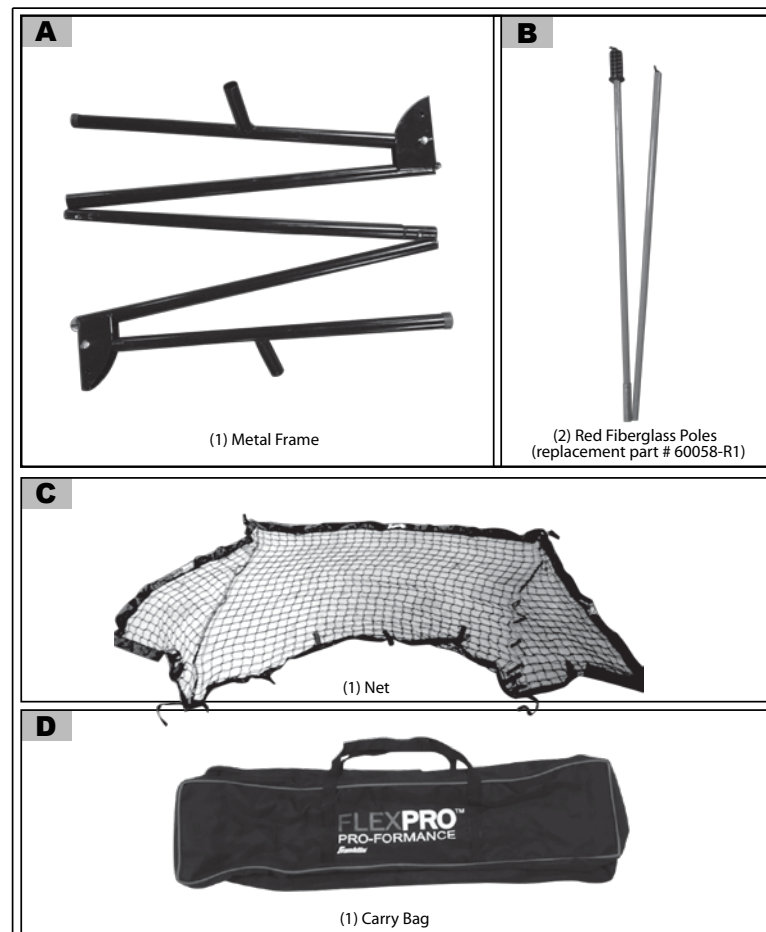


Franklin®
FLEXPRO® SOCCER GOAL
 ITEM # 60058



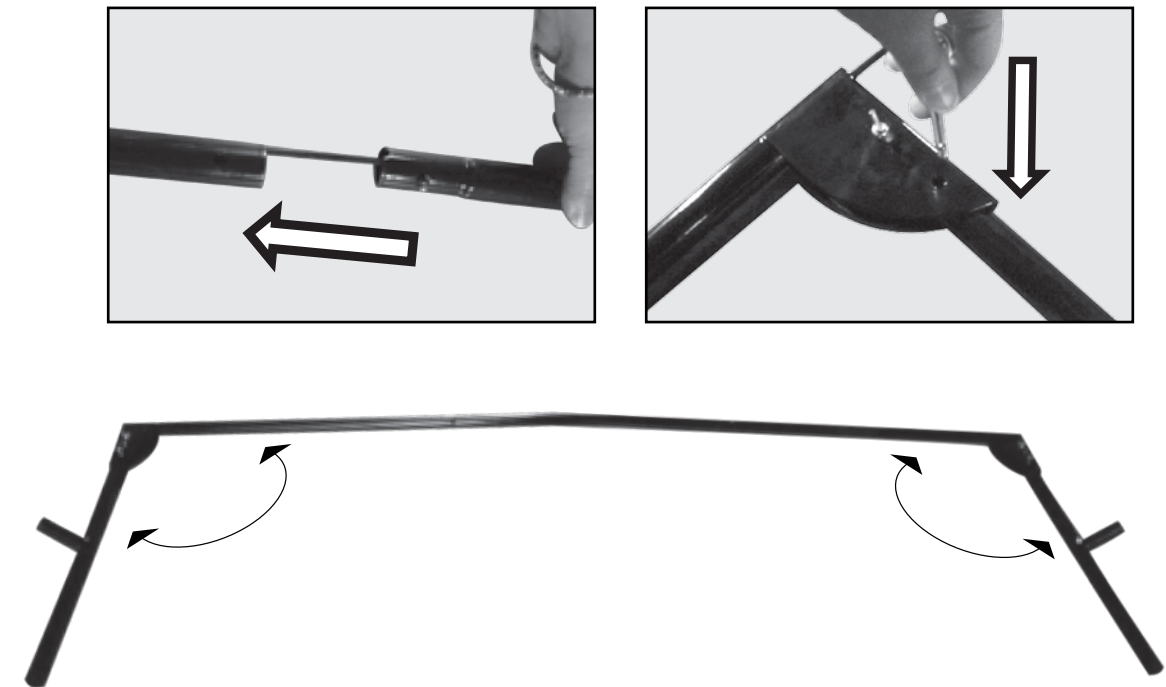
PARTS LIST:



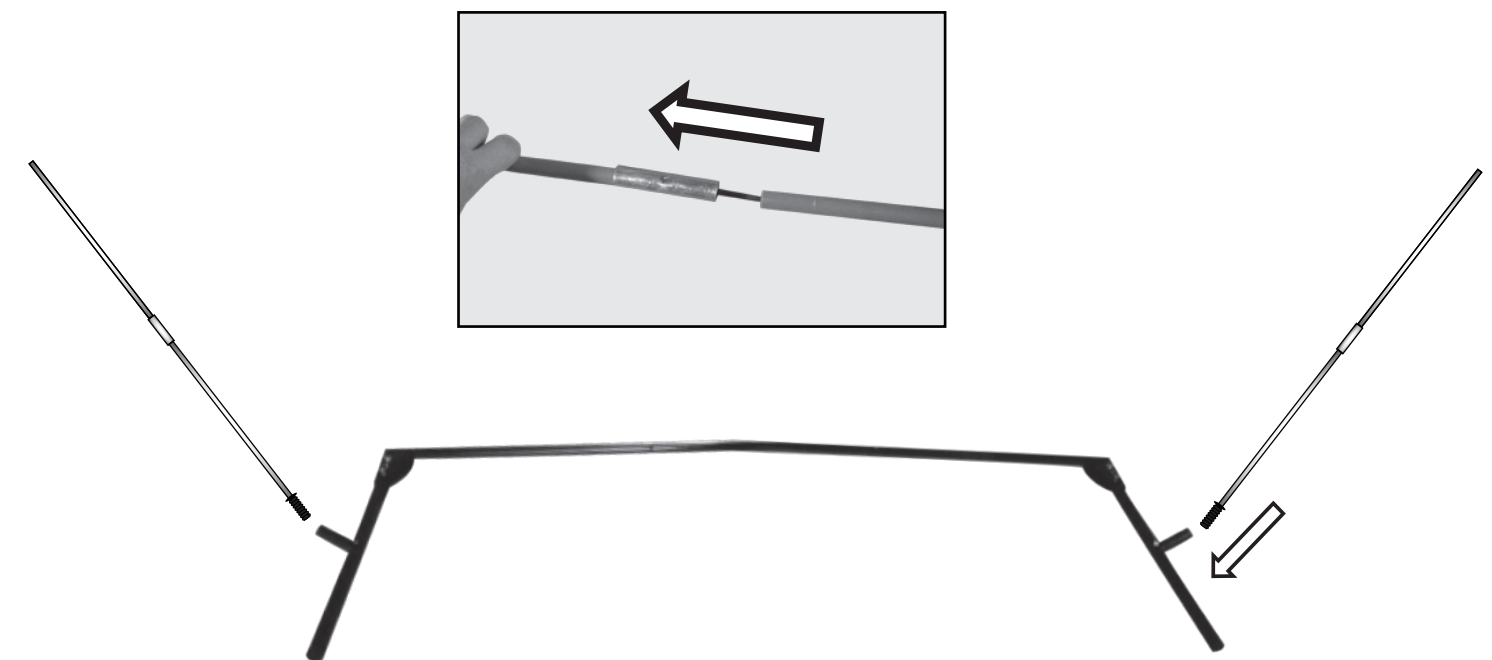
⚠ CAUTION:
 Adult assembly required.

ASSEMBLY INSTRUCTIONS:

(1) Unfold the corded metal frame. Insert poles together. Unfold corners and secure angle with metal pin on each side. (See below)

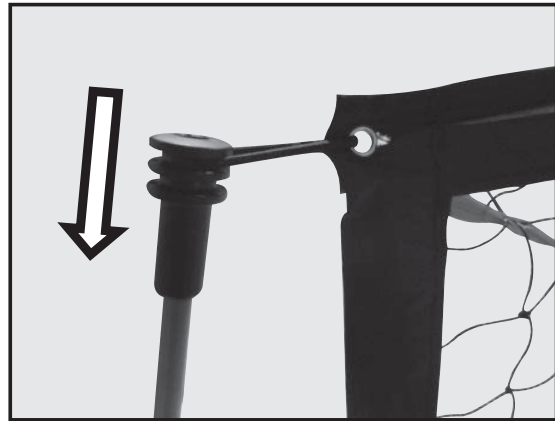


(2) Unfold and secure the red fiberglass poles together. Insert the poles into the frame where indicated below



(3) Unfold the net. Make sure the net is facing the correct direction. The logo indicates the front.

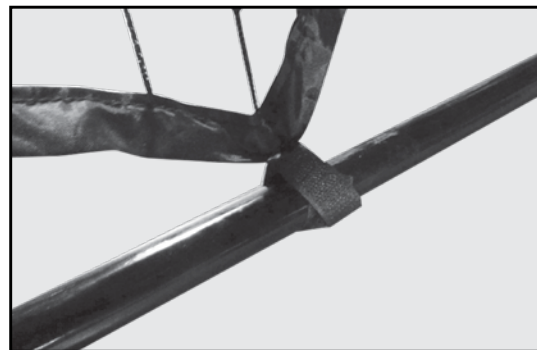
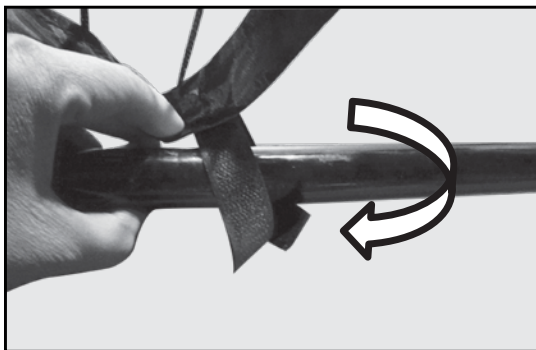
(4) Take the top right corner of the net and slide the plastic pole cap, which is attached to the net, onto the fiberglass pole. Repeat on the left. The tension poles will flex during this process. (See below)



(5) Take the sleeve net on both the right and left front bottom corners of the net and slide onto the metal frame. (See below)



(6) Attach the net by wrapping the self-stick straps around the metal frame. (See below)



Assembly is complete.

Franklin[®]

60058
Made in China
Franklin Sports Inc.
Stoughton, MA 02072
www.franklinsports.com