



TOURNAMENT LASER® CLASSIC SPEED SPOOL® SLP

TLC1SH

HS
7.5:1
HIGH SPEED

10 Bearing System



Lew's® Tournament Laser Classic reels are designed to be **SUPER LOW PROFILE**

Driven by innovation - Fueled with Passion
Feel the Difference!

Reel Specifications

Model	Weight (oz.)	Gear Ratio	Line Capacity (yd./lb.)	RPT*
TLC1SH	7.4	7.5:1	110/12	30"

*Recovery per turn.

FEATURES:

- One-piece graphite frame and sideplates
- Premium 10-bearing system with 9-stainless steel double shielded ball bearings and Zero-Reverse one-way clutch bearing
- Multi-Setting Brake (MSB) system utilizes both magnetic and centrifugal braking to reduce backlash
- Lightweight double anodized aluminum spool
- Durable Rulon drag system provides up to 15 lbs. drag power
- High strength brass drive gear • Zirconia line guide • External lube port
- Bowed 95 mm aluminum with Lew's custom SoftTouch handle knobs

ATTENTION BRAIDED LINE USERS!

If your Lew's® Baitcast reel has pre-drilled holes in the spool, you may tie your braid directly to the spool, by passing the braid thru the provided holes and tying a uni-knot.

If your Lew's® baitcast reel does not have pre-drilled holes in the spool, you will need to first tie on and spool at least 20 revolutions of monofilament line, and then tie your braided line to the monofilament line, with either a back-to-back uni-knot or an Albright knot.

Continue to spool your reel as normal, keeping strong tension on the line to ensure the line is firmly wound onto the spool to keep from "digging in" to underlying line layers when pressure is put on the line from fighting fish.

FAILURE TO PROPERLY SPOOL BRAIDED LINE ONTO YOUR REELS SPOOL WILL RESULT IN LINE SLIPPAGE, AND THE IMPRESSION YOUR DRAG IS NOT WORKING PROPERLY.

Performance – Right out of the Box!

Your Speed Spool® is designed for performance and functionality. From the way it conforms to your hand, to the way it reacts crisply and effortlessly to your command, you'll know the minute you grab onto the Speed Spool® that you've got a quality reel.

Your Speed Spool® reel exploits several new developments which will allow you to set yourself apart from the competition.

Lightweight Graphite Frame and Sideplates

Your Speed Spool® reel utilizes a one-piece, lightweight graphite frame and sideplates. Lightweight plus strong, so you'll never have to worry about frame torque or twisting.

Lightweight Double Anodized Aluminum Spool

Machined Aluminum Spool

The spool of your Speed Spool reel has been engineered to maximize casting distance. Double anodized to withstand oxidation and abrasion.

Zero-Reverse Bearing

ZERO REVERSE

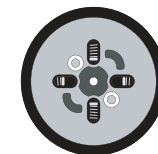
10 Bearing System

The handle on your Speed Spool® reel will only rotate forward for rock solid hook setting. When you release the handle, it will hold its position because of the Zero-Reverse bearing, never losing an inch on your catch; an invaluable property to have when you're pulling it in.

Multi-Setting Braking System (MSB)

Multi-Setting Brake **MSB**

In order to combat backlash after a cast your Speed Spool® reel is furnished with both a centrifugal brake system and an externally adjustable magnetic brake system. As the spool accelerates it experiences magnetic resistance as well as friction by four internal brake shoes which slide outwards when engaged. You can control the magnetic brake with a dial on the palming side-plate. To disengage individual brake shoes remove the palming side-plate. The four brake shoes are housed within a disk attached to the spool assembly. When disengaged the brake shoes remain stationary when the spool spins and do not inflict friction on the spool.



Cast Control System

A second feature exists to prevent backlash, the Cast Control System. An adjustment knob is found next to the star drag. This function saddles the spool shaft with steady pressure in order to stabilize spool speed.

To calibrate the system, reel your lure in until it rests on the tip of the rod, then tighten the knob until taut. Depress the thumb bar, and holding the rod horizontally loosen the knob slowly until the lure begins to descend. The spool should continue to spin after the lure contacts the ground, but should not complete more than one full rotation. If the spool does not continue to spin, the knob is too tight. If the spool completes more than one rotation, the knob is too loose. Repeat until you have achieved the desired results.

Bowed 95MM Aluminum Handle

Our bowed 95 mm aluminum handle will give you all the cranking power you need. The Lew's® custom SoftTouch contoured paddle knobs are an added bonus known for a comfortable grip and ease for all day fishing.



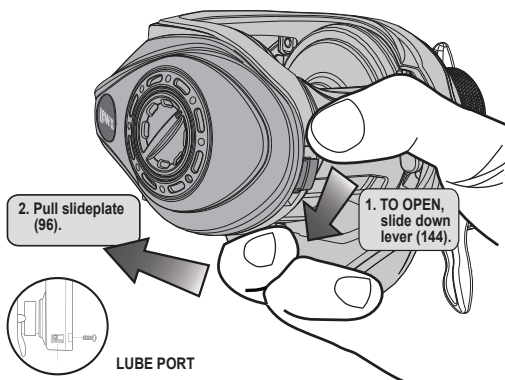
TOURNAMENT LASER[®] CLASSIC SPEED SPOOL[®] SLP TLC1SH

Maintenance and Care

When applying lubricant to your Speed Spool[®] reel, avoid using multi-purpose oil. Use lightweight oils or greases made for fishing reels. Apply oil to all bearings, the crankshaft and the worm gear. Apply grease to the bushings, pinion gears, drive gears, and crank gears.

After usage, your reel should be inspected for dirt or sand and cleaned if excessive build-up is present. If your reel has come in contact with saltwater it is important to flush all parts with water, dry and re-lubricate your reel. Through diligent cleaning and maintenance your Lew's[®] reel will provide you with years of reliability and sound performance.

fig 1 To remove palming sideplate slide down lever (144), and pull slideplate off (96).

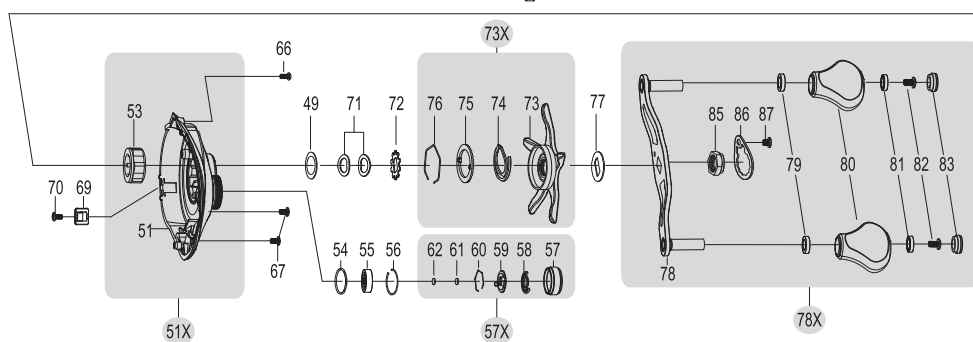
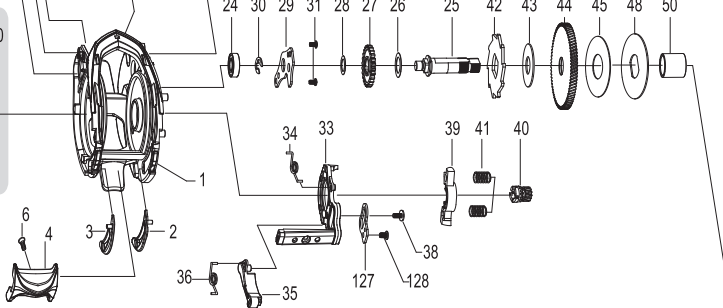
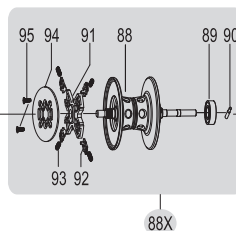
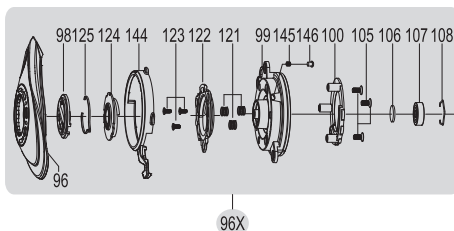


For professional cleaning and maintenance send your reel postage prepaid to:

Lew's 3031 N. Martin Ave.
Springfield, MO 65803
Phone: 877-470-5397
FAX: 1-417-881-5387
lews.com



For Warranty information and registration go to lews.com



One Year Limited Warranty

Lew's[®] warrants its products¹ to withstand normal² use for the purpose designed and intended when manufactured for a period of one (1) year from the original retail sale date to the original retail consumer. Lew's[®] will at its option repair or replace³ Lew's[®] products when required for the warranty period and return⁴ the product to the owner at no additional⁵ cost to the owner.

¹Numerous products have been manufactured under variations of the Lew's[®] name and under the Lew's[®] Logo by multiple businesses over the past 50 years. This warranty is specifically for products manufactured on behalf of Lew's[®] of Springfield, Missouri USA since January 1, 2010. Lew's[®] products manufactured by or on behalf of other entities prior to January 1, 2010 are not covered by this warranty. In all circumstances, this Warranty is Limited in Value to the original retail value of the product and is limited to actual damage to the Lew's[®] product and only the Lew's[®] product. ²Loss of a product, and loss/damage of a product or parts due to the attempted repair or servicing of a Lew's[®] product by any person or business other than Lew's[®] or Lew's[®] Authorized Warranty Service Agent, and damage caused by or resulting from abuse, misuse, lack of recommended maintenance, accident, acts of God, and shipping damages occurring in transit to Lew's[®] or Lew's[®] Authorized Agent are outside the scope of Lew's[®] Limited Warranty and will be repaired through Lew's[®] after warranty services at the expense of the consumer. ³Any products replaced by Lew's[®] will be new or remanufactured by a Lew's[®] Authorized Agent with the same or next model upgrade product. ⁴Lew's[®] will return warranted products to the consumer by reasonable means as determined by Lew's[®]. ⁵Express or expedited services are the responsibility of the consumer as is sending the product to Lew's[®] or Lew's[®] Authorized Agent, for Warranty Service. Lew's[®] and Lew's[®] Service Agents as authorized by Lew's[®] are the sole agents authorized to repair or replace Lew's[®] products under the terms of this warranty. Only written changes by an officer of Lew's[®] can alter the terms or conditions of this warranty.

This warranty gives you specific legal rights including additional rights extended by some states which do not allow certain exclusions and limitations. Any action brought against Lew's[®] for the purpose of settling a warranty dispute shall be brought and litigated in the State of Missouri, County of Greene.

Key#	Part Name	Key#	Part Name	Key#	Part Name
1	FRAME	43	RATCHET WASHER	83	HANDLE KNOB CAP
2	CLUTCH BAR PLATE-R	44	DRIVE GEAR	85	HANDLE NUT
3	CLUTCH BAR PLATE-L	45	DRAG WASHER-L	86	HANDLE NUT RETAINER
4	CLUTCH BAR	48	DRAG WASHER-D	87	SCREW
6	CLUTCH BAR SCREW	49	SLEEVE WASHER(OPTIONAL)	88	SPOOL
7	LEVEL WIND ASSEMBLY	50	SLEEVE	88X	SPOOL ASSEMBLY
8	PIPE	51	GEAR SIDE COVER	89	BALL BEARING
9	WORM SHAFT	51X	GEAR SIDE COVER ASSEMBLY	90	PIN
10	BALL BEARING	53	ONE WAY CLUTCH	91	BRAKE HOLDER
12	IDLER-S	54	O-RING	92	BRAKE SHOE
13	WORM SHAFT PIN	55	BALL BEARING	93	BRAKE SHOE SPRING
15	WORM SHAFT BUSHING-B	56	BEARING RETAINER	94	MAGNET PLATE
16	WORM SHAFT WASHER(OPTIONAL)	57	CAST CONTROL CAP	95	MAGNET PLATE SCREW
17	E-RING	57X	CAST CONTROL CAP ASSEMBLY	96	PALM SIDE COVER
18	PILLAR	58	CLICKER	96X	PALM SIDE COVER ASSEMBLY
19	LEVEL WIND PIN	59	CLICK PLATE	98	CONTROL DIAL
20	SPACER(OPTIONAL)	60	CLICK PLATE RETAINER	99	SPOOL COVER
21	LEVEL WIND NUT	61	TENSION WASHER	100	MAGNET HOLDER ASSEMBLY
22	FRONT COVER	62	SPOOL SPACER-B	105	SPOOL COVER SCREW
23	FRONT COVER SCREW-A	66	GEAR SIDE COVER SCREW-A	106	SPOOL SPACER-A
24	BALL BEARING	67	GEAR SIDE COVER SCREW-B	107	BALL BEARING
25	CRANK SHAFT	69	LUBE PORT CAP	108	BEARING RETAINER
26	IDLER-L WASHER-A	70	LUBE PORT CAP SCREW	121	SLIDE CAM SPRING
27	IDLER-L	71	DRAG SPRING WASHER	122	SLIDE CAM-H
28	IDLER-L WASHER-B	72	CLICK HOLDER	123	SLIDE CAM SCREW
29	BEARING PLATE	73	STAR DRAG	124	SLIDE CAM-D
30	E-RING	73X	STAR DRAG ASSEMBLY	125	CLICK SPRING
31	BEARING PLATE SCREW	74	CLICKER	127	LINK PLATE
33	CLUTCH CAM	75	CLICK PLATE	128	LINK PLATE SCREW
34	CLUTCH SPRING	76	CLICK PLATE RETAINER	141	HOOD
35	KICK LEVER	77	HANDLE WASHER	142	HOOD SCREW
36	KICK LEVER SPRING	78	HANDLE	143	FRONT COVER SCREW-B
38	CLUTCH CAM SCREW	78X	HANDLE ASSEMBLY	144	LOCK LEVER
39	PINION YOKE	79	BALL BEARING	145	CLICK PIN SPRING
40	PINION GEAR	80	HANDLE KNOB	146	CLICK PIN
41	PINION YOKE SPRING	81	BALL BEARING		
42	RATCHET	82	HANDLE KNOB SCREW		