



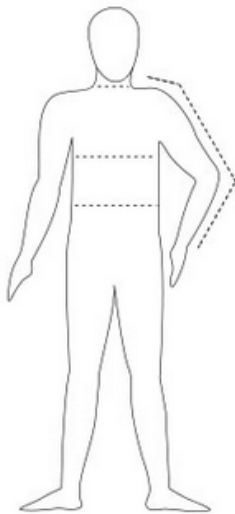
SIZING CHART

MEN'S

Clothing

Size	Neck	Chest	Sleeve	Waist
Medium	15-15.5 in	38-40 in	33-34 in	32-34 in
Large	16-16.5 in	42-44 in	34-35 in	36-38 in
X-Large	17-17.5 in	46-48 in	35-36 in	40-42 in
XX-Large	18-18.5 in	50-52 in	36-37 in	44-46 in
3XL	19-19.5 in	54-56 in	37-38 in	48-50 in
4XL	20-20.5 in	58-60 in	38-39 in	52-54 in
LT	16-16.5 in	42-44 in	35.5-36.5 in	36-38 in
XLT	17-17.5 in	46-48 in	36.5-37 in	40-42 in
XXLT	18-18.5 in	50-52 in	37.5-38 in	44-46 in

HOW TO MEASURE



BUST/CHEST:

With arms relaxed at sides, measure around the fullest part of the chest/bust.

WAIST:

Measure around the natural waistline, smallest part of waist.

SLEEVE:

With arm slightly bent, start from the center back of neck and measure across the shoulder down to the elbow, continuing down to the wrist.

NECK:

Measure around the base/thickest part of the neck.