



2017 PRODUCTS



HUMMINBIRD

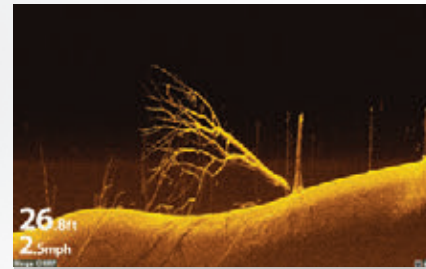
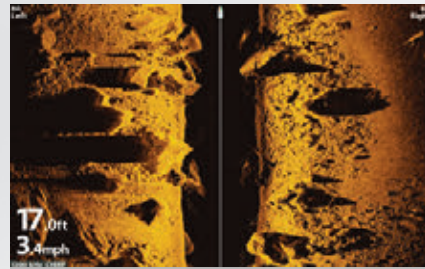
MEGA IMAGING

In the old days, fishermen were willing to settle for a subpar view of the world below. Humminbird® Imaging changed that forever. And now, we're giving you an even clearer window underneath the surface. With patented and patent-pending technology, the high frequency beam of new MEGA Imaging™ CHIRPs across the megahertz range to reveal eye-popping, picture-like detail never before seen above water. Accept no substitutes. Leave no doubt. Because more clarity means less time searching, and more time fishing.

MEGA
SIDE IMAGING



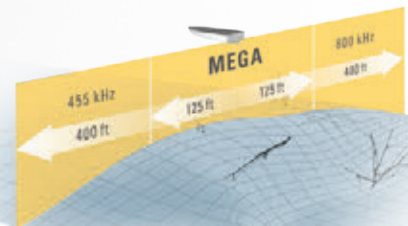
MEGA
DOWN IMAGING



MEGA Imaging has you covered from multiple angles. Choose MEGA Side Imaging™ for an incredible view to the left and right of your boat. Opt for MEGA Down Imaging™ for a crystal clear picture below your boat. Both technologies are built into HELIX® 12, 10 and 9 CHIRP MEGA SI GPS G2N models.

HIGHER FREQUENCY MEANS GREATER CLARITY

Some of the best fishing happens in depths less than 125 ft. And that's where the high frequency beam of MEGA Imaging shines brightest. In MEGA Side Imaging mode, you'll have coverage out to 125 ft on either side of your boat. For depths in excess of 125 ft and coverage out to 400 ft to either side of your boat, the blended beam gives you traditional Humminbird Imaging clarity.



455 kHz

MEGA IMAGING™

— UP TO —
3X
THE FREQUENCY

HUMMINBIRD

AUTOCHART LIVE

Create richly detailed maps of your favorite fishing spots in real time with Humminbird AutoChart® Live, a free feature available with the all new, GPS-equipped HELIX G2 and G2N Series models. Map the water as you drive the boat, with eight hours of built-in recording time. Once your map is live, layer it with vegetation, bottom hardness and MEGA Side Imaging, or use it with i-Pilot® Link™ Follow the Depth Contour and other patented Humminbird features. No added fees. No need to upload your data for the world to see. The future of digital charting has arrived. Better get on board.



CHART MORE DETAIL WITH EVERY PASS

DEPTH CONTOUR

With a major assist from your transducer, AutoChart Live draws a map of your lake's depth contours—complete with actual depth labels—as you drive your boat.



BOTTOM HARDNESS

Now the detail goes even deeper. AutoChart Live uses Sonar to measure and chart bottom hardness, tipping you off to likely hotspots.



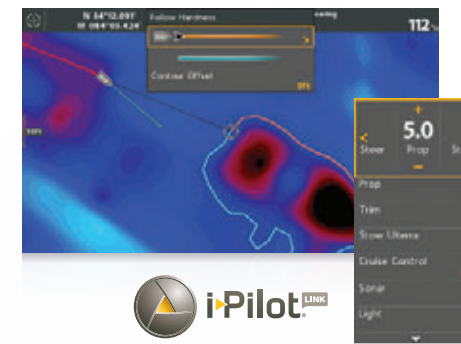
VEGETATION

The weedline can no longer hide. With help from your Sonar beam, AutoChart Live can now instantly map weeds, brush and other vegetation.

LET i-PILOT® LINK™ NAVIGATE FOR YOU

- Follow The Depth Contour
- Follow Bottom Hardness
- Follow Vegetation

Spend less time positioning your boat and more time casting. Follow your newly created AutoChart Live depth contours, bottom hardness or vegetation automatically with optional i-Pilot Link and a compatible Minn Kota® trolling motor.



STORE AND SHARE

HELIX has eight hours of recording memory built in. For years of recording memory, switch to an AutoChart® ZeroLine SD Card, which also lets you export and share your secret fishing spots with a buddy.



CHIRP RADAR

Introducing the next generation of marine radar: new Humminbird CHIRP Radar, featuring CHIRP pulse compression. Setting a new standard for compact solid state radar, this technology delivers superior radar imaging on both long and extremely short ranges. An energy efficient, lightweight design provides safe radiated emissions and substantially reduced power consumption.



HD RADAR FEATURES

See things more clearly with Humminbird CHIRP Radar. Shorelines, buoys, other boats and weather—watch it all take shape on your fishfinder for maximum safety and a competitive edge.

• CHIRP PULSE COMPRESSION

Along with excellent short-range detection and detail, CHIRP Pulse Compression ensures more energy reaches each target for superior imaging at long ranges.

• SMALL TARGET DETECTION

Humminbird's CHIRP Pulse Compression identifies small or weak targets, even while positioned close to strong returns.

• IMMEDIATE AWARENESS

Our solid-state technology is ready to use in seconds, without a lengthy warm-up period.





NEW HELIX 12 SERIES

Every family needs a patriarch. With a full armory of digital weaponry, new networking options and now standard Bluetooth® connectivity, this beast has become even more formidable. From precise Humminbird CHIRP Digital Sonar and optional new MEGA Imaging to the mapmaking power of AutoChart Live, the only mode this big daddy knows is attack. Fish beware. The water has a new alpha.

HD 1280H x 800V 12.1" DISPLAY | **DUAL SD CARD SLOTS** | **UPGRADABLE SOFTWARE** | **Bluetooth®**

HELIX 12 CHIRP · MEGA SI · GPS NETWORKING



- MEGA Side Imaging
- MEGA Down Imaging
- CHIRP Digital Sonar
- SwitchFire
- DualBeam PLUS
- 10Hz Internal GPS
- AutoChart Live
- Built-In Map
- Networking

SONAR

MEGA Side Imaging
MEGA Down Imaging
180° total coverage
MEGA / (2) 86° @ -10dB
800kHz / (2) 55° @ -10dB
455kHz / (2) 86° @ -10dB

Down Imaging Depth:
400 ft (455kHz); 125 ft (880kHz/MEGA)

Side Imaging Range:
800 ft Side-To-Side (455kHz); 250 ft Side-To-Side (880kHz/MEGA)

8000 Watts (PTP), 1000 Watts (RMS)**

10Hz PRECISION GPS

Built-In Cartography: AutoChart Live + Contour XD™

> Additional Model Available:
HELIX 12 CHIRP · SI · GPS G1

HELIX 12 CHIRP · DI · GPS NETWORKING



- CHIRP Down Imaging
- CHIRP Digital Sonar
- SwitchFire
- DualBeam PLUS
- 10Hz Internal GPS
- AutoChart Live
- Built-In Map
- Networking

SONAR

CHIRP Down Imaging
800kHz / (2) 55° @ -10dB
455kHz / (2) 86° @ -10dB

Down Imaging Depth:
400 ft (455kHz); 150 ft (800kHz)

8000 Watts (PTP), 1000 Watts (RMS)**

10Hz PRECISION GPS

Built-In Cartography: AutoChart Live + Contour XD

(Down Imaging/GPS units do not include MEGA Imaging)

> Additional Model Available:
HELIX 12 CHIRP · DI · GPS G1

HELIX 12 CHIRP · GPS NETWORKING



- CHIRP Digital Sonar
- SwitchFire
- DualBeam PLUS
- 10Hz Internal GPS
- AutoChart Live
- Built-In Map
- Networking

SONAR

CHIRP Down Imaging
200kHz / 20° @ -10dB
83kHz / 60° @ -10dB

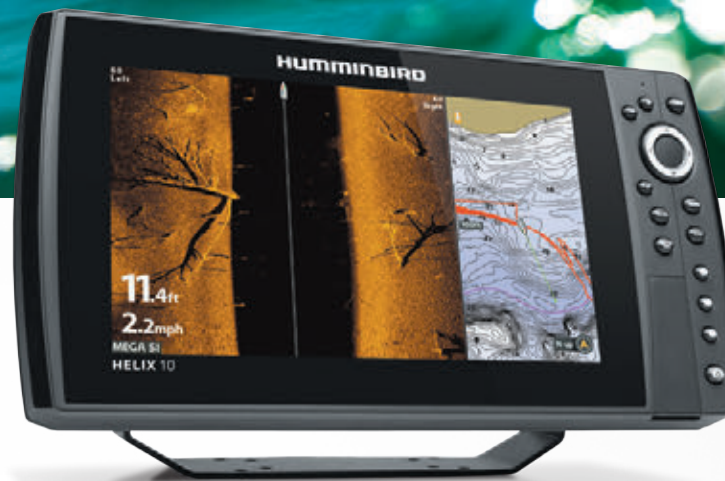
CHIRP Depth: 1500 ft (3500 ft*)

8000 Watts (PTP), 1000 Watts (RMS)**

10Hz PRECISION GPS

Built-In Cartography: AutoChart Live + Contour XD

> Additional Model Available:
HELIX 12 CHIRP · GPS G1



NEW HELIX 10 SERIES

Fish with a perfect 10. Now boasting Humminbird CHIRP Digital Sonar, plus new networking options and standard Bluetooth connectivity, HELIX 10 offers the ideal blend of beauty and brainpower. Identify interesting contours and structure using optional new MEGA Imaging, then map them in real time with AutoChart Live. Once you've got the fish right where you want 'em, it's time for the knockout.

HD 1024H x 600V 10.1" DISPLAY | **DUAL SD CARD SLOTS** | **UPGRADABLE SOFTWARE** | **Bluetooth®**

HELIX 10 CHIRP · MEGA SI · GPS NETWORKING



- MEGA Side Imaging
- MEGA Down Imaging
- CHIRP Digital Sonar
- SwitchFire
- DualBeam PLUS
- 10Hz Internal GPS
- AutoChart Live
- Built-In Map
- Networking

SONAR

MEGA Side Imaging
MEGA Down Imaging
180° total coverage
MEGA / (2) 86° @ -10dB
800kHz / (2) 55° @ -10dB
455kHz / (2) 86° @ -10dB

Down Imaging Depth:
400 ft (455kHz); 125 ft (880kHz/MEGA)

Side Imaging Range:
800 ft Side-To-Side (455kHz); 250 ft Side-To-Side (880kHz/MEGA)

8000 Watts (PTP), 1000 Watts (RMS)**

10Hz PRECISION GPS

Built-In Cartography: AutoChart Live + Contour XD

> Additional Model Available:
HELIX 10 Sonar · SI · GPS G1

HELIX 10 CHIRP · DI · GPS NETWORKING



- CHIRP Down Imaging
- CHIRP Digital Sonar
- SwitchFire
- DualBeam PLUS
- 10Hz Internal GPS
- AutoChart Live
- Built-In Map
- Networking

SONAR

CHIRP Down Imaging
800kHz / (2) 55° @ -10dB
455kHz / (2) 86° @ -10dB

Down Imaging Depth:
400 ft (455kHz); 150 ft (800kHz)

8000 Watts (PTP), 1000 Watts (RMS)**

10Hz PRECISION GPS

Built-In Cartography: AutoChart Live + Contour XD

(Down Imaging/GPS units do not include MEGA Imaging)

> Additional Model Available:
HELIX 10 Sonar · DI · GPS G1

HELIX 10 CHIRP · GPS NETWORKING



- CHIRP Digital Sonar
- SwitchFire
- DualBeam PLUS
- 10Hz Internal GPS
- AutoChart Live
- Built-In Map
- Networking

SONAR

CHIRP Down Imaging
200kHz / 20° @ -10dB
83kHz / 60° @ -10dB

CHIRP Depth: 1500 ft (3500 ft*)

8000 Watts (PTP), 1000 Watts (RMS)**

10Hz PRECISION GPS

Built-In Cartography: AutoChart Live + Contour XD

> Additional Model Available:
HELIX 10 Sonar · GPS G1

ADD ONS + Humminbird LakeMaster · LakeMaster PLUS · SmartStrike™ (available in North America only) | Aerial View | AutoChart & AutoChart PRO | Navionics® Gold · HotMaps™ · Navionics® Platinum+ 360 Imaging® | Minn Kota i-Pilot Link | Bluetooth® Remote | CHIRP Radar | AIS | NMEA 2000® | Autopilot™ | GPS Heading Sensor | 5-Port Ethernet Switch

ADD ONS + Humminbird LakeMaster · LakeMaster PLUS · SmartStrike™ (available in North America only) | Aerial View | AutoChart & AutoChart PRO | Navionics® Gold · HotMaps™ · Navionics® Platinum+ 360 Imaging® | Minn Kota i-Pilot Link | Bluetooth® Remote | CHIRP Radar | AIS | NMEA 2000® | Autopilot™ | GPS Heading Sensor | 5-Port Ethernet Switch

Optional Lakemaster Cartography (as shown on product) is available in North America only. Features and specs are subject to change without notice.

* Optional transducers available for extreme deepwater use. ** To obtain 1000 watts, optional deepwater transducer required.



NEW HELIX 9 SERIES

Want to rise to the top of the food chain? Toughness better be your dominant gene. The HELIX 9 Series is hard on fish and easy on the eyes—now with Humminbird CHIRP Digital Sonar, new networking possibilities, standard Bluetooth connectivity, one-of-a-kind AutoChart Live and optional new MEGA Imaging. Whether this jaw-dropper is the main attraction on your dash or your sidekick at the bow, your prey is gonna wish it had nine lives.

- HD** 800H x 480V 9" DISPLAY
- 2** DUAL SD CARD SLOTS
- UPGRADABLE SOFTWARE
- Bluetooth

HELIX 9 CHIRP·MEGA SI·GPS NETWORKING



- MEGA Side Imaging
- MEGA Down Imaging
- CHIRP Digital Sonar
- SwitchFire
- DualBeam PLUS
- 10Hz Internal GPS
- AutoChart Live
- Built-In Map
- Networking

SONAR
 MEGA Side Imaging
 MEGA Down Imaging
 180° total coverage
 MEGA / (2) 86° @ -10dB
 800kHz / (2) 55° @ -10dB
 455kHz / (2) 86° @ -10dB

Down Imaging Depth:
 400 ft (455kHz); 125 ft (880kHz/MEGA)

CHIRP Digital Sonar
 200kHz / 20° @ -10dB
 83kHz / 60° @ -10dB

CHIRP Depth:
 1500 ft (3500 ft*)

Side Imaging Range:
 800 ft Side-To-Side (455kHz); 250 ft Side-To-Side (880kHz/MEGA)

8000 Watts (PTP), 1000 Watts (RMS)**

10Hz PRECISION GPS
 Built-In Cartography: AutoChart Live + Contour XD

> Additional Models Available:
HELIX 9 SI·GPS G1
HELIX 9 SI·GPS G1 KVD Special Edition

HELIX 9 CHIRP·DI·GPS NETWORKING



- CHIRP Down Imaging
- CHIRP Digital Sonar
- SwitchFire
- DualBeam PLUS
- 10Hz Internal GPS
- AutoChart Live
- Built-In Map
- Networking

SONAR
 CHIRP Down Imaging
 800kHz / (2) 55° @ -10dB
 455kHz / (2) 86° @ -10dB

CHIRP Digital Sonar
 200kHz / 20° @ -10dB
 83kHz / 60° @ -10dB

Down Imaging Depth:
 400 ft (455kHz); 150 ft (800kHz)

CHIRP Depth:
 600 ft (3500 ft*)

8000 Watts (PTP), 1000 Watts (RMS)**

10Hz PRECISION GPS
 Built-In Cartography: AutoChart Live + Contour XD

(Down Imaging/GPS units do not include MEGA Imaging)

> Additional Model Available:
HELIX 9 DI·GPS G1

HELIX 9 CHIRP·GPS NETWORKING



- CHIRP Digital Sonar
- SwitchFire
- DualBeam PLUS
- 10Hz Internal GPS
- AutoChart Live
- Built-In Map
- Networking

SONAR
 CHIRP Down Imaging
 200kHz / 20° @ -10dB
 83kHz / 60° @ -10dB

CHIRP Depth: 1500 ft (3500 ft*)

8000 Watts (PTP), 1000 Watts (RMS)**

10Hz PRECISION GPS
 Built-In Cartography: AutoChart Live + Contour XD

> Additional Model Available:
HELIX 9 Sonar·GPS G1



NEW HELIX 7 SERIES

One look at the HELIX 7 Series and there's no mistaking its Humminbird bloodline. With CHIRP Digital Sonar, new networking options, standard Bluetooth connectivity, one-of-a-kind AutoChart Live and new SmartStrike compatibility, it's the spitting image of its bigger brothers. The ultra-wide aspect ratio gives you ample room to view incredible Humminbird Imaging or 2D sonar side-by-side with detailed cartography screens. No matter your target. No matter the conditions. Game on.

- HD** 800H x 480V 7" DISPLAY
- MICRO SD CARD SLOT (SELECT MODELS)
- UPGRADABLE SOFTWARE
- Bluetooth (NETWORKING MODELS)

HELIX 7 CHIRP·SI·GPS NETWORKING



- CHIRP Side Imaging
- CHIRP Down Imaging
- CHIRP Digital Sonar
- SwitchFire
- DualBeam PLUS
- 10Hz Internal GPS
- AutoChart Live
- Built-In Map
- Networking

SONAR
 CHIRP Side Imaging
 CHIRP Down Imaging
 180° total coverage
 455kHz / (2) 85° @ -10dB

CHIRP Digital Sonar
 200kHz / 28° @ -10dB
 455kHz / 16° @ -10dB

Depth: 100 ft (SI/DI), 1500 ft (CHIRP)

Side Imaging Range:
 480 ft Side-To-Side (455kHz)

4000 Watts (PTP), 500 Watts (RMS)

10Hz PRECISION GPS
 Built-In Cartography: AutoChart Live + Contour XD

> Non-Networking Model Available
HELIX 7 CHIRP·SI·GPS G2

HELIX 7 CHIRP·DI·GPS NETWORKING



- CHIRP Down Imaging
- CHIRP Digital Sonar
- SwitchFire
- DualBeam PLUS
- 10Hz Internal GPS
- AutoChart Live
- Built-In Map
- Networking

SONAR
 CHIRP Down Imaging
 455kHz / 75° @ -10dB
 800kHz / 45° @ -10dB

CHIRP Digital Sonar
 200kHz / 28° @ -10dB
 455kHz / 16° @ -10dB

Depth: 350 ft (DI), 600 ft (CHIRP)

4000 Watts (PTP), 500 Watts (RMS)

10Hz PRECISION GPS
 Built-In Cartography: AutoChart Live + Contour XD

> Non-Networking Model Available
HELIX 7 CHIRP·DI·GPS G2

HELIX 7 CHIRP·GPS NETWORKING



- CHIRP Digital Sonar
- SwitchFire
- DualBeam PLUS
- 10Hz Internal GPS
- AutoChart Live
- Built-In Map
- Networking

SONAR
 CHIRP Digital Sonar
 200kHz / 28° @ -10dB
 455kHz / 16° @ -10dB

Depth: 1500 ft

4000 Watts (PTP), 500 Watts (RMS)

10Hz PRECISION GPS
 Built-In Cartography: AutoChart Live + Contour XD

> Non-Networking Model Available
HELIX 7 CHIRP·GPS G2

HELIX 7 CHIRP·DI NETWORKING



- CHIRP Down Imaging
- CHIRP Digital Sonar
- SwitchFire
- DualBeam PLUS

SONAR
 CHIRP Down Imaging
 455kHz / 75° @ -10dB
 800kHz / 45° @ -10dB

CHIRP Digital Sonar
 200kHz / 28° @ -10dB
 455kHz / 16° @ -10dB

Depth: 350 ft (DI)
 600 ft (CHIRP)

4000 Watts (PTP), 500 Watts (RMS)

HELIX 7 SONAR NETWORKING



- SwitchFire
- DualBeam PLUS

SONAR
 Sonar
 200kHz / 20° @ -10dB
 83kHz / 60° @ -10dB

Depth: 1500 ft

4000 Watts (PTP), 500 Watts (RMS)

ADD ONS + Humminbird LakeMaster·LakeMaster PLUS·SmartStrike™ (available in North America only) | Aerial View | AutoChart & AutoChart PRO | Navionics Gold®·HotMaps™·Navionics+·Platinum+ 360 Imaging™ | Minn Kota i-Pilot Link | Bluetooth® Remote | CHIRP Radar | AIS | NMEA 2000® | Autopilot™ | GPS Heading Sensor | 5-Port Ethernet Switch

Optional Lakemaster Cartography (as shown on product) is available in North America only. Features and specs are subject to change without notice.

* Optional transducers available for extreme deepwater use. ** To obtain 1000 watts, optional deepwater transducer required.

ADD ONS + Humminbird LakeMaster·LakeMaster PLUS·SmartStrike™ (available in North America only) | Aerial View | AutoChart & AutoChart PRO | Navionics® Gold·HotMaps™·Navionics+·Platinum+ | 360 Imaging | Minn Kota i-Pilot Link | Bluetooth® Remote | CHIRP Radar | AIS | Autopilot™ | GPS Heading Sensor | 5-Port Ethernet Switch

ADD ONS + Paddle Wheel Speed Sensor



NEW HELIX 5 SERIES

If fishing is in your DNA, there's no such thing as "too early" or "too far." High expectations go with the territory. The newly retooled HELIX 5 Series answers the call with an uncompromising, widescreen color display. The option of new Humminbird CHIRP Digital SONAR and Imaging Sonar reveals the lake bottom, while GPS mapping, AutoChart Live and SmartStrike compatibility show you the way. Feature for feature, it has what it takes to win the day. Do you? No doubt.

HD 800H x 480V 5" DISPLAY

MICRO SD CARD SLOT (SELECT MODELS)

UPGRADABLE SOFTWARE

HELIX 5 CHIRP · SI · GPS



CHIRP Side Imaging



CHIRP Down Imaging



CHIRP Digital Sonar



SwitchFire



DualBeam PLUS



10Hz Internal GPS



AutoChart Live



Built-in Map

SONAR

CHIRP Side Imaging
CHIRP Down Imaging
180° total coverage
455kHz / (2) 85° @ -10dB

CHIRP Digital Sonar
200kHz / 20° @ -10dB
83kHz / 60° @ -10dB

Depth: 100 ft (SI/DI)
1500 ft (CHIRP)

Side Imaging Range:
480 ft Side-To-Side (455kHz)

4000 Watts (PTP)
500 Watts (RMS)

10Hz PRECISION GPS

Built-In Cartography:
AutoChart Live + Contour XD

HELIX 5 CHIRP · DI · GPS



CHIRP Down Imaging



CHIRP Digital Sonar



SwitchFire



DualBeam PLUS



10Hz Internal GPS



AutoChart Live



Built-in Map

SONAR

CHIRP Down Imaging
455kHz / 75° @ -10dB
800kHz / 45° @ -10dB

CHIRP Digital Sonar
200kHz / 28° @ -10dB
455kHz / 16° @ -10dB

Depth: 350 ft (DI),
600 ft (CHIRP)

4000 Watts (PTP)
500 Watts (RMS)

10Hz PRECISION GPS

Built-In Cartography:
AutoChart Live + Contour XD

HELIX 5 CHIRP · GPS



CHIRP Digital Sonar



SwitchFire



DualBeam PLUS



10Hz Internal GPS



AutoChart Live



Built-in Map

SONAR

CHIRP Digital Sonar
200kHz / 20° @ -10dB
455kHz / 60° @ -10dB

Depth: 1500 ft
4000 Watts (PTP)
500 Watts (RMS)

10Hz PRECISION GPS

Built-In Cartography:
AutoChart Live + Contour XD

HELIX 5 DI



Down Imaging



SwitchFire



DualBeam PLUS

SONAR

Down Imaging
455kHz / 75° @ -10dB
800kHz / 45° @ -10dB

Sonar
200kHz / 28° @ -10dB
455kHz / 16° @ -10dB

Depth: 350 ft (DI), 600 ft (Sonar)

4000 Watts (PTP)
500 Watts (RMS)

HELIX 5 SONAR



SwitchFire



DualBeam PLUS

SONAR

Sonar
200kHz / 20° @ -10dB
83kHz / 60° @ -10dB

Depth: 1500 ft
4000 Watts (PTP)
500 Watts (RMS)

> Portable Model Available
(North America only):
HELIX 5 Sonar G2 PT



NEW PIRANHAMAX 4

Sharper image. Sharper teeth. With modern styling and larger 4.3" color LCD, the new PiranhaMAX™ 4 will give you a fresh perspective on what's below your boat. Thanks to a redesigned, even easier-to-use interface, unlocking the power of optional Down Imaging®, Fish ID+™, fish alarms, depth alarms and zoom has never been simpler. Feature for feature, it packs a technological chomp that no fishfinder in its class can match.

TILT AND SWIVEL MOUNTS

PIRANHAMAX 4 DI



4.3" display
480H x 272V
256 Color

SONAR

Down Imaging
and Dual Frequency
200kHz / 28° @ -10dB
83kHz / 60° @ -10dB
455kHz / 16° @ -10dB

Depth: 600 ft (DualBeam)
2400 Watts (PTP)
300 Watts (RMS)



Dual Beam



Down Imaging

PIRANHAMAX 4



4.3" display
480H x 272V
256 Color

SONAR

Dual Frequency
200kHz / 28° @ -10dB
455kHz / 16° @ -10dB

Depth: 600 ft

2400 Watts (PTP)

300 Watts (RMS)



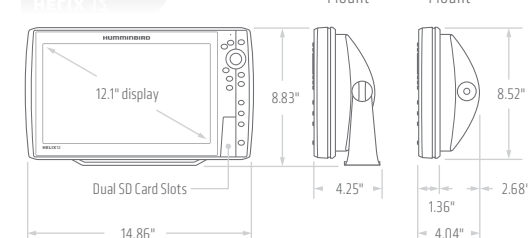
Dual Beam

> Portable Model Available
(North America only):
PIRANHAMAX 4 PT



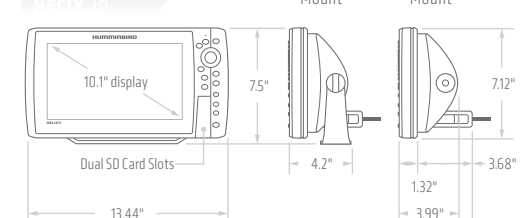
HELIX 12

HELIX 12



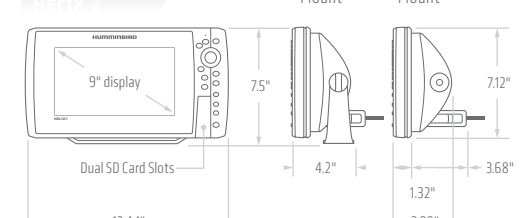
HELIX 10

HELIX 10



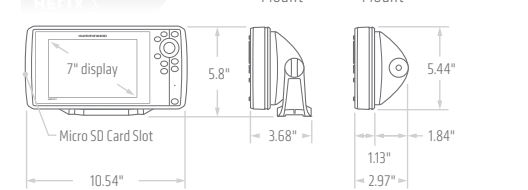
HELIX 9

HELIX 9



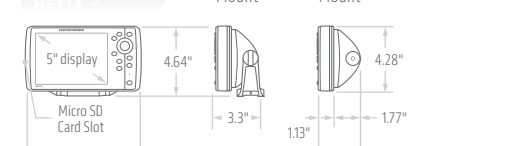
HELIX 7

HELIX 7



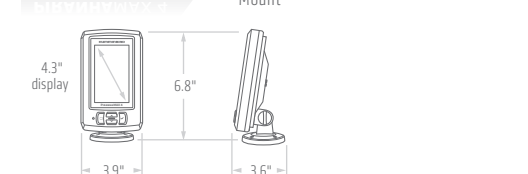
HELIX 5

HELIX 5



PIRANHAMAX 4

PIRANHAMAX 4



ADD ONS + Humminbird LakeMaster · LakeMaster PLUS · SmartStrike™ (available in North America only)
Aerial View | AutoChart & AutoChart PRO | Navionics Gold™ · HotMaps™ · Bluetooth® Remote

ADD ONS + Paddle Wheel Speed Sensor

Optional Lakemaster Cartography (as shown on product) is available in North America only.
Features and specs are subject to change without notice.



Johnson Outdoors Marine Electronics, Inc.
678 Humminbird Lane • Eufaula, AL 36027 • humminbird.com

360 Imaging, AutoChart, AutoChart Live, AutoChart Pro, Down Imaging, Fishin' Buddy, Humminbird, i-Pilot, Minn Kota, Piranha, Riptide, Riptide Terra, Selective Fish ID+, Side Imaging and SwitchFire are registered trademarks of Johnson Outdoors Marine Electronics, Inc.

1100 Series, 300 Series, 500 Series, 600 Series, 700 Series, 800 Series, 900 Series, Autopilot, Contour Elite, ContourXD, Cross Touch, DualBeam PLUS, Fish ID+, HELIX, HumminbirdPC, ICE Flasher Series, Link, Matrix, MEGA Down Imaging, MEGA Imaging, MEGA Side Imaging, One-Touch, PiranhaMAX, PowerDrive, Real Time SONAR, Reflex, Select, SmartStrike, SONAR Echo Enhancement, TriFuel, Ulterra, UniMap, WideSide, X-Press Menu and Xtreme Depth are trademarks of Johnson Outdoors Marine Electronics, Inc.

C-MAP and Jeppesen are registered trademarks of Jeppesen Marine, INC. FUSION is a registered trademark of FUSION Electronics Limited. HotMaps is a trademark of Navionics, Inc. and Navionics S.p.A. Navionics is a registered trademark of Navionics, Inc. NMEA 2000 is a registered trademark of NMEA. RAM is a registered trademark of National Products, Inc. The Bluetooth® word mark and logos are registered trademarks owned by Bluetooth® SIG, Inc.

Specifications are subject to change without notice.

Printed in the U.S.A.

©2017 Johnson Outdoors Marine Electronics, Inc. All Rights Reserved.

