

ASSEMBLY INSTRUCTIONS

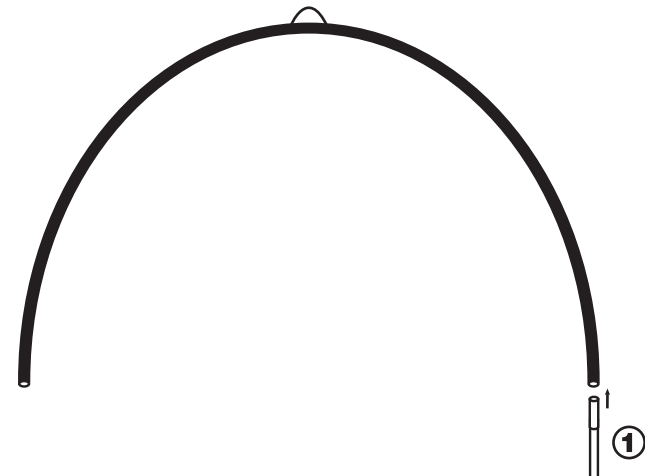
Step 1:

Connect each segment of the Fiberglass Rods (1) until both rods are fully assembled.



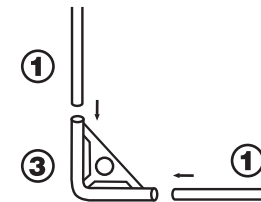
Step 2:

Slide assembled fiberglass rod (1) into bottom net sleeve (2) (bottom sleeve has a backstrap in the middle). Feed the rod through the sleeve until both ends of the rod extend out of each side of the sleeve. Repeat with top net sleeve.



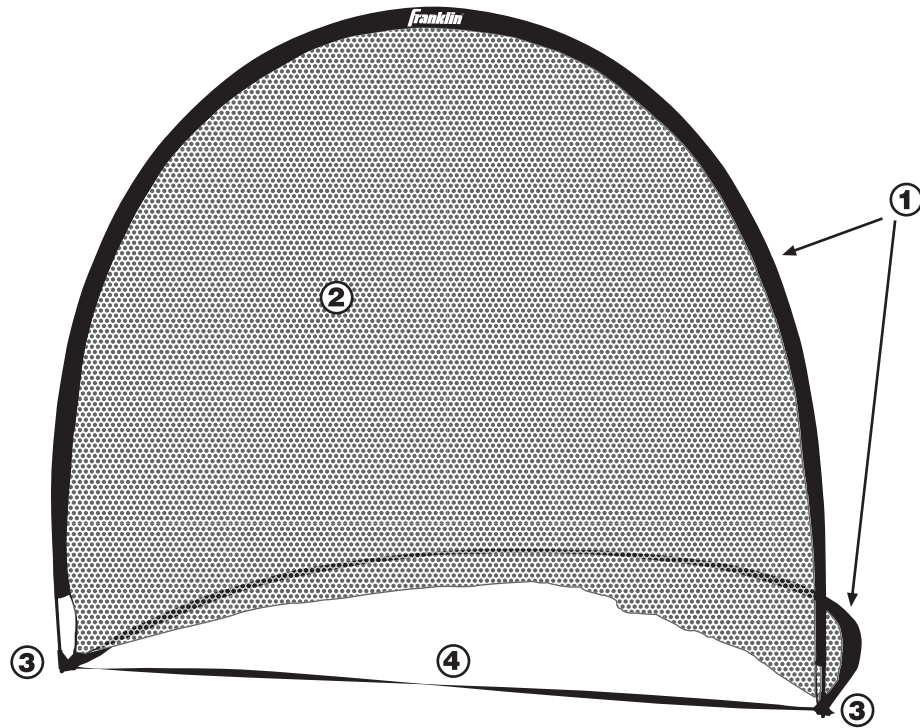
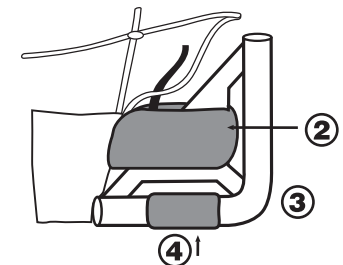
Step 3:

Insert rod (1) ends into L-joint (3). The bottom rod should go into the shorter side. Repeat on other side.



Step 4:

Attach stability strap (4) and net (2) to L-joints (3) and secure to ground with ground stakes (5).



Part	Amount	Description	Replacement
1	2	Fiberglass Rod	19059Z1
2	1	Net	19059Z2
3	2	L-Joint	19059Z3
4	1	Stability Strap	19059Z4
5	4	Ground Stakes	19059Z5
6	1	Carry Bag	—