



Long Range IR Model 1224



20 MP – IR
¼ sec Trigger Speed
Full Featured

Cuddeback's Long Range IR has quickly become our bestselling camera.

Featuring an industry leading ¼ second trigger speed that captures the deer that so many other cameras would miss.

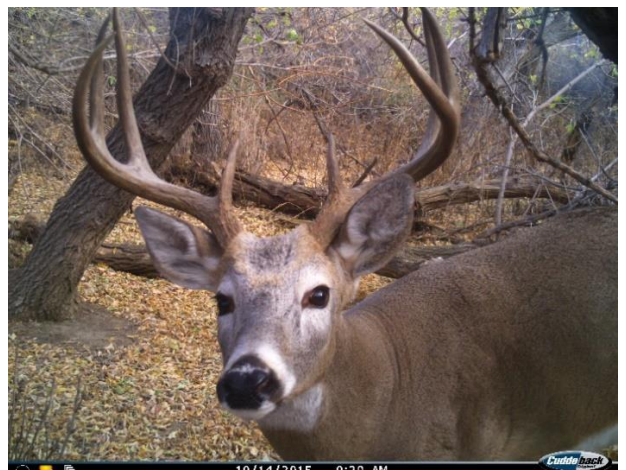
Then add a Super-Fast Recovery Speed that is ready for the next picture within 1 second of taking the first, and the result is Cuddeback can capture 2 photos before many cameras can capture the first.

And the pictures are incredible. 20MP images with stunning daylight color and crisp night images with black blacks and white whites.

On top of the performance, we added a ton of cool and innovative features, such as Zone Control, separate day/night delays, fully customizable time lapse and many more.

We even reinvented the mounting system to make it easier to deploy the camera, and more versatile. With Genius Mount the user does not bang the camera around while strapping it to a tree, he simply straps (or screws) the mount to the tree then nice and gently slides the camera on and off as needed. Plus, optional mounts allow panning, tilting, and locking.

Cuddeback Long Range IR. With this level of performance and value it's easy to see why it is our best seller.





Long Range IR Model 1224

20MP Images

¼ second trigger speed

20 high power LEDs for 100 foot range

Feature	Setting	Advantage
Flash Technology	Infrared with 850nm LEDs	850nm LEDs provide best IR image quality and longest range.
Flash Power	20 High Power IR LEDs 100 feet	Not all LEDs are created equally. Camera uses high power LEDs instead of cheaper low power commodity LEDs. Flash range is highly dependent upon the setting, but in a forest deer can be identified to over 100 feet.
Trigger Speed	¼ second	Fast trigger speeds allows the camera to capture moving animals before they move beyond the view of the camera.
Recovery Speed	1 to 2 seconds	The camera can be ready for the 2 nd shot 1 to 2 seconds after the first allowing the camera to capture a second animal following the first.
Battery System	AA battery, quantity 8	AA batteries allows the camera to be very small
Battery Life	Up to 12 months Over 10,000 images	Battery life is dependent on battery quality, run days, number of images taken, temperature, and other factors.
Day Images	Full Color	5MP or 20MP color images with stunning clarity.
Night Images	IR Black and White	5MP or 20MP properly exposed b/w images with deep blacks and white whites. Not the gray wash out that is generated from lesser cameras.
Image Imprint	Date, Time, Moon Phase, CAM ID	Black bar identification for easy reading.
Zone Control	Yes (Select wide/narrow)	Set the animal detector to wide view or narrow view as required by the situation.
Time Lapse	10 seconds to 24 hours	Allows different settings for day and night.
Camera Delays	1 second to 60 minutes	Provide versatility for trails, scrapes, food plots and feeders.
Burst Mode	1 to 5 images	Select to trigger multiple images per event.
Day & Night Modes	Separate day and night	Separate delays, time lapse, images, video, & burst for day and night.
No Card Mode	Yes	Camera will continue to record images without an SD card.
Operating Modes	EZ & Advanced	Use EZ mode for simple setup and use. Use Advanced Mode for more control over the camera settings.
Video with sound	Yes – 10, 20, 30 seconds	Plus, you can still get an image when you take video
HD Size Images	Yes (16:9)	Select if you prefer wide format images.
Full Size Images	Yes (4:3)	Select if you prefer full sized images.
Genius Mount	Yes	Easier to deploy a camera when the mount is separated from the camera. Optional pan, tilt, lock sold separately.
Warranty Tracker	Yes	No receipt required to validate warranty.
5:2:1 Warranty	Yes	1 year standard warranty. 2 years with online registration. 5 year reduced cost replacement program.

Learn more at www.cuddeback.com

Non Typical, Inc. - PO Box 10447 - Green Bay, WI 54307

Since 1989 – the World's Oldest Trail Camera Company