

Auto-Off feature:

- After 5 minutes a warning pulse will activate.
- After 1 minute in warning pulse mode, laser will turn off.
- Press the switch during warning pulse for laser reset.



Battery Installation: (4) 392

- 1 Unscrew battery cap and remove batteries.
- 2 Install new batteries with positive facing the cap and screw in battery cap and tighten.



WARRANTY:
Three Year Limited
Warranty.



LASERLYTE®
30 N. Alamos Dr. - Cottonwood, AZ 86326
Phone 928-649-3201 - Fax 928-649-3970
www.LaserLyte.com



SCV4



- Mounts on any standard rail
- No Gunsmithing required
- Dual Laser Modes
- Auto-Off Feature
- Full 5mw power

SCV4



FSL-4



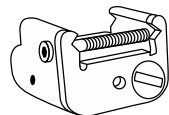
REV1113



www.LASERLYTE.com



V4 Sub Compact Rail Mount Laser



FSL-4

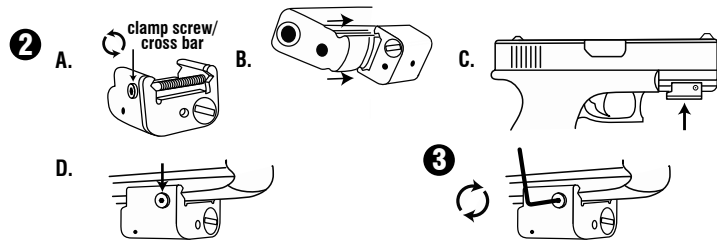


Installation:

① UNLOAD YOUR FIREARM!

- ② A. Loosen and remove cross bar screw from laser.
B. Slide laser onto rail.
C. Align clamp screw/cross bar with cross cut on rail.
D. Insert screw.

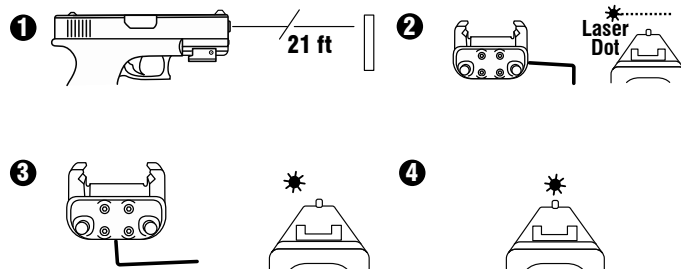
③ Tighten the clamp screw/cross bar until snug.



Laser Sight In:

Assemble weapon and make safe.

- ① Align front and rear sights by shining laser dot 21 ft. (recommended) away in a safe direction.
- ② First! Use windage screw to adjust laser dot .5 inch to the left of front sight.
- ③ Second! Use elevation screw to adjust laser dot .5 inch above front sight.
- ④ Third! Use both screws in 1/4 turn increments to move dot above front sight.
- ⑤ Make final adjustments at shooting range.
(Always end adjustments on a clockwise turn.)



Activation:

- ① Press either of the black buttons once to activate laser: constant or pulse.
- ② Press and hold for 5 seconds to change mode.
- ③ Second press turns laser off.

