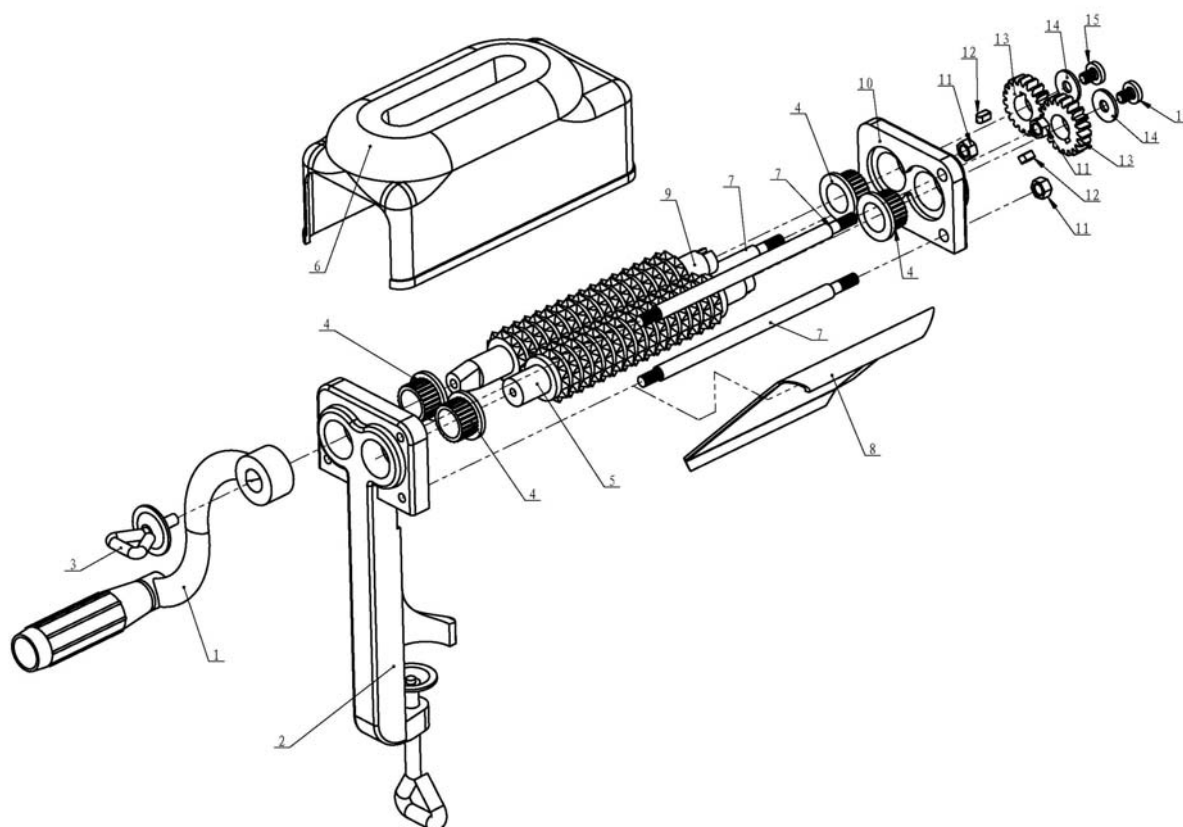




## #656 Clamp on Meat Tenderizer



Number	Part	Quantity
1	Handle	1
2	Main Frame	1
3	Locking Screw	1
4	Spindle Bushings	4
5	Driven Roller	1
6	Cover	1
7	Bar	3
8	Plate	1

Number	Part	quantity
9	Drive Roller	1
10	Side Frame	1
11	Nut	3
12	Key	2
13	Gear Wheel	2
14	Washer	2
15	Screw	2



## **#656 Clamp on Meat Tenderizer**

### **BEFORE USE**

Thoroughly hand-wash all parts, before first use, in warm soapy water to remove the lubricant applied during manufacturing.

**Read these instructions before operating meat tenderizer.**

- Never operate unit without the cover in place. The turning action of the rollers could pull fingers and hands into the rollers and cause serious injury.
- Drop meat through the opening of the cover. DO NOT attempt to force meat into the opening. Turning action of the rollers will carry appropriately sized portions of meat into the unit.
- Use boneless cuts of meat only. Meat should not exceed ½" in thickness. Remove gristle before tenderizing. To experience the maximum tenderness, run meat through the tenderizer twice at right angles. KEEP HANDS A SAFE DISTANCE FROM THE EXPOSED ROLLERS ON THE BOTTOM OF THE UNIT.

### **Assembly**

Unit comes partially assembled.

- On Main Frame (#2) loosen adjusting screw to lowest point on clamp.
- Attach Main Frame (#2) to a flat surface by hand tightening the adjusting screw. Do not over tighten.
- Attach Handle (#1) with Locking Screw (#3).
- Attach Plate (#8). Hold the Main Frame (#2) in your left hand with the driven roller (#5) nearest you (as shown in the schematic). In your right hand hold the plate (#8), with the biggest curved hook at the top and facing away from the tenderizer. Insert the plate (#8) between the driven roller and the bottom bar (#7). Loop the curved hook over the bottom bar (#7) and rest it on the Main Frame notch.
- Snap Cover (#6) in place over entire unit. (Cut out towards the handle side.)

### **To Clean**

- Remove Cover.
- Remove Locking screw to remove handle.
- Loosen adjusting screw and remove Main Frame from table.
- Wash with hot soapy water. Rinse and dry parts thoroughly.
- Spray with Silicon Spray (available at LEM Products) to keep your tenderizer looking like new.

### **Warnings and Precautions**

- Keep out of reach of children.
- Do not operate without the protective cover in place.