

24V Interface Kit 2nd Generation Ductless Systems

Model: KSAIC0301230 (208-230V)

Submittal Data

Job Data: _____ Location: _____

Buyer: _____ Buyer P.O. #: _____ Carrier #: _____

Unit Number: _____ Model Number: _____

Performance Data Certified By: _____ Date: _____



The 24V INTERFACE KIT 2nd Generation is used to connect:

- A **SINGLE ZONE** Ductless System to a 3rd party single stage conventional thermostat (sold separately) providing AUTO fan speed on the indoor unit.
- A **MULTI-ZONE** Ductless System to a 3rd party single stage conventional thermostat (sold separately) providing AUTO fan speed on the indoor unit.
- A **SINGLE ZONE** Ductless Condensing Unit with an approved Fan Coil/Furnace/Cased Coil and a third party single stage conventional thermostat (sold separately) allowing up to 3 different fan speeds on the indoor unit.

Features

- **AUTO Fan speed** on Single Zone and Multi-zone on Ductless applications
- **Up to 3 Fan speeds** on Single Zone Ductless Outdoor matched with Multi-family Fan Coils, Furnace/Cased Coils applications.
- One 24V INTERFACE KIT per indoor head
- Keeps the Inverter Compressor operating as a Variable Speed System
- Rated for outdoor and indoor mounting
- Dry mode contact for active dehumidification control
- Remote ON/OFF contact
- Auxiliary Heat control through the thermostat
- Diagnostic code display LEDs
- 208/230V Transformer Built-in

Parts included

- 24V INTERFACE Control Box
- Installation manual
- Wall anchors
- Screws M4X20mm
- •16.4ft. (5m) Return Air Thermistor Assembly required and installed near or on the unit and on the air inlet side

Accessories, Sold Separately

- 115V transformer RCD# 11203103000393, used only on ductless systems with 115V power.
- Piping Adaptor Kit RCD# 331831-701, used ONLY on Multifamily applications with the FMA4, FMC and FMU fan coils to facilitate piping installation when removing the TXV kit from the indoor unit

Compatibility

The 24V INTERFACE KIT is compatible with most thermostats matched with the Ductless Systems listed below. Before installation, check the compatibility of your Ductless System. Professional installation is recommended.

Type of Indoor unit	Indoor Family Name	Single Zone Outdoor Family Name	Multi-zone Outdoor Family Name	208/230V
HIGH WALL	40MPHA	38MPRA	38MGR	All Sizes
	619PHA	38MPRA	38MGR	All Sizes
	DHMPHA	38MPRA	38MGR	All Sizes
	40MAQ	38MA*R	38MGR	All Sizes
	619P*B	38MA*R	38MGR	All Sizes
	DHMSHA	38MA*R	38MGR	All Sizes
	40MHH	38MHR	38MGR	All Sizes
CASSETTE	40MBCQ	38MA*R	38MGR	All Sizes
DUCTED	40MBDQ	38MA*R	38MGR	All Sizes Except size 58
CONSOLE	40MBFQ	38MA*R	38MGR	All Sizes Except sizes 12 and 58
VERTICAL FAN COIL	FMA4	38MA*R		Sizes 12 to 36
CASED HORIZONTAL FAN COIL	FMC4	38MA*R		Sizes 12 to 36
UNCASED HORIZONTAL FAN COIL	FMU4	38MA*R		Sizes 12 to 36

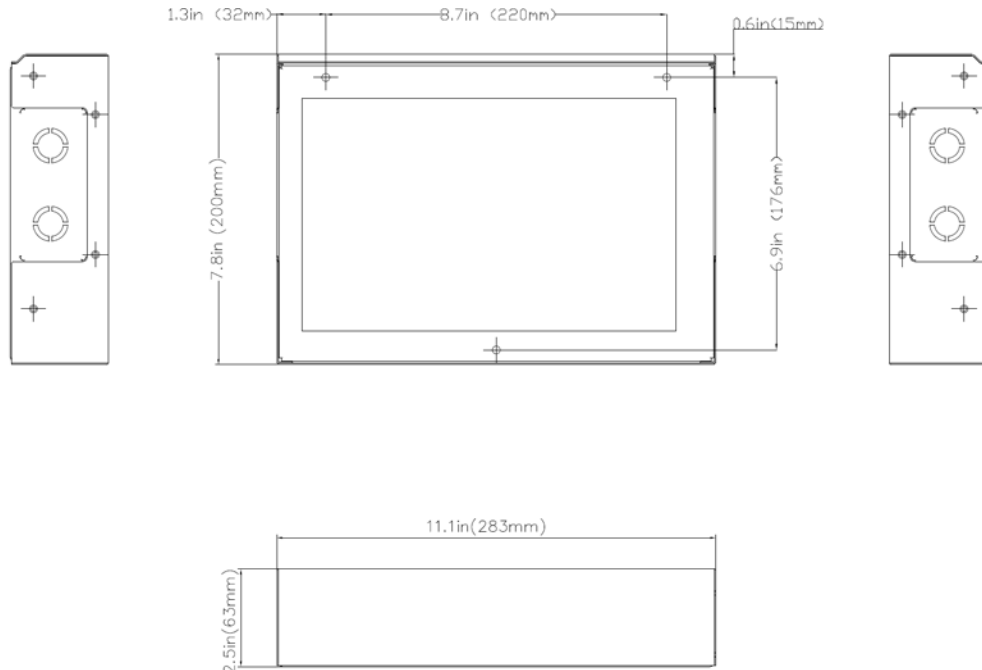
	Compatible
	Not Compatible

Notes: The Indoor unit requires an updated control board for compatibility with the 24V Interface Kit. High Wall units starting with Serial # 4316V10001 are shipped with the compatible control board. Ducted units starting with Serial # 4616V10001 are shipped with the compatible control board. For other model numbers not shown on the table above, please contact your ductless representative.

*Except size 58

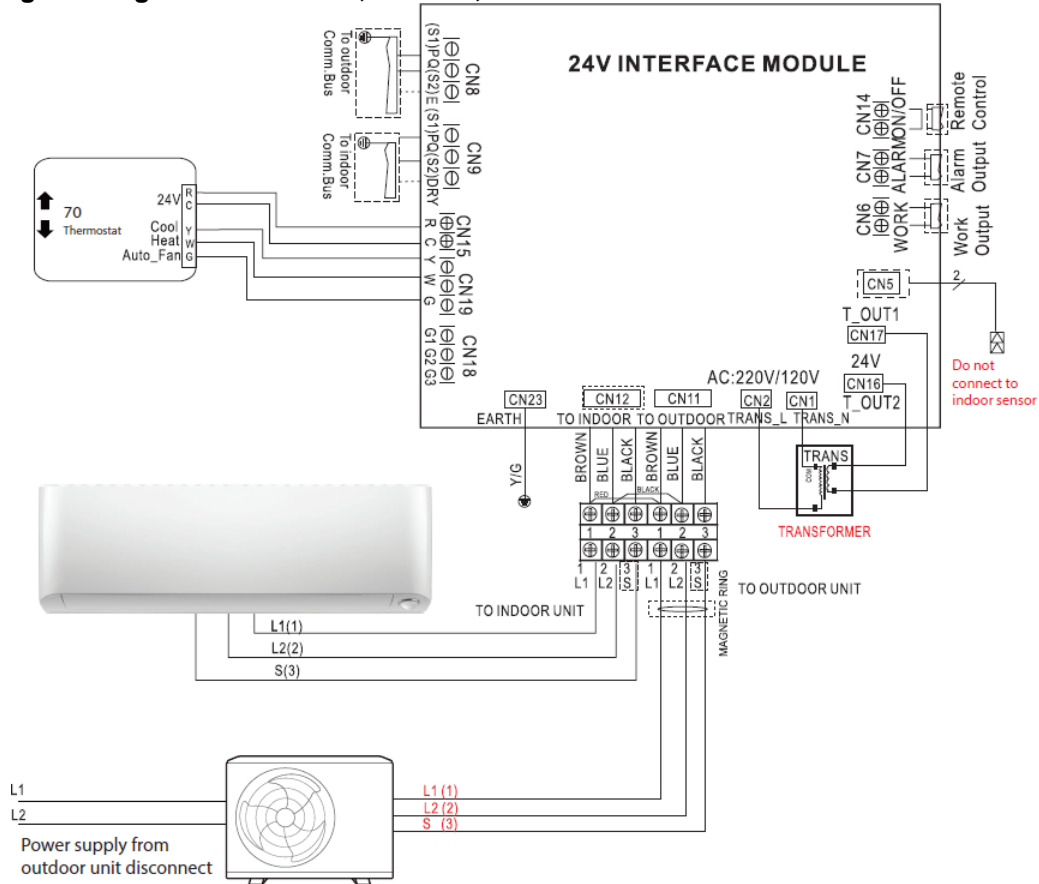
**Except sizes 12 and 58

Construction View

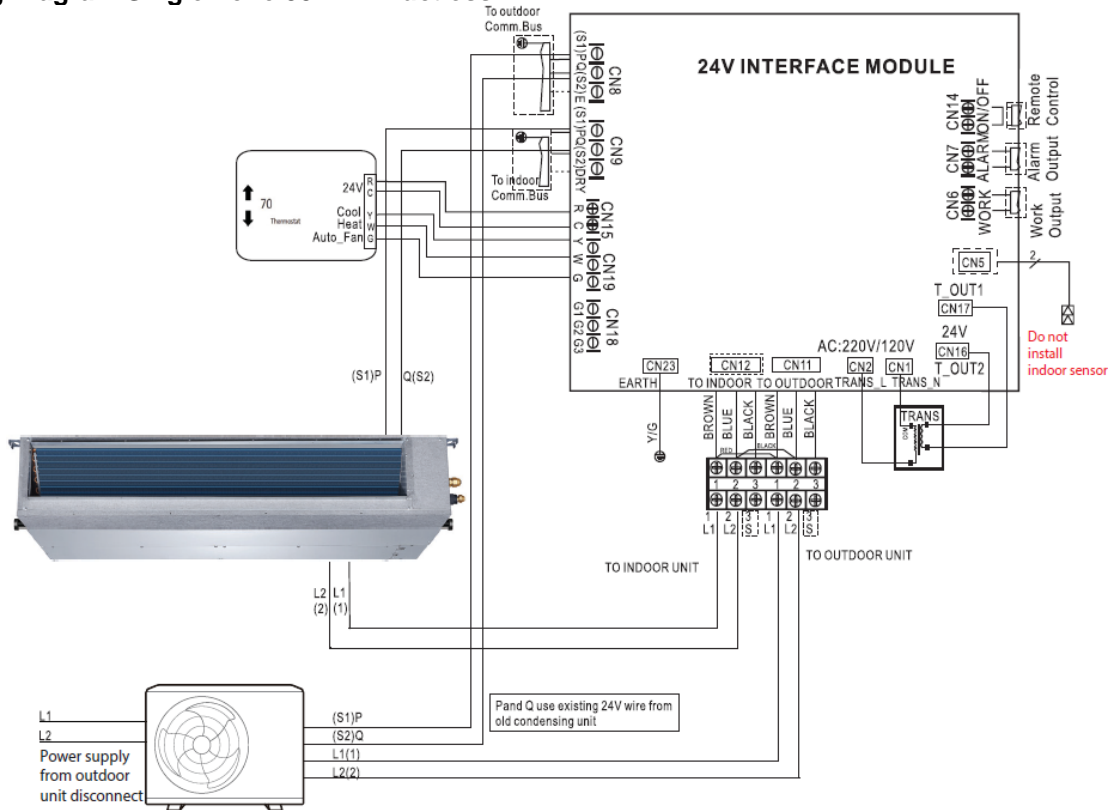


Wiring Diagrams

1. Wiring Diagram Single Zone 38MPRA, 38MA*R, 38MHR or Multi-zone 38MGR Ductless



2. Wiring Diagram Single Zone 38MBR Ductless



3. Wiring Diagram Single Zone Ductless Condensing Unit 38MA*R with an approved Fan Coil/Furnace/Cased Coil

