

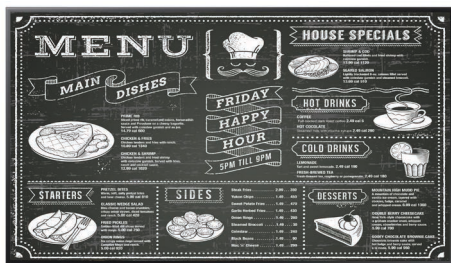
43.0"	QB43N	65.0"	QB65N
49.0"	QB49N	75.0"	QB75N
55.0"	QB55N		



## Make every message come to life.

### QBN Series UHD Commercial Displays

When your messages are ultra-realistic, they're ultra-impactful. Through advanced UHD picture quality, Samsung QBN Series displays foster an inviting and memorable viewing environment in any indoor setting. Featuring Intelligent Picture Quality technology, they'll convert all your content to UHD-level quality. So whether you employ them in a retail, corporate, hospitality or public setting, everything you display on the 4K UHD screen will be stunning. Text is sharp and crisp. Graphics are highly detailed and smoothly textured. If you're looking to make an impact, you're looking for the Samsung QBN Series UHD displays.



### Key Features



4K UHD

#### UHD for Stunning, Ultra-Realistic Detail

With 3840 x 2160 UHD resolution, each QBN Series display showcases content with four times more detail and clarity than FHD.



#### Intelligent Picture Quality Technology

Intelligent Picture Quality technology boosts content from any source to UHD-level quality, and optimizes on-screen text and imagery with crisp edges and fine detail.



#### All-in-One Signage Solution

The embedded MagicInfo Player S6, backed by the powerful Tizen operating system, boosts the display's performance, allows for easy content management and ensures seamless content transition and playback. All without the need for an external signage player or PC.



#### IP5x Certified and Reliable 16/7 Operation

Dust-resistant design and commercial-level cooling technologies offer 16/7 performance with dependable reliability.



#### Configure Multiple Displays Seamlessly

Using the HDMI 2.0 option, businesses can easily configure UHD daisy chains up to 2x2 displays in size.



#### Built-in Wi-Fi

In addition to HDMI 2.0 and DVI connectivity, the QBN series also features built-in Wi-Fi.



#### Retrieve and Control Content Remotely

Pull content from remote laptops directly through the QBN Series display. Samsung Knox™ secures the Remote Workspace connection.

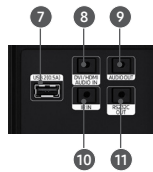
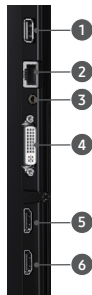
# Samsung QBN Series UHD Commercial Displays



			QB43N	QB49N	QB55N	QB65N	QB75N	
Panel	Diagonal Size	Class Measured	43"	49"	55"	65"	75"	
	Type		42.5" Back Lit	48.5" New Edge	54.6" New Edge	64.5" New Edge	74.5" New Edge	
Display	Resolution		UHD (3840 x 2160)	UHD (3840 x 2160)	UHD (3840 x 2160)	UHD (3840 x 2160)	UHD (3840 x 2160)	
	Pixel Pitch (mm)		0.2451 x 0.2451	0.093 x 0.279	0.105 x 0.315	0.372 x 0.372	0.42975 x 0.42975	
	Active Display Area (H / V) (mm)		941.184 (H) x 529.614 (V)	1073.78 (H) x 604.00 (V)	1209.6 (H) x 680.4 (V)	1428.48 (H) x 803.52 (V)	1650.24 (H) x 928.26 (V)	
	Brightness (Typ.)		350 nits	350 nits	350 nits	350 nits	350 nits	
	Contrast Ratio (Typ.)		5000:1	4000:1	4000:1	6000:1	6000:1	
	Viewing Angle (H / V)		178/178	178/178	178/178	178/178	178/178	
	Response Time (G-to-G)		8ms	8ms	8ms	8ms	8ms	
	Operation Hours		16/7	16/7	16/7	16/7	16/7	
	Haze		0%	2%	2%	2%	2%	
	Dynamic Contrast Ratio		Mega	Mega	Mega	Mega	Mega	
H-Scanning Frequency		30 ~ 81 kHz	30 ~ 81 kHz	30 ~ 81 kHz	30 ~ 81 kHz	30 ~ 81 kHz		
V-Scanning Frequency		48 ~ 75 Hz	48 ~ 75 Hz	48 ~ 75 Hz	48 ~ 75 Hz	48 ~ 75 Hz		
Maximum Pixel Frequency		594 MHz	594 MHz	594 MHz	594 MHz	594 MHz		
Tuner		No	No	No	No	No		
Sound	Speaker Type		Built in Speaker (10W + 10W)	Built in Speaker (10W + 10W)	Built in Speaker (10W + 10W)	Built in Speaker (10W + 10W)	Built in Speaker (10W + 10W)	
Special	IP Rating		IP5X	IP5X	IP5X	IP5X	IP5X	
Connectivity	Input	RGB	DVI-D	DVI-D	DVI-D	DVI-D	DVI-D	
		Video	HDMI 2.0 (2)	HDMI 2.0 (2)	HDMI 2.0 (2)	HDMI 2.0 (2)	HDMI 2.0 (2)	
Output	External Control	HDCP	HDCP 2.2	HDCP 2.2	HDCP 2.2	HDCP 2.2	HDCP 2.2	
		Audio	Stereo Mini Jack, DVI / HDMI / Audio (Common)	Stereo Mini Jack, DVI / HDMI / Audio (Common)	Stereo Mini Jack, DVI / HDMI / Audio (Common)	Stereo Mini Jack, DVI / HDMI / Audio (Common)	Stereo Mini Jack, DVI / HDMI / Audio (Common)	
External Sensor	Wi-Fi / BT	USB	USB 2.0 x 2	USB 2.0 x 2	USB 2.0 x 2	USB 2.0 x 2	USB 2.0 x 2	
		Audio	Stereo Mini Jack	Stereo Mini Jack	Stereo Mini Jack	Stereo Mini Jack	Stereo Mini Jack	
Power	Power Supply	Internal	AC100 - 240 V (+/-10%), 50/60 Hz	AC100 - 240 V (+/-10%), 50/60 Hz	AC100 - 240 V (+/-10%), 50/60 Hz	AC100 - 240 V (+/-10%), 50/60 Hz	AC100 - 240 V (+/-10%), 50/60 Hz	
		Max / Typical / Rating [W]	121 / 76 / 110	132 / 91 / 120	143 / 96 / 130	176 / 125 / 160	220 / 159 / 200	
		Sleep Mode	.05	.05	.05	.05	.05	
Mechanical Specs	Dimensions	Set (W x H x D)	38.2" x 22.2" x 2.3"	45.4" x 25.1" x 2.3"	48.8" x 28.1" x 2.3"	57.4" x 33.0" x 2.3"	64.5" x 38.1" x 2.4"	
		Package (W x H x D)	43.2" x 26.7" x 5.9"	49.2" x 30.6" x 6.0"	53.0" x 33.5" x 6.2"	63.0" x 38.2" x 7.0"	73.7" x 44.5" x 9.2"	
		Weight	21.8 lbs.	29.3 lbs.	33.0 lbs.	55.8 lbs.	83.8 lbs.	
Environmental Conditions	Operating Temperature	Set Package	30.2 lbs.	39.5 lbs.	50.7 lbs.	73.6 lbs.	111.3 lbs.	
		VESA Mount (mm)	200 x 200	200 x 200	200 x 200	400 x 400	400 x 400	
		Stand Type	Foot Stand (Optional)	Foot Stand (Optional)	Foot Stand (Optional)	N/A	N/A	
Features	Key	Bezel Width (mm)	13.5 (Top, Side), 17.7 (Bottom)	13.5 (Top, Side), 17.7 (Bottom)	13.5 (Top, Side), 17.7 (Bottom)	13.5 (Top, Side), 17.7 (Bottom)	16.2 (Top, Side), 19.3 (Bottom)	
		Operating Humidity	0°C - 40°C / 32°F - 104°F	0°C - 40°C / 32°F - 104°F	0°C - 40°C / 32°F - 104°F	0°C - 40°C / 32°F - 104°F	0°C - 40°C / 32°F - 104°F	
		Operating Humidity	10 - 80%	10 - 80%	10 - 80%	10 - 80%	10 - 80%	
Special	H/W	S/W	UHD Signage Display Slim & Light Signage with Built-in MagicInfo S6, SSSP 6.0	UHD Signage Display Slim & Light Signage with Built-in MagicInfo S6, SSSP 6.0	UHD Signage Display Slim & Light Signage with Built-in MagicInfo S6, SSSP 6.0	UHD Signage Display Slim & Light Signage with Built-in MagicInfo S6, SSSP 6.0	UHD Signage Display Slim & Light Signage with Built-in MagicInfo S6, SSSP 6.0	
			Temperature Sensor, Pivot Display, Clock Battery (168 Hrs. Clock Keeping), Built in Speaker (10W 2ch), IP5x, Wi-Fi	Temperature Sensor, Pivot Display, Clock Battery (168 Hrs. Clock Keeping), Built in Speaker (10W 2ch), IP5x, Wi-Fi	Temperature Sensor, Pivot Display, Clock Battery (168 Hrs. Clock Keeping), Built in Speaker (10W 2ch), IP5x, Wi-Fi	Temperature Sensor, Pivot Display, Clock Battery (168 Hrs. Clock Keeping), Built in Speaker (10W 2ch), IP5x, Wi-Fi	Temperature Sensor, Pivot Display, Clock Battery (168 Hrs. Clock Keeping), Built in Speaker (10W 2ch), IP5x, Wi-Fi	
			Auto Source Switching & Recovery, LFD Home UI, Button Lock, Hot Key Option, Plug & Play (Initial Setting)	Auto Source Switching & Recovery, LFD Home UI, Button Lock, Hot Key Option, Plug & Play (Initial Setting)	Auto Source Switching & Recovery, LFD Home UI, Button Lock, Hot Key Option, Plug & Play (Initial Setting)	Auto Source Switching & Recovery, LFD Home UI, Button Lock, Hot Key Option, Plug & Play (Initial Setting)	Auto Source Switching & Recovery, LFD Home UI, Button Lock, Hot Key Option, Plug & Play (Initial Setting)	
			Processor	Coretex A72 1.7GHz Quad-Core CPU	Coretex A72 1.7GHz Quad-Core CPU	Coretex A72 1.7GHz Quad-Core CPU	Coretex A72 1.7GHz Quad-Core CPU	Coretex A72 1.7GHz Quad-Core CPU
			On-Chip Cache Memory	L1 Instruction Cache: 48KB L1 Data Cache: 32KB L2 Cache: 2MB	L1 Instruction Cache: 48KB L1 Data Cache: 32KB L2 Cache: 2MB	L1 Instruction Cache: 48KB L1 Data Cache: 32KB L2 Cache: 2MB	L1 Instruction Cache: 48KB L1 Data Cache: 32KB L2 Cache: 2MB	L1 Instruction Cache: 48KB L1 Data Cache: 32KB L2 Cache: 2MB
			Clock Speed	1.7GHz	1.7GHz	1.7GHz	1.7GHz	1.7GHz
			Main Memory Interface	2.5GB	2.5GB	2.5GB	2.5GB	2.5GB
			Graphics	LPDDR4 1.5GHz 64 bit	LPDDR4 1.5GHz 64 bit	LPDDR4 1.5GHz 64 bit	LPDDR4 1.5GHz 64 bit	LPDDR4 1.5GHz 64 bit
			Storage (FDM)	Graphic Resolution: 1920 x 1080 Output Resolution: 3840 x 2160 (Scale Up From Graphic Processing Result) 8GB (3.88GB Occupied by O/S, 4.12GB Available)	Graphic Resolution: 1920 x 1080 Output Resolution: 3840 x 2160 (Scale Up From Graphic Processing Result) 8GB (3.88GB Occupied by O/S, 4.12GB Available)	Graphic Resolution: 1920 x 1080 Output Resolution: 3840 x 2160 (Scale Up From Graphic Processing Result) 8GB (3.88GB Occupied by O/S, 4.12GB Available)	Graphic Resolution: 1920 x 1080 Output Resolution: 3840 x 2160 (Scale Up From Graphic Processing Result) 8GB (3.88GB Occupied by O/S, 4.12GB Available)	Graphic Resolution: 1920 x 1080 Output Resolution: 3840 x 2160 (Scale Up From Graphic Processing Result) 8GB (3.88GB Occupied by O/S, 4.12GB Available)
			Multimedia	Video Decoder: MPEG-1/2/4, H.263, H.264/AVC, UHD H.264/AVC, VC-1, AVS+, HEVC, JPEG, PNG, VP8, VP9 Audio Decoder: AC3 (DD), MPEG	Video Decoder: MPEG-1/2/4, H.263, H.264/AVC, UHD H.264/AVC, VC-1, AVS+, HEVC, JPEG, PNG, VP8, VP9 Audio Decoder: AC3 (DD), MPEG	Video Decoder: MPEG-1/2/4, H.263, H.264/AVC, UHD H.264/AVC, VC-1, AVS+, HEVC, JPEG, PNG, VP8, VP9 Audio Decoder: AC3 (DD), MPEG	Video Decoder: MPEG-1/2/4, H.263, H.264/AVC, UHD H.264/AVC, VC-1, AVS+, HEVC, JPEG, PNG, VP8, VP9 Audio Decoder: AC3 (DD), MPEG	Video Decoder: MPEG-1/2/4, H.263, H.264/AVC, UHD H.264/AVC, VC-1, AVS+, HEVC, JPEG, PNG, VP8, VP9 Audio Decoder: AC3 (DD), MPEG
IO Ports	USB 2.0	USB 2.0	USB 2.0	USB 2.0	USB 2.0			
Operating System	Tizen 4.0 (VDLinux)	Tizen 4.0 (VDLinux)	Tizen 4.0 (VDLinux)	Tizen 4.0 (VDLinux)	Tizen 4.0 (VDLinux)			
Accessories	Included	Quick Setup Guide, Warranty Card, Power Cord, Remote Controller, Batteries	Quick Setup Guide, Warranty Card, Power Cord, Remote Controller, Batteries	Quick Setup Guide, Warranty Card, Power Cord, Remote Controller, Batteries	Quick Setup Guide, Warranty Card, Power Cord, Remote Controller, Batteries	Quick Setup Guide, Warranty Card, Power Cord, Remote Controller, Batteries		
Certification	Safety EMC Environment	Optional	Stand Mount	No	No	No		
		Warranty	3 Years Onsite (Parts / Labor / Backlight)	3 Years Onsite (Parts / Labor / Backlight)	3 Years Onsite (Parts / Labor / Backlight)	3 Years Onsite (Parts / Labor / Backlight)	3 Years Onsite (Parts / Labor / Backlight)	

## Connectivity

1. USB 1 (1.0A)
2. RJ45
3. RS232C In
4. DVI / MagicInfo In
5. HDMI In 1 (ARC)
6. HDMI In 2
7. USB 2 (0.5A)
8. DVI / HDMI / Audio In
9. Audio Out
10. IR In
11. RS232C Out



Learn More [samsung.com/business](http://samsung.com/business) [insights.samsung.com](http://insights.samsung.com) [samsung.com/b2bdigitalsignage](http://samsung.com/b2bdigitalsignage)  
 Product Support 1-866-SAM4BIZ  
 Follow Us [youtube.com/samsungbizusa](https://www.youtube.com/samsungbizusa) [@SamsungBizUSA](https://twitter.com/SamsungBizUSA)

**SAMSUNG**