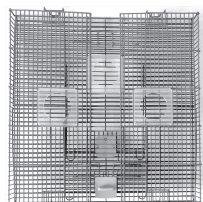




Quick Clean Apartment Hamster Habitat Assembly & Care Instructions

Item # 5319462 WARNING: Use care to avoid pinching of fingers during assembly. Adult assembly required. Handle with care.



A Wire Panel

B Base with Drawer

C Silent Exercise Wheel

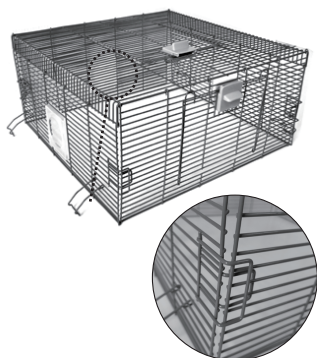
D Easy-Fill Water Bottle

E Easy-Fill Water Bottle Holder

F Easy-Fill Food Dispenser

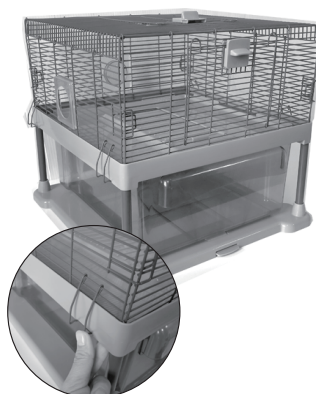
G Hole Cap

Step 1



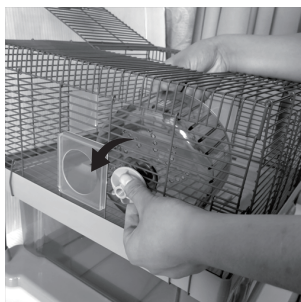
Unfold all four sides of the wire panels (A) to build the top portion of the habitat. Fold out side panels, then fold out front and back panels to engage and secure assembly of the wire panel top portion.

Step 2



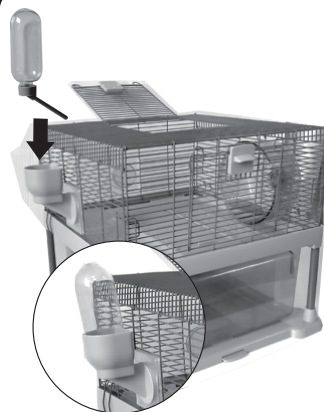
Connect top wire panels (A) onto base (B), ensuring that it rests within the grooves of the platform. Secure with four wire clips.

Step 3



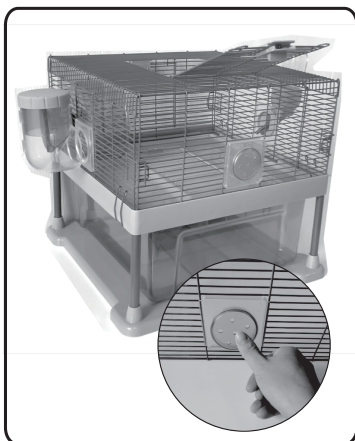
Unscrew cap from the Silent Wheel (C). Open the top access door of the habitat and insert wheel screw through wire panel in your preferred location, ensuring clearance to spin within the habitat. Fasten the wheel from outside the wire panel with cap.

Step 4



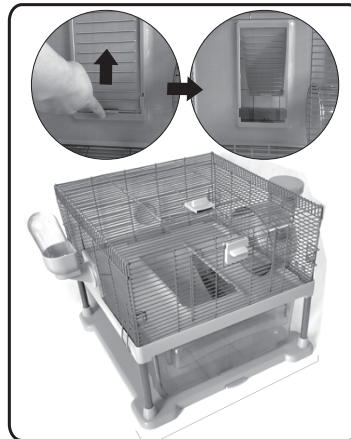
Install the Easy-Fill Water Bottle (D) into the opening of your choosing. Fill bottle with water and place in holder.

Step 5



Install the Easy-Fill Food Dispenser (F) into the opening of your choosing. Fill with food and ensure cap is secure. The remaining access hole to the habitat may be used to connect other accessories, or should be covered by installing hole cap (G).

Step 6



Push front latch down to remove drawer and fill with bedding, slide drawer back into the base (B) to secure. From top access door of the habitat, use the tab on the ramp to slide back until unlocked and lower into drawer. Use the tab to slide ramp forward until it locks into place. Lastly, secure top access door with latch.

ADVICE FOR USE: Always select the appropriate size and type of home for your specific pet. Be sure to observe your pet's behavior with a new home. Remove and replace the home if it becomes damaged.

CARE INSTRUCTIONS: • Cleaning is so convenient your pet won't need to leave their home. This fully removable drawer will streamline your habitat cleaning routine. All it takes is three simple steps.

Step 1) Lift and lock the ramp to secure your pet.

Step 2) Remove the drawer and freshen their bedding.

Step 3) Replace drawer and release ramp to the newly-cleaned space.



- To easily remove bedding or pet waste from the top portion of the habitat, remove the pet safely first. Then, unclip the four wire clips to remove top wire panels (A) from base and clean with a damp cloth and pet safe soap.
- Clean and replace bedding weekly.

Care Tip: Your pet needs a constant supply of food and water as well as occasional treats. Provide your pet with fresh water and food daily. When refilling the water bottle, remove from holder and unscrew cap. Be sure to fill completely with cool, clean water and replace the cap. (A few initial drips are normal while the vacuum forms so the bottle will perform properly.)

If you are not satisfied with this product, return it with your valid proof of purchase for a refund. Conditions apply. See store or PetSmart.com for details. For more information about FULL CHEEKS™ products, call 1-888-839-9638. Dist. by/par: Pacific Coast Distributing, Inc., 19601 N. 27th Ave., Phoenix, AZ 85027