

NOT FOLLOWING ALL SAFETY INSTRUCTIONS PROVIDED CONSTITUTES MISUSE AND MAY RESULT IN DAMAGE TO THE HEATER AND/OR AQUATIC ENVIRONMENT.

- Before removing the heater from your tank, always disconnect it from the power supply and let it cool for approximately 5 minutes.
- Do not operate the heater unless it is completely submersed.
- Never attempt to service or repair the heater in any way.
- Do not use and discard if either the cord or the heater are damaged.
- Do not tamper or damage the surface of the heater with scissors, nails, or any sharp cutting object.
- Do not place hands or any object in the aquarium tank while the heater is connected to electrical mains and is operating.
- Close supervision is necessary if the heater is used near or by children.
- Do not yank the cord from the electrical outlet. Hold the plug and pull from the outlet.
- Make sure that the heater is properly installed before operating it.
- Only use extension cord with proper electrical ratings.
- This appliance is not intended for use by young children or infirm persons without supervision.
- Young children should be supervised to ensure that they do not play with the appliance.

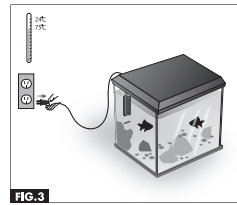
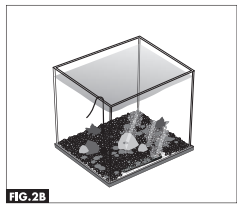
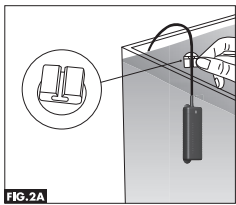
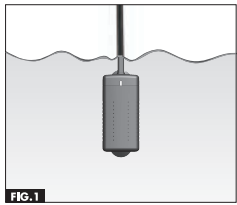
DO NOT OPERATE THE HEATER:

- Under an A/C vent
- In direct sunlight
- Near a heat source
- Under a light source which is on for extended periods of time

INSTALLATION:

Before installation of the heater, be sure to read and understand all safety instructions and warnings.

1. Submerge the heater in the aquarium at least up to the connection with the electrical cord (see fig. 1).
2. Affix the heater, using the suction cup, to the side of the aquarium (see fig. 2A), or position it on the bottom (see fig. 2B). You can also cover it completely with gravel; this heater can operate in any position.
3. After positioning the heater, plug it in. Remember to keep your hands out of the aquarium (fig. 3).



If you are not satisfied with this product, return it with your valid receipt to the place of purchase for a refund.

For more information about Top Fin™ products, please call 1-800-804-2059.

TOPFIN®

Dist. by/par: Pacific Coast Distributing, Inc.  
19601 N. 27th Ave., Phoenix, AZ USA 85027

TOPFIN™

20 Watt Betta Tank Heater  
Instruction Guide



Model: MINI-20B

Rating: 120V, 60Hz, 20W

IMPORTANT SAFETY INSTRUCTIONS

WARNING:

To guard against injury, basic safety precautions should be observed, including the following:

READ AND FOLLOW ALL SAFETY INSTRUCTIONS

DANGER:

To avoid possible electric shock, special care should be taken since water is employed in the use of aquarium and pond equipment. For each of the following situations, do not attempt repairs by yourself; return the appliance to an authorized service facility for service or discard the appliance.

1. If the appliance shows any sign of abnormal water leakage, immediately unplug it from the power source.
2. Carefully examine the appliance after installation. It should not be plugged in if there is water on parts not intended to be wet.
3. Do not operate any appliance if it has a damaged cord or plug, or if it is malfunctioning or has been dropped or damaged in any manner.
4. To avoid the possibility of the appliance plug or outlet getting wet, position aquarium stand and tank to one side of a wall-mounted outlet to prevent water from dripping onto the outlet or plug. A drip-loop (see fig.1) should be arranged by the user for each cord connecting an aquarium appliance to an outlet. The drip-loop is that part of the cord below the level of the outlet, or the connector if an extension cord is used, to prevent water traveling along the cord and coming in contact with the outlet.
5. If the plug or receptacle does get wet, DO NOT unplug the cord. Disconnect the fuse or circuit breaker that supplies power to the appliance. Then, unplug and examine for presence of water in the receptacle.
6. Close supervision is necessary when any appliance is used by or near children.
7. To avoid injury, do not contact moving parts or hot parts, such as heaters, reflectors, lamp bulbs, and the like.
8. Always unplug an appliance from an outlet when not in use, before putting on or taking off parts, and before cleaning. Never yank the cord to pull the plug from the outlet. Grasp the plug and pull to disconnect.
9. Do not use an appliance for anything other than its intended use. The use of attachments not recommended or sold by the appliance manufacturer may cause an unsafe condition.
10. Do not install or store the appliance where it will be exposed to weather or to temperatures below freezing.
11. Make sure an appliance mounted on a tank is securely installed before operating it.
12. Read and observe all the important notices on the appliances.
13. If an extension cord is necessary, a cord with a proper rating should be used. A cord rated for

GFCI ONLY



Drip-Loop

(Fig. 1)

SAVE THESE INSTRUCTIONS

IMPORTANT SAFETY INSTRUCTIONS

less amperes or watts than the appliance rating may overheat. Care should be taken to arrange the cord so that it will not be tripped over or pulled.

14. This appliance has a polarized plug (one bladed is wider than the other). As a safety feature, this plug will fit in a polarized outlet only one way. If the plug does not fit fully in the outlet, reverse the plug. If it still does not fit, contact a qualified electrician. Never use with an extension cord unless the plug can be fully inserted. Do not attempt to override this safety feature.

15. This appliance has no user serviceable parts.

SAVE THESE INSTRUCTIONS

DO NOT PLUG IN BEFORE CAREFULLY READING THE FOLLOWING INSTRUCTIONS

FEATURES:

- Submersible, plastic heater, compact size
- Dry-run protection
- LED indicator:
  - Orange color: heating
  - Green color: at preset temp
- Suitable for 2.6 gallon aquariums (environment temp.: 68°F (20 °C))
- Preset temp.: 77°F (25°C) +/-1°F (with thermal regulator)

OPERATING INSTRUCTIONS:

This compact submersible heater is preset at a temperature of 77 °F (25 °C), provided that the maximum difference between the ambient and preset temperature is less than 41 °F (5 °C).

Model	Rated Voltage	Frequency	Power		Temperature		Recommended Aquarium Size
			Rated Power	Tolerance	Gradient	Tolerance	
MINI-20B	120V	60Hz	20W	(-10% +5%)	77 °F / 25 °C	±1.8 °F / 1.5 °C	Up to 2.6 Gal

It is necessary to monitor aquarium temperature on a regular basis with a reliable aquarium thermometer. If the set temperature is not reached due to various variables (lower environment temperature, large temperature fluctuations, or aquarium next to cooling sources), it will be important to increase the heating power.

ATTENTION:

This heater is for underwater use only. Do not use dry or partially dry. A dry or partially dry heater may reach a temperature as high as 176 °F (80 °C) and could cause burns.

SAVE THESE INSTRUCTIONS