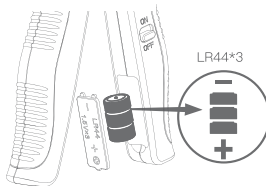


COMPONENTS



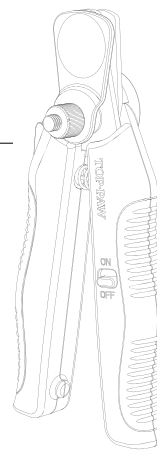
A Nail Clipper with Led Light X1



Battery type: LR44

Battery Voltage: 1.5V x 3

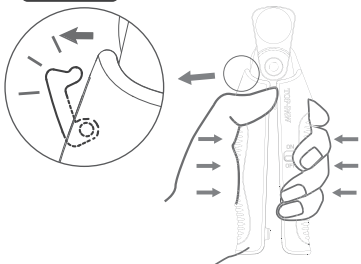
B Button battery X 3



⚠ WARNING

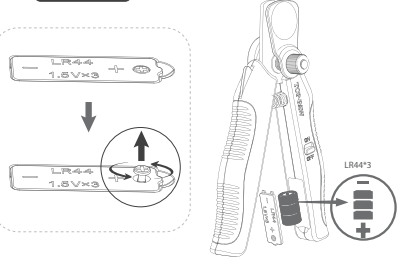
- Contains button or coin cell battery. Hazardous if swallowed.
- This is not a toy. Keep out of reach of children and pets.
- Do not mix old and new batteries.
- Do not mix alkaline, standard (carbon-zinc), or rechargeable batteries.
- Remove batteries when product is not in use for an extended period of time.
- Exhausted batteries are to be removed from the product.
- Battery system : Alkaline manganese button battery.
- Expiration date of Battery: 3 years.
- Name of manufacturer: Foshan Qide New Energy Technology Co., Ltd.

STEP 1



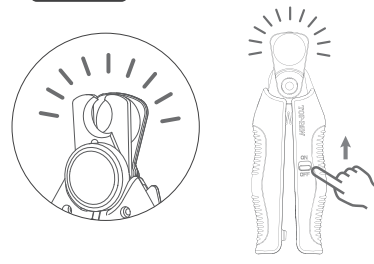
Hold the nail clipper and press inward, the safety lock will automatically bounce off.

STEP 2



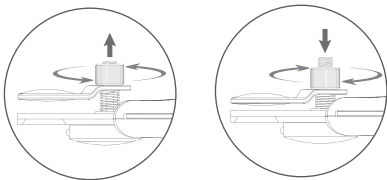
Insert 3 button batteries after opening the battery cover with a Phillips head screwdriver.
Note: The direction of the positive and negative poles + - cannot be reversed).

STEP 3



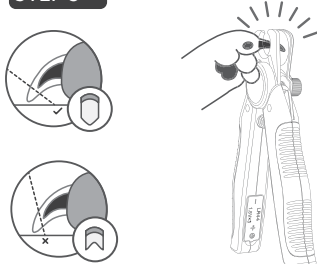
Push the switch up to turn on the LED light to see the blood vessels and nerves, also known as the "quick" of the nails.
Note: LED light may have less illumination effects on dark and black nails.

STEP 4



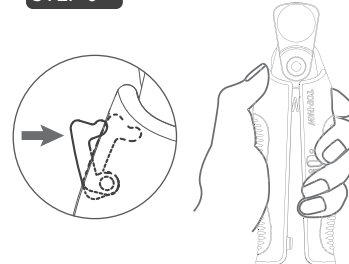
Rotate the adjustment controller to focus the lens on the nail.

STEP 5



Put the pet's nail into the opening above the cutting blades. Use the LED light and magnification lens to more easily see the "quick" of the nail. Cut the pet's nail on a downward angle to ensure the nail grows in properly.

STEP 6



While holding the clipper firmly together, push the safety lock into place to lock the clipper.

CARE INSTRUCTIONS: After using the nail clippers, wipe them off with a clean soft cloth or a small brush.
The product cannot be washed with water, but can be disinfected with alcohol.

ADVICE FOR USE: This product is for pet nails only and cannot be used for other purposes.

If you are not satisfied with this product, return it with your valid proof of purchase for a refund. Conditions apply. See store or PetSmart.com for details.

For more information about Top Paw® products, please call 1-888-839-9638.

Dist. by/par: Pacific Coast Distributing, Inc., 19601 N. 27th Ave., Phoenix, AZ USA 85027

Made in China

TP-22-1475357 / TP-22-1641750