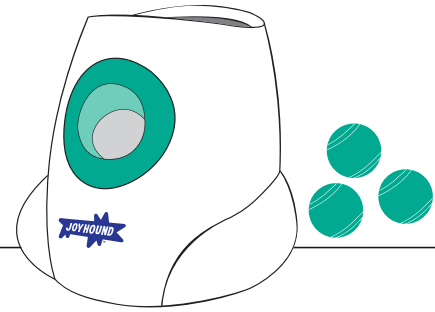




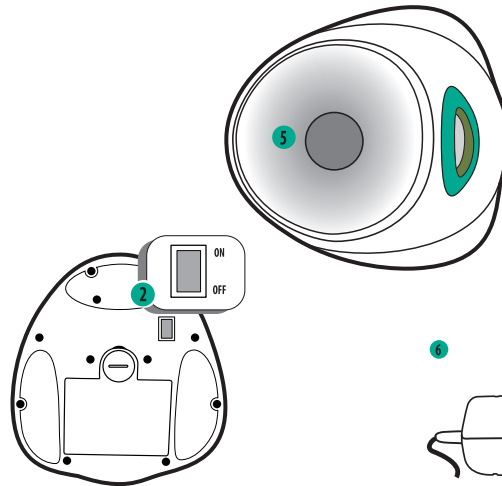
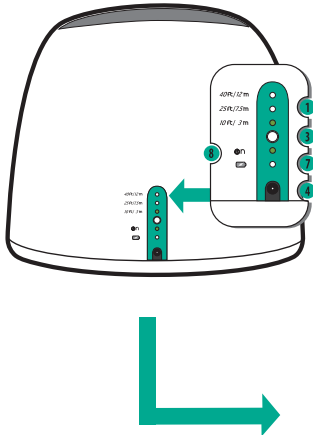
OPERATING INSTRUCTIONS

Electronic Ball Launcher

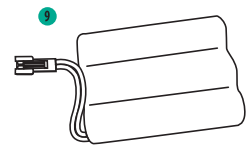
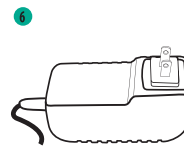
SKU #5331751



COMPONENTS



- | | |
|------------------------------------|--------------------------|
| 1 Launch distance indicator | 6 Power adapter |
| 2 Power on/off button | 7 Charging indicator |
| 3 Launch distance selection button | 8 Power on/off indicator |
| 4 Power adapter cable socket | 9 Battery |
| 5 Balls Basket | |

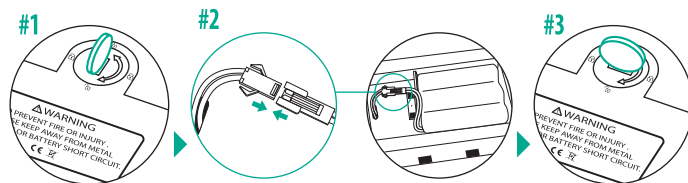


⚠ WARNING

- Supervision required. Observe your dog's behavior with the electronic ball launcher for suitability. It may be inappropriate for your dog. Monitor your dog during the use of the electronic ball launcher. Remove and replace the product and tennis balls if they become damaged. Do not use if damage occurs. This product is intended for dog use only.
- Do not let the dog bite the electrical cable.
- Please always inspect the launch tube to ensure it's clean and free of debris before use.
- Do not operate when any part of the product is wet or standing in water.
- Do not use it when it's raining. An electric shock hazard may exist if the unit is plugged in during or after exposure to water.
- Ensure the electronic ball launcher works appropriately before allowing the dog to play.
- Please keep the instruction manual in a safe place for reference.
- The electronic ball launcher includes and can be used with most standard 2.5" tennis balls.
- Do not attempt to modify the electronic ball launcher or any system components.
- Ensure no animals, people, or valuables are in front of the electronic ball launcher during use. This product works best when used with clean, dry tennis balls.

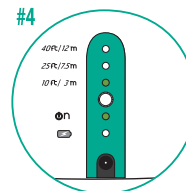
HOW TO USE:

1. INSTALL THE BATTERIES



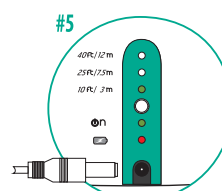
1. Use a coin to rotate the battery cover to unlock the battery compartment at the bottom of the electronic ball launcher.
2. Connect the power line terminal to the battery terminal inside the battery compartment. Then, insert the batteries.
3. Replace the battery cover and use a coin to secure it back into place.

2. TURN ON THE LAUNCHER



4. To turn the launcher on, press the power switch at the bottom of the electronic ball launcher. Press the distance button on the back of the launcher repeatedly to select your desired distance. Load the basket with one tennis ball. After five seconds, the ball will be launched into the air! Do not stand or allow dog to play in front of launcher.

3. RECHARGE THE BATTERIES



5. The charging indicator will emit red light when the batteries are low and green light when the batteries are fully charged. Turn off the electronic ball launcher and plug in the power adapter to recharge the batteries.



PLEASE FULLY CHARGE THE BATTERY BEFORE USING THE PRODUCT.

TECHNICAL SPECIFICATIONS:

Battery Type: INR18650# Li-ion 11.1V 2000mAh

Charger Specifications Input: 100-240Vac 50 / 60Hz 0.6A

- Output no-load voltage: 15.2-15.4Vdc
- Output full load voltage: 14.8-15.0Vdc
- Output rated current: 1.0 amps
- Output maximum current limit: 2.0 amps

WARNING: To avoid damaging the batteries or the electronic ball launcher, do not use the power adapter without the batteries in the unit.

- Do not dispose of batteries in a fire as they may explode. Batteries may also explode if damaged.
- Do not disassemble or modify this product for any other purpose.
- Do not short-circuit the batteries; this can accidentally occur when a metallic object such as a coin, clip, or pen comes in direct contact with the battery compartment's positive (+) and negative (-) terminals. Short-circuiting the terminals may damage the batteries, the metallic object, and the electronic ball launcher.
- To avoid the risk of electric shock, do not expose batteries to liquid.
- Launch distance is 3m/7.5m/12m, and the tolerance is +/-2m.
- Launch distance can be affected if the tennis ball has too much moisture or debris on its surface. Always clean and dry the tennis ball before use.
- Always place the electronic ball launcher on a flat, dry surface.

GUIDELINES:

1. The electronic ball launcher provides an interactive experience between the dog and person. Supervision is required at all times.
2. To avoid overexertion, limit training and time spent with the electronic ball launcher to short intervals of 10-15 minutes, 2-3 times a day.
3. Place the electronic ball launcher in a free and open environment. A dog should be able to walk around the launcher; however, never allow them to stand, sit or play directly in front of it.
4. Do not throw objects towards the launcher.
5. Do not use the electronic ball launcher immediately after a meal. Please wait at least 1.5 hours after the dog has consumed food.
6. Choose a calm environment to train and introduce your dog to the launcher.
7. Every dog is unique and will have a different experience with the launcher. The tips and tricks within this manual only outline a few ways to achieve success. Practice and patience are an important part of playing with this toy.

TIPS & TRICKS

1. Sitting near the ball launcher, practice familiar commands such as "sit" or "stay" with the dog. Reward the dog for achieving the desired behaviors.
2. Starting with the dog at a distance, load the launcher with a tennis ball and encourage them to fetch it. If they're relaxed, move them closer and to the side of the launcher for safety.
3. Hold your hand directly over the basket of the launcher. Encourage the dog to drop the ball into your hand after fetching it. Gradually remove your hand once the dog consistently uses the launcher.

FCC SDoC INSTRUCTIONS:

This device complies with Part 15 of the FCC Rules. Operation is subject to the following two conditions: (1) This device may not cause harmful interference, and (2) this device must accept any interference received, including interference that may cause undesired operation.

CAUTION: Changes or modifications not expressly approved by the party responsible for compliance could void the user's authority to operate the equipment.

Note: This equipment has been tested and found to comply with the limits for a Class B digital device, pursuant to part 15 of the FCC Rules.

These limits are designed to provide reasonable protection against harmful interference in a residential installation. This equipment generates, uses and can radiate radio frequency energy and, if not installed and used in accordance with the instructions, may cause harmful interference to radio communications. However, there is no guarantee that interference will not occur in a particular installation. If this equipment does cause harmful interference to radio or television reception, which can be determined by turning the equipment off and on, the user is encouraged to try to correct the interference by one or more of the following measures:

- Reorient or relocate the receiving antenna.
- Increase the separation between the equipment and receiver.
- Connect the equipment into an outlet on a circuit different from that to which the receiver is connected.
- Consult the dealer or an experienced radio/TV technician for help.

If you are not satisfied with this product, return it with your valid receipt to the place of purchase for a refund.
For more information about JOYHOUND products, please call 1-888-839-9638.
Dist. by/par: Pacific Coast Distributing, Inc., 19601 N. 27th Ave., Phoenix, AZ USA 85027
Made in China