

ASSEMBLY INSTRUCTIONS

Single-Door Folding Crate

30" & 42" Wire Crate Models

30" Crate: SKU # 5329553 • 42" Crate: SKU # 5329554

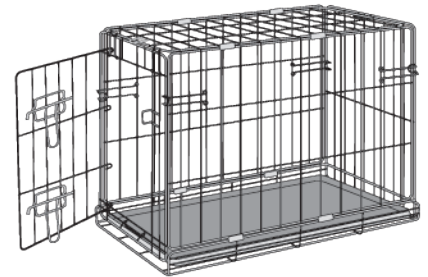
Read and Follow All Safety Information and Instructions. Keep for Future Reference.

CLEANING & MAINTENANCE

- Remove the tray after every use (the barrier **C** needs to be removed prior to this). We recommend disinfecting the tray and then rinsing with water. Wait for the tray to dry before reinserting into the crate.
- Wipe off regularly with a damp cloth.

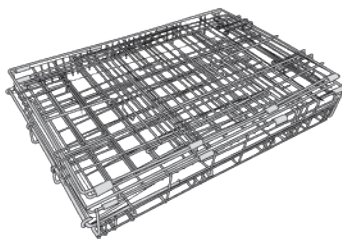
⚠ WARNING:

- For dogs only. To avoid injury or death, remove collar, tags, and leads before placing your pet in the crate.
- USE CAUTION: Product may contain sharp edges. Use care when handling. Not intended for children; Do not let them climb or play around the crate. To avoid scratching the floor, assemble the crate on a soft surface such as a carpet.
- Ensure that the crate sets on a firm, level surface while in use.
- Do not place objects on top on the crate.
- Ensure crate is properly assembled and all door latches are secure before leaving pet in crate.
- Do not drag the crate on the floor.
- Please note the cage is "temporary containment" and not for prolonged use.
- Pet should not be left alone in the crate and should to be supervised while they are in the crate.
- It's pet owner's responsibility to train the pet and use the product properly to avoid any harm to the pet.
- Please note crate is intended to be used for the pets that are well trained.
- It is not 100% guarantee to contain the pet by any means.
- Refer to the following table for the maximum allowable weight of the pet.



Length	30 in (77.5cm) Crate	42 in (109cm) Crate
Width	19.29 in (49 cm)	28.54 in (72.5 cm)
Height	21.65 in (55 cm)	30.9 in (78.5 cm)
Weight Capacity	Max. 40 lbs (18 kg)	Max. 90 lbs (41 kg)

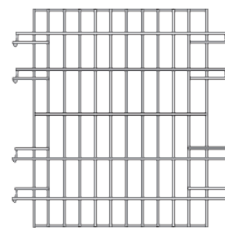
COMPONENTS



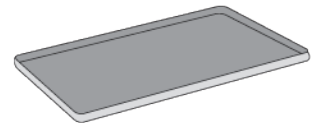
A WIRE CRATE PANELS
(x1)



B CRATE HANDLE
(x1)



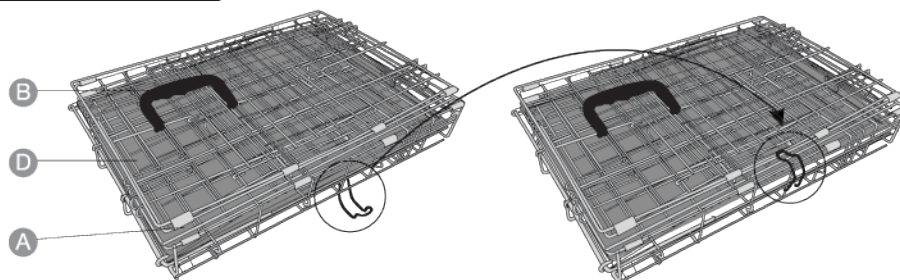
C DIVIDER PANEL
(x1)



D CRATE PAN
(x1)

ASSEMBLY INSTRUCTIONS

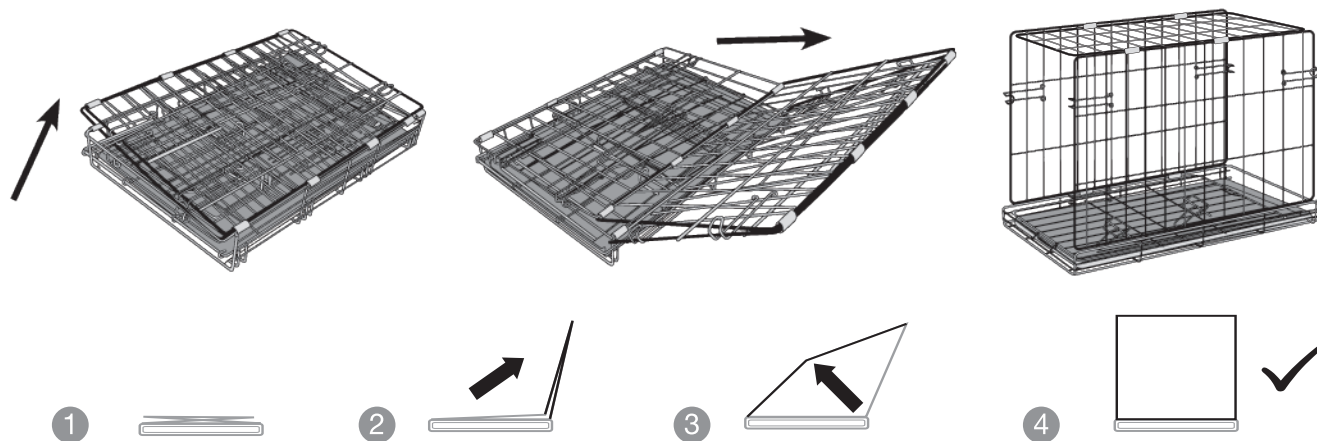
Step 1



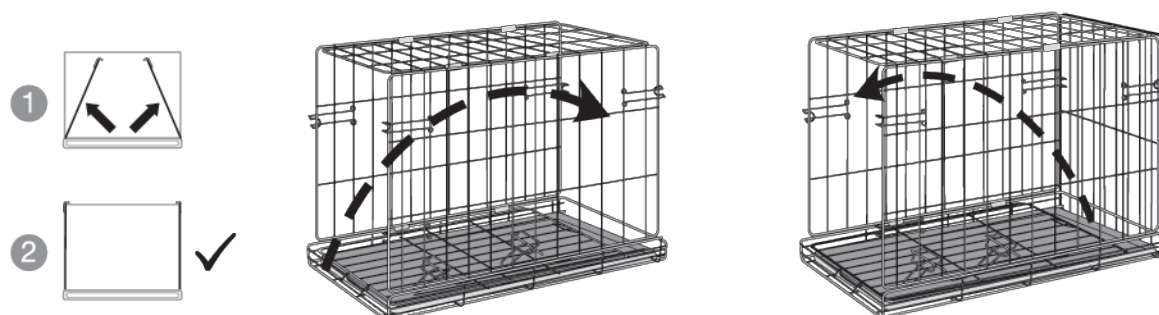
NOTE

Ensure all parts are fully connected and secured before use.

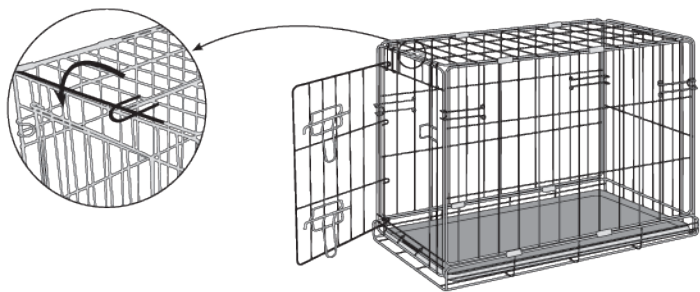
Step 2



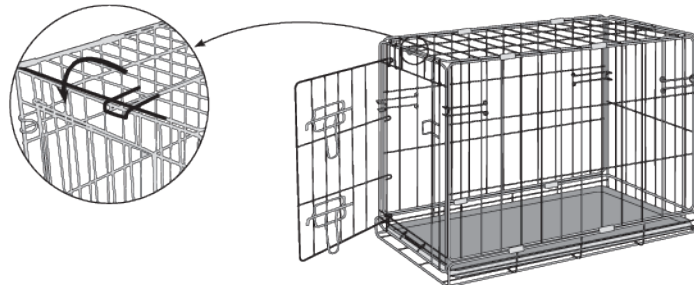
Step 3



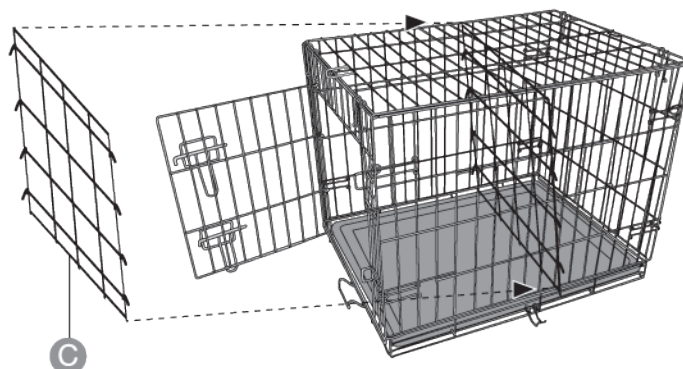
Step 4a 30"



Step 4b 42"



Step 5



NOTE

The Divider Panel **C** is optional and can be used to customize the living space for puppies, allowing them to grow into the wire crate. The Divider Panel can be removed once puppy is full grown.

If you are not satisfied with this product, return it with your valid proof of purchase for a refund. Conditions apply. See store or PetSmart.com for details.

For more information on Top Paw® products, please call 1-888-839-9638.

Dist. by/par: Pacific Coast Distributing, Inc., 19601 N. 27th Ave., Phoenix, AZ USA 85027

Made in China
TP-21-1159500 IM