



www.exo-terra.com

Exo-Terra Solar Glo Installation Instructions

SOLAR GLO

PT2192 / PT2193 / PT2334

Petsmart Item Numbers

#5254726

#5152635

#5152636



Thank you for purchasing the Exo Terra® Solar Glo Sun Simulating Bulb. Please read this operation manual carefully before use, and operate according to the instructions provided for maximum safety and performance. We recommend that you keep this manual handy for future reference.

- **Optimal levels of UVB, UVA, visual light and heat in one bulb**
- **Self-ballasted mercury vapour bulb**
- **Provides the benefits of natural sunlight**
- **Helps prevent metabolic bone disease**
- **Increased UVB penetration distance (+12" / +30 cm)**

Available in 3 sizes:

PT2334 – 80W

PT2192 – 125W

PT2193 – 160W

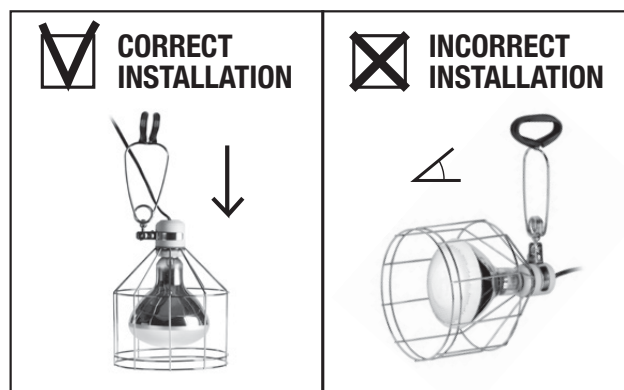
IMPORTANT SAFETY INSTRUCTIONS

Read instructions thoroughly prior to installation and operation.

WARNING:

- This bulb emits UVA (Ultraviolet A) and UVB (Ultraviolet-B) radiation and is intended for reptile use only. Do not stare directly at this or any other bulb while in use. Do not spill or splash water on the bulb. If the glass cracks or breaks, unplug the fixture and discard the bulb after it has cooled down.
- Never touch the lens portion of this bulb while in operation. Severe burn hazard.
- Use ONLY with a well-ventilated ceramic/porcelain bulb holder, which is intended for use with high temperature output bulbs, like the Exo Terra® Light Dome (PT2057), the Exo Terra® Reptile Dome (PT2349) or the Exo Terra® Wire Light (PT2062).** To avoid risk of fire, DO NOT use fixtures with PLASTIC bulb holders.
- Do Not locate bulb or terrarium close to drapes, upholstered furniture or on other combustible surfaces.
- The Exo Terra® Solar Glo should be used only with glass terrariums. DO NOT USE with any type of nylon mesh terrarium. Failure to do so could result in a possible fire hazard.

Exo Terra® Solar Glo Installation instructions



CORRECT INSTALLATION: MOUNT VERTICALLY.

INCORRECT INSTALLATION: DO NOT MOUNT AT AN ANGLE!

- Carefully remove the bulb from its packaging, hold bulb by the base and inspect the glass envelope for any possible cracks or damage. If bulb shows any signs of damage see the warranty section of this manual.
- The Exo Terra® Solar Glo must be housed in a well-ventilated fixture with a ceramic/porcelain base (e.g. Exo Terra® Light Dome (PT2057), the Exo Terra® Reptile Dome (PT2349) or the Exo Terra® Wire Light (PT2062)) that is rated for at least the wattage of the bulb; DO NOT use a plastic socket as it is a fire hazard and will void the warranty.** The Solar Glo must be mounted in a vertically oriented fixture so that the bulb points straight down, not at an angle (see diagram). Mounting this bulb at an angle will reduce its 'burn life' and will void any warranty.
- Do not use this bulb in conjunction with a dimmer or thermostat.
- This bulb is sensitive to high temperatures and vibration. Make sure that it is mounted in a place with good ventilation and where it will not need to be disturbed. Moving the bulb while switched on or still hot can damage the fragile element, shortening its life and also will void the warranty. For maximum security, please use in conjunction with the Exo Terra® Light Bracket (PT2223).
- Mounting Location:** The Solar Glo will function best when mounted outside the terrarium where it is not exposed to extreme heat, humidity and vibration. If you must mount the bulb inside the terrarium, make sure that your reptile cannot come in contact with it. If the bulb shuts off unexpectedly, a safety feature called "thermal reset" has likely occurred (see #7 and #8 for more information).

6. Plug fixture into an electrical outlet (a surge protector is recommended). The Solar Glo will take five minutes to “warm up” and reach its full intensity. The bulb’s output will continue to change hue (or color) until it has completely warmed up.
7. Restarting: The Solar Glo bulb will take 15 minutes to cool down after turning off the bulb, before being restarted. This is due to a thermal reset feature intended to prevent damage due to overheating of the bulb.
8. If the Solar Glo bulb seems to shut off for no apparent reason, one of the following conditions may exist;
 - a. The power being supplied to your outlet is inappropriate or fluctuating. Small changes in line voltage can trip the bulb’s thermal reset mechanism. If the voltage is consistently low then the bulb will not be able to function properly. Check with your local utility or your electrician to verify your voltage. Overdriving the bulb (i.e. higher voltage levels) by as little as 10% can decrease burn life by more than 50% and would void any warranty.
 - b. There is too much heat in or around the terrarium and the bulb. The Solar Glo’s thermal reset feature will shut the bulb off for a cool down period if it gets too hot. Using the bulb in a place or fixture that is not well ventilated can cause heat buildup. If the bulb occasionally shuts off to cool down and later restarts (usually about 15 minutes) this is normal; however, if the bulb shuts off all the time or for several hours at a time, see the warranty section of these instructions.

LIMITED WARRANTY:

1. The Solar Glo is guaranteed to light for six months from the date of purchase under normal daily usage. KEEP YOUR RECEIPT; the original receipt or invoice is required for any warranty transaction. Bulbs will not be replaced without a receipt. If the bulb fails before the warranty period is over, return it with the receipt to the place of purchase for exchange.
2. **IMPORTANT: The Solar Glo has a built-in overheat protection mechanism that will prevent the bulb from restarting, for a period of approx. 15 minutes, after shutdown.** In other words, if you turn it off and then turn it on again, it will not light up again until the switch resets (approx. 15 minutes). Please ensure that this is not the case before returning the bulb. (See Installation instruction #8.)
3. As with any heating device you must exercise caution. The guarantee is strictly limited to the replacement of the Solar Glo bulb only. The warranty does not apply to misuse of the Solar Glo or damage arising from such use including, but not limited to; animal, personal or property damage.

Service

If you have any problems or questions about the operation of this product, please let us try to help you before you return the product to your dealer. Most problems can be handled promptly with a phone call. When you call (e-mail or write), please have all relevant information such as model number and/or part numbers available, as well as the nature of the problem. Please ensure that all maintenance instructions have been adhered to before returning the product to your retailer.

Customer Service and Authorized Warranty Repair Service:

Canada:

Rolf C. Hagen Inc.
20500 Trans Canada Hwy
Baie d’Urfé QC,
H9X 0A2

Toll Free Number 1-800-55HAGEN (1-800-554-2436)
Between 9:00 am and 4:30 pm (Eastern Standard Time)
<http://faq.hagencrm.com/?en>

U.S.A.:

Rolf C. Hagen (U.S.A.) Corp.
305 Forbes Blvd, Mansfield, MA. 02048

Toll Free Number 1-800-724-2436
Between 9:00 am and 5:00 pm (Eastern Standard Time)
mail to: customer.service-usa@rchagen.com

For general information on our whole product range, explore our websites at: www.exo-terra.com or www.hagen.com.

Distributed by:

Canada: Rolf C. Hagen Inc., Montreal, QC H9X 0A2

U.S.A.: Rolf C. Hagen (U.S.A.) Corp., Mansfield MA. 02048