

CITY MICRO™

ASSEMBLY INSTRUCTIONS



Read these instructions carefully before use and keep them for future reference. Your child's safety may be affected if you do not follow these instructions.



www.babyjogger.com

For the sake of your precious cargo, please read these warnings before using your stroller.

! WARNING:

- This stroller is not suitable for running, jogging, skating or rollerblading.
- Prevent serious injury to your child by always using the safety harness.
- Parcels or accessory items, or both, placed on the unit may cause the unit to become unstable.
- Never leave child unattended.
- Recommended weight for seat back pocket is 2 pounds and basket is 10 pounds. Excessive weight may cause a hazardous unstable condition to exist.
- Stroller is not meant to be used for transporting children up or down stairs. Damage resulting to stroller, will not be covered under warranty.
- Child may slip into leg openings and strangle. Never use in reclined carriage position unless safety harness is properly fastened.
- Accessories which are not approved by the manufacturer or distributor shall not be used.
- The passenger shall remain seated (no standing in the stroller).
- Watch out for cars – never assume that a driver can see you and your child.
- This stroller is suitable from birth to 5 years (maximum weight: 50 lbs.).
- Total weight load recommended for this stroller is 62 lbs (50 lbs in seat unit, 2 lbs in seat back pocket, 10 lbs in basket).
- This stroller seats one passenger.
- It may be unsafe to use replacement parts other than those supplied or approved by the manufacturer.

FRAME



1 Unpack stroller from box and set wheels aside.



2 Begin to unfold stroller by pulling the auto-lock lever while pushing the handle up and away from the lower frame. The stroller will click into place when completely open.



3 Turn stroller over to upright position.



4 Snap red safety strap to frame under the fold mechanism before use.



WARNING: Ensure all locking devices are engaged before use.

FRONT WHEEL



- 1 Lay stroller on its back so the handle is resting on the floor.
- 2 Attach the front wheel by sliding the wheel into the axle end until it clicks. Gently tug on wheel to make sure the front wheel is properly attached.

Swivel/Straight Feature



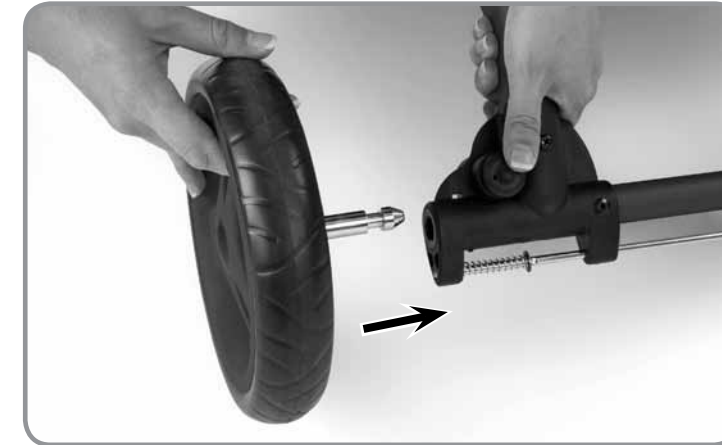
- Raise the lever up to allow the front wheel assembly to swivel.
- Press the lever down to lock the front wheel assembly in the straight position for long distance strolling.

NOTE: When loading and unloading child, lock the front wheel straight.

- Although the front wheel of your City Micro™ locks it is not intended for jogging or exercise purposes.

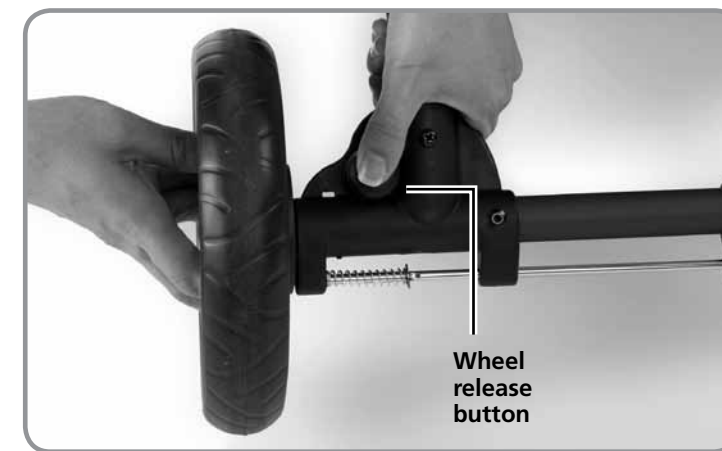
REAR WHEELS

To install rear wheels:



- 1 Align wheel axle with wheel mount on stroller frame.
- 2 Insert the wheel axle into the wheel mount until it clicks into place. Gently tug on wheel to make sure the rear wheel is properly attached.

To remove the rear wheels:



- 1 Press the wheel release button while gently sliding the wheel away from the wheel mount.

CANOPY

To attach canopy to frame:



1 Slide canopy peg into the top hole of the universal mounting bracket until you hear it click into place. (The bottom hole can be used to attach Baby Jogger accessories to your stroller).



2 At the top and on the side of the canopy, wrap Velcro® strap around upper frame handle, fasten snap and attach Velcro® to seat back.



3 Secure the top of canopy around stroller frame with Velcro® tab.

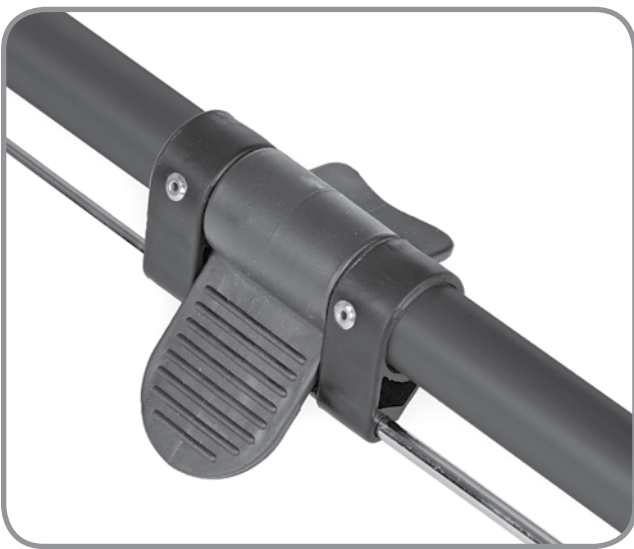


To remove the canopy:

1 Press gray button to release the canopy peg from the universal mounting bracket and unfasten all Velcro® at the top of the canopy.

BRAKE

Engaged



Disengaged



Simply push brake pedal down to engage rear wheel parking brake and lift up to release.

⚠ WARNING: Engage parking device before loading and unloading passenger.

SAFETY HARNESS



To adjust harness height:



- 1 Unclip top of shoulder strap from the seat and re-clip on the pair of seat loops closest to child's shoulder height.

To buckle:



- 3 Fasten both shoulder strap buckles into the crotch strap buckle. The buckles should always be clicked into place before use.

To adjust harness length:



- 1 Pull shoulder pads down close to main harness buckle.
- 2 Hold the plastic guide and pull the strap end to tighten or pull the upper harness strap to loosen.



To unbuckle:



- 4 Press both sides of the shoulder buckles to release them from the crotch buckle.

To recline:



- 1 Pinch the clamp behind the seat, and slide it down to desired recline. Pull seat down on both sides to match recline position of clamp. Reverse steps to return to the upright position.



WARNING:

Always use the crotch strap in combination with the shoulder straps and waist belt.



WARNING:

Avoid serious injury from falling or sliding out. Always properly adjust and fasten safety harness.

BASKET



The basket of your City Micro™ comes fully attached.

To remove the basket:

1 *From the rear of the stroller:* Unsnap the top snaps of the basket from around the frame tubing above the middle crossbar. Unsnap the bottom snaps of the basket from around the frame tubing below the middle crossbar.



2 *From the front of the stroller:* Unsnap lower seat fabric to expose the bottom front portion of frame. Unfasten basket Velcro® from around the frame tubing. Snap seat fabric to frame once complete.

SEAT



Removing the seat:



1 Remove the canopy.
2 Starting with the top snap closest to the handle and working your way down the entire frame, unsnap seat from frame.



3 Unfasten seat straps from around the bottom/back of the frame, located behind the front wheel.



4 Loosen fold strap rings and unhook from fold mechanism.

! WARNING:
Always be sure the safety strap is securely snapped onto the frame before using stroller.

Simple Lift & Fold (Patented)



- 1 Remove child from seat. Unsnap red safety straps from frame. Pull upwards on the "Pull to Fold" strap with a gentle tug and your stroller will fold in half.



To preserve the longevity of your stroller, it is important to perform simple, regular maintenance. From time to time, make sure that the joints and folding areas are still in good condition. If you hear any squeaking or feel tension, you can take your stroller to a local bike shop for added lubrication. All repairs should only be carried out by an authorized dealer.

Washing

Seat Fabric

- You can machine wash your stroller's seat in cold water with a mild detergent.
- Be sure to remove the metal frame from the back of the seat before washing.
- Do not use solvents, caustic or abrasive cleaning materials.
- To minimize shrinkage, simply reattach the seat to the frame to dry.
- Do not press, iron, dry clean, tumble dry or wring the fabric.

Plastic/Metal Parts

- Wipe clean using a mild soap and warm water.
- You must not remove, dismantle or alter any part of the seat folding mechanism or brakes.

Wheel Care

- The wheels can be cleaned using a damp cloth. They will need to be dried completely with a soft towel or cloth.

Storing

- Sunshine can fade seat fabric and dry out tires, so storing your stroller indoors will prolong its good looks.
- Ensure that the stroller is dry before storing for prolonged periods.
- Always store the stroller in a dry environment.
- Store the stroller in a safe place when not in use (i.e. where children cannot play with it).
- DO NOT place heavy objects on top of the stroller.
- DO NOT store the stroller near a direct heat source such as a radiator or fire.

AVAILABLE ACCESSORIES

Car Seat Adaptor

Chicco Car Seat and multi-model versions are available.

Child Tray

Features cup holder and easy to clean surface. Child Tray for double requires use of belly bar.

Grow Anywhere™

A plush stroller companion that starts as a stroller bunting but expands to a foot muff, than stroller liner as your child grows.

Belly Bar

Provides child with a soft padded area to hold on to when the stroller is in use.

Belly Bar Console

Provides additional storage space for your child's snacks and toys.

Plush Stroller Hand Muff

Keeps your hands warm and dry while pushing your stroller. Features a soft, plush interior and weatherproof exterior.

Foot Muff

For children 0-24 mo. Keeps legs & feet warm in inclement weather.

Bassinet/Pram

A traditional hard based pram with plush padding and protective sun canopy.

Universal Parent Console

Features a cup holder and additional storage compartments.

Glider Board

Allows your toddler to ride along. Holds up to 45 lbs.

Cooler Bag

Designed to help keep food or drinks cold. Holds six 12 oz. cans.

Rain Canopy

To protect your baby from inclement weather.

Liquid Holster

A self-leveling beverage holder. Fits most round or square tubing.

Carry Bag

Features specialized storage compartments for your wheels, durable fabric and sturdy carrying strap.

Compact Pram

A portable hard based pram that features plush padding, protective sun canopy and convenient carrying handles.

MP3 Console

Plug your MP3 player into the console and play music for you or your child. Features a large storage compartment and cup holder.

REGISTER YOUR STROLLER ONLINE AT www.babyjogger.com/register

Baby Jogger's Limited Lifetime Warranty:

Baby Jogger warrants that the frame is free of manufacturer defects for the lifetime of the product. Manufacturer's defects include but are not limited to the breaking of welds and frame tube damage. Textile or soft side materials and all other components shall be warranted for one year from the date of purchase (except for tubes and tires). Proof of purchase is required to make a warranty claim and the warranty is only extended to the original purchaser.

THIS WARRANTY DOES NOT COVER:

- Normal wear and tear
- Corrosion or rust
- Incorrect assembly, or the installation of third party parts or accessories not compatible with the original design
- Accidental or intentional damage, abuse or neglect
- Commercial Use
- Improper storage/care of the unit

This warranty specifically excludes claims for indirect, incidental, or consequential damages. The implied warranties of merchantability and fitness for a particular purpose is according to the specific warranty period for this model unit at time of purchase. Some states do not allow the exclusion or limitation of incidental or consequential damages, so the above limitations or exclusions may not apply to you. This warranty gives you specific legal rights, and you may also have other rights which vary from state to state. To know what your legal rights are in your state, consult your local or state consumer affairs office or your state's Attorney General.

If your stroller was purchased outside of the United States please contact the distributor in the country nearest you. Their contact information can be found on our website at http://www.babyjogger.com/international_distributors.aspx. Claims for warranty outside of the country in which the product was purchased may incur shipping charges.

NOTE: When contacting Baby Jogger regarding your stroller, please have your stroller's serial number and manufacturing date ready. It can be found on the lower rear upright of the frame, above the right wheel.

E-Mail: customerservice@babyjogger.com
Call: 1-800-241-1848 between 9am – 6pm EST, Mon. – Fri.
Fax: 1-804-262-6277
Mail: The Baby Jogger Company
8575 Magellan Parkway
Suite 1000
Richmond, VA 23227





Baby Jogger is a Division of Dynamic Brands

8575 Magellan Parkway, Suite 1000 • Richmond, VA 23227
T: 800.241.1848 • F: 804.262.6277 • www.babyjogger.com