



HIGH PERFORMANCE STROLLERS



Performance Single

The Ultimate High Performance Jogging Stroller

Assembly Instructions

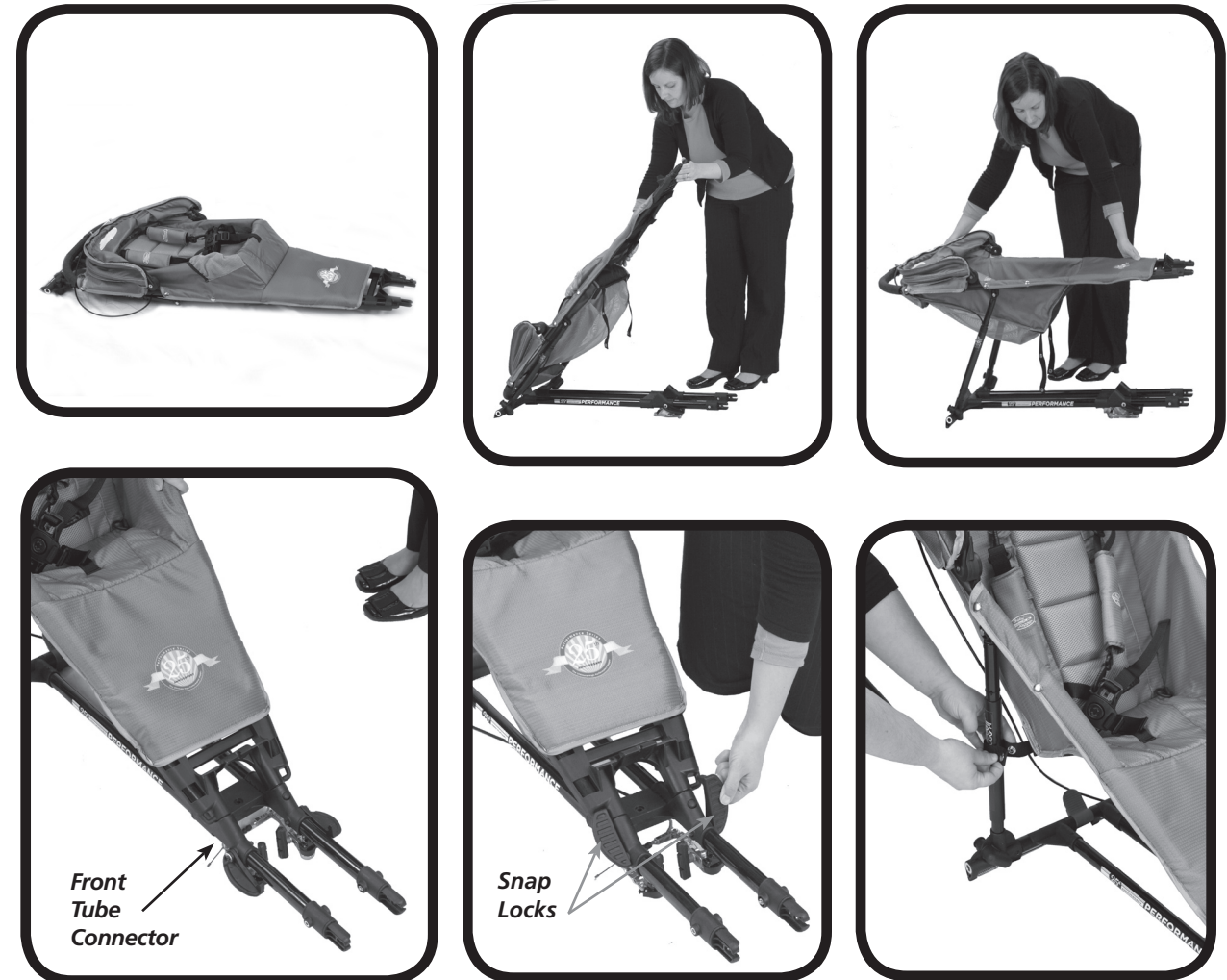
*Read these
instructions carefully
before use and
keep them for
future reference.
Your child's safety may be
affected if you do not
follow these instructions.*

For the sake of your precious cargo, please read these warnings before using your Baby Jogger.

- **WARNING:** Parcels or accessory items, or both, placed on the unit may cause the unit to become unstable.
- **WARNING:** Never leave your child unattended.
- **WARNING:** Recommended weight for seat pocket is 2 lbs (1 kg) and basket is 7 lbs (3.2 kg). Excessive weight may cause a hazardous unstable condition to exist.
- **WARNING:** Stroller is not meant for transporting children up or down stairs. Damage resulting to stroller will not be covered under warranty.
- **WARNING:** Child may slip into leg openings and strangle. Never use in reclined carriage position unless safety harness is properly fastened.
- Accessories which are not approved by the manufacturer or distributor shall not be used.
- Always use your wrist strp – these strollers can really roll, and the wrist strap gives you control if you should slip or fall down.
- The passenger shall remain seated (no standing in the stroller).
- Watch out for cars – never assume that a driver can see you and your child.
- This stroller is suitable from 6 months to 5 years.
- Total weight load recommended for this stroller is 100 lbs (45 kg). (combined passenger and baggage weight)
- This stroller seats one passenger.
- It may be unsafe to use replacement parts other than those supplied or approved by the manufacturer.

The sample product shown in this manual may differ slightly from your production quality Performance stroller. However, this will not affect the assembly or functionality of your Baby Jogger stroller.

Frame

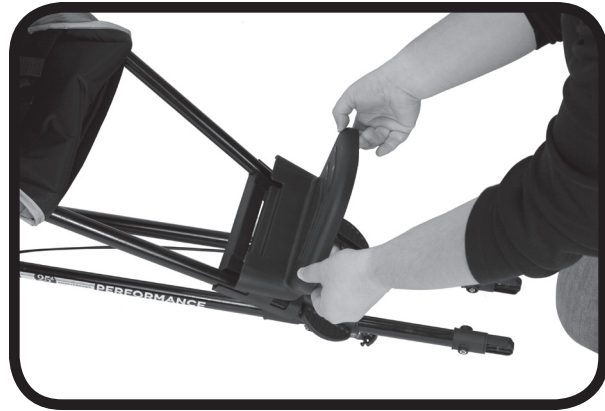


- To assemble, simply unfold frame and insert the front of handle assembly into Front Tube Connector and lock together, securing with Snap Locks. Fasten seat straps around frame.

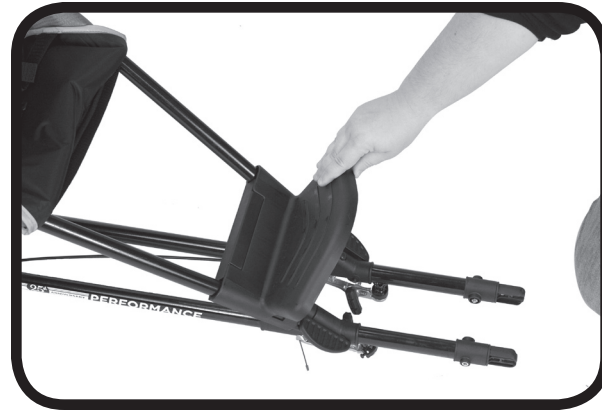


WARNING: Ensure that all locking devices are engaged before use.

Footplate



1 Insert the footplate tab into the footplate holder slot.



2 Snap down onto stroller frame.



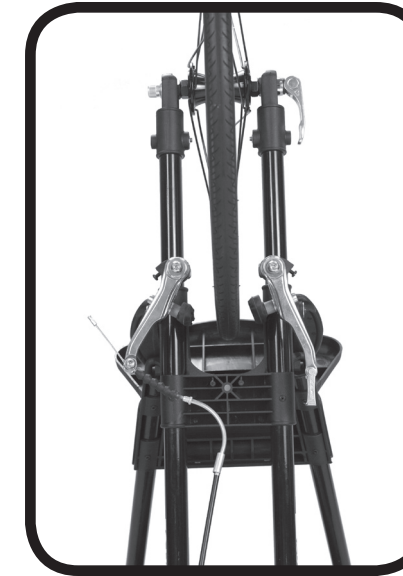
3 Using a phillips head screwdriver, attach footplate to stroller frame with screw supplied (You will find the screw in the bag with the instructions).

NOTE: You will need to rest the stroller handle on the floor in order to get to the bottom of the footplate.

Front Wheel



1 To install front wheel, lay stroller back so handle is resting on floor. Squeeze V-Brake caliper together to release noodle.



2 Insert the front wheel into the fork tips by aligning the axle flats with the fork tip flats.



3 Tighten by turning the wheel lever while holding the opposite side.



4 Squeeze V-Brake caliper together to secure brake noodle into V-Brake mechanism.

NOTE: Ensure that the brake caliper is properly installed before using stroller.

Rear Wheels



- *To install:* Gently slide the wheel's axle into the hole in the axle end until you hear it click into place.

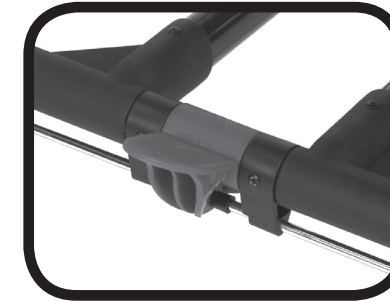
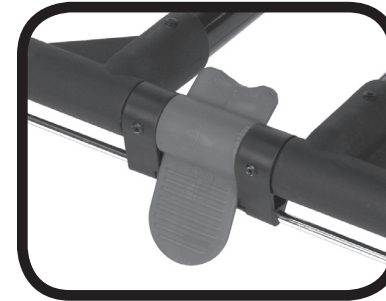


- To remove, simply press the wheel button while gently sliding the wheel away from the frame.

Parking Brake

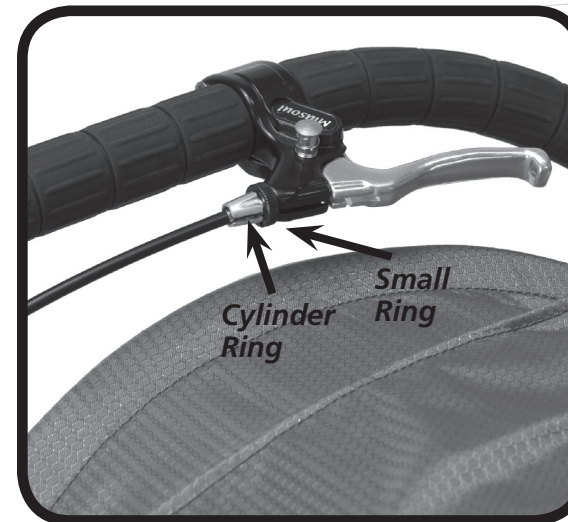


WARNING: Engage parking device before loading and unloading passenger.



- Simply push brake pedal down to engage rear parking brakes and lift up to release.

Hand Brake



Adjusting the Brake

- If you do not have good braking action, simply squeeze the brake lever five or six times. If the problem persists, turn the cylinder ring clockwise and then turn the small ring counter clockwise to tighten the cable. To lock ring, hold the cylinder ring while turning the small ring counter clockwise.

- To use the hand brake feature, simply squeeze the brake handle.

NOTE: Engage parking device during the loading and unloading of passengers.

Safety Harness



- 1** Unclip top of shoulder strap from the seat and re-clip on the pair of seat loops closest to child's shoulder height.



- 2** To adjust the strap length: Remove the shoulder pads and move the plastic guide up or down to lengthen or shorten.



- 3** To unbuckle the harness: Press one side of the center button and pull corresponding side buckle sway from the center buckle. Repeat to unbuckle other side. To buckle: Simply push side buckle into center buckle until it locks in place.



- 4** To adjust side straps: Press side buckle latch and slide strap to lengthen or shorten.



- 5** To adjust the center strap: Move its plastic guide up or down.



WARNING: Always use the crotch strap in combination with the waist belt. AVOID SERIOUS INJURY FROM FALLING OR SLIDING OUT. ALWAYS USE THE SAFETY HARNESS.

Canopy

Attaching



1 To attach bracket to frame: Unsnap seat from frame to reveal mounting location. Use a phillips head screwdriver to attach bracket screws to frame.



2 To attach canopy to bracket: Insert canopy frame into bracket and attach screws using a phillips head screwdriver.

Using



1 Secure canopy Velcro to stroller frame.



2 To use your canopy simply pull forward to the desired position.

Seat



1 Snap seat to the frame.



2 Fasten the two bottom Velcro straps. One is located near the front of seat and the other is near the footplate.



Stroller is packaged with seat support frame and can be easily removed or inserted into the seat back if additional support is desired.

NOTE: Be sure to remove the board from the back of the seat before washing.

Folding

NOTE: It is not necessary to remove the footplate to fold stroller.



1 Release the snap locks on both sides. Push thumb tab to unlock frame.



2 Unfasten safety snaps. Push handle frame back until it rests on the ground. Lower frame until it lays flat.

In Motion

Steering

- Steering your Performance Single is simple: it's balanced to turn with just a light touch on the handlebar. For tighter turns, push down on the handlebar and raise the front wheel to steer.

Wrist Strap

- Make sure wrist strap is around your wrist whenever your baby is in the stroller. The Baby Jogger is lightweight and ready to roll – with or without you – and the wrist strap helps you gain control over your stroller.

In the Dark

- Since we are concerned about the safety of you and your baby, we recommend that you not use your stroller at night. However, if you choose to, please attach reflective strips to the wheel spokes and the seat. Bicycle lights can also be mounted on the handlebar.

Maintenance

- To preserve the longevity of your stroller, it is important to perform simple, regular maintenance. It is necessary to regularly check that the air pressure in your stroller's tires is the same P.S.I. that is shown on the tires. From time to time, make sure that the joints and folding areas are still in good condition. If you hear any squeaking or feel tension, you can take your stroller to a local bike shop for added lubrication. All repairs should only be carried out by an authorized dealer.

Stroller Care

Washing

- You can machine wash your stroller's seat in cold water with a mild detergent. To minimize shrinkage, simply reattach the seat to the frame to dry. (Please do not put the seat in the dryer!)
- Be sure to remove the frame from the back of the seat before washing.
- You may clean the stroller frame using a soft, dry cloth and an occasional spray of household wax will maintain its healthy glow.



Wheel Care

- Moisture – especially from the beach – can rust your wheels and brake caliper. Spraying regularly with a silicone lubricant will keep your wheels looking healthy.
- If you frequently use your jogger, it will benefit from a yearly visit to the bike shop for wheel alignment. Refer to the PSI on the tire wall for the optimum air pressure for your tires. Please do not over-inflate.

Storing

- Sunshine can fade seat fabric and dry out tires, so storing your stroller indoors will prolong its good looks. However, if you do store it outside, using a tarp will help protect against weather wear.

WARRANTY REGISTRATION ON-LINE AT www.babyjogger.com/register

Baby Jogger's Limited Lifetime Warranty:

Baby Jogger warrants that the frame is free of manufacturer defects for the lifetime of the product. Manufacturer's defects include but are not limited to the breaking of welds and frame tube damage. Textile or soft side materials and all other components shall be warranted for one year from the date of purchase (except for tubes and tires). Proof of purchase is required to make a warranty claim and the warranty is only extended to the original purchaser.

THIS WARRANTY DOES NOT COVER:

- Normal wear and tear
- Corrosion or rust
- Incorrect assembly, or the installation of third party parts or accessories not compatible with the original design
- Accidental or intentional damage, abuse or neglect
- Commercial Use
- Improper storage/care of the unit

This warranty specifically excludes claims for indirect, incidental, or consequential damages. The implied warranties of merchantability and fitness for a particular purpose is according to the specific warranty period for this model unit at time of purchase. Some states do not allow the exclusion or limitation of incidental or consequential damages, so the above limitations or exclusions may not apply to you. This warranty gives you specific legal rights, and you may also have other rights which vary from state to state. To know what your legal rights are in your state, consult your local or state consumer affairs office or your state's Attorney General.

E-MAIL: customerservice@babyjogger.com

CALL: 1-800-241-1848 between 8am – 6pm EST, Mon. – Fri.

FAX: 1-804-262-6277

MAIL: BABY JOGGER COMPANY
8575 Magellan Parkway
Suite 1000
Richmond, VA 23227

Thank You!

We wish you many happy journeys with your new stroller! Your stroller is a great product, and we are proud to manufacture it. If you have any questions or comments, please call your nearest reseller.



H I G H P E R F O R M A N C E S T R O L L E R S

Baby Jogger is a Division of Dynamic Brands

8575 Magellan Parkway, Suite 1000 • Richmond, VA 23227
T: 800.241.1848 • F: 804.262.6277 • www.babyjogger.com