

Kwikset
SIGNATURE SERIES

TAVARIS HANDLESET

Make a modern statement with the sleek and stylish Tavaris handleset.

- Features New Advanced SmartKey Security™
- Handleset Deadbolt has ANSI/BHMA Grade 1 Certification
- Lifetime Mechanical and Finish Warranty
- Compatible with 966 UNIV interior packs for 800 and 814 series handlesets and 968 dummy interior packs for 802 series handlesets



#1 SELLING U.S. LOCK BRAND*

Numerator TruView, Unit Share Report, 2024

Specifications

Door Prep	Cross Bore 2 1/8". Edge Bore 1" Latch Face 1" x 2 1/4"
Backset	Adjustable 2 3/8" or 2 3/4"
Door Thickness	1 3/4" Standard. Thick door service part available for up to 2 1/4"
Faceplates	1" x 2 1/4" includes round corner, square corner and drive-in
Strikes	Deadbolt: 1 1/8" x 2 3/4", square, round corner & 2 1/4" full lip round corner Handle: 2 1/4" round corner full lip (Other options available)
Bolt	Deadbolt: 1" throw Handle: 1/2" throw
Cylinder	SmartKey Security™
Door Handing	Reversible for right or left-hand doors
ANSI/BHMA	Deadbolt is Grade 1 Certified
UL	N/A
ADA	N/A
Warranty	Lifetime mechanical and lifetime finish

Functions



Handleset (Single-Cylinder): Exterior only, Latch bolt operated by thumb piece outside. Deadbolt operated by key outside.
- 800 TVH SMT

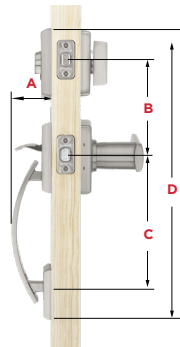


Handleset (Dummy): Exterior only, Handle acts as pull only. For inactive leaf or double doors. No Operation.
- 802 TVH



Handle Only: Handle only. Latch bolt operated by thumb piece outside.
- 814 TVH

Dimensions



Dimensions	A	B	C	D
Tavaris	2 17/32"	5 1/2"	8 13/32"	17 29/32"

Finishes



Venetian Bronze 11P



Satin Nickel 15



Matte Black 514



Polished Chrome 26

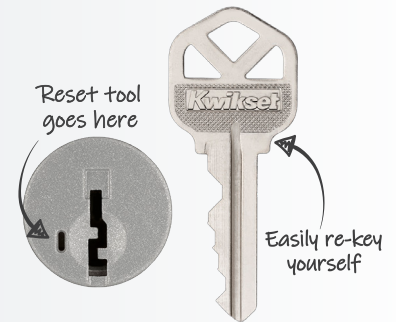


Satin Chrome 26D



One Key For All Your Locks

Protects against advanced break-in techniques and allows you to re-key your lock yourself in seconds.



LIFETIME
WARRANTY