

Kwikset
SIGNATURE SERIES



ARLINGTON HANDLESET

The detailed styling of the Arlington is a welcome enhancement to your entry doors.

- Features New Advanced SmartKey Security™
- Handleset Deadbolt has ANSI/BHMA Grade 1 Certification
- Lifetime Mechanical and Finish Warranty
- Compatible with 966 UNIV interior packs for 800 and 814 series handlesets and 968 dummy interior packs for 802 series handlesets



#1 SELLING U.S. LOCK BRAND*

Numerator TruView, Unit Share Report, 2024

Specifications

Door Prep	Cross Bore 2 1/8". Edge Bore 1" Latch Face 1" x 2 1/4"
Backset	Adjustable 2 3/8" or 2 3/4"
Door Thickness	1 3/4" Standard. Thick door service part available for up to 2 1/4"
Faceplates	1" x 2 1/4" includes round corner, square corner and drive-in
Strikes	Deadbolt: 1 1/8" x 2 3/4", square, round corner & 2 1/4" full lip round corner Handle: 2 1/4" round corner full lip (Other options available)
Bolt	Deadbolt: 1" throw Handle: 1/2" throw
Cylinder	SmartKey Security™
Door Handing	Reversible for right or left-hand doors
ANSI/BHMA	Deadbolt is Grade 1 Certified
UL	N/A
ADA	N/A
Warranty	Lifetime mechanical and lifetime finish

Functions



Handleset (Single-Cylinder): Exterior only, Latch bolt operated by thumb piece outside. Deadbolt operated by key outside.
- 800 AN SMT



Handleset (Dummy): Exterior only, Handle acts as pull only. For inactive leaf or double doors. No Operation.
- 802 AN

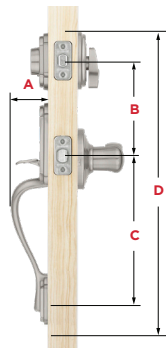


Handle with Lever: Latch bolt operated by thumb piece outside and lever inside. No Deadbolt.
- 815 AN x TNL



Handle with Knob: Latch bolt operated by thumb piece outside and knob inside. No Deadbolt.
- 815 AN x H

Dimensions

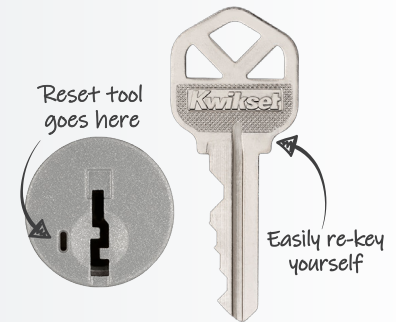


Dimensions	A	B	C	D
Arlington	2 1/2"	5 1/2"	11"	19 1/16"



One Key For All Your Locks

Protects against advanced break-in techniques and allows you to re-key your lock yourself in seconds.



Polished Brass **LO3/5**

Satin Nickel **15**

Venetian Bronze **11P**

LIFETIME
WARRANTY