

Kwikset

LIGHT COMMERCIAL



SMARTCODE 955

COMMERCIAL GRADE LEVER



Simple, Secure and Convenient Keyless Entry

- **KEYLESS ENTRY:** Makes coming and going secure and convenient.
- **3-YEAR BATTERY LIFE:** Uses 1x 9V battery (Battery included).
- **HIGH TRAFFIC DURABILITY:** Lock tested to 500,000 cycles.
- **EASY CODE MANAGEMENT:** 30 user codes and 1 one-time user code.
- **3 LOCK MODES:** Auto-Lock, Passage and Disable Turnpiece (Auto-Lock).

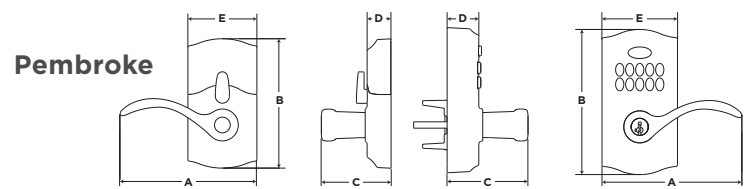
#1 SELLING U.S. LOCK BRAND*

*Source: Numerator TruView, Unit Share Report, 2024

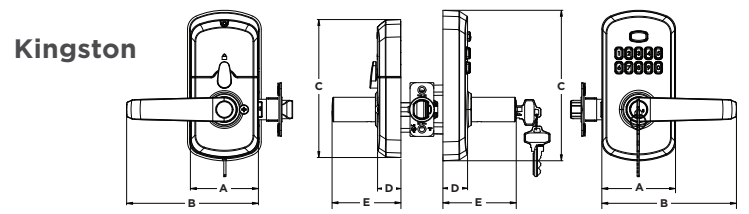
Specifications

Function	Keyed entry electronic lever
Door Prep	2 1/8" diameter face hole & 1" diameter latch hole
Backset	Adjustable 2 3/8" or 2 3/4"
Door Thickness	1 3/8" - 1 3/4"
Faceplates	1" x 2 1/4" round corner standard
Strikes	Round corner, 4 hole strike, 2 3/4" x 1 1/8"
Latch	Round corner adjustable 2 3/8" x 2 3/4"
Bolt	1" throw, dead latch
Door Handing	Reversible for right or left-hand doors
Cylinder	SmartKey Security™ KW1 cylinder
ADA	Certified
UL Rated	20 min UL fire rating

Dimensions



PML Design	A	B	C	D	E
Interior	5 5/8" (142.9 mm)	5 5/16" (134.9 mm)	2 7/8" (73 mm)	31/32" (24.6 mm)	2 27/32" (72.2 mm)
Exterior	5 3/4" (146 mm)	5 31/32" (151.6 mm)	3 5/16" (84.1 mm)	1 13/32" (35.7 mm)	3 3/32" (78.6 mm)



KNL Design	A	B	C	D	E
Interior	5 1/2" (139.7 mm)	5 3/4" (146 mm)	2 7/8" (73 mm)	31/32" (24.6 mm)	2 27/32" (72.2 mm)
Exterior	5 5/8" (142.9 mm)	6 9/32" (159.5 mm)	3 1/16" (77.7 mm)	1 1/32" (26.2 mm)	3 1/16" (77.7 mm)

Features

- **Certified Advanced Security:** Grade 2 BHMA Certified, up to 2.5x stronger than Grade 3.
- **Intrusion Alert:** 3 wrong codes disable keypad and sound alarm.
- **Easy Low Light Code Entry:** Bright LED light-up keypad.
- **Featuring SmartKey Security:** Re-key the lock yourself in seconds.
- **Easy Install And Bilt App:** Installs with just a screwdriver. BILT 3D interactive instructions provide voice, text and animation guidance for an easy installation.

FINISH AND
LIFETIME WARRANTY*
MECHANICAL

THREE YEAR
ELECTRONIC WARRANTY*

*See kwikset.com/support/warranty for the lifetime limited mechanical and finish warranties and three-year limited electronics warranty.

*Consulte kwikset.com/support/warranty para ver las garantías mecánicas y de acabado limitadas de por vida y la garantía limitada de tres años de los electrónicos.

Finishes



Satin Nickel 15



Satin Chrome 26D



Matte Black 514



Venetian Bronze 11P



Satin Nickel 15



Satin Chrome 26D



Matte Black 514

Kwikset

19701 DaVinci, Lake Forest, CA 92610 • Kwikset.com • 1-800-327-LOCK
Copyright © 2024, ASSA ABLOY Americas Residential Inc. All rights reserved. Lake Forest, CA 92610 • 1891473_1024