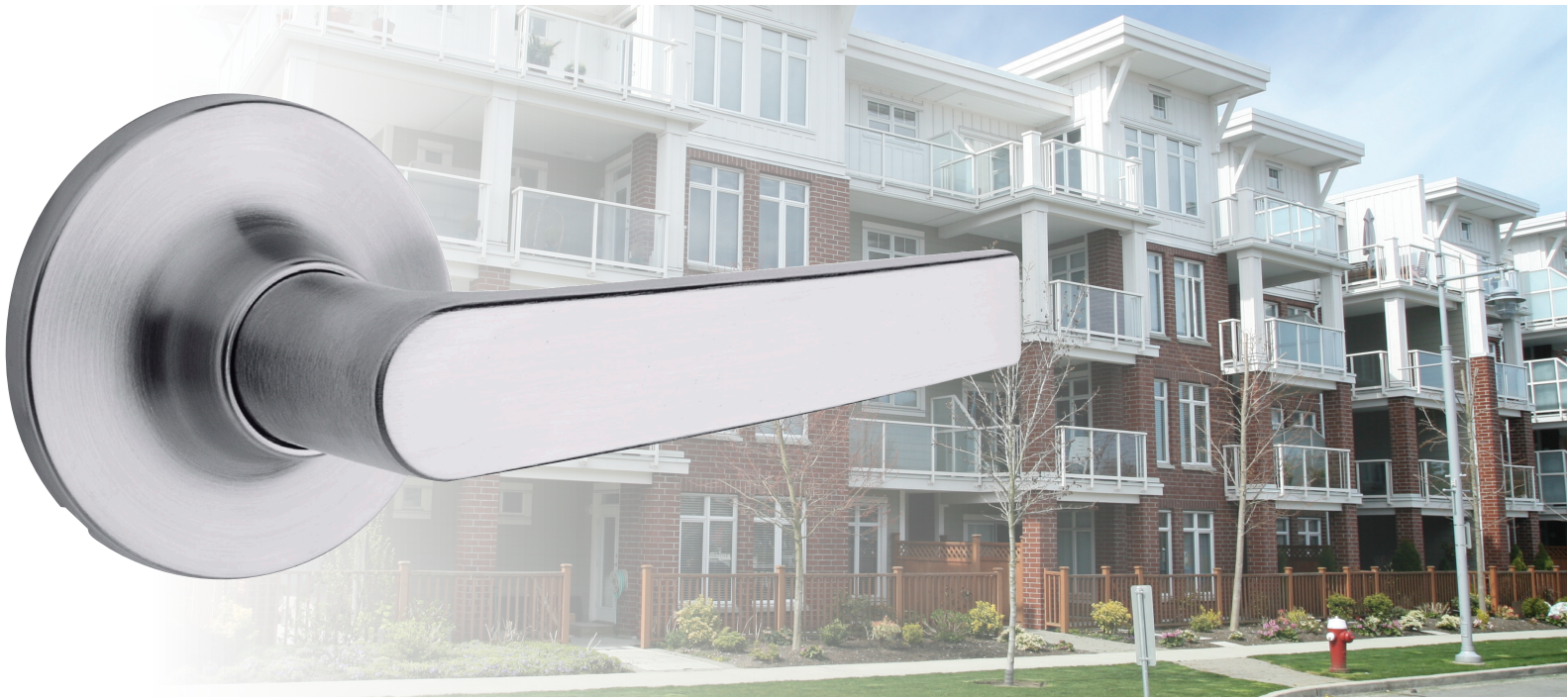


SAFE LOCK

by **Kwikset**



Price Guide

TABLE OF CONTENTS

Knobs	2
Levers	2-4
Deadbolts	5
Service Parts	6-7
Specifications	8-10
Backset	11
Keying Charges	11
Ordering Information	12
Weights & Measurements	13
General Information	14-15
Notes	16-17



Regina Knob

MFG Pro #	Item Description	Function	3	L03	5	11P	15	26	26D	514	List Price	QTY
9SK10000-038	SK1000RG 15 4AL RCS	Passage					•				\$23.70	30
9SK10000-057	SK1000RG 26D 4AL RCS	Passage							•		\$21.20	30
9SK10000-055	SK1000RG 514 4AL RCS	Passage								•	\$25.90	30
9SK30000-038	SK3000RG 15 4AL RCS V1	Privacy					•				\$25.20	30
9SK30000-056	SK3000RG 26D 4AL RCS	Privacy							•		\$22.80	30
9SK30000-055	SK3000RG 514 4AL RCS	Privacy								•	\$27.70	30
9SK50000-067	SK5000RG 15 KW 4AL RCS K3	Entry					•				\$26.70	30
9SK50000-068	SK5000RG 26D KW 4AL RCS K3	Entry							•		\$24.30	30
9SK50000-069	SK5000RG 514 KW 4AL RCS K3	Entry								•	\$29.20	30
9SK70000-022	SK7000RG 15 V1	Dummy					•				\$10.50	20
9SK70000-024	SK7000RG 26D V1	Dummy							•		\$9.50	20
9SK70000-026	SK7000RG 514	Dummy								•	\$11.60	20



Athens Knob

MFG Pro #	Item Description	Function	3	L03	5	11P	15	26	26D	514	List Price	QTY
9SK10000-031	SK1000AS 15 4AL RCS	Passage					•				\$25.20	30
9SK30000-031	SK3000AS 15 4AL RCS	Privacy					•				\$25.90	30
9SK50000-066	SK5000AS 15 KW 4AL RCS K3	Entry					•				\$28.30	30
9SK70000-018	SK7000AS 15 V1	Dummy					•				\$11.60	20



Winston RDT Lever

MFG Pro #	Item Description	Function	3	L03	5	11P	15	26	26D	514	List Price	QTY
9SL10000-056	SL1000WI 15 4AL RCS	Passage					•				\$36.00	20
9SL10000-059	SL1000WI 26D 4AL RCS	Passage							•		\$30.80	20
9SL10000-111	SL1000WI 514 4AL RCS	Passage								•	\$39.30	20
9SL10000-155	SL1000WI 15 4AL SCS	Passage					•				\$36.00	20
9SL10000-156	SL1000WI 514 4AL SCS	Passage								•	\$39.30	20
9SL10020-001	SL1002WI 15 RCAL UL RCS	Passage UL					•				\$41.50	20
9SL10020-006	SL1002WI 26D RCAL UL RCS	Passage UL							•		\$36.70	20
9SL10020-007	SL1002WI 514 RCAL UL RCS	Passage UL								•	\$45.80	20
9SL10020-018	SL1002WI 15 SCAL UL SCS	Passage UL					•				\$41.50	20
9SL10020-024	SL1002WI 514 SCAL UL SCS	Passage UL								•	\$45.80	20
9SL40000-014	SL4000WI 15 4AL RCS	Privacy					•				\$43.40	20
9SL40000-016	SL4000WI 26D 4AL RCS	Privacy							•		\$38.30	20
9SL40000-017	SL4000WI 514 4AL RCS	Privacy								•	\$46.10	20
9SL60000-028	SL6000WI 15 KW 4AL RCS K4	Entry					•				\$43.50	20
9SL60000-029	SL6000WI 26D KW 4AL RCS K4	Entry							•		\$39.00	20
9SL60000-030	SL6000WI 514 KW 4AL RCS K4	Entry								•	\$46.00	20
9SL70000-064	SL7000WI 514	Dummy								•	\$21.60	20
9SL70000-043	SL7000WI 15 V1	Dummy					•				\$19.80	20
9SL70000-044	SL7000WI 26D V1	Dummy							•		\$15.00	20



Winston SQT Lever

MFG Pro #	Item Description	Function	3	L03	5	11P	15	26	26D	514	List Price	QTY
9SL10000-108	SL1000WI SQT 15 4AL RCS	Passage					•				\$36.00	12
9SL10000-110	SL1000WI SQT 26 4AL RCS	Passage						•			\$36.00	12
9SL10000-109	SL1000WI SQT 514 4AL RCS	Passage								•	\$39.30	12
9SL10020-008	SL1002WI SQT 15 RCAL UL RCS	Passage UL					•				\$41.50	12
9SL10020-010	SL1002WI SQT 26 RCAL UL RCS	Passage UL						•			\$41.50	12
9SL10020-009	SL1002WI SQT 514 RCAL UL RCS	Passage UL								•	\$45.80	12
9SL40000-011	SL4000WI SQT 15 4AL RCS	Privacy					•				\$43.40	12
9SL40000-013	SL4000WI SQT 26 4AL RCS	Privacy						•			\$43.40	12
9SL40000-012	SL4000WI SQT 514 4AL RCS	Privacy								•	\$46.10	12
9SL60000-031	SL6000WI SQT 15 KW 4AL RCS K3	Entry					•				\$43.50	12
9SL60000-032	SL6000WI SQT 26 KW 4AL RCS K3	Entry						•			\$43.50	12
9SL60000-033	SL6000WI SQT 514 KW 4AL RCS K3	Entry								•	\$46.00	12
9SL70000-061	SL7000WI SQT 15	Dummy					•				\$19.80	20
9SL70000-063	SL7000WI SQT 26	Dummy						•			\$19.80	20
9SL70000-062	SL7000WI SQT 514	Dummy								•	\$21.60	20



Grapevine Lever

MFG Pro #	Item Description	Function	3	L03	5	11P	15	26	26D	514	List Price	QTY
9SL10000-050	SL1000GV 15 4AL RCS	Passage					•				\$35.60	20
9SL10000-122	SL1000GV 514 4AL RCS	Passage								•	\$39.20	20
9SL30000-050	SL3000GV 15 4AL RCS V1	Privacy					•				\$37.40	20
9SL30000-096	SL3000GV 514 4AL RCS	Privacy								•	\$41.00	20
9SL50000-120	SL5000GV 15 KW 4AL RCS K4	Entry					•				\$37.50	20
9SL50000-121	SL5000GV 514 KW 4AL RCS K4	Entry								•	\$41.00	20
9SL70000-039	SL7000GV 15 V1	Dummy					•				\$18.50	20
9SL70000-077	SL7000GV 514	Dummy								•	\$20.30	20



Layton Lever

MFG Pro #	Item Description	Function	3	L03	5	11P	15	26	26D	514	List Price	QTY
9SL10000-043	SL1000LY 15 4AL RCS	Passage					•				\$37.80	20
9SL10000-126	SL1000LY 26D 4AL RCS	Passage							•		\$35.10	20
9SL10000-121	SL1000LY 514 4AL RCS	Passage								•	\$41.20	20
9SL30000-043	SL3000LY 15 4AL RCS	Privacy					•				\$39.50	20
9SL30000-097	SL3000LY 26D 4AL RCS	Privacy							•		\$36.70	20
9SL30000-095	SL3000LY 514 4AL RCS	Privacy								•	\$43.20	20
9SL50000-122	SL5000LY 15 KW 4AL RCS K4	Entry					•				\$39.40	20
9SL50000-123	SL5000LY 26D KW 4AL RCS K4	Entry							•		\$37.40	20
9SL50000-124	SL5000LY 514 KW 4AL RCS K4	Entry								•	\$43.30	20
9SL70000-033	SL7000LY LH 15	Dummy					•				\$20.90	20
9SL70000-037	SL7000LY LH 26D	Dummy							•		\$19.60	20
9SL70000-075	SL7000LY LH 514	Dummy								•	\$22.70	20
9SL70000-034	SL7000LY RH 15	Dummy					•				\$20.90	20
9SL70000-038	SL7000LY RH 26D	Dummy							•		\$19.60	20
9SL70000-076	SL7000LY RH 514	Dummy								•	\$22.70	20



Daylon SQT Lever

MFG Pro #	Item Description	Function	3	L03	5	11P	15	26	26D	514	List Price	QTY
9SL10000-090	SL1000DAL SQT 15 4AL RCS	Passage					•				\$37.80	12
9SL10000-129	SL1000DAL SQT 26 4AL RCS	Passage						•			\$37.80	12
9SL10000-125	SL1000DAL SQT 26D 4AL RCS	Passage							•		\$37.80	12
9SL10000-093	SL1000DAL SQT 514 4AL RCS	Passage								•	\$41.20	12
9SL10000-153	SL1000DAL SQT 15 4AL SCS	Passage					•				\$37.80	12
9SL10000-154	SL1000DAL SQT 514 4AL SCS	Passage								•	\$41.20	12
9SL10020-003	SL1002DAL SQT 15 RCAL UL RCS	Passage UL					•				\$43.80	12
9SL10020-011	SL1002DAL SQT 26 RCAL UL RCS	Passage UL						•			\$43.80	12
9SL10020-012	SL1002DAL SQT 26D RCAL UL RCS	Passage UL							•		\$43.80	12
9SL10020-002	SL1002DAL SQT 514 RCAL UL RCS	Passage UL								•	\$48.00	12
9SL10020-015	SL1002DAL SQT 15 SCAL UL SCS	Passage UL					•				\$43.80	12
9SL10020-020	SL1002DAL SQT 514 SCAL UL SCS	Passage UL								•	\$48.00	12
9SL40000-004	SL4000DAL SQT 15 4AL RCS	Privacy					•				\$45.70	12
9SL40000-022	SL4000DAL SQT 26 4AL RCS	Privacy						•			\$45.70	12
9SL40000-023	SL4000DAL SQT 26D 4AL RCSV	Privacy							•		\$45.70	12
9SL40000-007	SL4000DAL SQT 514 4AL RCS	Privacy								•	\$48.60	12
9SL60000-021	SL6000DAL SQT 15 KW 4AL RCS K3	Entry					•				\$45.70	12
9SL60000-022	SL6000DAL SQT 26 KW 4AL RCS K3	Entry						•			\$45.70	12
9SL60000-023	SL6000DAL SQT 26D KW 4AL RCS K3	Entry							•		\$45.70	12
9SL60000-024	SL6000DAL SQT 514 KW 4AL RCS K3	Entry								•	\$48.30	12
9SL70000-052	SL7000DAL SQT 15	Dummy					•				\$20.90	20
9SL70000-053	SL7000DAL SQT 26	Dummy						•			\$20.90	20
9SL70000-054	SL7000DAL SQT 26D	Dummy							•		\$20.90	20
9SL70000-056	SL7000DAL SQT 514	Dummy								•	\$22.70	20
9SL65000-001	SL6500DAL SQT 15 4AL RCS K3	Storeroom					•				\$49.20	12
9SL65000-003	SL6500DAL SQT 26 4AL RCS K3	Storeroom						•			\$49.20	12
9SL65000-004	SL6500DAL SQT 26D 4AL RCS K3	Storeroom							•		\$49.20	12
9SL65000-002	SL6500DAL SQT 514 4AL RCS K3	Storeroom								•	\$51.80	12



Daylon RDT Lever

MFG Pro #	Item Description	Function	3	L03	5	11P	15	26	26D	514	List Price	QTY
9SL10000-094	SL1000DAL RDT 15 4AL RCS	Passage					•				\$37.80	12
9SL10000-102	SL1000DAL RDT 26 4AL RCS	Passage						•			\$37.80	12
9SL10000-124	SL1000DAL RDT 26D 4AL RCS	Passage							•		\$37.80	12
9SL10000-095	SL1000DAL RDT 514 4AL RCS	Passage								•	\$41.20	12
9SL10000-151	SL1000DAL RDT 15 4AL SCS	Passage					•				\$37.80	12
9SL10000-152	SL1000DAL RDT 514 4AL SCS	Passage								•	\$41.20	12
9SL10020-005	SL1002DAL RDT 15 RCAL UL RCS	Passage UL					•				\$43.80	12
9SL10020-013	SL1002DAL RDT 26 RCAL UL RCS	Passage UL						•			\$43.80	12
9SL10020-014	SL1002DAL RDT 26D RCAL UL RCS	Passage UL							•		\$43.80	12
9SL10020-004	SL1002DAL RDT 514 RCAL UL RCS	Passage UL								•	\$48.00	12
9SL10020-022	SL1002DAL RDT 15 SCAL UL SCS	Passage UL					•				\$43.80	12
9SL10020-023	SL1002DAL RDT 514 SCAL UL SCS	Passage UL								•	\$48.00	12
9SL40000-008	SL4000DAL RDT 15 4AL RCS	Privacy					•				\$45.70	12

9SL40000-010	SL4000DAL RDT 26 4AL RCS	Privacy							•				\$45.70	12
9SL40000-021	SL4000DAL RDT 26D 4AL RCS	Privacy								•			\$45.70	12
9SL40000-009	SL4000DAL RDT 514 4AL RCS	Privacy									•		\$48.60	12
9SL60000-009	SL6000DAL RDT 15 KW 4AL RCS K3	Entry							•				\$45.70	12
9SL60000-019	SL6000DAL RDT 26 KW 4AL RCS K3	Entry								•			\$45.70	12
9SL60000-020	SL6000DAL RDT 26D KW 4AL RCS K3	Entry									•		\$45.70	12
9SL60000-010	SL6000DAL RDT 514 KW 4AL RCS K3	Entry										•	\$48.30	12
9SL70000-057	SL7000DAL RDT 15	Dummy							•				\$20.90	20
9SL70000-058	SL7000DAL RDT 26	Dummy								•			\$20.90	20
9SL70000-078	SL7000DAL RDT 26D	Dummy									•		\$20.90	20
9SL70000-059	SL7000DAL RDT 514	Dummy										•	\$22.70	20
9SL65000-005	SL6500DAL RDT 15 4AL RCS K3	Storeroom							•				\$49.20	12
9SL65000-007	SL6500DAL RDT 26 4AL RCS K3	Storeroom								•			\$49.20	12
9SL65000-008	SL6500DAL RDT 26D 4AL RCS K3	Storeroom									•		\$49.20	12
9SL65000-006	SL6500DAL RDT 514 4AL RCS K3	Storeroom										•	\$51.80	12

Reminy Lever



MFG Pro #	Item Description	Function	3	L03	5	11P	15	26	26D	514	List Price	QTY
9SL10000-116	SL1000REL RDT 15 4AL RCS	Passage					•				\$37.80	12
9SL10000-118	SL1000REL RDT 26 4AL RCS	Passage						•			\$37.80	12
9SL10000-117	SL1000REL RDT 514 4AL RCS	Passage								•	\$41.20	12
9SL10020-025	SL1002REL RDT 15 RCAL UL RCS	Passage UL					•				\$43.80	12
9SL10020-026	SL1002REL RDT 514 RCAL UL RCS	Passage UL								•	\$48.00	12
9SL10020-027	SL1002REL RDT 15 SCAL UL SCS	Passage UL					•				\$43.80	12
9SL10020-028	SL1002REL RDT 514 SCAL UL SCS	Passage UL								•	\$48.00	12
9SL40000-018	SL4000REL RDT 15 4AL RCS	Privacy					•				\$45.70	12
9SL40000-020	SL4000REL RDT 26 4AL RCS	Privacy						•			\$45.70	12
9SL40000-019	SL4000REL RDT 514 4AL RCS	Privacy								•	\$48.60	12
9SL60000-025	SL6000REL RDT 15 KW 4AL RCS K3	Entry					•				\$45.70	12
9SL60000-026	SL6000REL RDT 26 KW 4AL RCS K3	Entry						•			\$45.70	12
9SL60000-027	SL6000REL RDT 514 KW 4AL RCS K3	Entry								•	\$48.30	12
9SL70000-070	SL7000REL RDT 15	Dummy					•				\$20.90	20
9SL70000-072	SL7000REL RDT 26	Dummy						•			\$20.90	20
9SL70000-071	SL7000REL RDT 514	Dummy								•	\$22.70	20

SD9000 Series Deadbolt



MFG Pro #	Item Description	Function	3	L03	5	11P	15	26	26D	514	List Price	QTY
9SD91000-043	SD9100 15 KW 4AL RCS K3	Single Cyl					•				\$27.20	12
9SD91000-045	SD9100 514 KW 4AL RCS K3	Single Cyl								•	\$29.70	12
9SD91000-044	SD9100 26D KW 4AL RCS K3	Single Cyl							•		\$24.50	12
9SD91020-001	SD9102 15 KW RCAL UL RCS K3	Single Cyl UL					•				\$34.90	12
9SD91020-002	SD9102 26D KW RCAL UL RCS K3	Single Cyl UL							•		\$32.40	12
9SD91020-003	SD9102 514 KW RCAL UL RCS K3	Single Cyl UL								•	\$38.30	12
9SD92000-007	SD9200 15 KW 4AL RCS K3	Double Cyl					•				\$30.20	12
9SD92000-008	SD9200 26D KW 4AL RCS K3	Double Cyl							•		\$27.90	12
9SD92000-011	SD9200 514 KW 4AL RCS K3	Double Cyl								•	\$32.90	12
9SD93000-005	SD9300 15 4AL RCS K3	One-Sided					•				\$16.00	12
9SD93000-006	SD9300 26D 4AL RCS K3	One-Sided							•		\$14.70	12
9SD93000-009	SD9300 514 4AL RCS	One-Sided								•	\$17.40	12

Knobs	EA. QTY	SKU No.	15	514	26	26D	BLK	SLVR	NO FINISH	SK1000	SK3000	SK5000	SK7000	LIST PRICE
										AS, RG	AS, RG	AS, RG	AS, RG	
KEYS														
5-Pin Key Blank 50CT	1	810000							-462			•		\$145.90
5-Pin, Random Cut (1 key ring with 2 cut keys KA)	1	810000							-434			•		\$11.90
5 Pin, PK, Specific Config	1	810009							-003			•		\$5.80
5 Pin, PK, Any Cut	1	810009							-004			•		\$5.80
5 Pin, Master Key, Specific Config	1	810009							-001			•		\$5.80
5 Pin, Master Key, Any Cut	1	810009							-002			•		\$5.80
CYLINDERS														
Single Cylinder Plug for Athens	1	810000					-428	-429				•		\$23.40
Single Cylinder Plug for Regina	1	810000					-430	-431				•		\$23.40
STRIKES														
Knob/Lever Round Corner Full Lip Strike	1	83796	-022	-019	-011	-011				•	•	•		\$15.90
Knob/Lever Square Corner Full Lip Strike	1	83437	-045	-040	-036	-036				•	•	•		\$15.90
LATCHES														
6AL Plain Latch	1	810000	-436	-437	-435					•	•			\$17.30
6AL Dead Latch	1	810000	-439	-440	-438							•		\$17.30
Round Corner Adjustable Plain Latch, UL	1	810000	-451	-453	-452					•				\$17.30
Square Corner Adjustable Plain Latch, UL	1	810000	-454	-456	-455					•				\$17.30
SCREWS														
Screw Packs for Passage/Privacy/Entry	1	810000	-457	-458	-457	-457				•	•		•	\$13.00
Screw Packs for Dummy	1	810000	-460	-459	-460	-460						•		\$13.00

AS Athens	GV Grapevine	RG Regina
------------------	---------------------	------------------

											SL1000	SL3000	SL4000	SL5000	SL6000	SL7000				
Levers	EA. QTY	SKU No.	15	514	26	26D	BLK	SLVR	NO FIN-ISH	DAL, WI, LY, GV, REL	WI, LY, GV	DAL, WI, REL	WI, LY, GV	DAL, WI, REL	DAL, WI, LY, GV, REL	LIST PRICE				
KEYS																				
5-Pin Key Blank 50CT	1	810000							-462				•	•		\$145.90				
5 PIN, Random Cut (1 key ring with 2 cut keys KA)	1	810000							-434				•	•		\$11.90				
5 Pin, PK, Specific Config	1	810009							-003				•	•		\$5.80				
5 Pin, PK, Any Cut	1	810009							-004				•	•		\$5.80				
5 Pin, Master Key, Specific Config	1	810009							-001				•	•		\$5.80				
5 Pin, Master Key, Any Cut	1	810009							-002				•	•		\$5.80				
CYLINDERS																				
Single Cylinder Plug for Levers	1	810000							-461				•	•		\$23.40				
STRIKES																				
Knob/Lever Round Corner Full Lip Strike	1	83796	-022	-019	-011	-011				•	•	•	•	•		\$15.90				
Knob/Lever Square Corner Full Lip Strike	1	83437	-045	-040	-036	-036				•	•	•	•	•		\$15.90				
LATCHES																				
6AL Plain Latch	1	810000	-436	-437	-435	-435				•	•	•				\$17.30				
6AL Dead Latch	1	810000	-439	-440	-438	-438							•	•		\$17.30				
Round Corner Adjustable Latch, UL	1	810000	-451	-453	-452	-452				•						\$17.30				
Square Corner Adjustable Latch, UL	1	810000	-454	-456	-455	-455				•						\$17.30				
SCREWS																				
Screw Packs for Lever/Knob Passage/Privacy/Entry	1	810000	-457	-458	-457	-457				•	•	•	•			\$13.00				
Screw Packs for Dummy Function	1	810000	-460	-459	-460	-460								•	•	\$13.00				
<table border="0" style="width: 100%;"> <tr> <td>DAL Daylon</td> <td>LY Layton</td> <td>REL Reminy</td> <td>WI Winston</td> </tr> </table>																	DAL Daylon	LY Layton	REL Reminy	WI Winston
DAL Daylon	LY Layton	REL Reminy	WI Winston																	

Deadbolts	EA. QTY	SKU No.	15	514	26	26D	BLK	SLVR	NO FINISH	SD9100	SD9200	SD9300	LIST PRICE
KEYS													
5-Pin Key Blank 50CT	1	810000							-462	•	•		\$145.90
5 PIN, Random Cut (1 key ring with 2 cut keys KA)	1	810000							-434	•	•		\$11.90
5 Pin, PK, Specific Config	1	810009							-003	•	•		\$5.80
5 Pin, PK, Any Cut	1	810009							-004	•	•		\$5.80
5 Pin, Master Key, Specific Config	1	810009							-001	•	•		\$5.80
5 Pin, Master Key, Any Cut	1	810009							-002	•	•		\$5.80
CYLINDERS													
Single Cylinder Plug for Deadbolts	1	810000						-432	-433	•			\$23.40
LATCHES													
Round Corner Adjustable Latch	1	810000	-382							•	•	•	\$17.30
Square Corner Adjustable Latch	1	810000	-387							•	•	•	\$17.30
Drive-In Adjustable Latch	1	810000							-394	•	•	•	\$17.30
Round Corner Adjustable Latch, UL	1	810000	-442	-444	-443	-443				•			\$17.30
Square Corner Adjustable Latch, UL	1	810000	-445	-447	-446	-446				•			\$17.30
SCREWS													
Screw Packs for Deadbolts	1	810000	-411	-412	-411	-411				•	•	•	\$13.00

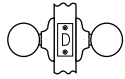
Knobs			
Door Prep	Cross Bore 2-1/8", Edge Bore 1" Latch Face 1" x 2-1/4"	Strikes	2-1/4" round corner full lip. Square corner strike available as a service part
Backset	Adjustable 2-3/8" or 2-3/4"	Bolt	1/2" Throw
Door Thickness	1-3/8" - 1-3/4" doors standard No thick door option	Door Handing	Non-handed
Cylinder	KW 5 pin	ANSI/BHMA	A156.2 Grade 3
Faceplates	1" x 2-1/4" round corner with drive-in collar. Optional square corner available as service part	ADA	N/A
		UL	None

Levers			
Door Prep	Cross Bore 2-1/8", Edge Bore 1" Latch Face 1" x 2-1/4"	Strikes	2-1/4" round corner full lip. Square corner strike available as a service part
Backset	Adjustable 2-3/8" or 2-3/4" UL 2-3/4" standard 2-3/8" option	Bolt	1/2" Throw
Door Thickness	1-3/8" - 1-3/4" doors standard. No thick door option	ANSI/BHMA	A156.2 Grade 3
Cylinder	KW 5 pin	ADA	4000 and 6000 functions satisfy section 4.13.9 ADA requirements
Faceplates	1" x 2-1/4" round corner with drive-in collar. Optional square corner available as service part	UL	Daylon and Winston meets UL 3-hour fire rating for SL1002 function

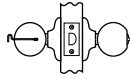
Deadbolts			
Door Prep	Single & Double Cylinder: Cross Bore 2-1/8", Edge Bore 1" Latch Face 1" x 2-1/4" One Sided Deadbolt: Half Cross Bore 1-5/8", Edge Bore 1" Latch Face 1" x 2-1/4"	Strikes	2-1/4" round corner full lip. Square corner strike available as a service part
Backset	Adjustable 2-3/8" or 2-3/4"	Bolt	1" Throw
Door Thickness	1-3/8" - 1-3/4" doors standard. No thick door option	Door Handing	Non-handed
Cylinder	KW 5 pin	ANSI/BHMA	A156.2 Grade 3
Faceplates	1" x 2-1/4" round corner with drive-in collar. Optional square corner available as service part	ADA	Interior turn piece meets 4.13.9 ADA requirements
		UL	Function SD9102 meets UL 3-hour fire rating

Regina & Athens Knobs

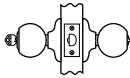
Functions



Passage/Hall/Closet: Both knobs & levers always free.
1000 - F75



Privacy/Bed/Bath: Both knobs locked or unlocked by turnbutton inside. Outside knob unlocked by emergency key.
3000 - F76



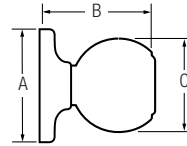
Entry: Both knobs locked or unlocked by key outside or turnbutton inside.
5000 - F82



Half Dummy Trim, Surface Mounted: For doors where only a pull is required. No operation.
7000 - Int.

Note: Description (ANSI/BHMA functions are listed in italics)

Dimensions



Design	A	B	C
Athens™	2-9/16"	2-3/8"	2"
Regina™	2-9/16"	2-7/8"	1-3/4"

Winston, Grapevine, Daylon, Layton, & Reminy Levers

Functions



Passage/Hall/Closet: Both levers always free.
1000/1002UL - F75



Privacy/Bed/Bath: Both levers locked or unlocked by turnbutton or push button inside. Outside lever unlocked by emergency key.
3000/4000 - F76



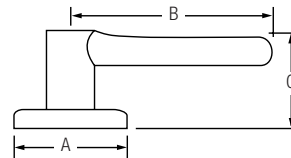
Keyed Entry Lever: Both sides locked or unlocked by key outside or turnbutton or push button inside.
5000/6000 - F82



Half Dummy Trim, Surface Mounted: For doors where only a pull is required. No operation.
7000 - Int.

Note: Description (ANSI/BHMA functions are listed in italics)

Dimensions



Design	A	B	C	C (keyed)
Winston™	2-9/16"	3-5/8"	2-3/8"	2-3/8"
Grapevine™	2-9/16"	3-3/4"	2-1/2"	2-1/2"
Layton™	2-9/16"	3-5/8"	2-3/8"	2-3/8"
Daylon™	2-9/16"	3-5/8"	2-3/8"	2-3/8"
Reminy™	2-9/16"	3-5/16"	37/64"	4-7/32"

Deadbolts

Functions



Single Cylinder: Deadbolt operated by key outside and thumbturn inside.
9100/9102UL - *E0153*



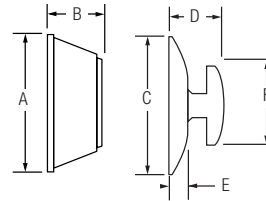
Double Cylinder: Deadbolt operated by key both sides.
9200 - *E0143*



One Sided: Deadbolt operated by thumbturn one side. No trim on other side. Half bore door prep.
9300 - *E0193*

Note: Description (ANSI/BHMA functions are listed in italics)

Dimensions



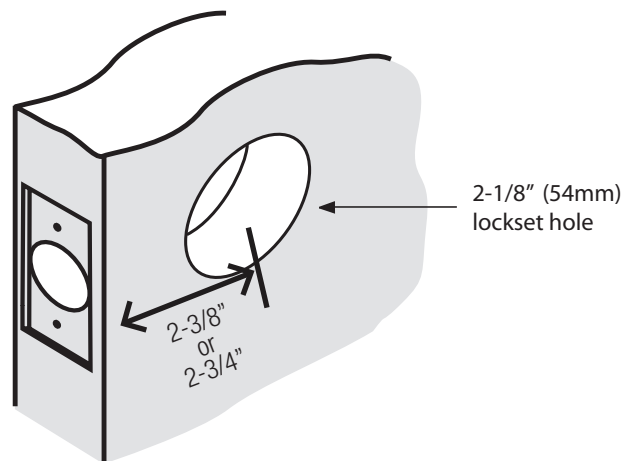
Design	A	B	C	D	E	F
Single Cylinder	2-1/2"	1-1/8"	2-9/16"	3/4"	1/4"	2-1/8"
Double Cylinder	2-1/2"	1-1/8"	2-9/16"	1"		
One Sided			2-9/16"	3/4"	1/4"	2-1/8"

Specialty Keying Charges

Code	Description	List Price Adder
KA	Keyed Alike	\$10.00
MK	Master Keying	\$15.00
GMK	Grand Master Keying	\$20.00
PK	Builder Keying (Protecto)	\$15.00
PMK	Protecto Master Keying	\$20.00

Backset

Backset is the distance from center edge of door to center of the 2-1/8" (54mm) diameter hole, 2-3/8" or 2-3/4" in most cases.



Order Sequence: Function + Style + Finish + Keyway + Keying + Latch + Strike. See examples below

Step 1: US Function

Model #	Non UL Products
SK1000	Knob Passage
SK3000	Knob Privacy
SK5000	Knob Entry
SK7000	Knob Dummy
SL1000	Lever Passage
SL3000	Lever Privacy
SL4000	Lever Privacy
SL5000	Lever Entry
SL6000	Lever Entry
SL7000	Lever Dummy
SD9100	Deadbolt Single
SD9200	Deadbolt Double
SD9300	Deadbolt One Sided
Model #	UL Products
SL1002	Lever Passage
SD9102	Deadbolt Single

Step 2: Style

Style Symbol	Style Name
Knobs	
RG	Regina
AS	Athens
Lever	
WI	Winston
GV	Grapevine
LY	Layton
DAL	Daylon
REL	Reminy
Deadbolt	
SD	

Step 3: Finishes

Finish #	Finish Name
15	Satin Nickel
26	Polished Chrome
26D	Satin Chrome
514	Matte Black

Step 4: Keying

Kwikset	
Key Code	Description
K3,K4	Keyed Alike
MK	Master Keyed
PK	Builder Key
GMK	Grand Master Key
PMK	Builder Master Keyed

Step 5: Latch

Latch Code	Latch Style
4AL	Round Corner Adjustable Latch with drive-in collar

Step 6: Strike

Strike Code	Strike Style
RCS	Round Corner Strike

Example 1: Kwikset keyway; master keyed

Order Entry: 4 SL 5000 GV 15 KW MK 4AL RCS
 (MK key cut = 56747) Order Description: 4 Safe Lock Grapevine levers, satin nickel, entry function with Kwikset keyway, master keyed and cut 56747, 4AL and round corner strike

WEIGHTS & MEASUREMENTS



June 2026

Box Pack						Master Case				
Knobs	Quantity	Length (in.)	Width (in.)	Height (In.)	Wt.(lbs.)	Quantity	Length	Width (in.)	Height (In.)	Wt.(lbs.)
Passage	1	7.2	3.39	2.95	1.17	30	17.72	14.96	10.43	35.71
Privacy	1	7.2	3.39	2.95	0.98	30	17.72	14.96	10.43	31.22
Entry	1	7.2	3.39	2.95	0.98	30	17.72	14.96	10.43	31.22
Dummy	1	2.90	2.80	2.80	0.30	20	14.9	6.30	6.40	6.15

Levers*	Quantity	Length (in.)	Width (in.)	Height (In.)	Wt.(lbs.)	Quantity	Length	Width (in.)	Height (In.)	Wt.(lbs.)
Passage	1	6.65	5.74	2.67	1.56	20	14.50	11.00	16.50	32.00
Privacy	1	7.72	6.18	3.54	1.80	20	14.50	11.00	16.50	32.00
Entry	1	7.72	6.18	3.54	1.80	20	14.50	11.00	16.50	32.00
Dummy	1	5.50	3.13	3.00	0.58	20	14.50	12.00	7.00	12.70

*Case Quantities and Dimensions vary by SKU

Deadbolts	Quantity	Length (in.)	Width (in.)	Height (In.)	Wt.(lbs.)	Quantity	Length	Width (in.)	Height (In.)	Wt.(lbs.)
Single Cylinder	1	3.88	3.44	2.56	0.88	12	14.00	12.63	3.50	16.40
Double Cylinder	1	3.88	3.44	2.56	1.46	12	14.00	12.63	3.50	21.70
One-Sided	1	3.88	3.44	2.56	0.61	12	14.00	12.63	3.50	9.30

TERMS AND CONDITIONS OF SALE

Standard terms are 2% prompt payment discount for payment within 25 days from date of invoice; net 30 days from the date of invoice. Safe Lock by Kwikset® reserves the right to charge and recover on invoices which are not paid within the above terms, a service charge of 1-1/2% a month for each month or fraction thereof during which the invoice remains unpaid, said service charge, however, not to exceed the highest applicable legal rate of interest. All orders, whether solicited or written by our sales representatives or forwarded by our customers are deemed to be mere offers to purchase in accordance with these Terms and Conditions of Sale until actually accepted by us at our home office in Lake Forest, CA. We reserve the right to refuse any order as well as the right to sell or not sell to any firm at our sole discretion. The acceptance of an order is expressly made conditional upon your assent to these Terms and Conditions of Sale. We object to the inclusion of any different or additional terms or conditions, even if the same are included in your order, a contract of sale will result upon the Terms and Conditions of Sale stated herein only. Prices reflected in this book apply to Wholesale customers only.

All sales are final.

PRICES

Pricing based on full-case quantities only; orders for less than full case will be automatically adjusted up to the next full-case quantity. All prices are subject to change without notice and are not guaranteed. All taxes, duties or other charges are the responsibility of the customer.

CLAIMS

Price claims must be submitted in writing to Safe Lock by Kwikset, 19701 Davinci, Lake Forest, CA 92610 within 30 days from the date of invoice.

CHANGES OR CANCELLATIONS

Beyond 5 working days of our acknowledgement date no changes can be made. Additions to an order will be handled as a separate order and must meet applicable minimum order requirements. Order cancellation on regular stock items only, or any portion thereof is allowed only upon prior written consent from Safe Lock by Kwikset, and the payment of cancellation charges deemed appropriate.

MINIMUM CHARGE

No order will be invoiced for less than \$100.00 net plus shipping charges except for lock accessory parts.

MINIMUM ANNUAL SALES VOLUME

The company reserves the right to discontinue direct sales to any customer who does not meet the minimum annual sales volume requirement. The current annual requirement is \$50,000.00. Your annual purchases are determined by accepted, non-cancelled, and shipped orders received during each calendar year. Safe Lock by Kwikset reserves the right to change any or all minimum annual sales volume requirements at any time. Any customer who does not meet the annual sales volume requirements may continue to purchase Safe Lock by Kwikset products through a Safe Lock by Kwikset distributor.

RETURNS

Defective merchandise returned to our factories requires prior written authorization from a Safe Lock by Kwikset Sales Rep or the Sales Office. A factory return authorization must accompany the returned shipment. The return authorization must include an itemized listing of the merchandise and an explanation stating the reason for return.

FREIGHT

All goods are invoiced FOB to our factory. Upon delivery of shipments to the carrier, title to, and the risk of loss or damage in transit for such shipments, passes to our customer. Safe Lock by Kwikset's standard policy is to pay freight charges on all orders over \$1,000.00 net invoice value to a single destination in the continental U. S., by carrier and route of our choice. Shipments less than these quantities will not be shipped on a prepaid basis. If higher freight charges are incurred from customers specifying a carrier or route of their choice the additional cost will be added to that customer's invoice.

DELIVERY CONDITIONS

Shipping schedules are our best estimates, and cannot be guaranteed. Safe Lock by Kwikset is not responsible for any direct or consequential loss or damage resulting from an inability or delay in meeting shipping schedules.

SAFE LOCK BY KWIKSET LIMITED WARRANTIES

Safe Lock by Kwikset products are backed by one of the most comprehensive warranty programs available. You can feel confident that with the purchase of Safe Lock by Kwikset you have selected the best quality product, backed by the best customer service available.

MECHANICAL LIMITED WARRANTY

Except as otherwise provided below, ASSA ABLOY Americas Residential Inc., for its Kwikset® brand products ("Safe Lock by Kwikset"), warrants to the

original residential purchaser (the "Purchaser") that each Safe Lock by Kwikset product (the "Product(s)" or "Safe Lock by Kwikset Product(s)") will be free from mechanical defects under normal use from the date of purchase for as long as said Purchaser occupies the residential premises upon which the Product was originally installed ("Warranty Period"). This Mechanical Limited Warranty applies only to Products that were purchased from Safe Lock by Kwikset or a Safe Lock by Kwikset authorized seller, unless otherwise prohibited by law. Safe Lock by Kwikset Products are legitimately sold only by authorized sellers who are required to follow Safe Lock by Kwikset's policies, procedures, and quality control standards. Safe Lock by Kwikset reserves the right to reject warranty claims from purchasers for Products purchased from unauthorized sellers, including unauthorized Internet sites.

FINISH LIMITED WARRANTY

The finish on Safe Lock by Kwikset Products is protected by a durable topcoat designed to maintain the beauty and quality of the Safe Lock by Kwikset Product. Safe Lock by Kwikset warrants to the Purchaser that the finish of the Product shall be free of defects in material and workmanship from tarnishing, flaking, and discoloring from the date of purchase for as long as said Purchaser occupies the residential premises upon which the Product was originally installed ("Warranty Period"). This Finish Limited Warranty applies only to Products that were purchased from Safe Lock by Kwikset or a Safe Lock by Kwikset authorized seller, unless otherwise prohibited by law. Safe Lock by Kwikset Products are legitimately sold only by authorized sellers who are required to follow Safe Lock by Kwikset's policies, procedures, and quality control standards. Safe Lock by Kwikset reserves the right to reject warranty claims from purchasers for Products purchased from unauthorized sellers, including unauthorized Internet sites.

EXCLUSIONS FROM WARRANTY

1. Any Safe Lock by Kwikset Product produced prior to January 1, 2006.¹
2. Any Safe Lock by Kwikset Product which has been damaged as a result of installation contrary to any of Safe Lock by Kwikset's written installation instructions is not covered by these warranties.
3. Any Safe Lock by Kwikset Product which has been modified by any non-Safe Lock by Kwikset component is not covered by these warranties.
4. Any Safe Lock by Kwikset Product having a defect caused by neglect, misuse, abuse or unreasonable or extraordinary use or maintenance, including use in a commercial application, is not covered by these warranties.
5. Any Safe Lock by Kwikset Product having a defect due to use of paints, solvents, or other chemicals is not covered by these warranties.
6. Any Safe Lock by Kwikset Product that is used in combination with knobs, levers, or trim of other than those manufactured by Safe Lock by Kwikset and designated for use with the applicable locks or latches is not covered by these warranties.
7. Any Safe Lock by Kwikset Product that was purchased from an unauthorized seller is not covered by these warranties.

These warranties are not transferable. Therefore, no transferee is covered by these warranties.

¹ Safe Lock by Kwikset Products produced prior to January 1, 2006, may be eligible for warranty in accordance with the terms and conditions of the applicable warranty program.

WARRANTY CLAIMS

If you wish to make a warranty claim based upon a Product defect, please call us at 1-800-327-LOCK (5625) or contact us at Kwikset.com/support.

Please note that you will be required to provide a description of any claimed defect(s) and a dated receipt or other proof of purchase from Safe Lock by Kwikset or the Safe Lock by Kwikset authorized seller, to verify warranty eligibility.

Certain claimed defect(s) covered by these warranties may be resolved by Safe Lock by Kwikset providing you with troubleshooting steps.

Other claimed defect(s) covered by these warranties may require Product replacement. Products may not be returned to Safe Lock by Kwikset without prior authorization from Safe Lock by Kwikset. If authorized by Safe Lock by Kwikset, you will need to mail your Product to:

ASSA ABLOY Americas Residential Inc.
ATTN: Kwikset Consumer Services
19701 Da Vinci
Lake Forest, CA 92610

A prepaid shipping label will be provided to you.

REMEDIES

For certain claimed defect(s) covered by these warranties, as determined by Safe Lock by Kwikset, Safe Lock by Kwikset will provide you with troubleshooting steps.

For other claimed defect(s) covered by these warranties, as determined by Safe Lock by Kwikset, Safe Lock by Kwikset will replace the defective Product or part.

If a Safe Lock by Kwikset Product, which is the same as the Safe Lock by Kwikset Product or any part covered by these warranties, has been discontinued at the time of replacement or if Safe Lock by Kwikset determines, in its sole discretion, that such replacement is inappropriate, Safe Lock by Kwikset reserves the right to substitute an alternative product. Safe Lock by Kwikset also reserves the right to accept or reject an alternative product proposed as a replacement, when the value is higher than that of the Product originally purchased by the Purchaser. Except as expressly provided in these warranties to the contrary, SAFE LOCK BY KWIKSET SHALL NOT BE OBLIGATED OR LIABLE FOR LABOR OR OTHER COSTS RELATED TO INSTALLATION, REPAIR OR REPLACEMENT OF A SAFE LOCK BY KWIKSET PRODUCT, OR FOR LOSS OF, OR DAMAGE TO ANY MATERIAL WHICH IS NOT SOLD BY SAFE LOCK BY KWIKSET.

PATENT INDEMNITY

We agree to defend any suit or proceeding brought against our customer so far as based on claim that our products, or any part thereof, made solely to our specifications and furnished to our customer constitute an infringement of any U.S. patent, if notified promptly in writing and given authority, information and assistance at our expense for the defense of same, and we shall pay all damages and costs awarded therein against our customer. In case our products, or any part thereof, is in such suit held to constitute infringement and their use is enjoined, we will, at our expense and discretion, either procure for our customer the right to continue using the products or replace same with non-infringing products, or modify them so they become non-infringing, or remove such products and refund the purchase price (less depreciation, prorated from the purchase date). The foregoing states our entire liability for patent infringement by our products or any part thereof.

STANDARDS

Safe Lock by Kwikset meets or exceeds the testing requirements specified for each product grade or rating.

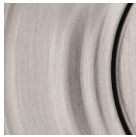
- American National Standards Institute (ANSI)
- Builders Hardware Manufacturers Association (BHMA)
- Underwriters Laboratories, Inc. (UL)
- ADA (Americans with Disabilities Act)

MISCELLANEOUS

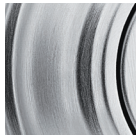
Substitution of non-Safe Lock by Kwikset components/parts, and any alteration or modification of factory parts, and other lock manufacturer's parts may result in door hardware which does not function properly or will fail and will void all warranties.

Orders not specified with keying requirements will be shipped Keyed Differently (KD). Orders with keying requirements of K10 or more must have a "Letter of Release" on file with Safe Lock by Kwikset stating that Safe Lock by Kwikset Corporation will not be held liable for cost and expense arising from any loss or damage to property utilizing Safe Lock by Kwikset products where 10 or more locks have been keyed alike. Contact your Sales Office account representative for a copy of the release form. Safe Lock by Kwikset reserves the right to revise or modify products, product information, or pricing without notice. Product specifications and pricing reflect available information at the time of printing. Safe Lock by Kwikset is not responsible for typographic or printing errors.

Available Finishes



15
Satin
Nickel



26D
Satin
Chrome



26
Polished
Chrome



514
Matte
Black