

SAVE TIME AND MONEY



Hancock Knob

780 Deadbolt



Removable Cylinder

FRONT REMOVABLE CYLINDER RE-KEY SOLUTION

Re-key locks without removing them from the door:

- Fully adjustable latch & deadbolt to fit all standard door preparations
- ANSI/BHMA Grade 2 Security
- Available in multiple styles and finishes
- Lifetime mechanical and finish warranty

MAINTENANCE SAVINGS WITH 780/785 FRONT REMOVABLE CYLINDER

Project: 600 unit multi-family

Average change-out: One lock per year per unit

Average change-out time: 20 minutes

Yearly labor savings at \$15/hr: \$3,000

Kwikset



780 Deadbolt

Specifications:

Door Prep	780, 785: Crossbore 2-1/8" or 1-1/2". Edge Bore 1". Latch Face 1" x 2-1/4" 782, 784: Crossbore 2-1/8". Edge Bore 1". Latch Face 1" x 2-1/4"
Backset	Adjustable to 2-3/8" or 2-3/4" standard.
Door Thickness	1-3/8" - 1-3/4" standard. 1-7/8" - 2-1/4" optional.
Cylinder	6-pin removable core
Faceplates	1" x 2-1/4". Specify round corner or square corner, or drive-in.
Strikes	1-1/4" x 3-5/8". Specify round corner or square corner. Other options available.
Bolt	1" throw.
Door Handing	Reversible for right or left-hand doors.
ANSI/BHMA	Grade 2 Certified.
ADA	Interior turn piece meets 4.13.9 ADA requirements.
UL	Meets UL 3 hour fire rating for 782 and 784. Optional UL 1/3 hour fire rating for all functions.*

Dimensions:

Design	A	B	C (Keyed)
780, 782 Interior	2 1/2"	1 5/16"	1 25/32"
780, 782 Exterior	2 5/8"	1 1/8"	
784, 785 Interior	2 5/8"	1 1/8"	
784, 785 Exterior	2 3/8"	1 1/8"	



Hancock Knob

Specifications:

Door Prep	Cross Bore 2-1/8" or 1-1/2". Edge Bore 1". Latch Face 1" x 2-1/4"
Backset	Adjustable to 2-3/8" or 2-3/4" standard.
Door Thickness	1-3/4" doors standard. 2-1/4" doors optional.
Cylinder	Pin & Tumbler.
Faceplates	1" x 2-1/4". Specify round corner or square corner, or drive-in.
Strikes	2-1/4" full lip. Specify round corner or square corner. Other options available.
Bolt	1/2" throw.
Door Handing	Reversible for right or left-hand doors.
ANSI/BHMA	Grade 2 Certified.
ADA	N/A
UL	Meets UL 3 hour fire rating for 725, 735, 745, 746, 749 and 755. Optional UL 1/3 hour fire rating for all functions.*

Dimensions:

Design	A	B	C
Hancock®	2-5/8"	2-1/2"	2-3/8"

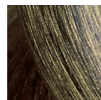
Available Finishes:



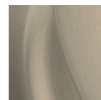
3
Polished
Brass



LO3
Polished
Brass



5
Antique
Brass



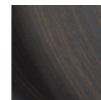
15
Satin
Nickel



15A
Antique
Nickel



26D
Satin
Chrome



11P
Venetian
Bronze