

**Kwikset**  
— Security Series



# PALMINA LEVER

A smart solution for both residential and commercial applications, the Palmina Lever offers convenient push button locking that meets ADA Accessibility guidelines. This lever features a linear and unadorned look that connotes a premium style at an affordable price.

- Featuring SmartKey Security™
- ANSI/BHMA Grade 3 Certification
- Easy to install



Palmina Entry lever  
in Satin Chrome

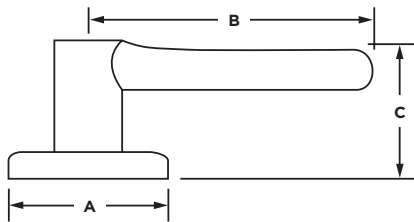
**#1 SELLING U.S. LOCK BRAND\***

Numerator TruView, Unit Share Report, 2024

## Specifications

|                       |   |
|-----------------------|---|
| <b>Door Prep</b>      | Cross Bore 2 1/8". Edge Bore 1" Latch Face 1 x 2 1/4"   |
| <b>Backset</b>        | Adjustable 2 3/8" or 2 3/4"   |
| <b>Door Thickness</b> | 1 3/8" - 1 3/4" Doors standard  |
| <b>Cylinder</b>       | SmartKey Security™  |
| <b>Faceplates</b>     | 1" x 2 1/4" includes round corner   |
| <b>Strikes</b>        | 2 1/4" full lip UL. Includes round corner. Other options available.   |
| <b>Bolt</b>           | 1/2" throw  |
| <b>Door Handing</b>   | Reversible for right or left-handed doors. Specify handing on dummy & entry functions   |
| <b>ANSI/BHMA</b>      | A156.2 Grade 3 (all functions except 488).  |
| <b>UL</b>             | 3 Hr UL certification for passage, privacy & entry functions  |
| <b>ADA</b>            | Lever options are in compliance with the American National Standards Institute (ANSI A117.1) and the Americans with Disabilities Act (ADA). |
| <b>Warranty</b>       | Lifetime Mechanical and Lifetime Finish   |

## Dimensions

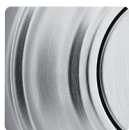


| Design  | A        | B      | C        |
|---------|----------|--------|----------|
| Palmina | 2 14/25" | 3 3/4" | 1 24/25" |

## Finishes



Satin Nickel 15



Satin Chrome 26D

## Functions



**Passage/Hall/Closet:** Both levers always free.  
- 407 PLL



**Privacy/Bed/Bath:** Both levers locked or unlocked by push-button inside. Outside lever unlocked by emergency key.  
- 408 PLL



**Keyed Entry:** Both sides locked or unlocked by key outside or push-button inside.  
- 438 PLL



**Half Dummy Trim, Surface Mounted:** For doors where only a pull is required. No operation.  
- 488 PLL



**One Key For All Your Locks**

Protects against advanced break-in techniques and allows you to re-key your lock yourself in seconds.



Reset tool goes here

Easily re-key yourself

LIFETIME WARRANTY