

Kwikset
— Security Series



LADERA LEVER

Simple and understated, the Ladera lever will surely delight. The linear and unadorned look of the Ladera lever makes it an excellent choice for a transitional or contemporary themed décor.

- Featuring SmartKey Security™
- ANSI/BHMA Grade 3 Certification
- Easy to install
- Available with square or round rose



Ladera Entry lever with round rose
in Polished Chrome



Ladera Entry lever with square rose
in Polished Chrome

#1 SELLING U.S. LOCK BRAND*

Numerator TruView, Unit Share Report, 2024

Specifications

Door Prep	Cross Bore 2 1/8". Edge Bore 1" Latch Face 1 x 2 1/4"
Backset	Adjustable 2 3/8" or 2 3/4"
Door Thickness	1 3/8" - 1 3/4" Doors standard. Thick Door Kit Available for 200 & 405 functions for up to 2 1/4"
Cylinder	SmartKey Security™ or traditional 5-pin Pin & Tumbler
Faceplates	1" x 2 1/4" includes round corner, square corner and drive-in
Strikes	2 1/4" full lip. Includes round corner. Other options available.
Bolt	1/2" throw
Door Handing	Reversible for right or left-handed doors. Specify handing on dummy and handleset interiors only.
ANSI/BHMA	A156.2 Grade 3 (all functions except 488).
UL	N/A
ADA	N/A
Warranty	Lifetime Mechanical and Lifetime Finish

Functions



Passage/Hall/Closet: Both levers always free.
- 200 LRL



Privacy/Bed/Bath: Both levers locked or unlocked by turn-button inside. Outside lever unlocked by emergency key.
- 300 LRL



Keyed Entry: Both sides locked or unlocked by key outside or turn-button inside.
- 405 LRL



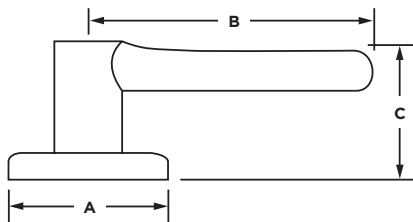
Half Dummy Trim, Surface Mounted: For doors where only a pull is required. No operation.
- 488 LRL



Interior Pack: Inside lever & thumb turn of handleset.
687/800 Handlesets:
- 966 LRL: Single Cylinder



Dimensions



Design	A	B	C	C (Keyed)
Ladera Round Rose	2 5/8"	4 3/16"	1 7/8"	2 7/16"
Ladera Square Rose	2 5/8"	4 3/16"	1 7/8"	2 7/16"

Finishes



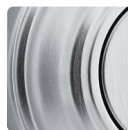
Matte Black **514**



Satin Nickel **15**



Polished Chrome **26**

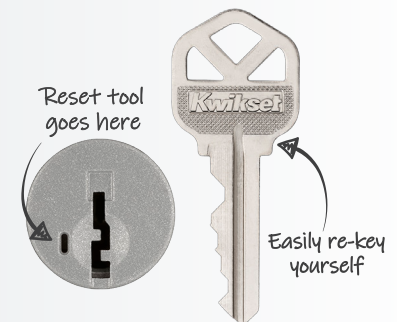


Satin Chrome **26D**



One Key For All Your Locks

Protects against advanced break-in techniques and allows you to re-key your lock yourself in seconds.



LIFETIME WARRANTY