

Kwikset
— Security Series



HENLEY LEVER

Henley levers combine subtle details with ergonomic curves, creating a versatile design that complements any home aesthetic. The unique designer rosette will add style and dimension to your doors, and our full suite of products can outfit the interior and exteriors of your home. Enjoy trusted security, peace of mind and an easy install from the number-one-selling U.S. lock brand.

- Featuring SmartKey Security™
- ANSI/BHMA Grade 3 Certification
- Easy to install



Henley Entry Lever in Matte Black

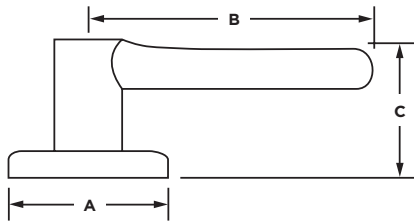
#1 SELLING U.S. LOCK BRAND*

Numerator TruView, Unit Share Report, 2024

Specifications

Door Prep	Cross Bore 2 1/8". Edge Bore 1" Latch Face 1 x 2 1/4"
Backset	Adjustable 2 3/8" or 2 3/4"
Door Thickness	1 3/8" - 1 3/4" Doors standard. Thick Door Kit Available for 200 & 405 functions for up to 2 1/4"
Cylinder	SmartKey Security™
Faceplates	1" x 2 1/4" includes round corner, square corner and drive-in
Strikes	2 1/4" full lip. Includes round corner, other options available.
Bolt	1/2" throw
Door Handing	Reversible for right or left-handed doors.
ANSI/BHMA	A156.2 Grade 3 (all functions except 488).
UL	N/A
ADA	N/A
Warranty	Lifetime Mechanical and Lifetime Finish

Dimensions

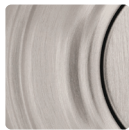


Design	A	B	C	C (Keyed)
Henley	2 5/8"	4 3/32"	2 9/16"	2 19/32"

Finishes



Matte
Black 514



Satin
Nickel 15

Functions



Passage/Hall/Closet: Both levers always free.
- 200 HYL



Privacy/Bed/Bath: Both levers locked or unlocked by turn-button inside. Outside lever unlocked by emergency key.
- 300 HYL



Keyed Entry: Both sides locked or unlocked by key outside or turn-button inside.
- 405 HYL



Half Dummy Trim, Surface Mounted: For doors where only a pull is required. No operation.
- 488 HYL

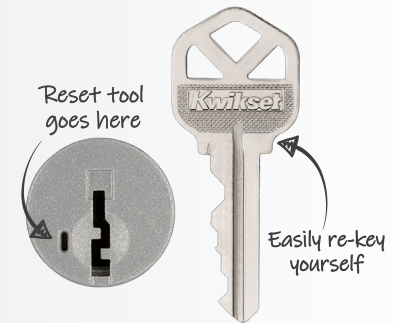


Interior Pack: Inside lever & thumb turn of handleset.
687/800 Handlesets:
- 966 HYL: Single Cylinder



One Key For All Your Locks

Protects against advanced break-in techniques and allows you to re-key your lock yourself in seconds.



LIFETIME WARRANTY