



Kwikset



Ashfield™ LEVER

Stylish and timeless, Ashfield's vintage inspired design brings together time-honored country traditions.

- Reversible Lever Fits Both Left and Right Handed Doors
- Concealed Screws
- ANSI BHMA Grade 2 Certified

Signature Series



Ashfield™ Lever
in Iron Black



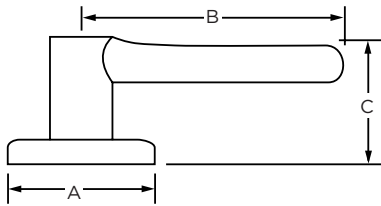
#1 SELLING U.S. LOCK BRAND*

*Source: TraQline US quarterly brand unit share report, Q4 2006 through Q3 2018

Specifications

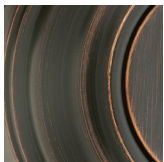
Door Prep	Cross Bore 2-1/8". Edge bore 1".
Backset	Adjustable 2-3/8" or 2-3/4". UL functions 2-3/4" standard or 2-3/8" optional.
Door Thickness	1-3/8" - 1-3/4" Doors standard. 2-1/4" doors optional on 720 and 740 functions only.
Cylinder	SmartKey Security™
Faceplates	1" x 2-1/4" Specify round corner, square corner or drive-in.
Strikes	2-1/4" Full lip. Specify round corner or square corner. Other options available.
Bolt	1/2" Throw
Door Handing	Reversible for both Left and Right handed doors. Specify handing only with Inactive and Interior Pack levers.
ANSI/BHMA	Grade 2 Certified
ADA	Functions 720 and 788 satisfy section 4.13.9 ADA requirement.
UL	Meets UL 3 hour fire rating for 725, 735, 745, 746, 755. Optional UL 1/3 hour fire rating for all functions.

Dimensions



Design	A	B	C	C (Keyed)
Ashfield™	2 5/8"	4 3/16"	2 9/16"	2 19/16"

Finishes



Venetian Bronze 11P



Satin Nickel 15



Polished Chrome 26

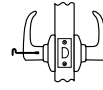


Iron Black 514

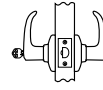
Functions



Passage/Hall/Closet: Both levers always free



Privacy/Bed/Bath: Both levers locked or unlocked by turnbutton inside. Outside lever unlocked by emergency key



Keyed Entry Lever: Both sides locked or unlocked by key outside or turnbutton inside



Half Dummy Trim, Surface Mounted: For doors where only a pull is required. No operation



Ashfield™ Lever in Satin Nickel



Ashfield™ Lever in Venetian Bronze

