

**Kwikset**  
SIGNATURE SERIES

# CHELSEA HANDLESET

The oval design of the Chelsea beautifully outfits any colonial or traditional entryway.

- Features New Advanced SmartKey Security™
- Handleset Deadbolt has ANSI/BHMA Grade 1 Certification
- Lifetime Mechanical and Finish Warranty
- Compatible with 966 UNIV interior packs for 800 and 814 series handlesets and 968 dummy interior packs for 802 series handlesets



**#1 SELLING U.S. LOCK BRAND\***

Numerator TruView, Unit Share Report, 2024

## Specifications

|                       |  |
|-----------------------|--|
| <b>Door Prep</b>      | Cross Bore 2 1/8". Edge Bore 1"<br>Latch Face 1" x 2 1/4"  |
| <b>Backset</b>        | Adjustable 2 3/8" or 2 3/4"  |
| <b>Door Thickness</b> | 1 3/4" Standard. Thick door service part available for up to 2 1/4"  |
| <b>Faceplates</b>     | 1" x 2 1/4" includes round corner, square corner and drive-in  |
| <b>Strikes</b>        | <b>Deadbolt:</b> 1 1/8" x 2 3/4", square, round corner & 2 1/4" full lip round corner<br><b>Handle:</b> 2 1/4" round corner full lip (Other options available) |
| <b>Bolt</b>           | <b>Deadbolt:</b> 1" throw<br><b>Handle:</b> 1/2" throw   |
| <b>Cylinder</b>       | SmartKey Security™   |
| <b>Door Handing</b>   | Reversible for right or left-hand doors  |
| <b>ANSI/BHMA</b>      | Deadbolt is Grade 1 Certified  |
| <b>UL</b>             | N/A  |
| <b>ADA</b>            | N/A  |
| <b>Warranty</b>       | Lifetime mechanical and lifetime finish  |

## Functions



**Handleset (Single-Cylinder):** Exterior only, Latch bolt operated by thumb piece outside. Deadbolt operated by key outside.  
**- 800CE SMT**



**Handleset (Dummy):** Exterior only, Handle acts as pull only. For inactive leaf or double doors. No Operation.  
**- 802CE**

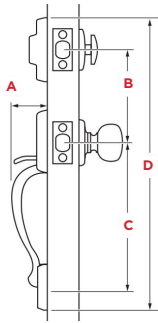


**Handle with Knob:** Latch bolt operated by thumb piece outside and knob inside. No Deadbolt.  
**- 815CE x H**  
[Available with Hancock (H) knob]



**Handle Only:** Handle only. Latch bolt operated by thumb piece outside.  
**- 814CE**

## Dimensions

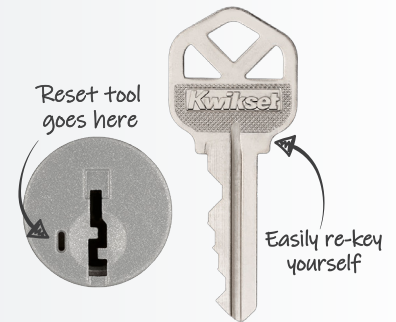


| Dimensions | A       | B      | C       | D       |
|------------|---------|--------|---------|---------|
| Chelsea    | 2 3/16" | 5 1/2" | 9 1/16" | 18 1/2" |



### One Key For All Your Locks

Protects against advanced break-in techniques and allows you to re-key your lock yourself in seconds.



## Finishes



Polished Brass **LO3/5**



Satin Nickel **15**



Venetian Bronze **11P**



Polished Chrome **26**

