

HALIFAX™ RECTANGLE LEVER


Signature Series

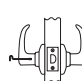
Specifications

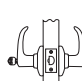
Door Prep	Cross Bore 2 1/8". Edge Bore 1". Latch Face 1" x 2 1/4".
Backset	Adjustable 2 3/8" or 2 3/4"
Door Thickness	1 3/8" - 1 3/4" Doors standard Thick door service part available for up to 2 1/8"
Cylinder	SmartKey Security™
Faceplates	1" x 2 1/4" Specify round corner, square corner or drive-in
Strikes	2 1/4" Full lip round

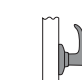
Bolt	1/2" Throw
ANSI/BHMA	Grade AAA Certified: Finish/Durability/Security
UL	Optional 20 Minute UL fire rating available, except inactive functions.
Door Handing	Reversible for right or left hand doors
ADA	720 & 730 functions are in compliance with the American national Standards Institute (ANSI A117.1)
Warranty	Lifetime Mechanical and Lifetime Finish

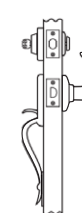
Functions

 **Passage/Hall/Closet:** Both levers always free.
- 720 HFL RCT

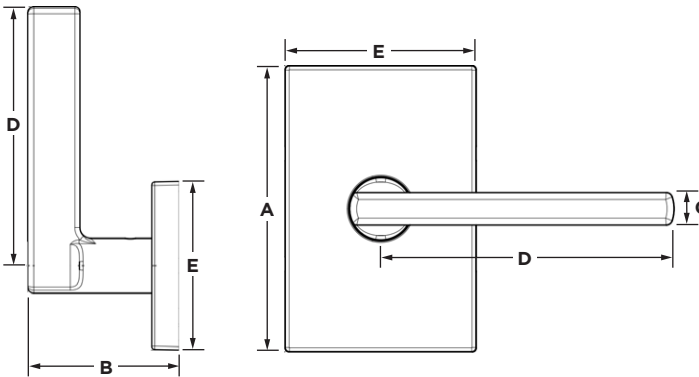
 **Privacy/Bed/Bath:** Both levers locked or unlocked by push-button inside. Outside lever unlocked by emergency key.
- 730 HFL RCT

 **Keyed Entry Lever:** Both sides locked or unlocked by key outside or turn-button inside.
- 740 HFL RCT

 **Half Dummy Trim, Surface Mounted:** For doors where only a pull is required. No operation.
- 788 HFL RCT

 **Interior Pack:** Inside lever of handleset.
800 Handlesets:
- 973 HFL RCT: Dummy
818 Handlesets:
- 971 HFL RCT: Single-Cylinder

Dimensions



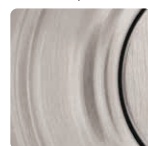
Design	A	B	B (Keyed)	C	D	E
Halifax™ RCT	4 1/8"	2 1/2"	2 9/16"	7/16"	4 1/4"	2 25/32"

- ANSI/BHMA Grade AAA Certified
- Easy to Install
- Best-in-class Lever Chassis
 - Significantly Reduced Lever Sag
 - Greater Feel
- New, Bold, Rectangular Trim

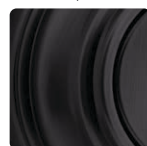


Finishes

MICROBAN®



Satin Nickel 15



Matte Black 514



Polished Chrome 26



Halifax™ Rectangle Lever SmartKey Security™ in Polished Chrome



Halifax™ Rectangle Passage Lever in Matte Black

Kwikset



SAN CLEMENTE RECTANGULAR TRIM HALIFAX™ LEVER & 258 LOW PROFILE DEADBOLT

Introducing the contemporary San Clemente Rectangular Trim - Available with the Halifax lever and the 258 Low Profile Deadbolt. These new products bring sophistication and a modern design with clean lines in a bold rectangular trim. The Halifax lever with the San Clemente rectangular trim features a new chassis with superior feel and anti-lever sag. Pair with any contemporary mechanical or electronic deadbolt. The San Clemente rectangle deadbolt features our advanced SmartKey Security™ technology and highest residential security/durability/finish. Pair our rectangular deadbolt with our Halifax rectangular lever or San Clemente handle.

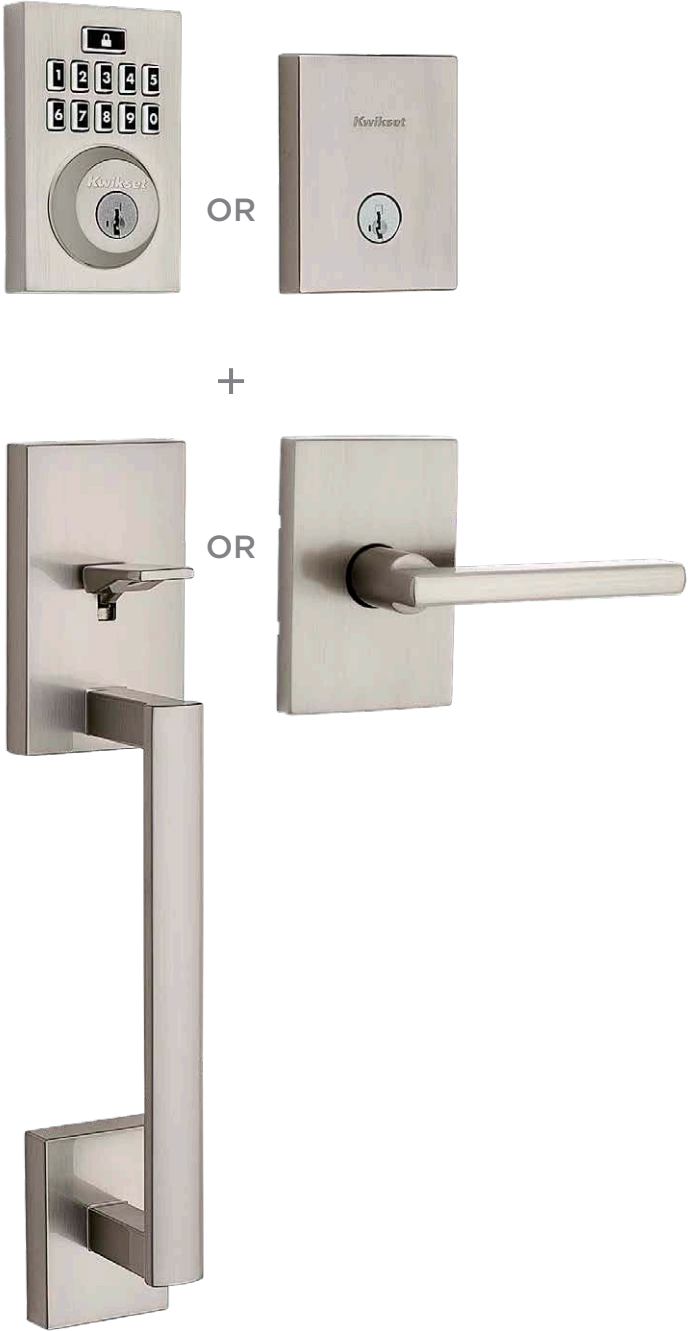


SAN CLEMENTE LOW PROFILE RECTANGLE DEADBOLT

Signature Series

Mix & Match

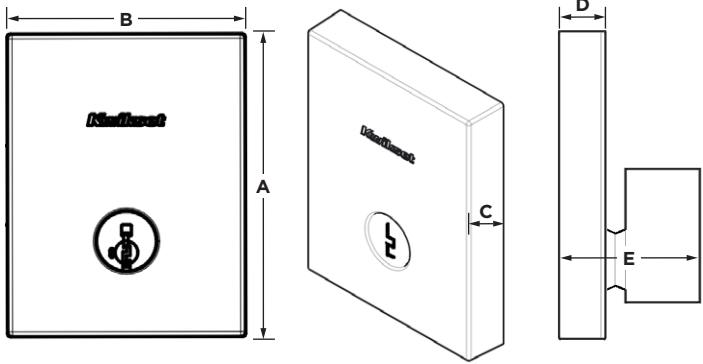
Pair any contemporary mechanical or electronic deadbolt with the San Clemente handle or Halifax™ Rectangle trim.



Specifications

Function	258 RCT SMT Keyed Entry Single Cylinder
Standard Door Prep	Cross Bore 2 1/8", Edge Bore 1". Latch Face 1 1/8" x 2 3/4".
Door Thickness	1 3/8" - 1 3/4" Standard. Thick door service part available for up to 2 1/2".
Cylinder	SmartKey Security™
Faceplate	1" x 2 1/4"
Strike	1 1/8" x 2 3/4"
Bolt	1" Throw
ANSI/BHMA	Grade AAA Certified: Finish/Durability/Security
ADA	258 functions are in compliance with the American National Standards Institute (ANSI A117.1)
UL	Optional 20 Minute UL fire rating available, except inactive functions.
Warranty	Lifetime Mechanical and Lifetime Finish

Dimensions



Design	A	B	C	D	E
San Clemente RCT SMT	3 9/16"	2 3/4"	9/16"	1/2"	1 15/32"

- ANSI/BHMA Grade AAA Certified
- Easy to Install
- Sleek Low Profile Deadbolt Design
- New, Bold, Rectangular Trim
- Contemporary Design with Clean Lines

Finishes

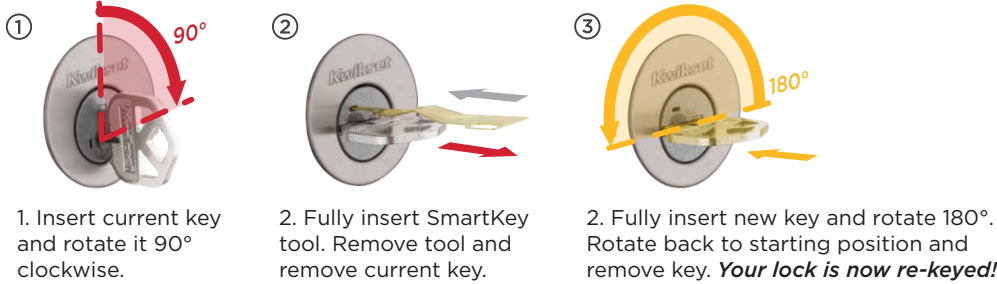


99.9% Cleaner Than Unprotected Surface

MICROBAN
ANTIMICROBIAL TECHNOLOGY

Kwikset with Microban® inhibits growth of damaging bacteria, providing you with a cleaner home.

How to re-key in seconds



! You must have the working key to rekey the lock

