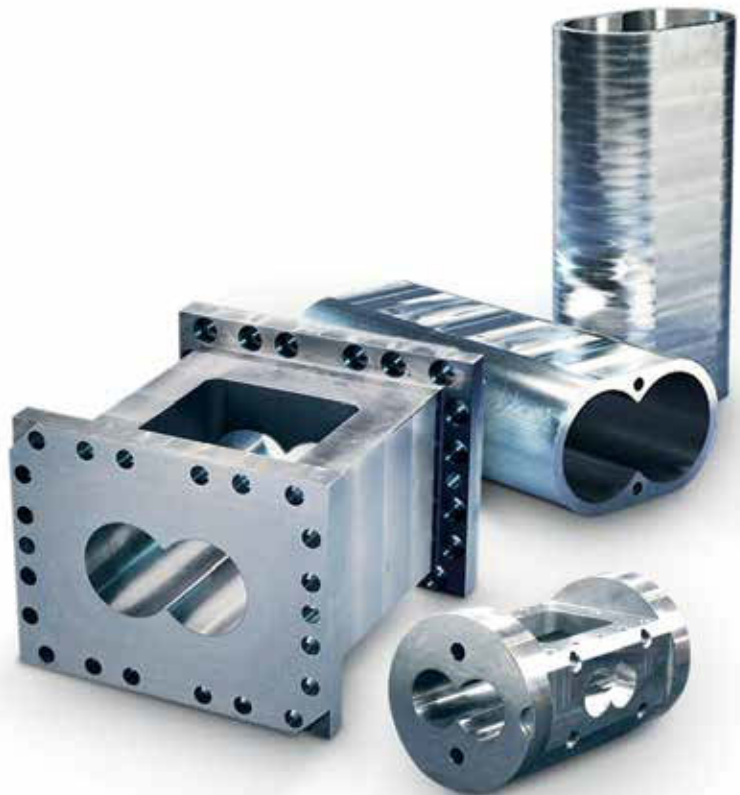


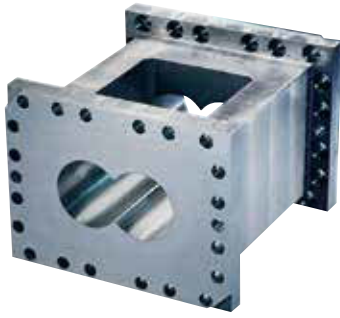
Conforma Clad™ Twin-Screw, Co-Rotating Extruder Barrels

Lasts up to 3x Longer

...for increased service life in the most extreme extrusion processes!

- **Increased Component Life**
Maintain maximum performance levels with increased system availability and profitability. Kennametal's Conforma Clad barrels last up to three times longer than those protected by competitive materials.
- **Improved Abrasion and Corrosion Resistance**
While competitive materials can only provide protection from one mode of wear, our cladding has been scientifically engineered to resist both abrasion and corrosion.
- **Enhanced Heat Transfer**
Our direct-clad barrels provide excellent heat transfer when needed.
- **Reduced Risk of Catastrophic Failures**
Our uniform, metallurgically-bonded cladding promises dependable wear rates and predictable life. And our direct-clad barrels and sleeves prevent costly equipment failures.
- **Increased Consistency and Quality**
Protecting critical equipment tolerances permits tighter process control, resulting in more consistent product quality and throughput.
- **Engineered Cladding Solutions**
A large assortment of standard and custom cladding formulations are available to meet all of your wear protection needs.





Conforma Clad™ twin-screw extruder barrels are engineered to withstand the most extreme extrusion processes. Kennametal manufactures wear-protected replacement barrels and liners for virtually all OEMs.

Our infiltration brazed tungsten carbide cladding is metallurgically bonded to barrel surfaces, resulting in barrels that are extremely abrasion and corrosion resistant. The unique cloth delivery system of Kennametal's Conforma Clad enables densely-packed tungsten carbide to be uniformly applied to complex geometries, providing a protective barrier that wears at a consistent and predictable rate.

Tri-Metallic Advantage™

Our exclusive Tri-Metallic Advantage is the only available wear solution that uses multiple cladding formulas to target the distinct properties required to protect extruder barrel bores and apexes.

We directly clad the bores of steel extruder barrels with WC 200 cladding and apply WC 219 cladding to the apexes. The barrel is then infiltration brazed, metallurgically bonding the two claddings to the substrate and creating a resilient, seamless barricade to extreme wear.

Over 16 years ago, Kennametal and Coperion co-developed this tri-metallic wear solution for extruder barrels known as WPR-29. Now, the same tri-metallic protection is available to end-users directly from Kennametal.



Specifications

BARREL SPECIFICATIONS

Dimensions (mm)

Manufacturer	Bore Diameter	Barrel Length
B&P Process Equipment	30–133	93–510
Berstorff	43–140	160–650
Clextral S.A.	53–200	185–700
Coperion Corporation	30–177	93–720
Davis-Standard Corporation	32–152	105–490
Entek Extruders	27–133	144–510
Leistritz Corporation	27–135	108–490
Toshiba	41–136	164–544
Theysohn	30–120	120–560

Cladding Specifications

Substrates	Cladding can be applied to most carbon steels, precipitation hardened steels, stainless steels and other corrosion-resistant alloy materials.
Temperature	Continuous operation at temperatures up to 1900° F (1038° C) with nominal performance impact. Able to withstand transients in excess of 2000° F (1093° C).
Chemical Resistance	Compatible with all chemicals commonly found in plastics extrusion, including hydrochloric acid, sulfuric acid and nitric acid.

Kennametal Inc.
501 Park East Boulevard
New Albany, IN 47150 USA
Tel: +1 812 948 2118
Fax: +1 812 944 3254

FOR FURTHER INFORMATION

+1 888 289 4590 or +1 812 948 2118

www.kennametal.com