

Kennametal Composite Rods

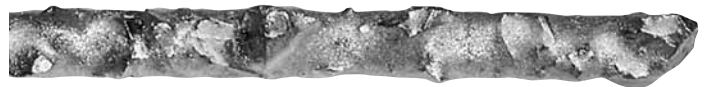
Kennametal's composite rods can be applied with an oxy-fuel torch utilizing a neutral to 2X carburizing flame. They can be applied to almost any clean steel surface that can be placed into a horizontal position for application. An area should be cleaned and preheated prior to application to insure proper wetting of the carbides to the metal substrate.

Cutting Grades

Kennametal's composite rods contain large carbides for extended life where cutting action is required. Standard size rods are 1/2" x 3/8" x 18" with 70% tungsten carbide/cobalt (Kenface™) that's processed to produce sharp blocky grains for metalcutting.

Wear Grades

Kennametal incorporates finer mesh carbide into its composite rod to insure maximum protection to the base metal. Standard size rods are 1/2" x 3/8" x 18" with 65% tungsten carbide/cobalt (Kenface™) and are ideally suited to create wear points and provide protection for the base metal.



	Order Code	Shape	US Mesh	Kenface™ Fraction
Cutting Grades	1821139	Rod	2 x 3	5/16 x 1/4
	1821140	Rod	3 x 4	1/4 x 3/16
	1821141	Rod	4 x 6	3/16 x 1/8
	1821142	Rod	6 x 8	1/8 x 1/16
Wear Grades	1820922	Rod	8 x 14	3/32 x 1/16
	1821135	Rod	10 x 20	5/64 x 1/32
	1797378*	Rod	2 x 3	5/16 x 1/4
	1797379*	Rod	3 x 4	1/4 x 3/16
	5359539*	Rod	10 x 20	5/64 x 1/32
Tinning Rod	1818065	Alloy	—	3/16 x 3/6

*Indicates flux coated

Conversion Chart

Fraction	Decimal	MM
1/32"	0.031	0.795
1/16"	0.063	1.588
5/64"	0.078	1.984
3/32"	0.094	2.383
1/8"	0.125	3.175
3/16"	0.188	4.763
1/4"	0.25	6.35
5/16"	0.313	7.938

KENNAMETAL METALLURGICAL QUALITY SYSTEMS ARE ISO-REGISTERED!

Kennametal Inc.
1600 Technology Way
Latrobe, PA 15650 USA
Tel 724.539.5000
800.533.1965
Fax 724.539.4942
www.kennametal.com

Kennametal Inc.
347 North Taylor Street
Fallon, NV 89406 USA
Tel 775.428.6286
800.443.7295
Fax 724.539.4942
us-energy@kennametal.com