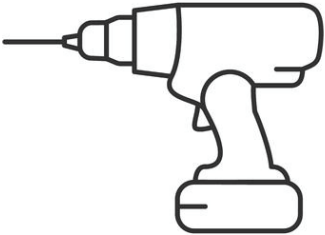


# MOD Modular Lounge Installation Instructions

HBF

**TOOLS REQUIRED**



**POWER DRIVER/DRILL**



**PHILLIPS SCREW DRIVER**



**4MM/8MM ALLEN WRENCH**

## SINGLE LEG ASSEMBLY

USED FOR SINGLE/OUTER PLACEMENT IN ASSEMBLY

- Flathead Machine Bolt 1/2" -13
- Connector Plate
- Metal Leg
- Adjustable Glide



## CONNECTOR LEG ASSEMBLY

USED FOR SECTION TO SECTION  
PLACEMENT IN ASSEMBLY

- Flathead Machine Bolt  $\frac{1}{2}$ " -13
- Connector Plate
- Metal Leg
- Adjustable Glide



## CORNER LEG ASSEMBLY

USED FOR INSIDE CORNER SECTIONS  
PLACEMENT IN ASSEMBLY

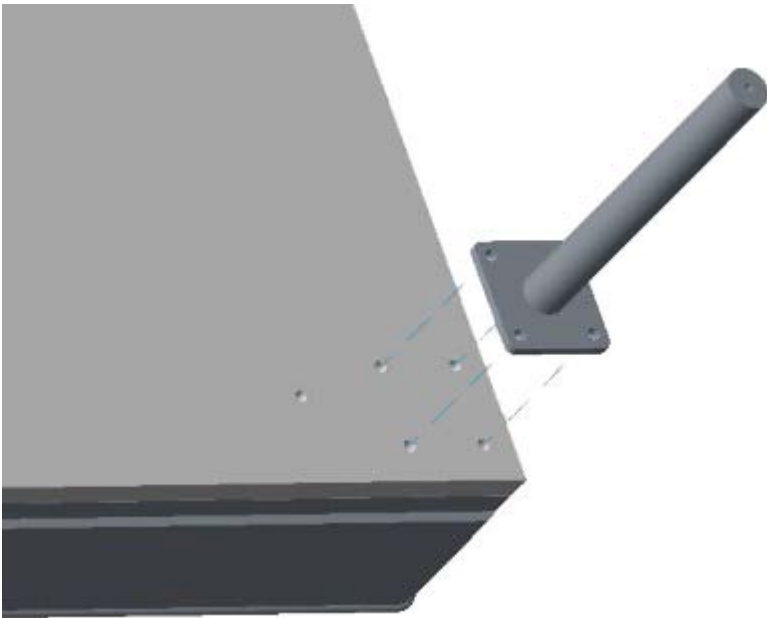
- Flathead Machine Bolt  $\frac{1}{2}$ " -13
- Connector Plate
- Metal Leg
- Adjustable Glide



## SINGLE LEG ATTACHMENT

USED FOR SINGLE/OUTER PLACEMENT IN ASSEMBLY

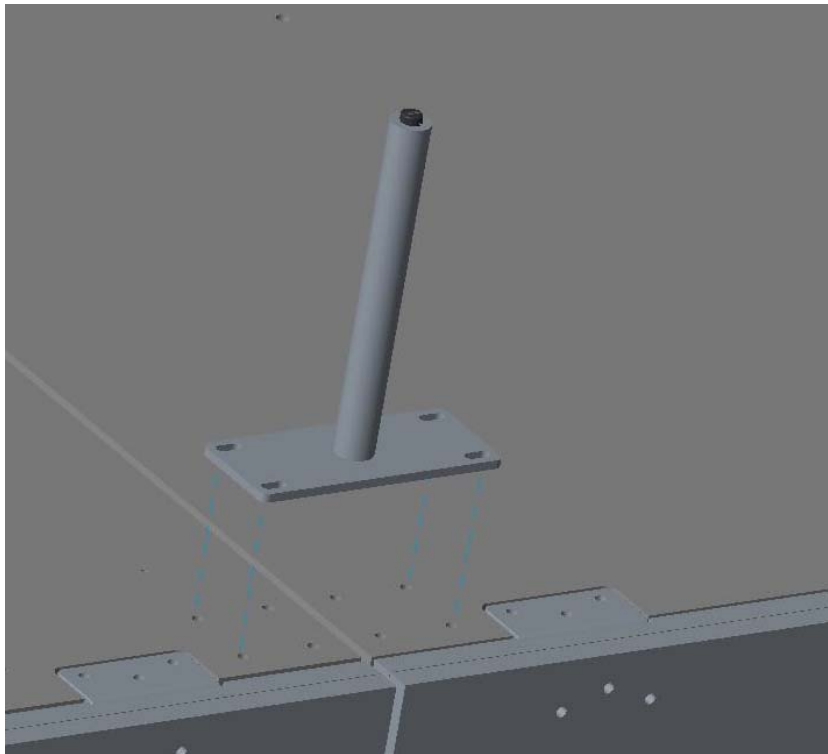
- (4) ¼-20 x 45mm Ultra Low Profile Socket Head Bolt
- Connector Plate
- Metal Leg
- Adjustable Glide



## CONNECTOR LEG ATTACHMENT

USED FOR SECTION TO SECTION  
PLACEMENT IN ASSEMBLY

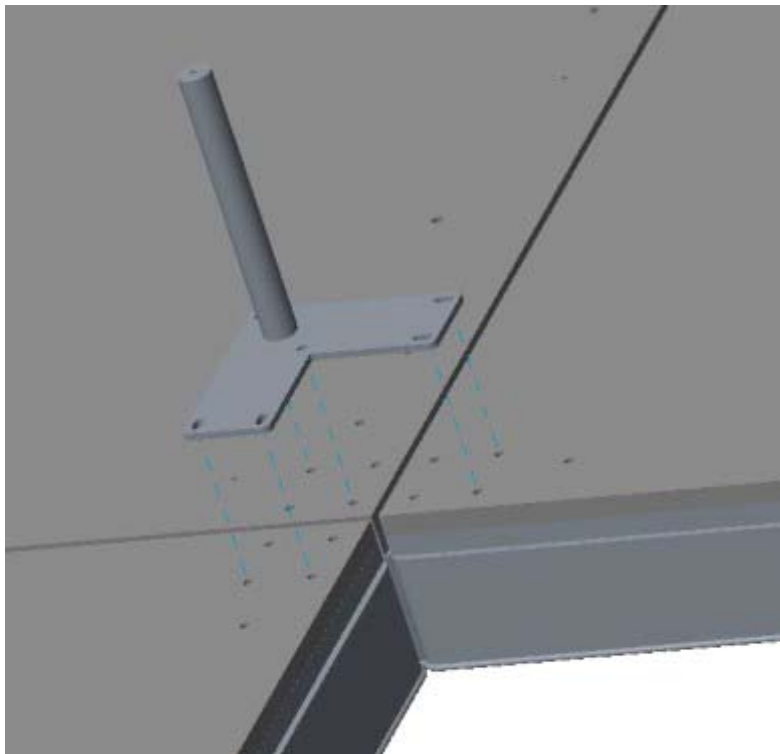
- (4) ¼-20 x 45mm Ultra Low Profile Socket Head Bolt



## CORNER LEG ATTACHMENT

USED FOR INSIDE CORNER SECTIONS  
PLACEMENT IN ASSEMBLY

- (6) ¼-20 x 45mm Ultra Low Profile Socket Head Bolt

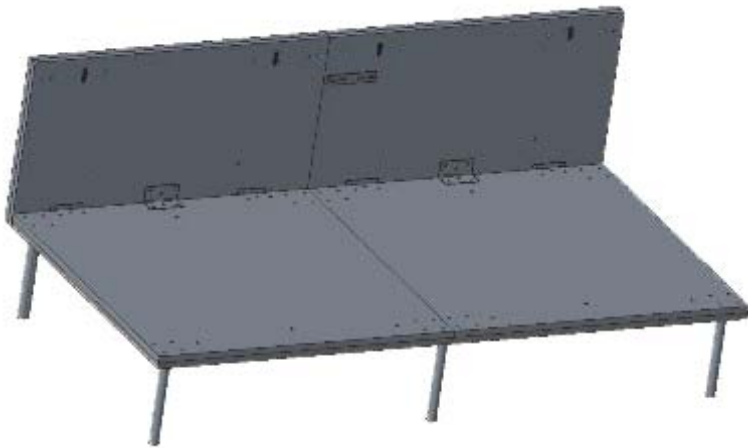




## MENDING PLATE ATTACHMENT

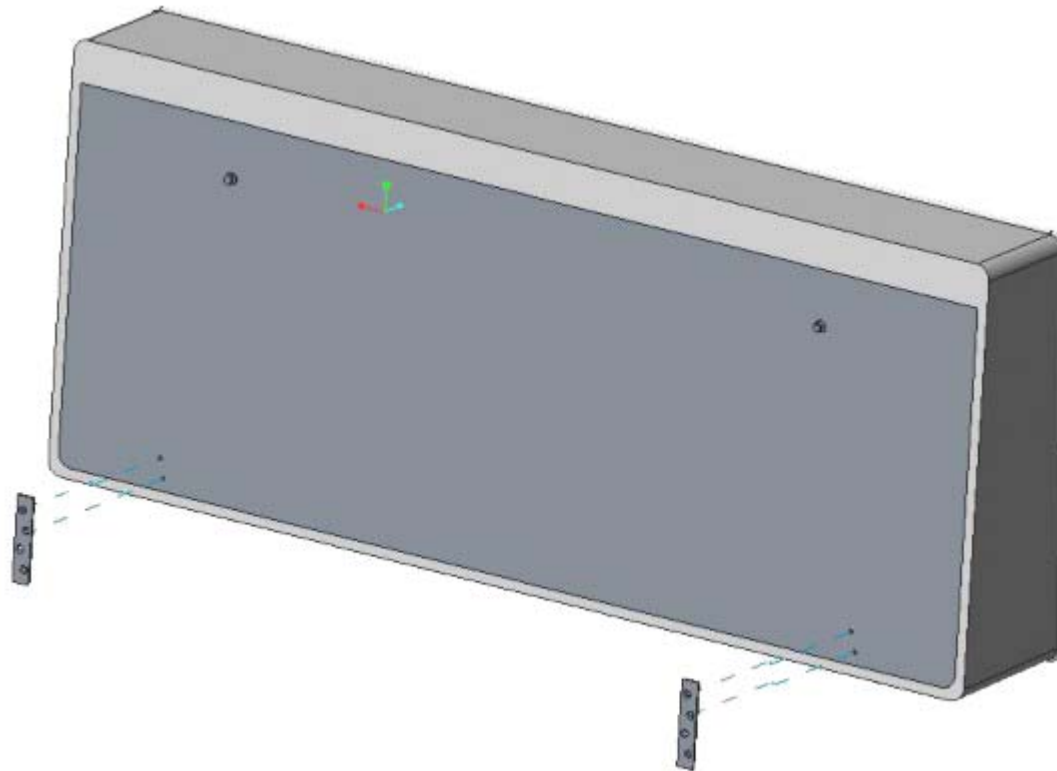
USED FOR JOINING BACK SECTIONS

- (4) ¼-20 x 40mm Ultra Low Profile Socket Head Bolt



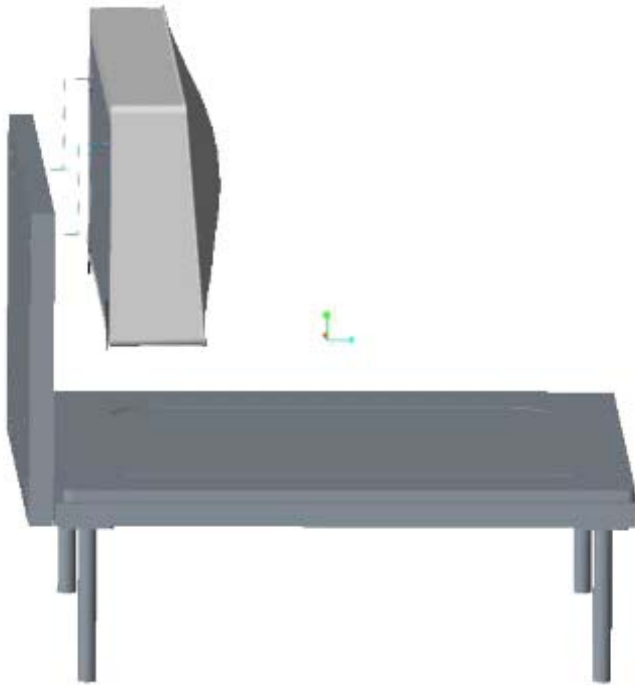
## PREP BACK/ARM CUSHION

- Attach bracket to cushion with 8-32 machine Screws (x2) per bracket



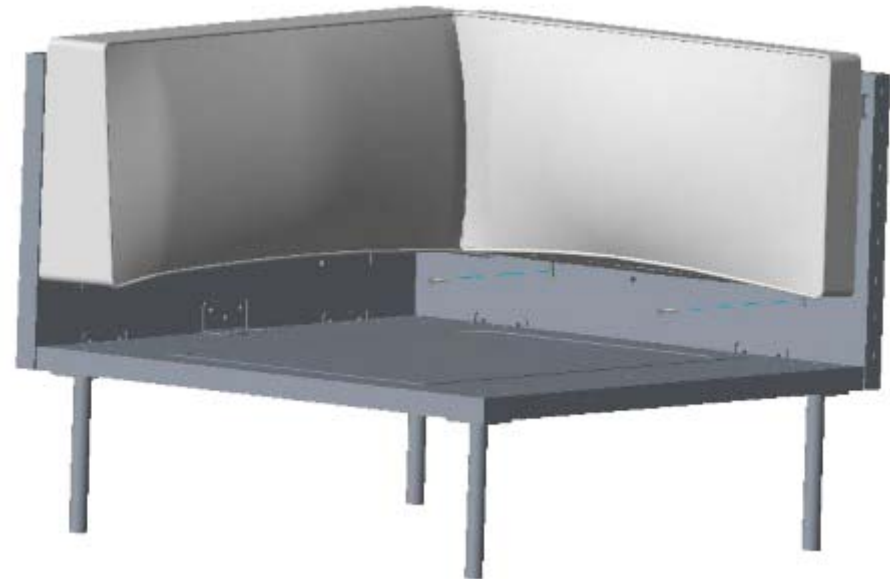
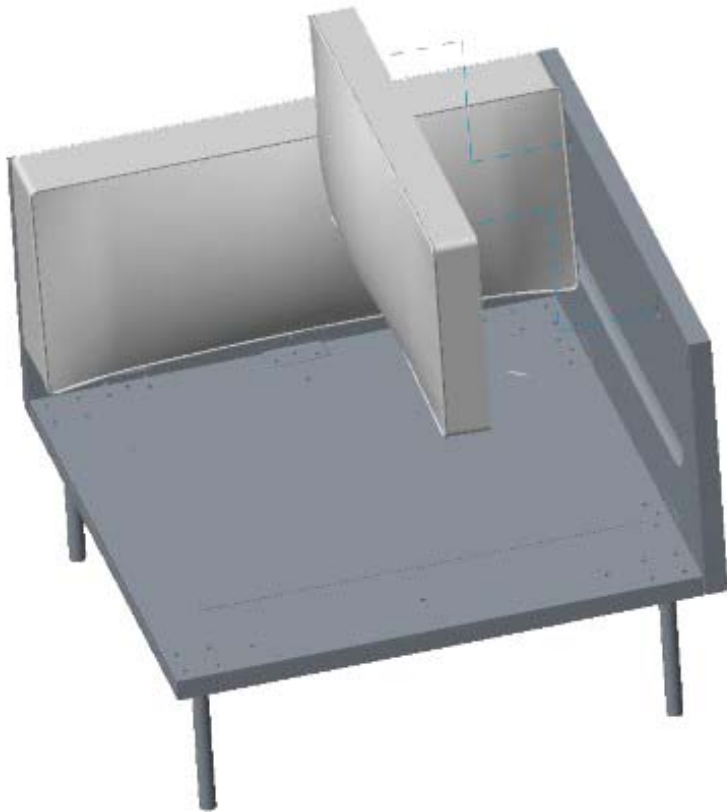
## ATTACHING BACK CUSHION (ARMLESS)

- Hook Cushion onto back aligning studs with pre installed clips
- Attach back with 3/4" Wood Screws (x2)



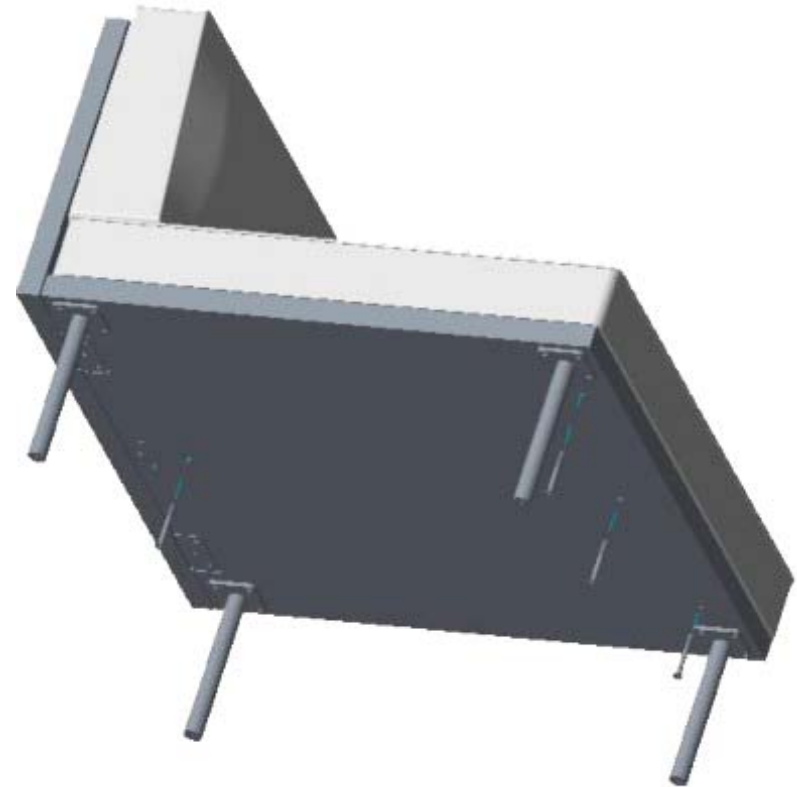
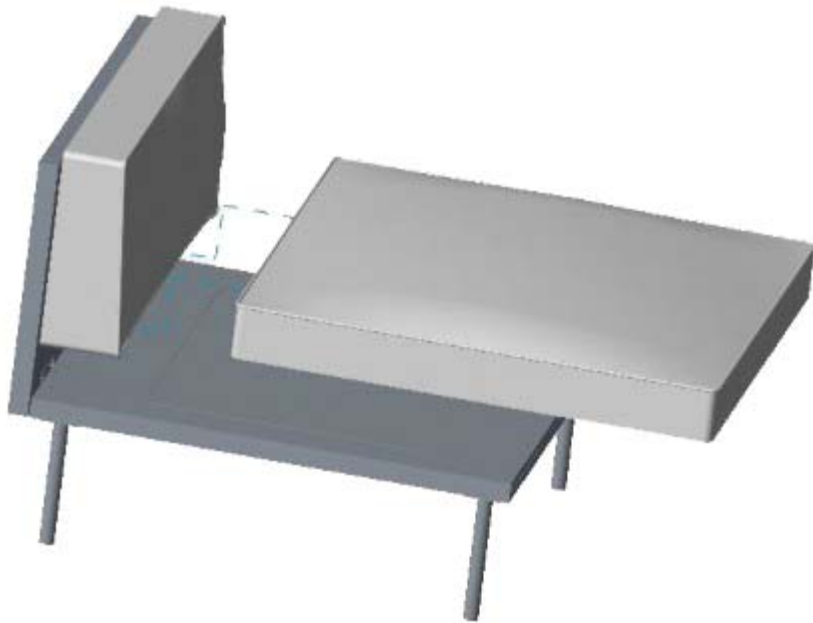
## ATTACHING ARM CUSHION

- Hook Cushion onto back
- Attach arm with 3/4" Wood Screws (x2)



## ATTACHING SEAT CUSHION (ARMLESS)

- Slide seat cushion onto deck (use force)
- Secure with (6) 2 ½" Wood Screws on bottom side



HBF