

**NEXT GENERATION**

# **MOTOR GRADERS**



---

140 | 150 | 160



The Next Generation Cat® Motor Graders are versatile mid-size machines designed to take on a wide range of applications with confidence. Delivering an ideal balance of power, precision control, and blade reach, they excel at grading, crowning, and ditching. From snow removal and slope work to material processing and finish grading, operators can perform every task efficiently and comfortably in the redesigned cab.

# NEXT GENERATION CAT® MOTOR GRADERS

RELIABLE ROAD GRADING WITH ADVANCED TECHNOLOGY



## EXPERIENCE THE POWER OF THE NEXT GENERATION CAT MOTOR GRADERS

Built with customers in mind, the redesigned next generation motor graders combine operator-focused comfort and service-friendly design to help you achieve grade faster, operate more efficiently, and stay productive longer.

- + OPTIMIZED FOR GREATER OPERATOR VISIBILITY
- + INCREASED UPTIME WITH EXTENDED SERVICE INTERVALS
- + MAXIMIZED PRODUCTIVITY TO HIT GRADE FASTER



---

## OPERATOR-FIRST DESIGN

Operators come first with improved climate control, plenty of seat adjustments, and enhanced all-around visibility. Boost jobsite safety even more with optional integrated rear vision, front vision, and 360° cameras that show in the main display.

---

## PRODUCTIVITY THAT FITS

Take control with your choice of joysticks or levers. Next generation motor graders are factory-ready for optional grade technology and built for easy attachment upgrades that help you expand your capabilities and get work done faster.

---

## EFFICIENCY ENGINEERED INTO EVERY GEAR

Next generation graders deliver increased fuel economy while maintaining a balanced weight-to-power ratio. Power is optimized across all gears to ensure smooth and efficient performance in every operating condition.





# GET COMFORTABLE BE PRODUCTIVE.

The spacious and redesigned Next Generation cab resets the industry standard for comfort and visibility. Choose steering controls and configure technology, attachments, and safety features from the factory to redefine how grading gets done.

## DESIGNED FOR HOW YOU WORK

- + LARGE TOUCHSCREEN DISPLAY INTEGRATES MORE OPTIONS
- + OPTIONAL PREMIUM AIR SUSPENSION SEAT INCLUDES HEATING AND COOLING
- + READY-TO-CUSTOMIZE RADIO PREFERENCES FOR SEAMLESS COMMUNICATIONS, MUSIC, AND SOLO CONCERTS IN THE CAB
- + INCLUDES A CUP HOLDER, CELLPHONE HOLDER, AND CONVENIENT IN-CAB STORAGE

# ENGINEERED FOR THE BIG PICTURE

# CONTROL.

# CLARITY. SAFETY.

With expanded visibility in every direction, smart tech integration, and operator-focused refinements, the redesigned motor grader cab helps crews confidently work smarter and safer, no matter the conditions.



## CONTROL

The latest motor grader cab prioritizes visibility and operator control. Floor-to-ceiling glass and a slanted door design help eliminate blind spots near the moldboard, giving operators a clear line of sight to the blade and material flow, and maintaining fuel efficiency.

## CLARITY

A slimmer cab B-pillar and split C-post enhance side and rearward visibility, giving operators a better awareness of their surroundings. Optional side-sliding windows further support crew communication and improve airflow inside the cab.

## SAFETY

Synchronized door wipers clear rain, snow, and debris in unison and sweep below the operator's sightline, enhancing visibility in any weather. Integrated smart cameras and an optional 360° camera provides a bird's-eye view of the in-cab display provide a comprehensive view of the machine and task at hand.

# REAL-TIME INFORMATION FROM CAT EQUIPMENT MANAGEMENT TAKES THE GUESSWORK OUT OF MANAGING YOUR EQUIPMENT

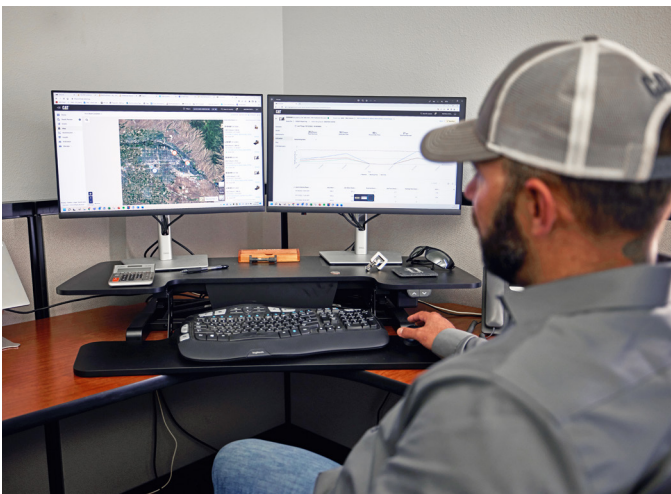
Cat® Equipment Management technologies work together to put equipment information at your fingertips. Get real-time access to information on every machine in your fleet on any jobsite – no matter the size of the operation or the brands of equipment you run.



## VISIONLINK™

Gather and summarize machine telematics and jobsite data from all your equipment – regardless of the manufacturer.\* View actionable information such as idle time, fuel burn, location, total cycles, and more to improve machine efficiency, productivity, and utilization. Access data anywhere via a mobile, tablet, or desktop device – on or off the jobsite.

\*Data field availability can vary by equipment manufacturer. VisionLink™ subscription required. Availability may vary by region. Consult your Cat dealer for more details.



## CAT REMOTE SERVICES\*

A suite of technologies that improve your jobsite efficiency.

- + Remote Troubleshoot allows your Cat dealer to perform diagnostic testing on your connected machine remotely, pinpointing potential issues while the machine is in operation. Remote troubleshooting helps to ensure the technician arrives with the correct parts and tools the first time, eliminating additional trips, to save you time and money.
- + Remote Flash allows you to update onboard software without a technician being present, allowing you to initiate software updates when convenient, increasing your overall operating efficiency.
- + Operator ID requires operators to log in via Passcode or Bluetooth® (Cat Key Fob) at machine startup, helping to deter theft, vandalism, and unauthorized use. It saves settings from the last time an operator was logged in and maintains profiles that were retained during machine software flash updates. Operator IDs are easily managed through the touchscreen and can also be managed remotely and uploaded to the machine through VisionLink.

\*Must be within cell range coverage.



## CAT INSPECT

Cat Inspect is a mobile application that allows you to easily perform digital preventative maintenance checks, inspections, and daily walkarounds. The app includes machine-specific Preventive Maintenance (PM) checklists to perform service intervals as recommended in the Operation and Maintenance Manual. Inspections can easily be integrated with other Cat data systems like VisionLink, so you can keep a close eye on your fleet.

## CAT GRADE ATTACHMENT READY OPTION (ARO)

---

The Attachment Ready Option (ARO) makes it easier to upgrade your machine. It includes sensor-ready mounts that simplify installing Cat Grade 3D and other grade control technologies. ARO also features a Position Sensing Cylinder (PSC) for moldboard side shift and mounts for laser, sonic, and Universal Total Station (UTS).

## CAT GRADE 3D READY

---

Joystick configurations include helpful features like 2D Cross Slope Assist and E-fence safety boundaries. It's ready for a Cat 3D Grade upgrade and comes with the necessary antennas and display. To use the full 3D system, you'll need extra radio gear and local licenses. For help with upgrading, contact your Cat dealer.

## CAT GRADE WITH CROSS SLOPE ASSIST

---

Even a 0.5% slope deviation from target can raise material use by 20%. Cat Grade with Cross Slope Assist auto-controls one blade side, which can boost efficiency up to 50% and cut material by up to 40%. E-fence adds safety by stopping motion if the machine moves outside its set limits.

## CAT GRADE 3D

---

Cat Grade 3D uses GNSS to automate blade movement, helping operators grade faster with better accuracy and less effort. The intuitive touchscreen shows the design plan, and controls are built into the joysticks or levers. No stakes or grade checks equal improved safety.



**USE LESS  
MATERIAL**  
WITH CAT GRADE TECHNOLOGY

## INTUITIVE CAB DESIGN

The redesigned cab is optimized for the operator by providing filtered HVAC systems and other comforts such as cup holder, cell phone holder, Bluetooth® compatibility, and ample storage space.

## VISIBILITY WHERE YOU NEED IT

See more ground during operation with large cab windows and even more with optional cameras for views all around the cab, giving you that extra line of sight and control of material movement.

## CENTRALIZED SERVICE ACCESS POINT

Save time on daily checks with ground-level grouped filters. The engine compartment doors swing wide and some are removable to access service points easily.

## REDESIGNED CHASSIS

New rear chassis features an integrated tag link and modular design to enhance load absorption during ripping and scarifying operations.

## EASY-ACCESS FUEL TANK

Return to work faster with ground-level fueling. The fuel tank is integrated into the front chassis for improved tank protection and better center of gravity.



## GRADE TECHNOLOGIES

Customize technologies from factory with many options for grading and managing your fleet to optimize your productivity.

## ATTACHMENT READY OPTION

Get more work done in less time utilizing Attachment Ready Option (ARO) for Grade technologies.

## GO MASTLESS

Optional 3D Mastless Grade technology eliminates masts in line of sight for a direct view of the moldboard at work.

## SAFETY MATTERS

Meet jobsite safety goals through optional cameras, seat belts, and alerts so you can reach safety milestones.

---

## MAXIMIZE COMPONENT LIFE

Reduce daily greasing requirements on the optional top adjust circle with the optional Cat Circle Saver. This grease fitting is easy to access and maintain. Always keep your circle drive pinion greased with the Cat Circle Saver for maximum lift.

---

## REDUCE DAMAGE

Keep your machine running smoothly in demanding applications with optional guards. Guards defend against potential damage while running the machine for your transmission, under cab components, cab windows, and front axles.

---

## PRESERVE YOUR MACHINE

Protect your pinion drive, circle teeth, and blade lift accumulators from damage with the circle drive slip clutch. The standard slip clutch minimizes damage to machine or obstacles that the moldboard contacts.

SEE YOUR INVESTMENT GO FURTHER  
**DESIGNED TO LAST**





# MORE THAN CUSTOMER VALUE AGREEMENTS

## BUILT AROUND YOUR SUCCESS

When you buy Cat equipment, you get so much more than the machine. You also get the support of a best-in-class dealer network, backed by a range of flexible solutions, technology, tools, and more.

### CUSTOMER VALUE AGREEMENTS

---

A Customer Value Agreement (CVA) from your Cat dealer helps you do more and worry less. A CVA simplifies machine ownership and maintenance, adds the security of expert dealer support, and gives you peace of mind from effective equipment health management.

### REPAIR OPTIONS

---

A broad range of repair options give you choices that work with your needs, budget, and timeline. Every repair is performed by expert Cat technicians. You'll receive smart repair advice, a timely, accurate quote, and service that gets your machine back into action quickly.

### GENUINE CAT PARTS

---

Genuine Cat parts deliver the highest level of reliability and productivity. Order direct from your Cat dealer or shop online at [parts.cat.com](http://parts.cat.com).

### FINANCIAL SERVICES

---

Count on Cat Financial to provide the best finance and extended protection solutions for your business. For more than 30 years, we have helped our customers succeed through financial service excellence. Services to help you save time, save money, and get back on the job.

### GET BACK TO WORK

Services to help you save time, save money, and get back on the job.

#### HYDRAULICS

Whether you choose new, Cat Reman, exchange, or rebuilt hydraulic components, you'll get expert diagnostics, testing, and contamination control. Cat Hose Service offers hoses and couplings for most makes and models.

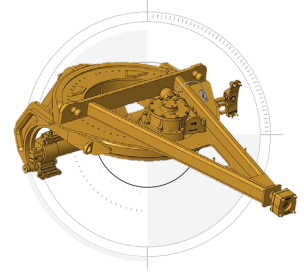
#### CERTIFIED REBUILD

Get a full second machine life at a fraction of the cost of buying new. With upgraded features, safety enhancements, and the latest technologies, your old machine will perform even better than it did when it rolled off the line.

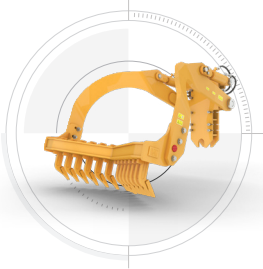
## APPLICATIONS INCLUDE

- + ROAD CONSTRUCTION AND MAINTENANCE
- + SCARIFYING AND SURFACE PREPARATION
- + MATERIAL SPREADING AND SHAPING
- + FINE GRADING AND FINISHING
- + DITCHING AND SLOPE WORK
- + SNOW REMOVAL

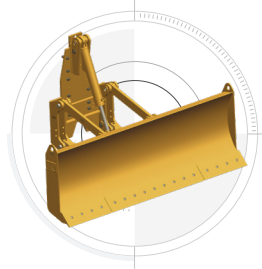
### HIGH PERFORMANCE CIRCLE



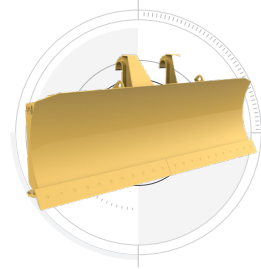
### MID-MACHINE SCARIFIER



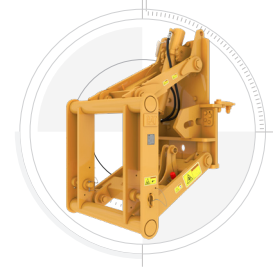
### FRONT BLADE



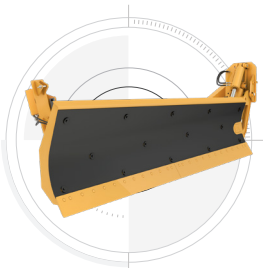
### STRAIGHT PLOW



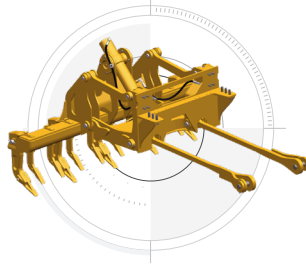
### LIFT GROUPS



### SNOW WINGS



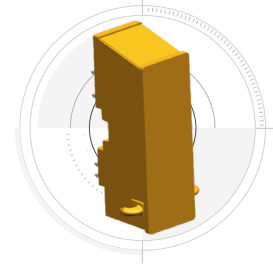
### REAR RIPPER/SCARIFIER



### V-PLOW



### PUSHBLOCK



## INCREASE YOUR PRODUCTIVITY AND PROFIT CAT ATTACHMENTS

Expand the capabilities of your motor grader with a wide selection of Cat® attachments. Engineered to match your machine's weight and horsepower, each attachment delivers optimal performance while maintaining safety and stability.

Cat attachments help you do more with one machine – finish jobs faster, take on more applications, and reduce the need for additional equipment. The result is higher efficiency, lower operating costs, and increased profitability.

# TECHNICAL SPECIFICATIONS

See [cat.com](http://cat.com) for complete specifications.

POWERTRAIN						
	140		150*		160*	
Engine Model	Cat® C7.1		Cat C9.3B		Cat C9.3B	
Emissions	Meets U.S. EPA Tier 4 Final, EU Stage V, Japan 2014 emission standards		Meets U.S. EPA Tier 4 Final and EU Stage V emission standards		Meets U.S. EPA Tier 4 Final and EU Stage V emission standards	
Net Engine Power Range (Non-AWD)	103-169 kW	138-227 hp	99-186 kW	133-249 hp	107-197 kW	143-264 hp
Net Engine Power Range (AWD)	108-190 kW	145-255 hp	104-197 kW	139-264 hp	112-209 kW	150-280 hp
Displacement	7.01 L	427.8 in <sup>3</sup>	9.3 L	567.5 in <sup>3</sup>	9.3 L	567.5 in <sup>3</sup>
Bore	105 mm	4.1 in	115 mm	4.5 in	115 mm	4.5 in
Stroke	135 mm	5.3 in	149 mm	5.9 in	149 mm	5.9 in
Torque Rise (Non-AWD)	29%		38%		42%	
Torque Rise (AWD)	28%		35%		38%	
Maximum Torque	1070 N·m	789.2 lbf·ft	1251 N·m	922.7 lbf·ft	1390 N·m	1025.2 lbf·ft
Maximum Torque (AWD On)	1159 N·m	854.9 lbf·ft	1359 N·m	1002.3 lbf·ft	1466 N·m	1081.3 lbf·ft
Speed @ Rated Power	2,000 rpm		2,000 rpm		2,000 rpm	
Number of Cylinders	6		6		6	
Derating Altitude (Non-AWD)	4500 m	14,764 ft	4500 m	14,764 ft	4500 m	14,764 ft
Derating Altitude (AWD)	3000 m	9,843 ft	3000 m	9,843 ft	3000 m	9,843 ft

\*150 and 160 models not available in Japan

- Advertised power is tested per the specified standard in effect at the time of manufacture
- Net power is tested per ISO 9249, SAE J1349, and EEC 80/1269 standards.
- Net power advertised is the power available at the flywheel when the engine is equipped with fan at minimum speed, air intake system, exhaust system, and alternator.
- The air conditioning system on this machine contains the fluorinated greenhouse gas refrigerant R134a or R1234yf. See the label or instruction manual for identification of the gas.
  - If equipped with R134a (Global Warming Potential = 1430), the system contains 1.6 kg (3.5 lb) of refrigerant which has a CO<sub>2</sub> equivalent of 2.288 metric tonnes (2.521 tons).

WEIGHT						
	140		150		160	
Weight – Lever Configuration Non-AWD	19 027 kg	41,947 lb	19 430 kg	42,836 lb	-	-
Weight – Lever Configuration AWD	19 531 kg	43,058 lb	20 417 kg	45,012 lb	-	-
Weight – Joystick Configuration Non-AWD	19 197 kg	42,322 lb	19 668 kg	43,360 lb	19 853 kg	43,767 lb
Weight – Joystick Configuration AWD	19 629 kg	43,275 lb	20 588 kg	45,389 lb	20 792 kg	45,838 lb

- Typically equipped operating weight is calculated with push block, transmission guard, rear ripper/scarifier, and other equipment.

SERVICE REFILL CAPACITIES				
	140		150/160	
Standard Circle Drive	7 L	1.8 gal	7 L	1.8 gal
High Performance Circle Drive	9.5 L	2.5 gal	9.5 L	2.5 gal
Cooling System	54 L	14.3 gal	50 L	13.2 gal
Diesel Exhaust Fluid Tank	17 L	14.5 gal	40 L	10.6 gal
Engine Crankcase	20 L	5.3 gal	26 L	6.9 gal
Fuel Tank	371 L	98.0 gal	371 L	98 gal
Hydraulic System	173 L	45.7 gal	123 L	32.5 gal
Tandem Housing (each)	70 L	18.5 gal	80 L	21.1 gal
Transmission and Differential	60 L	15.9 gal	60 L	15.9 gal

(Continued on Next Page)

# TECHNICAL SPECIFICATIONS *(CONTINUED)*

See cat.com for complete specifications.

MOLDBOARDS								
Moldboard	12 Foot Moldboard		14 Foot Moldboard		14 Foot Plus Moldboard		16 Foot Moldboard	
Height (Cutting Edges + Moldboard)	556 mm	21.9 in	587 mm	23.1 in	621 mm	24.4 in	622 mm	24.5 in
Width (Cutting Edges + Moldboard)	3658 mm	144.0 in	4267 mm	168.0 in	4267 mm	168.0 in	4877 mm	192.0 in
Thickness	22 mm	0.9 in	22 mm	0.9 in	25 mm	1.0 in	25.4 mm	1.0 in
Arc Radius	413 mm	16.3 in	413 mm	16.3 in	413 mm	16.3 in	413 mm	16.3 in
Throat Clearance, Non-HPC	119 mm	4.7 in	119 mm	4.7 in	85 mm	3.3 in	111 mm	4.4 in
<b>Cutting Edge</b>								
Height	152 mm	6.0 in	203 mm	8.0 in	203 mm	8.0 in	203 mm	8.0 in
Width	1829 mm	72.0 in	2133 mm	84.0 in	2133 mm	84.0 in	2438 mm	96.0 in
Thickness	16 mm	0.6 in	19 mm	0.7 in	19 mm	0.7 in	24 mm	0.9 in
<b>End Bit</b>								
Height	452 mm	17.8 in	452 mm	17.8 in	452 mm	17.8 in	452 mm	17.8 in
Width	152 mm	6.0 in	152 mm	6.0 in	152 mm	6.0 in	152 mm	6.0 in
Thickness	16 mm	0.6 in	16 mm	0.6 in	16 mm	0.6 in	16 mm	0.6 in

DIMENSIONS		
140, 150, AND 160		
Length of Machine – Push Plate to Ripper	10 297 mm	405.4 in
Maximum Height – with Attachments (LVR)	3476 mm	136.9 in
Maximum Height – with Attachments (JOY)	3450 mm	135.8 in
<b>Width</b>		
Outside Front Tires (LVR Non-AWD)	2521 mm	99.3 in
Outside Front Tires (JOY Non-AWD)	2583 mm	101.7 in
Outside Front Tires (LVR AWD)	2667 mm	105.0 in
Outside Front Tires (JOY AWD)	2667 mm	105.0 in

# STANDARD AND OPTIONAL EQUIPMENT

Standard and optional equipment may vary. Consult your Cat® dealer for details.

OPERATOR ENVIRONMENT	STANDARD	OPTIONAL
Cab, base (JOY)	•	
Cab, base (LVR)	•	
Cab storage	•	
CB radio mount bracket with converter		•
Cellphone holder	•	
Cup holder	•	
Heating, ventilation, and air conditioning (HVAC)	•	
Radio ready (JOY)	•	
AM/FM, Bluetooth®, Weatherband		•
Satellite radio		•
DAB radio		•
Rollover protective structure (ROPS) / falling objects protective structure (FOPS)	•	
Screen, rear sun shade		•
Seat belt	•	
Seat belt w/indicator		•
Seat, air suspension	•	
Seat, premium heated and ventilated		•
Wipers, front upper window, door (LVR)	•	
Wipers, front, door (JOY)	•	
Wipers, rear (LVR)		•
Wipers, side windows, rear		•
SAFETY	STANDARD	OPTIONAL
Back-up alarm	•	
Signaling/warning horn	•	
Grab rails	•	
Hydraulic brakes	•	
Operator Presence System	•	
Parking brake	•	
Mirror, rearview	•	
Mirrors, side view		•
POWERTRAIN	STANDARD	OPTIONAL
Eco mode	•	
Cold weather package		•
Cold weather package plus		•
Reversing fan		•

DRAWBAR CIRCLE MOLDBOARD	STANDARD	OPTIONAL
Bottom adjust circle (LVR)	•	
Top adjust circle (JOY)	•	
High Performance Circle with circle saver		•
Circle drive slip clutch	•	
Circle saver, top adjust and bottom adjust		•
Blade lift accumulators		•
Moldboard, 12 foot (standard 140 and 150)	•	
Moldboard, 14 foot (standard 160; optional 140 and 150)		•
SERVICE AND MAINTENANCE	STANDARD	OPTIONAL
Engine service light	•	
Extended life coolant	•	
Ground-level diesel exhaust fluid (DEF) and fuel fill	•	
Grouped location for engine oil and fuel filters	•	
Next generation fluid filters	•	
Service doors, barrel-hinged	•	
Service doors, lower panel toolless removal	•	
TECHNOLOGY	STANDARD	OPTIONAL
Auto-Articulation	•	
Digital blade slope meter (LVR)		•
Attachment Ready Option (ARO) (LVR)		•
Cross Slope Assist (2D) (LVR)		•
Cross Slope Assist: E-Fence, Auto articulation, ARO (2D) (JOY)	•	
Cat Grade 3D Mastless		•
Front Vision		•
Rear Vision		•
Stable Blade		•
Surround Vision (360°)		•
Surround Vision (360°) w/People Detection		•
Tire Pressure Monitoring System (TPMS)		•
VisionLink™		•



オフロード法2014年  
基準適合

For more complete information on Cat products, dealer services and industry solutions, visit us on the web at [www.cat.com](http://www.cat.com).

©2026 Caterpillar. All Rights Reserved.

Materials and specifications are subject to change without notice. Featured machines in photos may include additional equipment. See your Cat dealer for available options.

CAT, CATERPILLAR, LET'S DO THE WORK, VisionLink, their respective logos, Product Link, "Caterpillar Corporate Yellow," the "Power Edge" and Cat "Modern Hex" trade dress as well as corporate and product identity used herein, are trademarks of Caterpillar and may not be used without permission.

AEXQ4504-00 (06-2026)  
Build Number: 16A  
(Aus-NZ, Chile, Colombia,  
Europe, Japan, N Am,Türkiye)

