

D8 XE

TRACK-TYPE TRACTOR



Net Power (1,600 rpm)

ISO 9249/SAEJ1349

259 kW (348 hp)

ISO 9249/SAEJ1349 (DIN)

352 mhp

Operating Weight

Standard

40 100 kg (88,405 lb)

Waste Handler

40 500 kg (89,287 lb)

Cat® C15 Engine meets U.S. EPA Tier 4 Final/EU Stage V/ Korea Stage V/Japan 2014/China Nonroad Stage IV emission standards.



THE CAT® D8 XE

ELECTRIC DRIVE POWERTRAIN

The Cat® next generation D8 XE track-type tractor joins the D6 XE in the electric drive powertrain lineup. Building on the success and reputation of the D6 XE, the D8 XE combines the power of the D8 size class with the fuel and productivity efficiencies expected of electric drive machines. The broadest range of technology features in the industry work together seamlessly to help you make the most of your equipment investment. Common interface and controls from the D5 through D8 make it easy to operate different machine sizes.



TECHNOLOGY FEATURES TO FIT YOUR BUSINESS

The Premium and High Debris cabs are technology-ready. Order technology packages from the factory to meet your needs or easily upgrade later as your work demands it.

- + CAT ASSIST WITH ATTACHMENT READY OPTION (ARO) IS A STANDARD SUITE OF TECHNOLOGY, INCLUDING FEATURES SUCH AS CAT GRADE WITH SLOPE ASSIST™ AND STEER ASSIST, HELPING OPERATORS OF VARIED SKILL LEVELS GET THE JOB DONE FASTER AND EASIER.
- + GRADE 3D WITH ASSIST PACKAGE GIVES YOU ALL THE ASSIST WITH ARO FEATURES, PLUS 3D GRADE AND STEER ASSIST 3D. GET TO DESIGN PLAN FASTER AND WITH LESS OPERATOR EFFORT, SO YOU CAN SAVE TIME, MONEY, AND FUEL.
- + REMOTE CONTROL READY CAB ENABLES DEALER INSTALLATION OF THE CAT COMMAND SYSTEM.



UP TO 10% LOWER FUEL USE¹

The electric drive powertrain, with constant power to the ground and increased steering capability, uses less fuel than a standard lock-up clutch machine.

UP TO 5% LOWER MAINTENANCE COST²

Electric drive machines have fewer moving parts and longer service intervals.

DO MORE WITH XE

Push more material. The D8 XE has 6%³ productivity gains over the D8 powershift machine.

PRODUCTIVITY WITH TECHNOLOGY

A broad range of Assist and Grade technology choices help boost productivity. Assist features reduce operator inputs up to 45%⁴.



¹Fuel consumption improvement based on product testing of D8 XE (22A) vs. D8 (22A) in a composite cycle. Fuel consumption measured using a fuel burn meter. The test was conducted by Caterpillar at Washington, IL in October 2025.

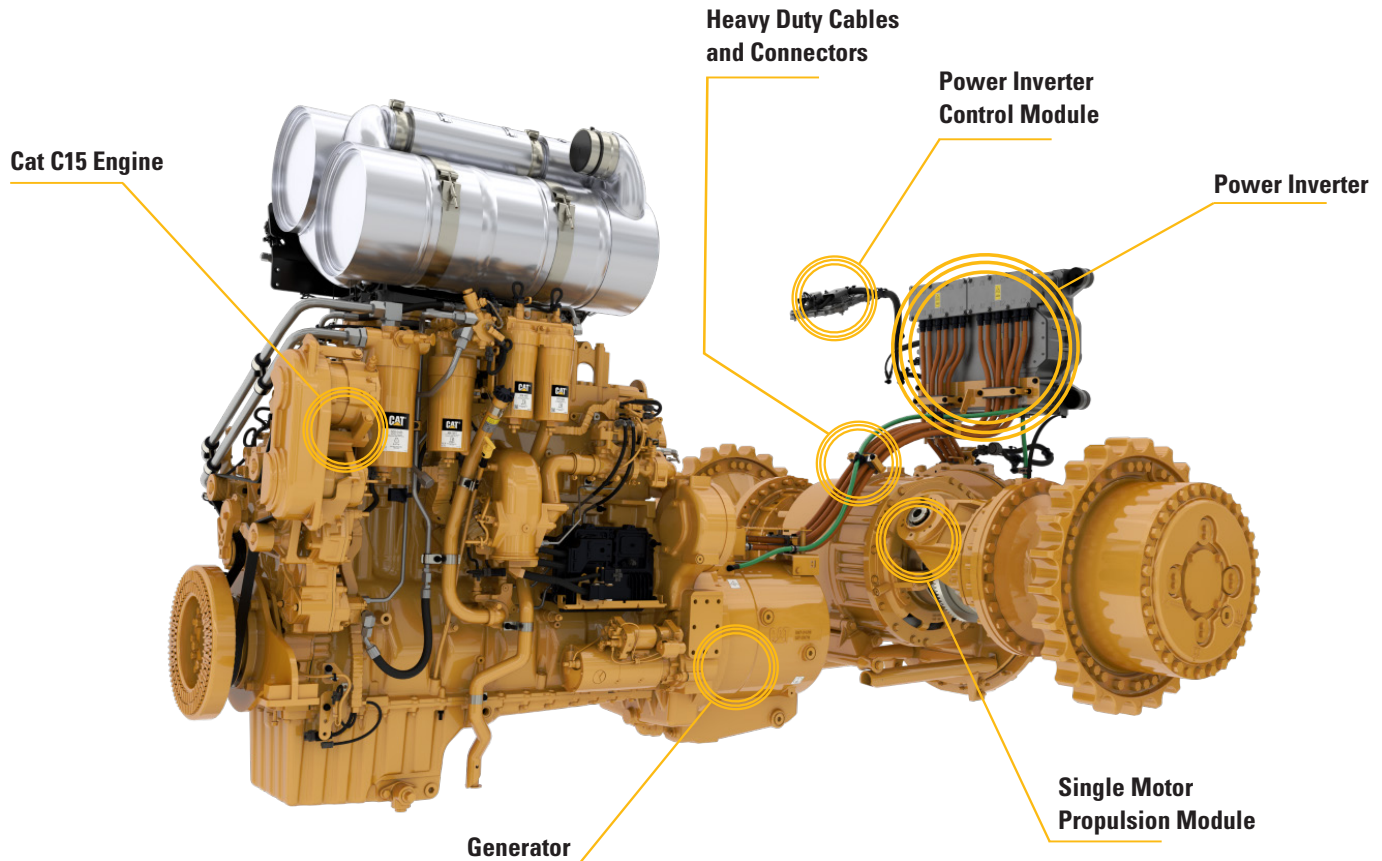
²Maintenance costs based on comparison of D8 (21B) and D8 XE (22A) recommended maintenance interval schedule and recommended component rebuild schedule.

³Productivity improvement based on product testing of D8 XE (22A) vs. D8 (22A) in a composite cycle. Productivity measured as material moved per unit of time and verified by time keeping and a surveying drone. Material moved test conducted by Caterpillar at Washington, IL, in October 2025.

⁴Input reduction based on product testing of a D5 (17B) Next Generation Dozer with and without the use of Assist technology features, in a truck dump spreading in sand application. Test conducted by Caterpillar at Peoria Proving Ground, Washington, IL, in July 2022.

STEP INTO ELECTRIC DRIVE POWERTRAIN

Simply put, the electric drive powertrain converts mechanical engine power into electricity. The power inverter controls electricity flow from the generator to electric motors, which power the final drives. The modularity of the electric drive components make it easy to access, maintain, and repair.



LESS MOVING PARTS

Electric drive has fewer moving parts than a conventional transmission. The reduced number of parts and fluids over time drives up to 5%¹ lower maintenance costs.

REDUCE REBUILD COST

Rebuilding a machine's transmission keeps a reliable machine in the fleet for less than the cost of a replacement. The D8 XE's certified powertrain and hydraulics rebuild is up to 15%² less than the same rebuild for a mechanical transmission.

CONSTANT POWER

Harness the constant power to the ground and added steering capability of this tractor for faster cycle times. Make lock-track pivot turns and counter rotate in gear for the agility needed in tight spaces.

¹ Maintenance costs based on comparison of D8 (21B) and D8 XE (22A) recommended maintenance interval schedule and recommended component rebuild schedule.

² Rebuild costs based on comparison of D8T/D8 (21B) and D8 XE (22A). Recommended rebuild of certified powertrain and hydraulics.

MAINTENANCE MADE EASY UPTIME COUNTS



**GROUND-LEVEL
SERVICE CENTER**



**ELEVATED
SPROCKET, EASY
CLEANOUT**



**FLUID SIGHT
GAUGES**



**GROUPED
MAINTENANCE
POINTS**



**OPTIONAL FAST
FUEL FILL**

SAVE TIME, SAVE MONEY

Grouped service points and ground-level service center for more convenient, regular maintenance. Cab can be removed in 30 minutes if needed. Easy access to maintenance points through the cab floor. Extended intervals for some fluids and filters. Standard reversing fan helps remove debris works while you do to save cleanout and maintenance time. Use the ground-level service center and optional fast fuel fill to complete maintenance from the safety of the ground. Platform with guard rail makes refueling and diesel exhaust fluid (DEF) fill safe and convenient.

OPERATOR HELPERS

BUILT RIGHT IN

Cat Assist with Attachment Ready Option (ARO) is a suite of features that help make work easier. These features automate some blade and steering functions to get the most out of the machine's productivity and efficiency capability. Cat Assist with ARO bundles these features into one standard, productivity-boosting package. Technology-ready packages offer hardware installed on the machine from the factory, only requiring a software license activation for full feature functionality.



NO GPS SIGNAL? NO PROBLEM.

Cat Grade with Slope Assist™ automatically maintains pre-established blade position without a Global Navigation Satellite System (GNSS)/Global Positioning System (GPS) signal – no additional hardware or software needed. For machines with 3D, operators can easily switch back and forth from full 3D automatics to Slope Assist.

Slope Indicate is included in the main machine display and shows side slope and uphill/downhill grades to help operators with slope work.

SMOOTH OPERATOR

Stable Blade works seamlessly with operator inputs to help produce a smoother surface when operating manually.

STAY ON TRACK

Steer Assist automates track and blade tilt steering. Helps reduce operator fatigue by automatically maintaining straight travel with light loads or heavy loads on flat ground and side slopes. Helps reduce steering inputs up to 75%.¹ No GNSS/GPS required.

¹Input reduction based on product testing of a D5 (17B) Next Generation Dozer with and without the use of Assist technology features, in a truck dump spreading in sand application. Test conducted by Caterpillar at Washington, IL in July 2022.

EASY UPGRADES

Attachment Ready Option (ARO) provides wiring and mounting provisions for dealer installation of Grade with 3D, Accugrade, UTS, or other grade control systems.

Grade 3D Ready means the machine is delivered with all the necessary hardware integrated and only needs software activation for full functionality.

KEEP PUSHING FORWARD

These Assist features help you make the most of every pass.

Blade Load Monitor gives you real-time feedback on current load versus the optimal blade load based on your ground conditions. Actively monitors machine load and track slip to help you reach optimal pushing capacity.²

Traction Control automatically reduces track slip to save you time, fuel, and track wear.²

AutoCarry automates blade lift to help you maintain consistent blade load and reduce track slip.²

Auto Rip automates ripper raise/lower and shank in/out to maximize ripping productivity.

²Feature not operational indoors or in areas where a GNSS/GPS signal is not available.

PROVEN ADVANTAGE

WORK HARDER

EASIER

Cat Assist and Grade technologies work in the background to help dozer operators of varied skill levels and are especially beneficial to less experienced operators. While there is no replacement for experience and expertise, training new operators is a long-term investment of time and money. To demonstrate just how much these built-in technology features help, Caterpillar put them to the test.

Two novice operators and two expert operators took on three challenges. Each operator completed three runs of each task – one in manual, one using Assist technology features, and one using Assist plus Cat Grade with 3D. The team measured material moved per hour, material moved per unit of fuel/diesel exhaust fluid (DEF), completion time, final surface quality, and operator inputs.

SLOT DOZING

Productivity and efficiency – novice operators went from 9% lower productivity and efficiency than the experts in manual to matching the experts when using Assist.¹

SIDE SLOPE/STEER ASSIST

Steering inputs – novice and expert operator steering inputs reduced by 75% in forward and by 67% combining forward and reverse.²

All data collected during the same test conducted by Caterpillar at Washington, IL in July 2022.

¹Improvements based on product testing of a D7 (17A) Next Generation Dozer with and without the use of Assist technology in a slot dozing application. Productivity measured as material moved per hour and verified by time keeping and a surveying drone. Efficiency measured as material moved per unit of fuel/Diesel Exhaust Fluid (DEF) and verified by a fuel and DEF burn electronic control module (ECM).

²Input reduction based on product testing of a D5 (17B) Next Generation Dozer with and without the use of Steer Assist in a side slope application. Inputs measured as number of times operator adjusts controls, collected and verified by electronic control module (ECM).

³Time reduction based on product testing of a D5 (17B) Next Generation Dozer with and without the use of Assist technology in a truck dump spreading/grading in sand application.

⁴Surface quality improvements based on product testing of a D5 (17B) Next Generation Dozer with and without the use of Assist technology in a truck dump spreading/grading in sand application. Surface quality measured as standard deviation from known design and verified by a surveying drone.

TRUCK DUMP SPREADING/ GRADING IN SAND

Completion time – novice operators took 49% more time than the experts in manual and narrowed the gap to 17% using Assist and to 9% by adding Grade.³

Blade inputs – novice operator blade inputs were reduced 45% with Assist, and 55% with Assist plus Grade. Expert operator blade inputs were reduced 32% with Assist, and 53% with Assist plus Grade.²

Surface quality – novice operator surface quality improved up to 51% using technology, while expert operator surface quality improved up to 27% using technology. Novice operators using technology produced similar surface quality to the expert operators in manual.⁴

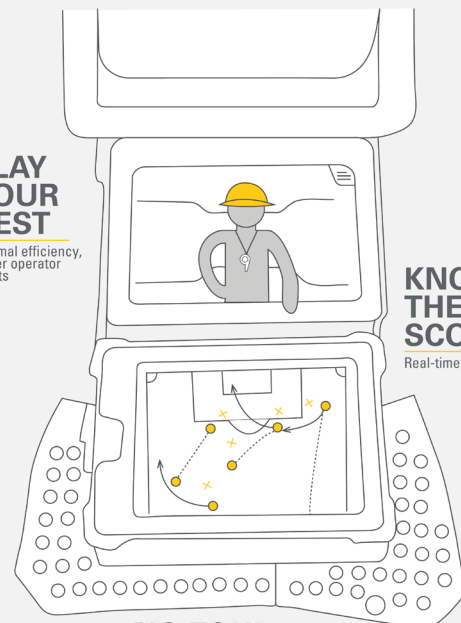
CAT® TECHNOLOGY IS LIKE HAVING A COACH IN THE CAB

PLAY YOUR BEST

Optimal efficiency, fewer operator inputs

KNOW THE SCORE

Real-time Feedback



NO FOUL

Save rework, time, materials



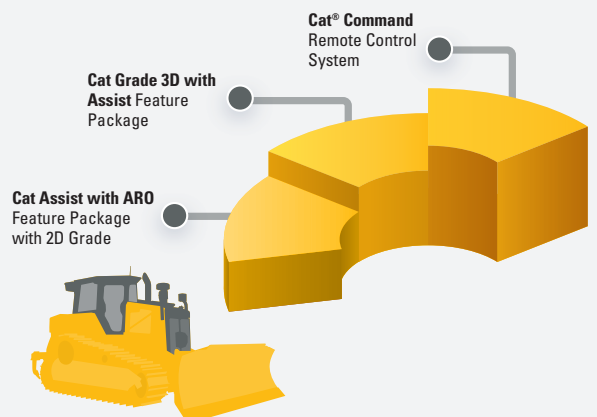
3D GRADE CONTROL

BOOST YOUR PRODUCTIVITY

- + Factory integrated Cat Grade with 3D uses GNSS/GPS to control the blade so you can get to design the plan faster.
- + Grade 3D ready integrates all wiring and hardware for Grade 3D at the factory, saving installation time later. Install the additional license to upgrade to fully functional grade 3D whenever you're ready.
- + Cat Grade with 3D has no masts – low profile antennas are integrated into the cab roof and GNSS/GPS receivers are mounted inside the cab for better protection.
- + Automatically follow guidance lines from design plans with Steer Assist 3D. Stay on curb lines, centerlines, bottom of slope, etc., without operator effort. Track steering is used under light loads and blade tilt steering may be added under heavy loads.
- + Grade operator interface is intuitive and easy to use: 254 mm (10-inch) touchscreen, Android OS platform, operates like a smartphone.
- + Cab is Third-party Grade Control ready, equipped with CAN interface, harness pass-throughs, and mounting features to make it easier to install the grade control system of your choice.
- + All Cat Grade systems are compatible with radios and base stations from Trimble, Topcon, and Leica.
- + Already invested in a grade infrastructure? You can install grade systems from Trimble, Topcon, and Leica onto the machine.

LEVEL UP

CHOOSE THE RIGHT LEVEL OF TECHNOLOGY TO FIT YOUR BUSINESS AND BUDGET. ORDER FROM THE FACTORY OR UPGRADE LATER.

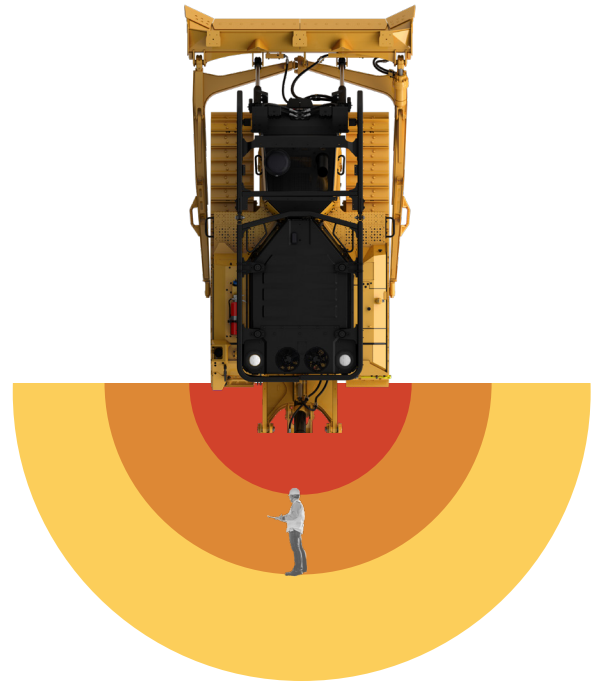


TECHNOLOGY PACKAGES THAT HELP BOOST TIME/MONEY/FUEL SAVINGS

SAFETY TECHNOLOGIES

DETECT AND SEAT BELT REMINDER SYSTEM

Safety technologies deliver the power to see, sense, mitigate, and manage potential hazards by supplementing operator attention, perception, and situational awareness. Some features are available as factory-installed, referred to as "technology-ready." Certain features are not compatible with Cat Command.



SURROUND VISION AND REAR PEOPLE DETECTION

Technology-ready means the hardware is installed on the machine and only needs a software license activation for full feature functionality. Detect ready machines have the hardware installed for Surround Vision and Rear People Detection. This includes three cameras on the left, right, and front of the machine and a smart camera on the rear of the machine. The cameras work together to create the 360° view on the dedicated display. Rear people detection uses the smart camera to detect people behind the machine in the detection zones and audibly and visually alerts the operator.

SEAT BELT ALERT

The seat belt alert audibly and visually prompts operators to stay buckled up. An optional, external lamp can be installed using the dedicated connection point. The lamp mounts to the cab to serve as a clear indicator of the operator's attention to safety.

DISPLAY AND DETECTION ZONES

A full-color 254 mm (10 in) dedicated touchscreen display is mounted above the front cab window displays an always-on, 360° view around the machine. Rearview mirror is relocated on the right-hand B-post. Detect alerts are categorized into three zones behind the machine: awareness (yellow), caution (amber), and critical (red). When the system detects a person/people in the detection zones behind the machine, it sends visual and audible alerts to the operator using the in-cab display

SEAT BELT MISUSE AND INHIBIT

Seat belt misuse identifies situations when the belt is latched but not properly secured over a seated operator (for example, buckled behind the seat). When misuse is recognized, audible and visual alerts activate in the cab. Seat belt inhibit can prevent the machine from traveling if the seat belt is not fastened. This feature supports regional regulatory requirements and is intended to intervene before unsafe operation occurs.



DETECT DISPLAY



REARVIEW MIRROR



SEAT BELT ALERT LAMP



SURROUND VISION CAMERA



PROPER SEAT BELT USE

VISIONLINK™ INTEGRATION

Using VisionLink to capture instances of safety events allows managers to understand seat belt usage, people detections in the critical red zone, and more. This information can be used to identify opportunities for enhanced safety training and creating an overall safer work environment.

NEXT GENERATION DOZER CAB

MAKE YOURSELF COMFORTABLE

Step into a spacious cab that prioritizes operator comfort, visibility, and ease of operation. Integrated Rollover Protective Structure (ROPS) and next generation cab design provides 17%¹ improved visibility. The wide, air suspension seat has multiple adjustments so every operator can adjust to fit their own ergonomic needs.

OPTIONAL WINDOW SHADES

Retractable window shades on the front window, left and right doors, and rear window to help maximize operator comfort.

¹Visibility improvements based on virtual visibility analysis. Comparisons made between the D8 XE (22A) to the D8 (21B).



FACTORY EQUIPPED TO

TAKE OUT THE TRASH



TOUGH ON TRASH

Factory-installed guarding and seals help protect the machine from impact, wrapping, and airborne debris. High-debris cab has impact-resistant polycarbonate doors and dual pane windows to eliminate the need for door screens.

COOLING AND CLEANOUT

High-debris cooling system has automatic reversing fan and slots for easy cleanout. Trash-resistant radiator helps reduce plugging. Laminated thermal shields on the engine and aftertreatment provide added protection in high-debris environments.

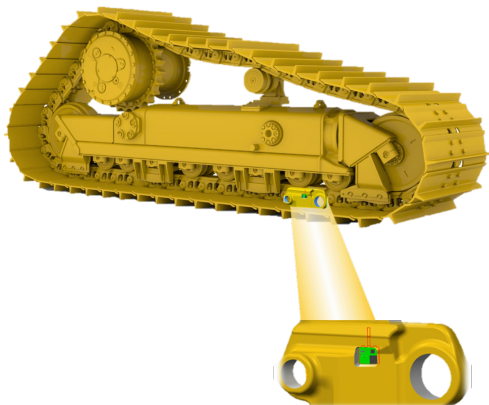
OPTIMIZED FOR PERFORMANCE

Specialized landfill blades, painted black to reduce glare, include a trash rack for more capacity when working in lighter material. Heavy Duty (HD) undercarriage has Kevlar-guarded sealed idlers to help protect against seal damage from wrapping. Center-hole track helps eject debris.

GROUND ENGAGING TOOLS (GET) AND ATTACHMENTS

INCREASE EFFICIENCY AND PRODUCTIVITY

The undercarriage, blade, and ripper endure high wear and tear on a dozer. To ensure uptime, performance, and overall efficiency, make use of the following features designed to optimize each.



CAT TRACK WEAR SENSOR

The Cat Track Wear Sensor (CTWS) is installed in a customized pocket and bore hole in the track link. The “tail” of the CTWS is equipped with wire loops that correspond to varying levels of track wear. As the track link is worn down, the loops are broken and the CTWS communicates wirelessly to the Cat Wear Management System (CWMS) monitored by the dealer. This allows for undercarriage monitoring without manual track link measurements, and the information can be used to minimize downtime by planning maintenance as needed.

Wear Sensor Triggers:

- 40%: Conduct mid-life inspection
- 70%: Signal to measure/order any needed replacement parts
- 100%: Plan to replace



FIRSTCUT™ BLADE CUTTING EDGES

FirstCut cutting edges reduce skating and focus the energy on slicing through instead of breaking up the material. Designed to cut through tough-to-penetrate materials like compacted, rocky or frozen soils, with less ripping. This unique design can provide service life equivalent to legacy cutting edges without needing to flip the edge, requiring less downtime and hardware replacement.



PERFORMANCE RIPPER

The updated design of the performance ripper improves ripping penetration force and productivity, while utilizing the proven parallelogram design. The new frame design allows for better visibility to the pin puller and has remote, grouped grease points for safe ground-level maintenance. A tow point is included to allow for easier retrieval and towing when needed. Optional bolt-on 1,580 kg (3,490 lb) counterweights are available as additional mass on the ripper from. This extra weight provides an increase in maximum penetration force over the previous design. The counterweights are a set of individual plates welded together to allow for lifting as single left- and right-side units. The performance ripper features hammerless CapSure™ GET simplifying maintenance and accelerating installation times. Pairing the performance ripper with AutoRip, a standard technology feature for the D8 XE, consistently improves ripping productivity and technique.

CAT EQUIPMENT MANAGEMENT TAKES THE GUESSWORK OUT OF MANAGING YOUR EQUIPMENT

Getting the most out of your equipment requires hundreds of decisions, every day. Cat Equipment Management gives you access to all the data you need to keep your equipment on the job site and earning money. You can track equipment location and hours, monitor machine use and health, then take informed action that will keep your operation running smoothly, efficiently and profitably.

CAT PRODUCT LINK™ AND VISIONLINK

Product Link™ collects data automatically from your assets – any type and any brand. Access information anytime, anywhere with VisionLink – and use it to make informed decisions that boost productivity, lower costs, simplify maintenance and more. Satellite and/or cellular subscriptions are available.



REMOTE SERVICES

- + **Remote flash** allows for updates to onboard software without a technician being present. Choose a convenient time to initiate the update and avoid downtime.
- + **Remote troubleshoot** enables your Cat dealer to perform diagnostic testing on your connected machine remotely, pinpointing potential issues while the machine is in operation. Remote troubleshooting helps to ensure the technician arrives with the correct parts and tools the first time, eliminating additional trips, saving time and money.
- + **Operator ID** lets you track machine operation by individual operator using the main display and Product Link. It saves machine, display, and any personalized settings when a logged in operator logs out or shuts down the machine. Operator ID can be tied to code start, which provides enhanced protection against theft and unauthorized starts.



REMOTE CONTROL READY

When dozers work in hazardous earthmoving and mining applications, the Command for Dozing option helps improve safety and efficiency. Operators control the machine using a line-of-sight console or a remote operator station. Deep integration with machine systems enables smooth, precise control for maximum efficiency and productivity.

With the line-of-sight console, take advantage of the dozer's built-in operator assist features. The remote operator station also allows full use of Grade and Assist technology features for even greater productivity.



Please consult your Cat dealer for regional availability.

TECHNICAL SPECIFICATIONS

See cat.com for complete specifications.

| ENGINE | | | |
|--------------------|---|--------|--|
| Engine | Cat® C15 | | |
| Emissions | U.S. EPA Tier 4 Final/EU Stage V/ Korea Stage V/Japan 2014/China Nonroad Stage IV | | |
| Net Power | 1,600 rpm | | |
| ISO 9249/SAE J1349 | 259 kW | 348 hp | |
| ISO 9249 (DIN) | 352 mhp | | |

• Net power advertised is the power available at the flywheel when the engine is equipped with fan, air cleaner, muffler, and alternator. Cat diesel engines are required to use ULSD (ultra-low sulfur diesel fuel with 15 ppm of sulfur or less) and are compatible* with ULSD blended with the following lower-carbon intensity fuels** up to:

- 20% biodiesel FAME (fatty acid methyl ester)***
- 100% renewable diesel, HVO (hydrotreated vegetable oil) and GTL (gas-to-liquid) fuels

Refer to guidelines for successful application. Please consult your Cat dealer or "Caterpillar Machine Fluids Recommendations" (SEBU6250) for details.

* While Caterpillar engines are compatible with these alternative fuels, some regions may not allow their use.

** Tailpipe greenhouse gas emissions from lower-carbon intensity fuels are essentially the same as traditional fuels.

*** Engines with no aftertreatment devices are compatible with higher blends, up to 100% biodiesel (for use of blends higher than 20% biodiesel, consult your Cat dealer)

| BLADE | CAPACITY | | WIDTH | |
|---|---------------------|-----------------------|---------|--------|
| Semi-Universal (SU) | 10.3 m ³ | 13.47 yd ³ | 4038 mm | 159 in |
| Universal (U) | 11.8 m ³ | 15.43 yd ³ | 4263 mm | 168 in |
| Angle (A) | 6.1 m ³ | 7.98 yd ³ | 5046 mm | 199 in |
| LGP Semi-Universal (SU) | 9.9 m ³ | 12.95 yd ³ | 4542 mm | 179 in |
| LGP Angle (A) | 6.8 m ³ | 8.89 yd ³ | 5556 mm | 219 in |
| Semi-Universal Landfill with Wear Plate | 21.2 m ³ | 27.73 yd ³ | 4038 mm | 159 in |
| Universal Landfill | 23.4 m ³ | 30.61 yd ³ | 4263 mm | 168 in |
| LGP Semi-Universal Landfill | 22.2 m ³ | 29.04 yd ³ | 4542 mm | 179 in |

| SERVICE REFILL CAPACITIES | | | |
|---------------------------------|--|-------|-----------|
| Fuel Tank | | 528 L | 139.5 gal |
| Diesel Exhaust Fluid (DEF) Tank | | 33 L | 8.7 gal |

| AIR CONDITIONING SYSTEM | |
|---|--|
| <ul style="list-style-type: none"> • The air conditioning system on this machine contains the fluorinated greenhouse gas refrigerant R134a or R1234yf. See the label or instruction manual for identification of the gas. – If equipped with R134a (Global Warming Potential = 1430), the system contains 1.36 kg (2.99 lb) of refrigerant which has a CO₂ equivalent of 1.946 metric tonnes (2.145 tons). | |

| CONFIGURATION | STANDARD | | LGP | | WASTE HANDLER | | WASTE HANDLER LGP | |
|-----------------------------------|-----------|------------|-----------|------------|---------------|------------|-------------------|------------|
| Operating Weight* | 40 100 kg | 88,405 lbs | 38 685 kg | 85,286 lbs | 40 500 kg | 89,287 lbs | 42 145 kg | 92,914 lbs |
| Ground Pressure | 91 kPa | 13.2 psi | 55.5 kPa | 8.1 psi | 85 kPa | 12.3 psi | 60.5 kPa | 8.8 psi |
| Ground Clearance | 620 mm | 24.4 in | 620 mm | 24.4 in | 620 mm | 24.4 in | 620 mm | 24.4 in |
| Width of Standard Track Shoe | 610 mm | 24.0 in | 970 mm | 38.2 in | 660 mm | 26.0 in | 970 mm | 38.2 in |
| Machine Height | 3.53 m | 11'7" ft | 3.53 m | 11'7" ft | 3.65 m | 12'0" ft | 3.65 m | 12'0" ft |
| Length of Machine (without Blade) | 4.76 m | 15'7" ft | 4.76 m | 15'7" ft | 4.76 m | 15'7" ft | 4.76 m | 15'7" ft |
| Track Gauge | 2.08 m | 6'10" ft | 2.34 m | 7'8" ft | 2.08 m | 6'10" ft | 2.34 m | 7'8" ft |
| Width across End Bits | 4.04 m | 13'3" ft | 4.54 m | 14'11" ft | 4.04 m | 13'3" ft | 4.04 m | 13'3" ft |
| Length of Track on Ground | 3.21 m | 10'6" ft | 3.21 m | 10'6" ft | 3.21 m | 10'6" ft | 3.21 m | 10'6" ft |

*Operating weight includes blade, lubricants, coolant, full fuel tank, ROPS/FOPS cab, ripper, and 75 kg (165 lb) operator.

STANDARD AND OPTIONAL EQUIPMENT

Standard and optional equipment may vary. Consult your Cat® dealer for details.

| POWERTRAIN | STANDARD | OPTIONAL |
|--|----------|----------|
| Cat® C15 engine | • | |
| XE Electric Drive Powertrain | • | |
| Final Drives, double reduction – Standard or LGP | • | |
| Final Drives, double reduction – Arctic, Waste | | • |
| Fuel priming pump, electric | • | |

| OPERATOR ENVIRONMENT | STANDARD | OPTIONAL |
|--|----------|----------|
| Fully redesigned cab with Integrated ROPS and FOPS | • | |
| Cab glass capable of withstanding up to 40 psi | | • |
| Full-color 254 mm (10 in) liquid crystal touchscreen display | • | |
| High Definition rearview camera with backup lines | • | |
| Cab-mounted modular HVAC system | • | |
| Electrohydraulic implement and steering controls | • | |
| Cloth seat | • | |
| Deluxe leather heated/ventilated seat | | • |
| Communication radio ready | | • |
| Standard Lights – 6 LED | • | |
| Premium Lights – 12 LED | | • |
| Integrated warning lights | | • |

| BLADES | STANDARD | OPTIONAL |
|---|----------|----------|
| Semi-Universal (SU) | | • |
| Universal (U) | | • |
| Angle (A) | | • |
| LGP Semi-Universal (SU) | | • |
| LGP Angle (A) | | • |
| Semi-Universal Landfill with Wear Plate | | • |
| Universal Landfill | | • |
| LGP Semi-Universal Landfill | | • |

| UNDERCARRIAGE | STANDARD | OPTIONAL |
|---------------------------------|----------|----------|
| Heavy Duty (HDL with DuraLink™) | • | |
| Moderate Service track shoes | • | |
| Extreme Service track shoes | | • |

| HYDRAULICS | STANDARD | OPTIONAL |
|--|----------|----------|
| Independent steering and implement pumps | • | |
| Load-sensing hydraulics | • | |

| CAT TECHNOLOGY | STANDARD | OPTIONAL |
|---|----------|----------|
| Slope Indicate | • | |
| Cat Assist with ARO Package | • | |
| Cat Grade 3D Ready with Assist Package (Hardware Only) | | • |
| Cat Grade 3D with Assist Package | | • |
| Third Party Grade Control Ready Cab | • | |
| Compatibility with radios and base stations from Trimble, Topcon, and Leica | • | |
| Capability to install 3D grade systems from Trimble, Topcon, and Leica | • | |
| Product Link™ – Cellular or Dual Mode | | • |
| Remote Flash/Troubleshoot | • | |
| Cat Track Wear Sensor | | • |
| Grade Connectivity | | • |
| Grade Corrections Radio | | • |
| Machine Security – Passcode | • | |
| Machine Security – Bluetooth® | | • |
| Remote Control Ready | • | |
| Cat Command for Dozing | | • |
| Cat Detect Ready with Surround Vision | | • |
| Cat Detect Ready with Surround Vision and Rear People Detection | | • |

| SERVICE AND MAINTENANCE | STANDARD | OPTIONAL |
|-----------------------------|----------|----------|
| Fast fuel fill | | • |
| Shovel holder | • | |
| Ground-level service center | • | |
| 30-minute cab removal | • | |
| Quick access cab floor | | • |
| Ecology drains | • | |
| High-speed oil change | | • |
| Under hood work light | • | |

| ATTACHMENTS | STANDARD | OPTIONAL |
|-----------------------------------|----------|----------|
| Single-shank ripper | | • |
| Multi-shank ripper | | • |
| Performance Ripper | | • |
| Rear striker box with striker bar | | • |
| Winch | | • |
| Rear counterweight | | • |
| Drawbar | | • |

For more complete information on Cat products, dealer services and industry solutions, visit us on the web at www.cat.com.

© 2026 Caterpillar. All Rights Reserved.

Materials and specifications are subject to change without notice. Featured machines in photos may include additional equipment. See your Cat dealer for available options.

CAT, CATERPILLAR, LET'S DO THE WORK, VisionLink, their respective logos, Product Link, VIMS, "Caterpillar Corporate Yellow," the "Power Edge" and Cat "Modern Hex" trade dress as well as corporate and product identity used herein, are trademarks of Caterpillar and may not be used without permission.
www.cat.com www.caterpillar.com

AEXQ4715-00 (06-2026)
Build Number: 22A
(Aus-NZ, Chile, Colombia,
Europe, Japan, N Am,
S Korea, Türkiye)

