



D8 XE

Track-Type Tractor

Technical Specifications

Configurations and features may vary by region. Please consult your Cat® dealer for availability in your area.

Table of Contents

D8 XE Track-Type Tractor

Specifications	2
Engine	2
D8 XE Drive Train	2
Fluid/Refill Capacities	2
Air Conditioning System	2
Transmission	2
Drawbar Pull	2
Hydraulic Controls	3
Advanced Cabin Filtration	3
Standards	3
Sound Level	3
Rollover Protective Structure (ROPS)/ Falling Object Protective Structure (FOPS)	3

Brakes	3
D8 XE Dimensions	4
Blades	4
D8 XE LGP Dimensions	5
Blades	5
Ripper	6
Winch	6
Track Shoes	6
Dozer Technology Features	7
Cat® Detect for Dozers	8
Cab Options	9

Standard and Optional Equipment	11
Environmental Declaration	14

D8 XE Waste Handler Specialty Configuration

Key Features and Benefits	15
D8 Waste Handler Features	16
Specifications	17
Engine	17
D8 XE Drive Train	17
Fluid/Refill Capacities	17
Air Conditioning System	17
Transmission	17
Drawbar Pull	17
Hydraulic Controls	18
Advanced Cabin Filtration	18

Standards	18
Sound Level	18
Test Method	18
ROPS/FOPS	18
Brakes	18
D8 XE Waste Handler Dimensions	19
D8 XE Waste Handler LGP Dimensions	20
Blades	20
Ripper	21
Winch	21
Track Shoes	21
Standard and Optional Equipment	22

D8 XE Track-Type Tractor Specifications

Engine

Engine Model	Cat® C15	
Emissions	Meets U.S. EPA Tier 4 Final/ EU Stage V/Korea Stage V/ Japan 2014	
Net Power (1,600 rpm)		
ISO 9249/SAE J1349	259 kW	348 hp
ISO 9249 (DIN)	352 mhp	
Maximum Power (1,600 rpm)		
Engine Power: ISO 14396	273 kW	366 hp
Engine Power: ISO 14396 (DIN)	371 mhp	
Bore	137 mm	5.4 in
Stroke	172 mm	6.8 in
Displacement	15.2 L	927.56 in ³

- Net power advertised is the power available at the flywheel when the engine is equipped with fan, air cleaner, muffler, and alternator.
- Advertised power is tested per the specified standard in effect at the time of manufacture.
- No derating required up to 3779 m (12,400 ft) altitude, beyond 3779 m (12,400 ft) automatic derating occurs.
- Cat diesel engines are required to use ULSD (ultra-low sulfur diesel blend with 15 ppm of sulfur or less) and are compatible* with ULSD blended with the following lower-carbon intensity fuels** up to:
 - ✓ 20% biodiesel FAME (fatty acid methyl ester)***
 - ✓ 100% renewable diesel, HVO (hydrotreated vegetable oil) and GTL (gas-to-liquid) fuels
- Refer to guidelines for successful application. Please consult your Cat dealer or “Caterpillar Machine Fluids Recommendations” (SEBU6250) for details.
 - *While Caterpillar engines are compatible with these alternative fuels, some regions may not allow their use.
 - **Tailpipe greenhouse gas emissions from lower-carbon intensity fuels are essentially the same as traditional fuels.
 - ***Engines with no aftertreatment devices are compatible with higher blends, up to 100% biodiesel (for use of blends higher than 20% biodiesel, consult your Cat dealer).

D8 XE Drive Train

Type	Electric Drive	
Electric Drive System	715 V	
Nominal Voltage		

Fluid/Refill Capacities

Fuel Tank	528 L	139.5 gal
Diesel Exhaust Fluid (DEF) Tank	33 L	8.7 gal
Cooling System	96 L	25.4 gal
Engine Crankcase*	43 L	11.4 gal
Powertrain	208 L	54.9 gal
Final Drives (each)	12.5 L	3.3 gal
Roller Frames (each)	47 L	12.4 gal
Pivot Shaft Compartment	32 L	8.5 gal
Hydraulic Tank	69 L	18.2 gal

*with oil filter

Air Conditioning System

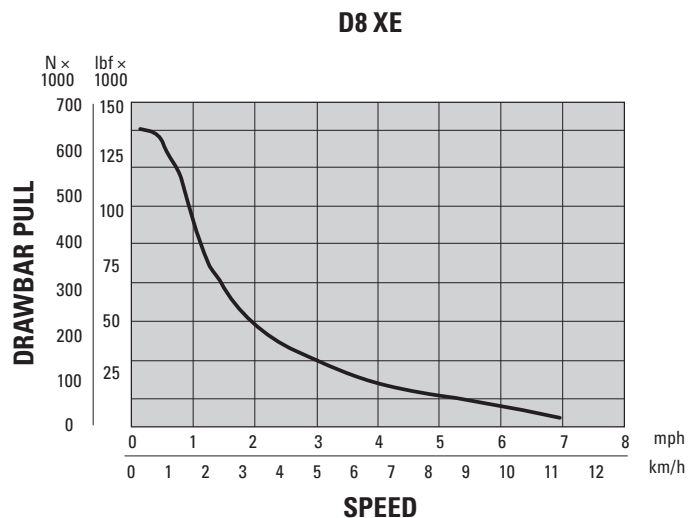
The air conditioning system on this machine contains the fluorinated greenhouse gas refrigerant R134a or R1234yf. See the label or instruction manual for identification of the gas.

If equipped with R134a (Global Warming Potential = 1430), the system contains 1.36 kg (2.99 lb) of refrigerant which has a CO₂ equivalent of 1.946 metric tonnes (2.145 tons).

Transmission

1.0 Forward	3.6 km/h	2.24 mph
1.5 Forward	4.9 km/h	3.02 mph
2.0 Forward	6.5 km/h	4.06 mph
2.5 Forward	9.2 km/h	5.72 mph
3.0 Forward	11.7 km/h	7.23 mph
1.0 Reverse	3.6 km/h	2.24 mph
1.5 Reverse	4.9 km/h	3.02 mph
2.0 Reverse	6.5 km/h	4.06 mph
2.5 Reverse	9.2 km/h	5.72 mph
3.0 Reverse	11.7 km/h	7.23 mph

Drawbar Pull



NOTE: Usable pull will depend on traction and weight of machine.

D8 XE Track-Type Tractor Specifications

Hydraulic Controls

Bulldozer Relief Valve Setting	32 500 kPa	4,714 psi
Maximum Operating Pressure		
Implement	24 000 kPa	3,481 psi
Steering	42 000 kPa	6,092 psi
Tilt Cylinder	24 000 kPa	3,481 psi
Lift Cylinder	24 000 kPa	3,481 psi
Ripper (Lift)	24 000 kPa	3,481 psi
Ripper (Pitch)	24 000 kPa	3,481 psi
Winch	24 000 kPa	3,481 psi
Pump		
Pump Type	Piston-type, Variable Displacement	
Pump Output (Steering)	370 L/min	98 gal/min
Pump Output (Implement)	243 L/min	64 gal/min
Tilt Cylinder Rod End Flow	130 L/min	34 gal/min
Tilt Cylinder Head End Flow	170 L/min	45 gal/min

- Steering flow numbers measured at 1,700 rpm engine speed.
- Implement flow numbers measured at 1,400 rpm engine speed.
- Electro-hydraulic pilot valve assists operations of ripper and dozer controls. A standard hydraulic system includes four valves.
- Complete system consists of pump, tank, filter, oil cooler, valves, lines, and control levers.

Advanced Cabin Filtration

Operator Cabin

- Distributed heating, ventilating, and air-conditioning (HVAC) ducting with automatic temperature control and blower speed provides ultimate operator comfort with less user input.
- Reduced maintenance of the condenser core with automatic reversing fans.
- Cat® Advanced Cabin Filtration is standard.

Cat Advanced Cabin Filtration

- Operator protection from respirable particulate (0.3-10-micron size).
- Sustainably pressurized cab (U.S. Silica compliant).
- Reduced maintenance with longer life, high efficiency filters.
- Protection for all cabin components: electronics, etc.
- Helps meet U.S. Occupational Safety and Health Administration Silica Rule Table 1 requirements for operator cabs.
- Multi-tiered filter offerings for optional efficiency upgrades. Contact Cat dealer for availability.
 - MERV 16 – Standard Equipment
 - HEPA
 - Activated Carbon + HEPA
 - ABEK1 + HEPA

Standards

Sound Level Information

- Hearing protection may be needed when the machine is operated with an open operator station, in a noisy environment, with a cab that is not properly maintained, or when the doors and windows are open for extended periods of time.

Sound Level	Test Method	
Operator Sound Pressure Level	78 dB(A)*	“ISO 6396:2008” ⁽¹⁾
Exterior Sound Pressure Level	113 dB(A)*	“ISO 6395:2008” ⁽²⁾

*Including machines required to meet applicable regional regulations of Ukraine, United Kingdom, and countries that adopt the “EU Directives”

- ⁽¹⁾The measurement was conducted at 70% of the maximum engine cooling fan speed. The sound level may vary at different engine cooling fan speeds. The measurement was conducted with the cab doors and the cab windows closed. The cab was properly installed and maintained.
- ⁽²⁾The measurement was conducted at 70% of the maximum engine cooling fan speed. The sound level may vary at different engine cooling fan speeds.
- The sound levels listed above include both measurement uncertainty and uncertainty due to production variation.

Rollover Protective Structure (ROPS)/ Falling Object Protective Structure (FOPS)

- ROPS meets the following criteria: ISO 3471:2008.
- FOPS meets the following criteria: ISO 3449:2005 Level II.

Brakes

- Brakes meet the standard ISO 10265:2008.

D8 XE Track-Type Tractor Specifications

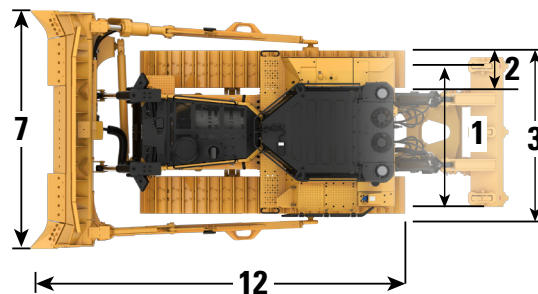
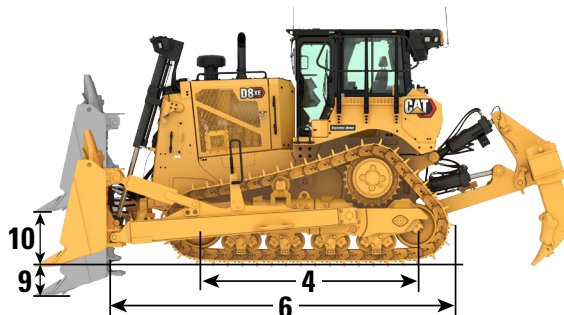
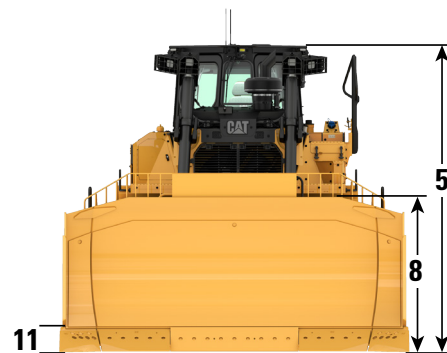
D8 XE Dimensions

Operating Weight*	40 100 kg	88,405 lb
Shipping Weight**	35 130 kg	77,448 lb
Ground Pressure (ISO 16754)	91.0 kPa	13.20 psi
Undercarriage	44 Sections with 8 Bottom Rollers	
1 Track Gauge	2.08 m	6'10"
2 Width of Track Shoe (Standard)	610 mm	24 in
3 Width of Tractor (without trunnions)	2.79 m	9'2"
4 Length of Track on Ground	3.21 m	10'6"
Ground Contact Area (ISO 16754)	4.32 m ²	46.5 ft ²
Grouser Height (Extreme Service)	84 mm	3.3 in
Ground Clearance	0.62 m	2'0"
5 Machine Height*** (Tip of Grouser to top of Product Link Antenna)	3.53 m	11'7"
Top of Cab	3.52 m	11'7"
Top of Guardrail	3.39 m	11'1"
6 Length of Basic Tractor	4.76 m	15'7"
Add the following to the total length of the machine when these attachments are installed.		
Blade (SU)	1.42 m	4'8"
Drawbar	0.36 m	1'2"
Drawbar with Counterweight	0.39 m	1'3"
Single Shank [SS] Ripper (with tip at ground line and shank pin in middle hole)	1.85 m	6'1"
Multi-Shank [MS] Ripper (with tip at ground line and shank pin in top hole)	1.85 m	6'1"
Waste Striker Box (includes three counterweights)	0.72 m	2'4"
Winch	0.78 m	2'7"

*Operating weight includes blade, lubricants, coolant, full fuel tank, ROPS/FOPS cab, ripper, and 75 kg (165 lb) operator.

**Shipping weight includes lift cylinders, lubricants, coolant, 10% fuel, ROPS/FOPS cab, and ripper.

***Machine height from tip of grouser to top of Product Link™ Antenna. For sweeps, add 60 mm (2.4 in) to overall machine height. With Super Extreme Service Track, add 10 mm (0.4 in). When Cat Grade with 3D antennas are installed there is no added machine height.



NOTE: Standard model shown for reference.

Blades

Type	Semi-Universal (SU)		Universal (U)		Angle (A)	
Capacity (ISO 9246)	10.3 m ³	13.47 yd ³	11.8 m ³	15.43 yd ³	6.1 m ³	7.98 yd ³
7 Width across End bits	4038 mm	159 in	4263 mm	167.8 in	5046 mm	198.7 in
Width without End bits	3948 mm	155.4 in	4164 mm	163.9 in	4772 mm	187.9 in
8 Height	1747 mm	68.8 in	1732 mm	68.2 in	1312 mm	51.7 in
9 Dig Depth ¹	576 mm	22.7 in	570 mm	22.4 in	625 mm	24.6 in
10 Lift Height ¹	1246 mm	49.1 in	1232 mm	48.5 in	1323 mm	52.1 in
11 Maximum Tilt at Blade Corner ¹	573 mm	22.6 in	593 mm	23.3 in	754 mm	29.7 in
Maximum Tilt Angle ¹	8.5°		8.5°		8.8°	
Pitch Adjustment ²	±3.5°		±3.5°		0°	
12 Length of Machine with Blade (SS Ripper, tip on ground)	7.91 m	25'11"	8.23 m	27'0"	8.02 m	26'4"
Blade Weight (blade + push arms installed and dozer installation)	4539 kg	10,007 lb	5057 kg	11,149 lb	5469 kg	12,057 lb

¹Single tilt configuration with blade in neutral tilt position

²Dual tilt configuration

D8 XE Track-Type Tractor Specifications

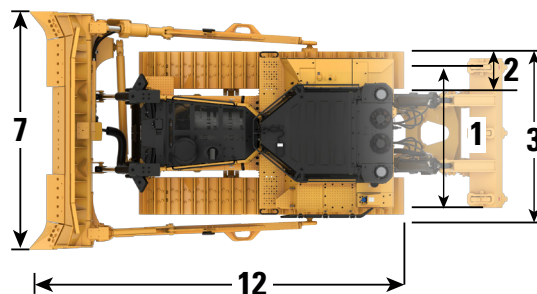
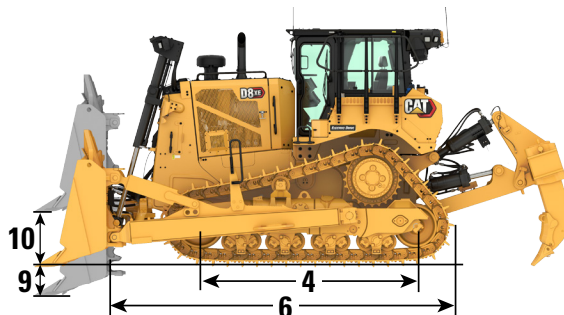
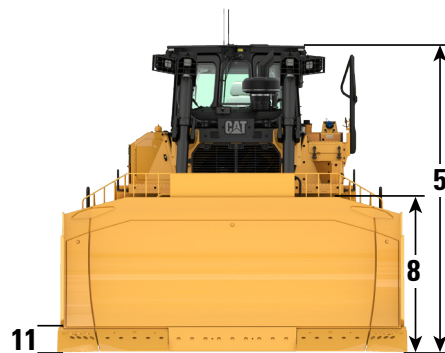
D8 XE LGP Dimensions

Operating Weight*	38 685 kg	85,286 lb
Shipping Weight**	33 410 kg	73,656 lb
Ground Pressure (ISO 16754)	55.5 kPa	8.05 psi
Undercarriage	44 Sections with 8 Bottom Rollers	
1 Track Gauge	2.34 m	7'8"
2 Width of Track Shoe (Standard)	970 mm	38.2 in
3 Width of Tractor (without trunnions)	3.30 m	10'10"
4 Length of Track on Ground	3.21 m	10'6"
Ground Contact Area (ISO 16754)	6.84 m ²	73.63 ft ²
Grouser Height (Moderate Service)	84 mm	3.3 in
Ground Clearance	0.62 m	2'0"
5 Machine Height*** (Tip of Grouser to top of Product Link Antenna)	3.53 m	11'7"
Top of Cab	3.52 m	11'7"
Top of Guardrail	3.39 m	11'1"
6 Length of Basic Tractor	4.76 m	15'7"
Add the following to the total length of the machine when these attachments are installed.		
Blade (SU LGP)	1.36 m	4'5"
Drawbar	0.36 m	1'2"
Drawbar with Counterweight	0.39 m	1'3"
Multi-Shank Ripper (with tip at ground line and shank pin in top hole)	1.85 m	6'1"
Waste Striker Box (includes three counterweights)	0.72 m	2'4"
Winch	0.78 m	2'7"

*Operating weight includes blade, lubricants, coolant, full fuel tank, ROPS/FOPS cab, drawbar, and 75 kg (165 lb) operator.

**Shipping weight includes lift cylinders, lubricants, coolant, 10% fuel, ROPS/FOPS cab, and drawbar.

***Machine height from tip of grouser to top of Product Link Antenna. For sweeps, add 64 mm (2.5 in) to overall machine height. With Super Extreme Service Track, add 10 mm (0.4 in). When Cat Grade with 3D antennas are installed there is no added machine height.



NOTE: Standard model shown for reference.

Blades

Type	LGP Semi-Universal (SU)		LGP Angle (A)	
Capacity (ISO 9246)	9.9 m ³	12.95 yd ³	6.8 m ³	8.89 yd ³
7 Width across End bits	4542 mm	178.8 in	5556 mm	218.7 in
Width without End bits	4450 mm	175.2 in	5282 mm	207.95 in
8 Height	1626 mm	64 in	1312 mm	51.7 in
9 Dig Depth ¹	575 mm	22.6 in	625 mm	24.6 in
10 Lift Height ¹	1227 mm	48.31 in	1323 mm	52.09 in
11 Maximum Tilt at Blade Corner ¹	556 mm	21.9 in	729 mm	28.7 in
Maximum Tilt Angle ¹	7.3°		7.7°	
Pitch Adjustment ²	±4.3°		0°	
12 Length of Machine with Blade (with drawbar)	6.41 m	21'0"	6.59 m	21' 7"
Blade Weight (blade + push arms installed and dozer installation)	4848 kg	10,688 lb	5714 kg	12,597 lb

¹Single tilt configuration with blade in neutral tilt position

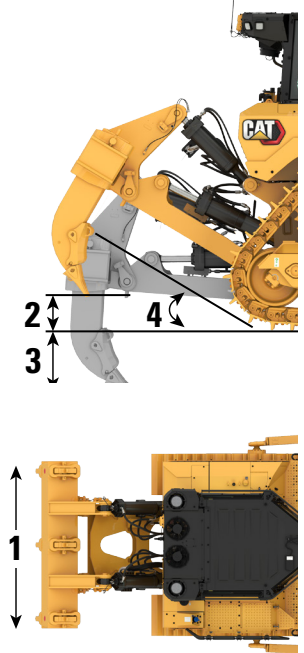
²Dual tilt configuration

D8 XE Track-Type Tractor Specifications

Ripper

Type	Single-Shank, Adjustable Parallelogram		Single-Shank, Adjustable Parallelogram, with Counterweight		Multi-Shank, Adjustable Parallelogram	
Number of Pockets	1		1		3	
Weight with One Shank	4032 kg	8,889 lb	5605 kg	12,357 lb	4024 kg	8,871 lb
Weight with Three Shanks	–	–	–	–	4718 kg	10,401 lb
Weight, Standalone Shank	410 kg	904 lb	410 kg	904 lb	347 kg	765 lb
1 Carriage Width	1443 mm	56.8 in	1492 mm	58.7 in	2465 mm	97 in
2 Maximum Tip Clearance, Shank-In	626 mm	24.6 in	626 mm	24.6 in	626 mm	24.6 in
3 Maximum Penetration	1136 mm	44.7 in	1136 mm	44.7 in	782 mm	30.8 in
4 Maximum Ramp Angle, Shank-In	29.8°		29.8°		30.4°	
Maximum Penetration Force ¹	130.6 kN	29,360 lb	146.1 kN	32,845 lb	129 kN	29,000 lb
Maximum Pryout Force ¹	247.4 kN	55,618 lb	226.1 kN	50,829 lb	248.4 kN	55,843 lb

¹Measured with one shank, vertical
Values above do not include the weight of hydraulic hoses or mounting hardware.



Winch

Model	PA140	
Weight ²	2210 kg	4,700 lb
Oil Capacity	15 L	4.0 gal
Increased Tractor Length	781 mm	30.7 in
Winch Length	1614 mm	63.5 in
Winch Case Width	1226 mm	48.3 in
Drum Width	332 mm	13.1 in
Flange Diameter	610 mm	24.0 in
Maximum Recommended Drum Capacity ³		
Recommended Cable Size	29 mm	1.125 in
Optional Cable Size	32 mm	1.25 in
Drum Capacity		
Recommended Cable Length	56 m	183'9"
Optional Cable	36 m	118'1"

• PA140 – Variable speed, hydraulically driven, dual braking system, three roller fairlead.

²Approximate weight includes winch, mounting bracket and hardware, and standard wire rope.

³Per SAE J706

Track Shoes

Some track shoes not available in all regions. Consult your Cat dealer for details.

Heavy Duty (HD)	Standard			LGP
	610 mm (24 in)	660 mm (26 in)	710 mm (28 in)	965 mm (38 in)
Moderate Service	✓	✓	✓	✓
Extreme Service	✓	✓	✓	✓
Super Extreme Service	✓			
Moderate Service Trapezoidal			✓	
Extreme Service Trapezoidal	✓	✓	✓	✓
Super Extreme Service Trapezoidal		✓		

D8 XE Track-Type Tractor Specifications

Dozer Technology Features

Assist technology features help operators of varied experience levels get the job done faster and more accurately. Grade and Command offering help further enhance your productivity, efficiency and jobsite safety.

The cab is Third-Party Grade Control Ready, equipped with CAN interface, harness pass-throughs, and mounting features to make it easier to install the grade control system of your choice.

Technology features apply to all configurations.

Cat® Assist with ARO

Attachment Ready Option (ARO)	ARO provides wiring and mounting provisions for dealer installation of Grade with 3D, AccuGrade, UTS, or other grade control systems.
Cat Grade with Slope Assist™	Slope Assist automatically maintains pre-established blade position without a Global Navigation Satellite System (GNSS)/Global Positioning System (GPS) signal – no additional hardware or software needed. For machines with 3D, operators can easily switch back and forth from full 3D automatics to Slope Assist.
Steer Assist	Steer Assist automates track and blade tilt steering. Helps reduce operator fatigue by automatically maintaining straight travel with light loads or heavy loads on flat ground and cross slopes. No GNSS/GPS required.
Stable Blade	Stable Blade works seamlessly with operator inputs to help produce a smoother surface when operating manually.
Slope Indicate	Slope Indicate is included in the main machine display and shows side slope and uphill/downhill grades to help operators with slope work.
Blade Load Monitor	Blade Load Monitor gives you real-time feedback on current load versus the optimal blade load based on your ground conditions. Actively monitors machine load and track slip to help you reach optimal pushing capacity. ¹
Traction Control	Traction Control automatically reduces track slip to save you time, fuel, and track wear. ¹
AutoCarry™	AutoCarry automates blade lift to help you maintain consistent blade load and help reduce track slip. ¹
AutoRip	AutoRip automates ripper raise/lower and shank in/out to maximize ripping productivity and reduce operator fatigue. ¹

Cat Grade 3D Ready (Hardware Only)

Includes all features from Cat Assist with ARO listed above, plus:

Cat Grade with 3D (hardware only)	Factory-integrated Cat Grade with 3D uses GNSS/GPS to control the blade so you can get to design plan faster. Low profile antennas are integrated into the cab roof and GNSS/GPS receivers are mounted inside the cab for better protection. ²
Dedicated Touchscreen Grade Display	Full-color Grade operator interface is intuitive and easy to use. The 254 mm (10 in) touchscreen uses an Android OS platform and operates like a smart phone.

NOTE: Grade 3D Ready option requires additional license purchase and installation to upgrade to a fully functional Grade 3D system. Consult your Cat dealer for more information.

Cat Grade 3D with Assist

Includes all features from Cat Grade 3D Ready (Hardware Only) listed above, plus:

Steer Assist 3D	Automatically follow guidance lines from site design plans (or Infield designs) under light load or heavy load. ²
-----------------	--

NOTE: Includes required licenses and software.

Cat Command/Remote Control

Remote Control Ready Cab (Standard)	Cab is Remote Control Ready from the factory with external connector for dealer installation of the Cat Command remote control system.
Command for Dozing ² (Optional)	Cat Command remote control technology provides full dozer maneuverability from a safe distance.

¹Feature not operational indoors or in areas where a GNSS/GPS signal is not available.

²Requires Software Enabled Attachment (SEA) installation when not configured from the factory.

Note: Grade and Assist technologies, except Slope Indicate, Blade Load Monitor, and Traction Control, are not compatible with angle or specialty blades. Please consult your Cat dealer for details.

D8 XE Track-Type Tractor Specifications

Cat® Detect for Dozers

Cat Detect for Dozers deliver the power to see, sense, and manage potential hazards by supplementing operator attention, perception, and situational awareness. Combined with the Seat Belt System designed to promote proper seat belt use by monitoring behavior and responding when it detects improper use. These features are available from the factory; however, Premium and High Debris cabs are equipped with the internal wiring to enable easy upgrade at the dealer. Certain features may not be compatible with Cat Command. Consult your Cat dealer for details.

See	
Rear Vision	Rearview camera shows on primary display and automatically switches to full screen when machine is placed in reverse gear. Guide markings display on the image to help operators visualize their machine's path and proximity to objects.
Surround Vision	Rear camera is upgraded to a Smart camera (People Detection Ready), with the addition of three more cameras on the front and sides of the machine. Full-color, 254 mm (10 in) dedicated touchscreen display mounted above the front cab window displays an always-on 360° view around the machine. Rearview mirror is relocated to the right-hand B-post.

NOTE: Rear smart camera requires additional license purchase and installation to upgrade to fully functional Rear People Detection.

Sense	
Seat Belt System	<p>Seat Belt Alert – Audibly and visually prompts operators to stay buckled up. An optional external lamp can be installed using the dedicated connection point. The lamp mounts to the cab to serve as a clear indicator of the operator's attention to safety.</p> <p>Seat Belt Misuse – Identifies situations where the belt is latched but not properly secured over a seated operator (for example, buckled behind the seat). When misuse is detected, audible and visual alerts activate in the cab.</p> <p>Seat Belt Inhibit – Can prevent the machine from traveling if the seat belt is not fastened. This feature supports regional regulatory requirements and is intended to intervene before unsafe operation occurs.</p>
Rear People Detection	People detection empowers operators by delivering actionable information at the right time. When the system detects a person/people in the detection zones behind the machine, it sends visual and audible alerts to the operator using the in-cab display. Detect alerts are categorized into three zones behind the machine: critical (red), caution (amber), and awareness (yellow). Detection will occur up to 8 meters (26 feet) behind and to the sides of machine at low speeds and will extend at higher speeds.
Detect External Alarm Ready	The machine is equipped with the wiring to install an external alarm to audibly alert anyone around the machine with the same alerts the operator hears in the cab.

NOTE: Includes required licenses and software.

Mitigate	
Reverse Motion Inhibit	Prevents the machine from going into either forward or reverse gear when machine is stationary and there is an active detection in the critical (red) zone behind the machine. Movement will also be inhibited if the operator is trying to counter-rotate the machine.

Manage	
VisionLink™	VisionLink safety features give visibility to leading indicators that provide business insights through the power of data analytics. Safety events such as a person detection or seat belt misuses are communicated to VisionLink, allowing users to visualize them by site, machine, or time to gain deeper insights and inform continuous improvement.

Cab Options

	Premium	High Debris
One piece cab, sound suppressed	●	●
Integrated roll over protection IROPS/FOPS	●	●
Cab-mounted modular HVAC system	●	●
Laminated safety glass	●	●
Polycarbonate glass doors	X	●
Sliding side windows	●	X
Solid side windows	X	●
Protective screen ready	●	●
10-inch (254 mm) touchscreen display	●	●
Cloth seat with mechanical adjustable lumbar support	●	●
Heated and ventilated leather seat with air adjust lumbar support	○	○
Four cupholders	●	●
Engine decelerator and brake pedals	●	●
Adjustable armrests and machine controls	●	●
Electro-hydraulic implement and steering controls	●	●
Advanced Cabin Filtration	●	●
Powered air precleaner	○	○
Adjustable footrests	●	●
Tool-less removeable cab floor plate	○	○
Glovebox	●	●
Lunchbox storage	●	●
Machine Security System	●	●
Mirror, rearview	●	●
Operator Presence Switch	●	●
Seat belt, retractable, 76mm (3 inch)	●	●
Four zone wipers with intermittent speed	●	●
Two 12VDC outlets	●	●
AM/FM radio with Bluetooth, USB, and AUX inputs	○	○
AM/FM/DAB+ radio with Bluetooth, USB, and AUX inputs*	○	○

● Standard ○ Optional X Not available

*Europe Only

(Continued on next page)

D8 XE Cab Options

Cab Options *(continued)*

	Premium	High Debris
Microphone	<input type="radio"/>	<input type="radio"/>
Dual USB Charge Port	<input checked="" type="radio"/>	<input checked="" type="radio"/>
Operator Profile Button	<input checked="" type="radio"/>	<input checked="" type="radio"/>
Cab window shades	<input type="radio"/>	<input type="radio"/>
Rear camera	<input checked="" type="radio"/>	<input checked="" type="radio"/>
Surround Vision w/ Detect	<input type="radio"/>	<input type="radio"/>
Surround Vision w/ Detect Ready	<input type="radio"/>	<input type="radio"/>
Surround Vision Ready	<input checked="" type="radio"/>	<input checked="" type="radio"/>
Detect Ready	<input checked="" type="radio"/>	<input checked="" type="radio"/>
CB Radio Ready	<input type="radio"/>	<input type="radio"/>
Emergency hammer	<input type="radio"/>	<input type="radio"/>
Protective rear screen, fixed	<input type="radio"/>	<input type="radio"/>
Protective rear screen, hinged	<input type="radio"/>	<input type="radio"/>
Protective side screens, hinged	<input type="radio"/>	<input type="radio"/>
Beacon light	<input type="radio"/>	<input type="radio"/>
HVAC quick couplings	<input checked="" type="radio"/>	<input checked="" type="radio"/>
Automatic Temperature Control	<input checked="" type="radio"/>	<input checked="" type="radio"/>

Standard
 Optional
 X Not available

Standard and Optional Equipment

Standard and optional equipment may vary. Consult your Cat® dealer for details. For cab details, refer to page 9.

	Standard	Optional		Standard	Optional
POWERTRAIN			CAT TECHNOLOGY		
Cat® C15 engine	✓		Cat Slope Indicate	✓	
XE Electric Drive Powertrain	✓		Cat Assist with ARO Package*	✓	
Aftercooler, air-to-air (ATAAC)	✓		Cat Grade 3D Ready with Assist Package Hardware Only)*		✓
Brakes, Extreme Service		✓	Cat Grade 3D with Assist Package*		✓
Coolant, extended life	✓		Third-Party Grade Control Ready Cab	✓	
Diesel exhaust fluid (DEF) system – electronic fill indicator, heated lines/tank	✓		Compatibility with radios and base stations from Trimble, Topcon, and Leica	✓	
Differential steering	✓		Capability to install 3D grade systems from Trimble, Topcon, and Leica	✓	
Engine air filter with electronic service indicator	✓		Product Link™ – Cellular	✓	
Engine air pre-cleaner with dust ejection	✓		Product Link™ – Dual Mode		✓
Engine air pre-cleaner with screen and dust ejector		✓	Remote Flash/Troubleshoot	✓	
Engine with thermal shield		✓	Cat Track Wear Sensor	✓	
Engine idle shutdown	✓		Grade Connectivity		✓
Final Drives, double reduction – Standard or LGP	✓		Grade Corrections Radio		✓
Final Drives, double reduction – Arctic, Waste		✓	Machine Security – Passcode	✓	
Fuel water separator	✓		Machine Security – Bluetooth®		✓
Fuel priming pump, electric	✓		Remote Control Ready	✓	
Fan, hydraulic demand	✓		Cat Command for Dozing		✓
Fan, auto reversing	✓		Cat Detect Ready with Surround Vision**		✓
Oil change system, high speed		✓	Cat Detect Ready with Surround Vision and Rear People Detection**		✓
Radiator, aluminum bar plate with debris resistant cores	✓				
High performance single plane cooling system	✓				
Sound Suppression		✓			
Starting Aid, automatic ether	✓				
Starting Aid, jacket water heater (110V or 220V)		✓			

*Refer to page 7 for technology package details.

**Refer to page 8 for Cat Detect package details.

(continued on next page)

D8 XE Standard and Optional Equipment

Standard and Optional Equipment *(continued)*

Standard and optional equipment may vary. Consult your Cat dealer for details. For cab details, refer to page 9.

	Standard	Optional		Standard	Optional
UNDERCARRIAGE			PUSH ARMS		
Standard or Low Ground Pressure (LGP) undercarriage	✓		Standard	✓	
Heavy-duty with Positive Pin Retention (PPR) undercarriage – 44 section track, sealed and lubricated, single grouser shoes (now includes extended life bushings)	✓		Extreme		✓
Waste undercarriage		✓	HYDRAULICS		
Arctic undercarriage		✓	Load sensing hydraulics	✓	
Suspension-type undercarriage	✓		Independent steering, implement, and fan hydraulic pumps	✓	
Carrier rollers	✓		Dozer tilt hydraulics – single tilt	✓	
Hydraulic track adjusters	✓		Dozer tilt hydraulics – dual tilt		✓
Lifetime lubricated track and roller	✓		Guarded blade hydraulic hoses	✓	
Moderate service track shoes (see chart on page 6)	✓		Electronically enabled quick drop valve	✓	
Extreme service track shoes (see chart on page 6)		✓	Rear hydraulics ripper and winch ready	✓	
Track guide	✓		ELECTRICAL		
Sprocket rim segments, replaceable	✓		Standard Lights – 6 LED	✓	
8-roller tubular track roller frame (carrier roller ready)	✓		Premium Lights – 12 LED		✓
Two-piece master links	✓		Access/egress lighting with shutdown timer	✓	
BLADES			Backup alarm	✓	
Semi-Universal (SU)		✓	Beacon warning light		✓
Universal		✓	Converter: 15 Amp, 12V outlets	✓	
Waste/Landfill		✓	Forward warning horn	✓	
Angle		✓			
Rock Guard/Wear Plate		✓			
Push Plate		✓			
FirstCut™ cutting edges (SU blades)		✓			

(continued on next page)

D8 XE Standard and Optional Equipment

Standard and Optional Equipment (continued)

Standard and optional equipment may vary. Consult your Cat dealer for details. For cab details, refer to page 9.

	Standard	Optional		Standard	Optional
BATTERIES, STARTERS, ALTERNATORS AND COOLANT			ATTACHMENTS		
150 Amp alternator	✓		Multi-shank ripper with CapSure™ ripper tips and shank protector		✓
150 Amp ducted alternator		✓	Single shank ripper with CapSure ripper tip and shank protector		✓
24 V starter	✓		Single shank ripper with performance enhancing counterweight		✓
Engine coolant, -37° C (-35° F)	✓		Pin puller (single shank)		✓
Arctic engine coolant, -51° C (-60° F)		✓	Rear striker box with striker bar		✓
Four maintenance free 12-volt batteries (900 cca) (24-volt system)	✓		Rear striker bar		✓
SERVICE AND MAINTENANCE			Winch, PACCAR PV140		✓
30-minute cab removal	✓		Rear counterweight		✓
Centralized, remote mounted pressure taps	✓		Drawbar		✓
Ecology drains	✓		GUARDING AND SCREENS		
Extended service intervals (500 hours engine, 1,000-hour powertrain)	✓		Bottom guards – standard	✓	
Ground-level service center (remote electrical disconnect, secondary shutdown switch, hour meter, jump start)	✓		Bottom guards – heavy duty, powered, sealed		✓
Fast fuel fill		✓	Cab rear screen – fixed or hinged		✓
High-speed oil change		✓	Cab side screens – hinged		✓
Heavy-duty perforated radiator doors, louvered and hinged	✓		Fuel Tank guards		✓
Heavy-duty radiator doors for waste and woodchip applications		✓	HVAC guard		✓
Quick access cab floor		✓	Light guards		✓
Under hood work light	✓		Striker bars, front, suspended		✓
Removable engine enclosures, perforated and hinged	✓		Sweeps package		✓
Scheduled Oil Sampling S·O·S SM ports	✓				
Shovel holder	✓				

D8 XE Environmental Declaration

The following information applies to the machine at the time of final manufacture as configured for sale in the regions covered in this document. The content of this declaration is valid as of the date issued; however, content related to machine features and specifications are subject to change without notice. For additional information, please see the machine's Operation and Maintenance Manual.

For more information on sustainability in action and our progress, please visit <https://www.caterpillar.com/en/company/sustainability>.

Engine

- The Cat® C15 engine meets U.S. EPA Tier 4 Final, EU Stage V and Korea Stage V/Japan 2014 emissions standards.
- Cat diesel engines are required to use ULSD (ultra-low sulfur diesel fuel with 15 ppm of sulfur or less) and are compatible* with ULSD blended with the following lower-carbon intensity fuels** up to:
 - ✓ 20% biodiesel FAME (fatty acid methyl ester)***
 - ✓ 100% renewable diesel, HVO (hydrotreated vegetable oil) and GTL (gas-to-liquid) fuels
- Refer to guidelines for successful application. Please consult your Cat dealer or “Caterpillar Machine Fluids Recommendations” (SEBU6250) for details.
 - *While Caterpillar engines are compatible with these alternative fuels, some regions may not allow their use.
 - **Tailpipe greenhouse gas emissions from lower-carbon intensity fuels are essentially the same as traditional fuels.
 - ***Engines with no aftertreatment devices are compatible with higher blends, up to 100% biodiesel (for use of blends higher than 20% biodiesel, consult your Cat dealer).

Air Conditioning System

The air conditioning system on this machine contains the fluorinated greenhouse gas refrigerant R134a or R1234yf. See the label or instruction manual for identification of the gas.

If equipped with R134a (Global Warming Potential = 1430), the system contains 1.36 kg (2.99 lb) of refrigerant which has a CO₂ equivalent of 1.946 metric tonnes (2.145 tons).

Paint

- Based on best available knowledge, the maximum allowable concentration, measured in parts per million (PPM), of the following heavy metals in paint are:
 - Barium < 0.01%
 - Cadmium < 0.01%
 - Chromium < 0.01%
 - Lead < 0.01%

Sound Performance

Operator Sound Pressure Level (ISO 6396:2008) – 78 dB(A)

Exterior Sound Power Level (ISO 6395:2008) – 113 dB(A)

For machines required to meet applicable regional regulations of Ukraine, United Kingdom, and countries that adopt the “EU Directives”

Oils and Fluids

- Caterpillar factory fills with ethylene glycol coolants. Cat Diesel Engine Antifreeze/Coolant (DEAC) and Cat Extended Life Coolant (ELC) can be recycled. Consult your Cat dealer for more information.
- Cat Bio HYDO™ Advanced is an EU Ecolabel approved biodegradable hydraulic oil.
- Additional fluids are likely to be present, please consult the Operations and Maintenance Manual or the Application and Installation guide for complete fluid recommendations and maintenance intervals.

Features and Technology

- The following features and technology may contribute to fuel savings and/or carbon reduction. Features may vary. Consult your Cat dealer for details.
 - Electric Drive Powertrain drives fuel savings and productivity gains
 - Engine Idle Shutdown Timer reduces fuel burn, carbon emissions and unnecessary idle time by shutting down the machine after a pre-set idling period
 - Emissions reduction technology is designed to operate automatically in the background while you work
 - AutoCarry™ automates blade lift to reduce track slip for maximum efficiency on each pass to help lower fuel burn and carbon emissions
 - Boost productivity with Cat technologies like Cat Grade with Slope Assist and Cat Grade with 3D
 - Remote Flash and Remote Troubleshoot

Recycling

- The materials included in machines are categorized as below with approximate weight percentage. Because of variations of product configurations, the following values in the table may vary.

Material Type	Weight Percentage
Steel	81.73%
Iron	8.11%
Nonferrous Metal	1.82%
Mixed Metal	0.24%
Mixed-Metal and Nonmetal	1.26%
Plastic	0.42%
Rubber	0.13%
Mixed Nonmetallic	0.09%
Fluid	0.58%
Other	0.67%
Uncategorized	4.95%
Total	100%

- A machine with higher recyclability rate will ensure more efficient usage of valuable natural resources and enhance End-of-Life value of the product. According to ISO 16714:2008 (Earthmoving machinery – Recyclability and recoverability – Terminology and calculation method), recyclability rate is defined as percentage by mass (mass fraction in percent) of the new machine potentially able to be recycled, reused or both.

All parts in the bill of material are first evaluated by component type based on a list of components defined by the ISO 16714:2008 and Japan CEMA (Construction Equipment Manufacturers Association) standards. Remaining parts are further evaluated for recyclability based on material type.

Because of variations of product configurations, the following value in the table may vary.

Recyclability – 98%



D8 XE

Waste Handler

From pushing trash to spreading cover, and cell construction to closing, Waste Handlers are designed and manufactured from the frame up to take on the demands of landfill work. Specialized guarding throughout the machine helps protect major components like the chassis, fuel tank, and hydraulic tank from impact and airborne debris.

Added Machine Protection

- High-debris cab has impact-resistant polycarbonate doors and dual pane windows – eliminates the need for door screens.
- Powered air pre-cleaner helps keep cab air clean and pressurized for greater operator comfort.
- Fuel tank guard and heavy duty bottom guards shield major machine components.
- Internal sealing keeps the trash away from the inner compartments.
- Rear striker bar helps protect against trash climbing up the tracks.
- Final drive guarding helps prevent wire wrap and impact to help keep dirt and debris away from the Duo-Cone™ seals.
- 12 premium LED lights illuminate the work area.
- Guarding for lights and heating, cooling, and air conditioning (HVAC) prevent damage from material impact.
- Laminated thermal shields on engine and aftertreatment provide added thermal protection in high debris applications.
- Heavy-duty hinged radiator grill doors protect radiator and fan from penetration by material coming straight in or from under the blade.
- Pivot shaft seal guards help prevent debris from entering and damaging seals.
- Metallic spiral guarding protects the tilt cylinder hoses from damage from debris.

Ease of Maintenance

- High-debris cooling system with automatic reversing fan and slots for easy cleanout access.
- Heavy-duty sealed bottom guard is hinged for easy cleaning.
- Optional center-opening powered and sealed bottom guard makes cleanout even easier.
- Quick access cab floor option offers tool-less access to the floor plate opening.
- Ducted and sealed alternator for longer life.
- Engine pre-cleaner with screen delivers cleaner air to the powertrain.

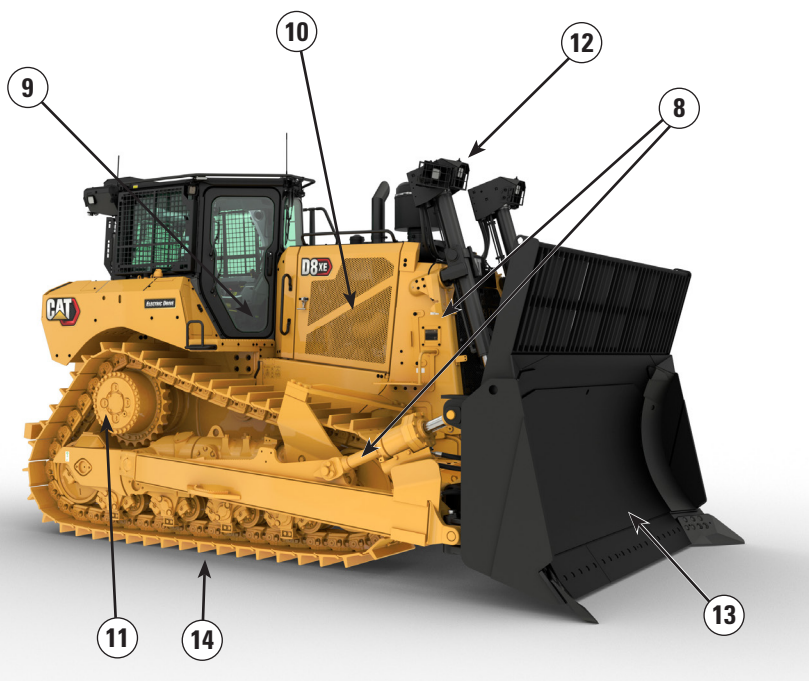
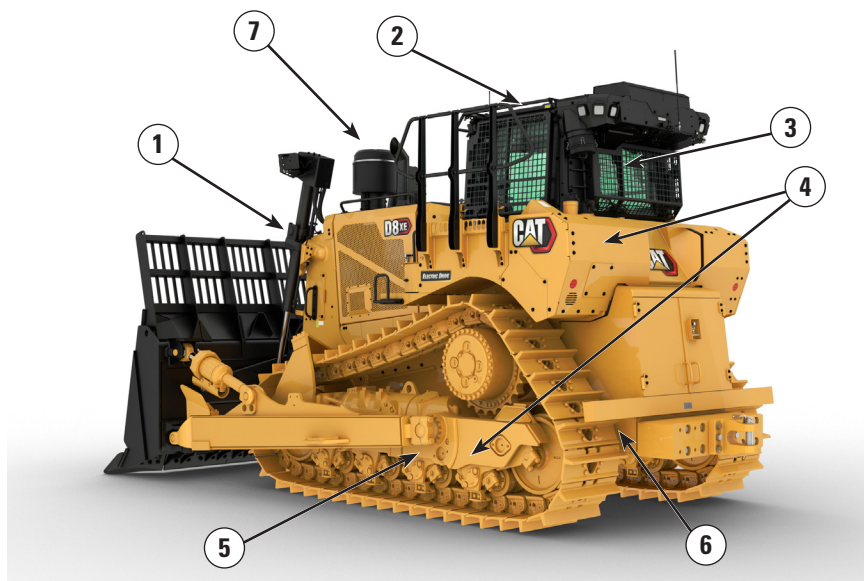
Equipped for the Job

- Landfill blades are equipped with a trash rack to increase productive capacity when machine works in lighter material like waste. Blades are black to reduce glare.
- Wear plate helps extend blade life.
- Heavy-duty undercarriage includes guards and sealed idlers to help prevent debris such as wire, string, or plastic bags from wrapping into seals.
- Press-fit bushings and Positive Pin Retention (PPR2) are particularly well suited for impact applications such as forestry, waste, rock, or V-ditching.
- Trapezoidal center-hole track helps eject debris.
- Beacon warning light mounted to cab provides 360-degree visibility.
- Available with Surround Vision and Rear People Detection for improved operator visibility and jobsite awareness.

D8 XE Waste Handler Specifications

D8 XE Waste Handler Features

- 1) High-debris cooling system with automatic reversing fan and slots for easy cleanout access. Trash resistant radiator, with 6.4 fins per inch, helps reduce plugging.
- 2) High debris cab has impact-resistant polycarbonate doors and dual pane windows, eliminating the need for door screens.
- 3) Powered air pre-cleaner helps keep cab air cleaner and pressurized for greater operator comfort.
- 4) Heavy-duty bottom guards, fuel tank guards, and radiator guards shield major machine components. Internal sealing keeps the trash away from the inner compartments.
- 5) Optional powered bottom guards make cleanout even easier.
- 6) Rear striker bar helps protect against trash climbing up the tracks.
- 7) Engine pre-cleaner with screen delivers cleaner air to the engine.



- 8) Heavy duty radiator grill doors and bottom guards are hinged for easy cleaning.
- 9) Quick access cab floor option offers tool-less access to the floor plate opening.
- 10) Laminated thermal shields on engine and aftertreatment (when equipped) provide added thermal protection in high debris applications. Ducted and sealed alternator for longer life.
- 11) Guarded final drives give added protection against wrapping and impact.
- 12) 12 premium LED lights illuminate the work area.
- 13) Landfill Blades are equipped with a trash rack to increase productive capacity when machine works in lighter material like waste. Wear plate helps extend blade life. Blade is black to reduce glare.

14) Waste Handler Undercarriage:

- Heavy Duty undercarriage includes guards and sealed idlers to help prevent debris such as wire, string, or plastic bags from wrapping into seals.
- Press-fit bushings and Positive Pin Retention (PPR2) are particularly well suited for impact applications such as forestry, waste, rock, or V-ditching.
- Center-hole track helps eject debris.

D8 XE Waste Handler Specifications

Engine

Engine Model	Cat® C15	
Emissions	Meets U.S. EPA Tier 4 Final/ EU Stage V/Korea Stage V/ Japan 2014	
Net Power (1,600 rpm)		
ISO 9249/SAE J1349	259 kW	348 hp
ISO 9249 (DIN)	352 mhp	
Maximum Power (1,600 rpm)		
Engine Power: ISO 14396	273 kW	366 hp
Engine Power: ISO 14396 (DIN)	371 mhp	
Bore	137 mm	5.4 in
Stroke	172 mm	6.8 in
Displacement	15.2 L	927.56 in ³

- Net power advertised is the power available at the flywheel when the engine is equipped with fan, air cleaner, muffler, and alternator.
- Advertised power is tested per the specified standard in effect at the time of manufacture.
- No derating required up to 3779 m (12,400 ft) altitude, beyond 3779 m (12,400 ft) automatic derating occurs.
- Cat diesel engines are required to use ULSD (ultra-low sulfur diesel blended with 15 ppm of sulfur or less) and are compatible* with ULSD blended with the following lower-carbon intensity fuels** up to:
 - ✓ 20% biodiesel FAME (fatty acid methyl ester)***
 - ✓ 100% renewable diesel, HVO (hydrotreated vegetable oil) and GTL (gas-to-liquid) fuels
- Refer to guidelines for successful application. Please consult your Cat dealer or “Caterpillar Machine Fluids Recommendations” (SEBU6250) for details.

*While Caterpillar engines are compatible with these alternative fuels, some regions may not allow their use.

**Tailpipe greenhouse gas emissions from lower-carbon intensity fuels are essentially the same as traditional fuels.

***Engines with no aftertreatment devices are compatible with higher blends, up to 100% biodiesel (for use of blends higher than 20% biodiesel, consult your Cat dealer).

D8 XE Drive Train

Type	Electric Drive	
Electric Drive System	715 V	
Nominal Voltage		

Fluid/Refill Capacities

Fuel Tank	528 L	139.5 gal
Diesel Exhaust Fluid (DEF) Tank	33 L	8.7 gal
Cooling System	96 L	25.4 gal
Engine Crankcase*	43 L	11.4 gal
Powertrain	208 L	54.9 gal
Final Drives (each)	12.5 L	3.3 gal
Roller Frames (each)	47 L	12.4 gal
Pivot Shaft Compartment	32 L	8.5 gal
Hydraulic Tank	69 L	18.2 gal

*with oil filter

Air Conditioning System

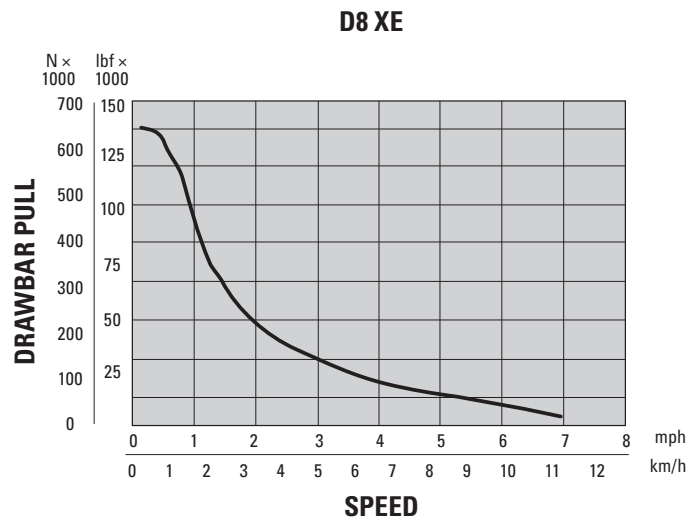
The air conditioning system on this machine contains the fluorinated greenhouse gas refrigerant R134a or R1234yf. See the label or instruction manual for identification of the gas.

If equipped with R134a (Global Warming Potential = 1430), the system contains 1.36 kg (2.99 lb) of refrigerant which has a CO₂ equivalent of 1.946 metric tonnes (2.145 tons).

Transmission

1.0 Forward	3.6 km/h	2.24 mph
1.5 Forward	4.9 km/h	3.02 mph
2.0 Forward	6.5 km/h	4.06 mph
2.5 Forward	9.2 km/h	5.72 mph
3.0 Forward	11.7 km/h	7.23 mph
1.0 Reverse	3.6 km/h	2.24 mph
1.5 Reverse	4.9 km/h	3.02 mph
2.0 Reverse	6.5 km/h	4.06 mph
2.5 Reverse	9.2 km/h	5.72 mph
3.0 Reverse	11.7 km/h	7.23 mph

Drawbar Pull



NOTE: Usable pull will depend on traction and weight of machine.

D8 XE Waste Handler Specifications

Hydraulic Controls

Bulldozer Relief Valve Setting	32 500 kPa	4,714 psi
Maximum Operating Pressure		
Implement	24 000 kPa	3,481 psi
Steering	42 000 kPa	6,092 psi
Tilt Cylinder	24 000 kPa	3,481 psi
Lift Cylinder	24 000 kPa	3,481 psi
Ripper (Lift)	24 000 kPa	3,481 psi
Ripper (Pitch)	24 000 kPa	3,481 psi
Winch	24 000 kPa	3,481 psi
Pump		
Pump Type	Piston-type, Variable Displacement	
Pump Output (Steering)	370 L/min	98 gal/min
Pump Output (Implement)	243 L/min	64 gal/min
Tilt Cylinder Rod End Flow	130 L/min	34 gal/min
Tilt Cylinder Head End Flow	170 L/min	45 gal/min

- Steering flow numbers measured at 1,700 rpm engine speed.
- Implement flow numbers measured at 1,400 rpm engine speed.
- Electro-hydraulic pilot valve assists operations of ripper and dozer controls. A standard hydraulic system includes four valves.
- Complete system consists of pump, tank, filter, oil cooler, valves, lines, and control levers.

Advanced Cabin Filtration

Operator Cabin

- Distributed HVAC ducting with automatic temperature control and blower speed provides ultimate operator comfort with less user input.
- Reduced maintenance of the condenser core with automatic reversing fans.
- Cat Advanced Cabin Filtration is standard.

Cat Advanced Cabin Filtration

- Operator protection from respirable particulate (0.3-10-micron size).
- Sustainably pressurized cab (U.S. Silica compliant).
- Reduced maintenance with longer life, high efficiency filters.
- Protection for all cabin components: electronics, etc.
- Helps meet U.S. Occupational Safety and Health Administration Silica Rule Table 1 requirements for operator cabs.
- Multi-tiered filter offerings for optional efficiency upgrades.
Contact Cat dealer for availability.
 - MERV 16 – Standard Equipment
 - HEPA
 - Activated Carbon + HEPA
 - ABEK1 + HEPA

Standards

Sound Level Information

- Hearing protection may be needed when the machine is operated with an open operator station, in a noisy environment, with a cab that is not properly maintained, or when the doors and windows are open for extended periods of time.

Sound Level	Test Method	
Operator Sound Pressure Level	78 dB(A)*	“ISO 6396:2008” ⁽¹⁾
Exterior Sound Pressure Level	113 dB(A)*	“ISO 6395:2008” ⁽²⁾

*Including machines required to meet applicable regional regulations of Ukraine, United Kingdom, and countries that adopt the “EU Directives”

- ⁽¹⁾The measurement was conducted at 70% of the maximum engine cooling fan speed. The sound level may vary at different engine cooling fan speeds. The measurement was conducted with the cab doors and the cab windows closed. The cab was properly installed and maintained.
- ⁽²⁾The measurement was conducted at 70% of the maximum engine cooling fan speed. The sound level may vary at different engine cooling fan speeds.
- The sound levels listed above include both measurement uncertainty and uncertainty due to production variation.

Rollover Protective Structure (ROPS)/ Falling Object Protective Structure (FOPS)

- ROPS meets the following criteria: ISO 3471:2008.
- FOPS meets the following criteria: ISO 3449:2005 Level II.

Brakes

- Brakes meet the standard ISO 10265:2008.

D8 XE Waste Handler Specifications

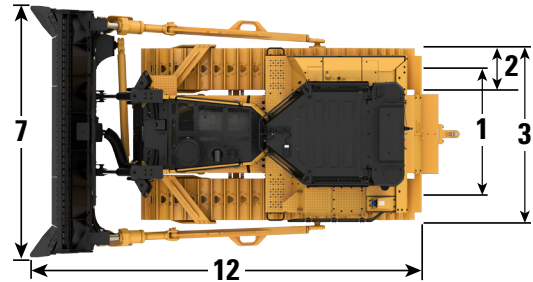
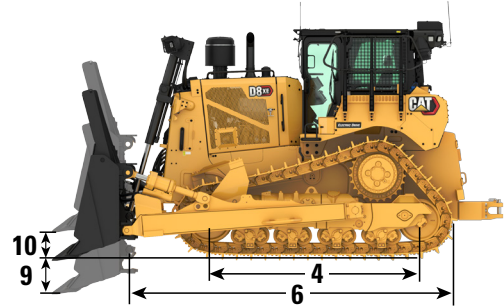
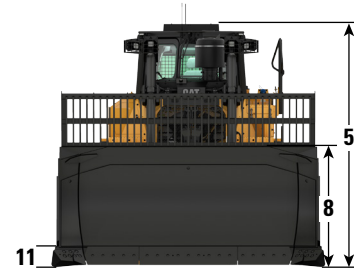
D8 XE Waste Handler Dimensions

Operating Weight*	40 500 kg	89,287 lb
Shipping Weight**	34 675 kg	76,445 lb
Ground Pressure (ISO 16754)	85 kPa	12.33 psi
Undercarriage	44 Sections with 8 Bottom Rollers	
1 Track Gauge	2.08 m	6'10"
2 Width of Track Shoe (Standard)	660 mm	26 in
3 Width of Tractor (without trunnions)	2.79 m	9'2"
4 Length of Track on Ground	3.21 m	10'6"
Ground Contact Area (ISO 16754)	4.68 m ²	50.4 ft ²
Grouser Height (Extreme Service)	84 mm	3.3 in
Ground Clearance	0.62 m	2'0"
5 Machine Height*** (Tip of Grouser to top of HVAC Guard)	3.65 m	12'0"
Top of Cab*	3.52 m	11'7"
Top of Guardrail	3.39 m	11'1"
6 Length of Basic Tractor	4.76 m	15'7"
Add the following to the total length of the machine when these attachments are installed.		
Blade (SU)	1.42 m	4'8"
Drawbar	0.36 m	1'2"
Drawbar with Counterweight	0.39 m	1'3"
Single Shank [SS] Ripper (with tip at ground line and shank pin in middle hole)	1.85 m	6'1"
Multi-Shank [MS] Ripper (with tip at ground line and shank pin in top hole)	1.85 m	6'1"
Waste Striker Box (includes three counterweights)	0.72 m	2'4"
Winch	0.78 m	2'7"

*Operating weight includes blade, lubricants, coolant, full fuel tank, ROPS/FOPS cab, Striker Box, and 75 kg (165 lb) operator.

**Shipping weight includes lift cylinders, lubricants, coolant, 10% fuel, ROPS/FOPS cab, and Striker Box.

***Machine height from tip of grouser to top of HVAC Guard. For sweeps, add 60 mm (2.4 in) to overall machine height. With Super Extreme Service, add 10 mm (0.4 in). When Cat Grade with 3D antennas are installed there is no added machine height.



D8 XE Waste Handler Specifications

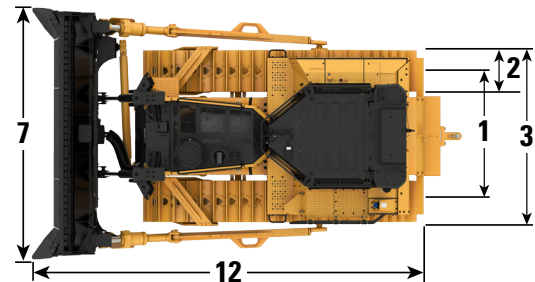
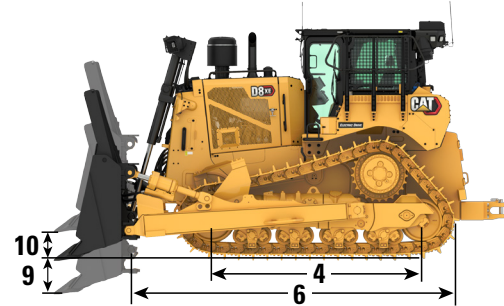
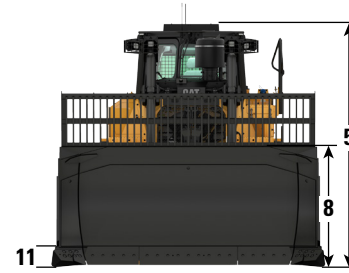
D8 XE Waste Handler LGP Dimensions

Operating Weight*	42 145 kg	92,914 lb
Shipping Weight**	36 382 kg	80,209 lb
Ground Pressure (ISO 16754)	60.5 kPa	8.77 psi
Undercarriage	44 Sections with 8 Bottom Rollers	
1 Track Gauge	2.34 m	7'8"
2 Width of Track Shoe (Standard)	970 mm	38.19
3 Width of Tractor (without trunnions)	3.30 m	10'10"
4 Length of Track on Ground	3.21 m	10'6"
Ground Contact Area (ISO 16754)	6.84 m ²	73.63 ft ²
Grouser Height (Extreme Service)	84 mm	3.3
Ground Clearance	0.62 m	2'0"
5 Machine Height*** (Tip of Grouser to top of HVAC Guard)	3.65 m	12'0"
Top of Cab*	3.52 m	11'7"
Top of Guardrail	3.39 m	11'1"
6 Length of Basic Tractor	4.76 m	15'7"
Add the following to the total length of the machine when these attachments are installed.		
Blade (SU LGP)	1.36 m	4'5"
Drawbar	0.36 m	1'2"
Drawbar with Counterweight	0.39 m	1'3"
Multi-Shank [MS] Ripper (with tip at ground line and shank pin in top hole)	1.85 m	6'1"
Waste Striker Box (includes three counterweights)	0.72 m	2'4"
Winch	0.78 m	2'7"

*Operating weight includes blade, lubricants, coolant, full fuel tank, ROPS/FOPS cab, Striker Box, and 75 kg (165 lb) operator.

**Shipping weight includes lift cylinders, lubricants, coolant, 10% fuel, ROPS/FOPS cab, and Striker Box.

***Machine height from tip of grouser to top of HVAC Guard. For sweeps, add 60 mm (2.4 in) to overall machine height. When Cat Grade with 3D antennas are installed there is no added machine height.



Blades

Type	SU Landfill with Wear Plate		Universal Landfill		LGP SU Landfill	
Capacity (ISO 9246)	21.2 m ³	27.73 yd ³	23.4 m ³	30.61 yd ³	22.2 m ³	29.04 yd ³
7 Width across End bits	4038 mm	159.0 in	4263 mm	167.8 in	4542 mm	178.8 in
Width without End bits	3948 mm	155.4 in	4164 mm	163.9 in	4450 mm	175.2 in
8 Height	2553 mm	100.5 in	2544 mm	100.2 in	2454 mm	96.6 in
9 Dig Depth ¹	576 mm	22.7 in	570 mm	22.4 in	575 mm	22.6 in
10 Lift Height ¹	1246 mm	49.1 in	1232 mm	48.5 in	1227 mm	48.3 in
11 Maximum Tilt at Blade Corner ¹	573 mm	22.6 in	593 mm	23.3 in	556 mm	21.9 in
Maximum Tilt Angle ¹	8.5°		8.5°		7.3°	
Pitch Adjustment ²	±3.5°		±3.5°		±4.3°	
12 Length of Machine with Blade (with SS Ripper tip on ground)	7.91 m	26'0"	8.23 m	27' 0"	6.41 m	21'0"
Blade Weight (blade + push arms installed and dozer installation)	5451 kg	12,017 lb	5962 kg	13,144 lb	5383 kg	11,867 lb

¹Single tilt configuration with blade in neutral tilt position

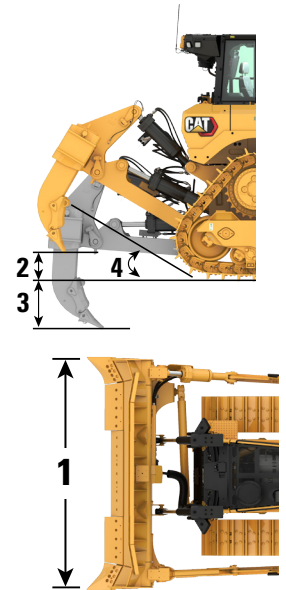
²Dual tilt configuration

D8 XE Waste Handler Specifications

Ripper

Type	Single-Shank, Adjustable Parallelogram		Single-Shank, Adjustable Parallelogram, with Counterweight		Multi-Shank, Adjustable Parallelogram	
Number of Pockets	1		1		3	
Weight with One Shank	4032 kg	8,889 lb	5605 kg	12,357 lb	4024 kg	8,871 lb
Weight with Three Shanks	–	–	–	–	4718 kg	10,401 lb
Weight, Standalone Shank	410 kg	904 lb	410 kg	904 lb	347 kg	765 lb
1 Carriage Width	1443 mm	56.8 in	1492 mm	58.7 in	2465 mm	97 in
2 Maximum Tip Clearance, Shank-In	626 mm	24.6 in	626 mm	24.6 in	626 mm	24.6 in
3 Maximum Penetration	1136 mm	44.7 in	1136 mm	44.7 in	782 mm	30.8 in
4 Maximum Ramp Angle, Shank-In	29.8°		29.8°		30.4°	
Maximum Penetration Force ¹	130.6 kN	29,360 lb	146.1 kN	32,845 lb	129 kN	29,000 lb
Maximum Pryout Force ¹	247.4 kN	55,618 lb	226.1 kN	50,829 lb	248.4 kN	55,843 lb

¹Measured with one shank, vertical
Values above do not include the weight of hydraulic hoses or mounting hardware.



Winch

Model	PA140	
Weight ²	2210 kg	4,700 lb
Oil Capacity	15 L	4.0 gal
Increased Tractor Length	781 mm	30.7 in
Winch Length	1614 mm	63.5 in
Winch Case Width	1226 mm	48.3 in
Drum Width	332 mm	13.1 in
Flange Diameter	610 mm	24.0 in
Maximum Recommended Drum Capacity ³		
Recommended Cable Size	29 mm	1.125 in
Optional Cable Size	32 mm	1.25 in
Drum Capacity		
Recommended Cable Length	56 m	183'9"
Optional Cable	36 m	118'1"

• PA140 – Variable speed, hydraulically driven, dual braking system, three roller fairlead.

²Approximate weight includes winch, mounting bracket and hardware, and standard wire rope.

³Per SAE J706

Track Shoes

Some track shoes not available in all regions. Consult your Cat dealer for details.

Heavy Duty (HD)	Standard			LGP
	610 mm (24 in)	660 mm (26 in)	710 mm (28 in)	965 mm (38 in)
Moderate Service	✓	✓	✓	✓
Extreme Service	✓	✓	✓	✓
Super Extreme Service	✓			
Moderate Service Trapezoidal			✓	
Extreme Service Trapezoidal	+	+	+	+
Super Extreme Service Trapezoidal		+		

✓ Available for Waste Handlers

+ Recommended for Waste Handlers

D8 XE Waste Handler Standard and Optional Equipment

Standard and Optional Equipment

Standard and optional equipment may vary. Consult your Cat® dealer for details. For cab details, refer to page 9.

	Standard	Optional
POWERTRAIN		
Cat® C15 engine	✓	
XE Electric Drive Powertrain	✓	
Aftercooler, air-to-air (ATAAC)	✓	
Brakes, Extreme Service		✓
Coolant, extended life	✓	
Diesel exhaust fluid (DEF) system – electronic fill indicator, heated lines/tank	✓	
Differential steering	✓	
Engine air filter with electronic service indicator	✓	
Engine air pre-cleaner with dust ejection	✓	
Engine air pre-cleaner with screen and dust ejector		+
Engine with thermal shield		+
Engine idle shutdown	✓	
Final Drives, double reduction – Standard or LGP	✓	
Final Drives, double reduction – Arctic, Waste		+
Fuel water separator	✓	
Fuel priming pump, electric	✓	
Fan, hydraulic demand	✓	
Fan, auto reversing	✓	
Oil change system, high speed		✓
Radiator, aluminum bar plate with debris resistant cores	✓	
High performance single plane cooling system	✓	
Sound Suppression		✓
Starting Aid, automatic ether	✓	
Starting Aid, jacket water heater (110V or 220V)		✓

	Standard	Optional
CAT TECHNOLOGY		
Cat Slope Indicate	✓	
Cat Assist with ARO Package*	✓	
Cat Grade 3D Ready with Assist Package (Hardware Only)*		✓
Cat Grade 3D with Assist Package*		✓
Third-Party Grade Control Ready Cab	✓	
Compatibility with radios and base stations from Trimble, Topcon, and Leica	✓	
Capability to install 3D grade systems from Trimble, Topcon, and Leica	✓	
Product Link™ – Cellular or Dual Mode		✓
Remote Flash/Troubleshoot	✓	
Cat Track Wear Sensor		✓
Grade Connectivity		✓
Grade Corrections Radio		✓
Machine Security – Passcode	✓	
Machine Security – Bluetooth		✓
Remote Control Ready	✓	
Cat Command for Dozing		✓
Cat Detect Ready with Surround Vision**		✓
Cat Detect Ready with Surround Vision and Rear People Detection**		✓

+Recommended for Waste Handlers

*Refer to page 7 for technology package details.

**Refer to page 8 for Cat Detect package details.

(continued on next page)

D8 XE Waste Handler Standard and Optional Equipment

Standard and Optional Equipment *(continued)*

Standard and optional equipment may vary. Consult your Cat dealer for details. For cab details, refer to page 9.

	Standard	Optional
UNDERCARRIAGE		
Standard or Low Ground Pressure (LGP) undercarriage	✓	
Heavy-duty with Positive Pin Retention (PPR) undercarriage – 44 section track, sealed and lubricated, single grouser shoes (now includes extended life bushings)	✓	
Waste undercarriage		+
Arctic undercarriage		✓
Suspension-type undercarriage	✓	
Carrier rollers	✓	
Hydraulic track adjusters	✓	
Lifetime lubricated track and roller	✓	
Moderate service track shoes (see chart on page 20)	✓	
Trapezoidal track shoes (see chart on page 20)		+
Track guide	✓	
Sprocket rim segments, replaceable	✓	
8-roller tubular track roller frame (carrier roller ready)	✓	
Two-piece master links	✓	
BLADES		
Semi-Universal (SU)		✓
Universal		✓
Waste/Landfill		+
Angle Blade		✓
Rock Guard/Wear Plate		✓
Push Plate		✓
FirstCut cutting edges (SU blades)		✓

+Recommended for Waste Handlers

PUSH ARMS		
Standard	✓	
Extreme		✓
HYDRAULICS		
Load sensing hydraulics	✓	
Independent steering and implement pumps	✓	
Dozer tilt hydraulics – single tilt	✓	
Dozer tilt hydraulics – dual tilt		✓
Guarded blade hydraulic hoses	✓	
Electronically enabled quick drop valve	✓	
Rear hydraulics ripper and winch ready	✓	
ELECTRICAL		
Standard Lights – 6 LED	✓	
Premium lights – 12 LED		+
Access/egress lighting with shutdown timer	✓	
Backup alarm	✓	
Beacon warning light		+
Converter: 15 Amp, 12V outlets	✓	
Forward warning horn	✓	
BATTERIES, STARTERS, ALTERNATORS AND COOLANT		
150 Amp alternator	✓	
150 Amp ducted alternator		+
24 V starter	✓	
Engine coolant, –37° C (–35° F)	✓	
Arctic engine coolant, –51° C (–60° F)		✓
Four maintenance free 12-volt batteries (900 cca) (24-volt system)	✓	

(continued on next page)

D8 XE Waste Handler Standard and Optional Equipment

Standard and Optional Equipment *(continued)*

Standard and optional equipment may vary. Consult your Cat dealer for details. For cab details, refer to page 9.

	Standard	Optional		Standard	Optional
SERVICE AND MAINTENANCE			ATTACHMENTS		
30-minute cab removal	✓		Multi-shank ripper with CapSure ripper tips and shank protector		✓
Centralized, remote mounted pressure taps	✓		Single shank ripper with CapSure ripper tip and shank protector		✓
Ecology drains	✓		Pin puller (single shank)		✓
Extended service intervals (500 hours engine, 1,000-hour powertrain)	✓		Rear striker box with striker bar		+
Ground-level service center (remote electrical disconnect, secondary shutdown switch, hour meter, jump start)	✓		Rear striker bar		+
Fast fuel fill		✓	Winch, PACCAR PV140		✓
High-speed oil change		✓	Rear counterweight		✓
Heavy-duty perforated radiator doors, louvered and hinged	✓		Drawbar		✓
Heavy-duty radiator doors for waste and woodchip applications		+	GUARDING AND SCREENS		
Quick access cab floor		+	Bottom guards – standard	✓	
Under hood work light	✓		Bottom guards – heavy duty, powered, sealed		+
Removable engine enclosures, perforated and hinged	✓		Cab rear screen – fixed or hinged		✓
S·O·S sampling ports	✓		Cab side screens – hinged		✓
Shovel holder	✓		Fuel Tank guards		+
			HVAC guard		+
			Light guards		+
			Striker bars, front, suspended		✓
			Sweeps package		✓

+Recommended for Waste Handlers

For more complete information on Cat products, dealer services, and industry solutions, visit us on the web at www.cat.com

© 2026 Caterpillar
All rights reserved

Materials and specifications are subject to change without notice. Featured machines in photos may include additional equipment. See your Cat dealer for available options.

CAT, CATERPILLAR, LET'S DO THE WORK, VisionLink, their respective logos, "Caterpillar Corporate Yellow," the "Power Edge" and Cat "Modern Hex" trade dress as well as corporate and product identity used herein, are trademarks of Caterpillar and may not be used without permission.

AEXQ4228-00 (05-2026)
Build Number: 22A
(Aus-NZ, Chile, Colombia,
Europe, Japan,
N Am, S Korea, Türkiye)

