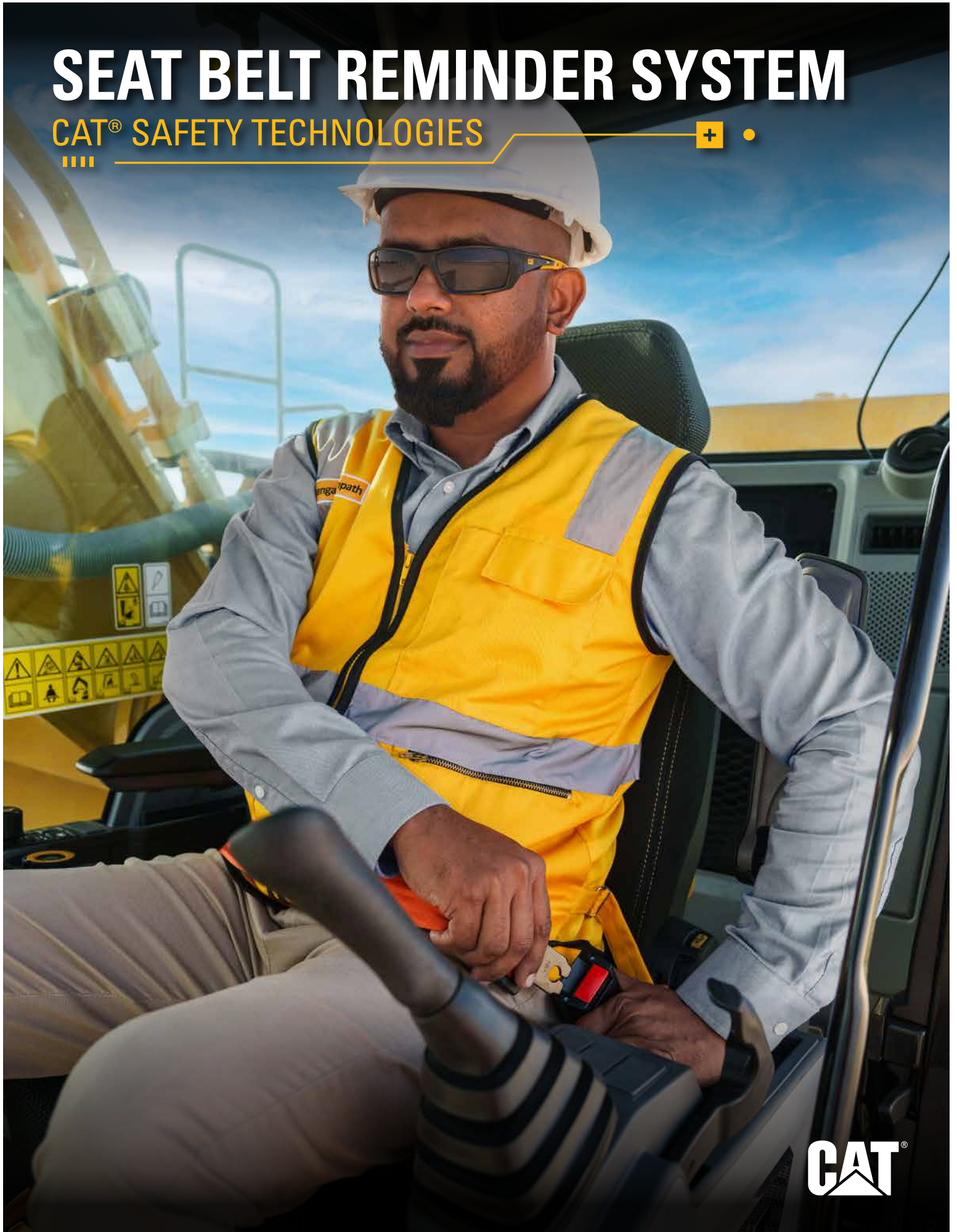


SEAT BELT REMINDER SYSTEM

CAT® SAFETY TECHNOLOGIES



CAT[®] SAFETY TECHNOLOGIES

BUCKLE DOWN ON SAFETY

Wearing a seat belt is one of the simplest ways to help protect operators from injury during rollovers, sudden stops, or other unexpected movements. However, we all get busy, and sometimes distractions can lead us to forget. That's where the Cat[®] Seat Belt Reminder System comes in; it helps remind operators to fasten their seat belts, keeping safety at the forefront.



WHY IT MATTERS

Seat belt use is one of the simplest and most effective ways to reduce operator risk. The Seat Belt Reminder System helps promote consistent behavior by reinforcing proper startup procedures before unsafe operation can occur.

- + Encourages consistent seat belt use across operators and shifts
- + Reinforces safe machine startup behavior
- + Supports jobsite safety culture through visibility and accountability
- + Helps reduce risk during machine operation

HOW IT WORKS

CLEAR REMINDERS WHEN IT MATTERS MOST

The Seat Belt Reminder System helps promote proper seat belt usage by monitoring operator behavior and responding when it detects improper use. It features in-cab alerts, optional jobsite visibility, and may prevent machine travel to help ensure that wearing a seat belt becomes a consistent habit. Prioritizing seat belt use not only protects the operator but also improves overall jobsite safety.



1. Monitors Seat Belt Status

The system continuously monitors whether the operator's seat belt is fastened correctly. For machines with a trainer or companion seat, the seat belt on that seat can also be checked.



2. Seat Belt Alert

If an operator tries to operate the machine without fastening their seat belt, such as when they disengage the parking brake or initiate machine movement, the Seat Belt Alert will remind them by activating:

- + Audible alerts in the cab
- + Visual indicators, including a seat belt light or display message



3. Seat Belt Misuse

Seat Belt Misuse identifies situations where the belt is latched but not properly secured over a seated operator (for example, buckled behind the seat). When misuse is detected, audible and visual alerts activate in the cab.*



4. Seat Belt Inhibit

Seat Belt Inhibit can prevent the machine from traveling if the seat belt is not fastened, helping to intervene before unsafe operation occurs.*



5. Optional Jobsite Visibility and Safety Event Recording

The system can support:

- + An optional external beacon provides a visual indication of seat belt use on the jobsite.
- + Safety event recording for off-board visibility through VisionLink™, allowing managers to understand seat belt usage trends and reinforce safe behavior.

**Feature availability may vary by model or region. Seat Belt Inhibit is standard on machines sold in Europe to comply with EU Machinery Regulation 2023/1230.*



VISIONLINK™

TURN SAFETY DATA INTO SAFER BEHAVIOR

VISIONLINK

Filters Search assets Help Center

XE3101 980XE | CAT 980-14XE | Medium Wheel Loader PerformancePro 494.5 Hours

105 W Iron Ave, Me... Asset Off PLE642 Reporting Custom Asset State: Subscribing Dealer: More Request Service Shop Parts

Overview Needs Review

Safety Health Planned Maintenance Service Timeline Utilization Asset Operation Agreements Toolkit Map ECM/Telematics Upgrades File Storage

Last 30 Days (03/19/2026 - 04/17/2026)

- Overview: 62 Total Events, 37.2 Total Runtime Hours, 1.6 Events/Hour
- Mitigation: 50 Events, 10 Overridden
- Motion Inhibit: 2 Events, 0 Overridden
- Warning: 8 Events, 0 Overridden
- Seat Belt Violation: 2 Events, 0 Abuses

List View (Events) Grid View (Videos) Search 1 - 60 of 60

Event Type	Operator/Driver	Event Date	Event Location	Detected Object
Seat Belt	Unknown	04/02/2026; 06:22 PM CDT	105 W Iron Ave, Me...	Unclassified
Mitigation	Unknown	04/02/2026; 06:22 PM CDT	105 W Iron Ave, Me...	Unclassified
Motion Inhibit	Unknown	04/02/2026; 06:19 PM CDT	105 W Iron Ave, Me...	People
Mitigation	Unknown	04/02/2026; 06:18 PM CDT	105 W Iron Ave, Me...	Unclassified
Seat Belt	Unknown	04/02/2026; 06:17 PM CDT	105 W Iron Ave, Me...	Unclassified
Mitigation Overridden	Unknown	04/02/2026; 04:23 PM CDT	105 W Iron Ave, Me...	Unclassified
Mitigation Overridden	Unknown	04/02/2026; 04:19 PM CDT	105 W Iron Ave, Me...	Unclassified
Mitigation Overridden	Unknown	04/02/2026; 04:19 PM CDT	105 W Iron Ave, Me...	Unclassified
Mitigation Overridden	Unknown	04/02/2026; 04:19 PM CDT	105 W Iron Ave, Me...	Unclassified
Mitigation Overridden	Unknown	04/02/2026; 04:19 PM CDT	105 W Iron Ave, Me...	Unclassified
Mitigation	Unknown	04/02/2026; 03:51 PM CDT	105 W Iron Ave, Me...	Unclassified
Mitigation	Unknown	04/02/2026; 03:51 PM CDT	105 W Iron Ave, Me...	Unclassified

SAFETY MADE SMARTER

When a machine is operated without a properly fastened seat belt, audible and visual alerts notify the operator in the cab. Each alert is automatically recorded and sent to VisionLink, capturing the event as a safety data point with no manual input required.

Within VisionLink, customers can view seat belt alerts by machine or jobsite, track compliance trends over time, and visualize where events occur using asset maps. These insights help uncover behavior patterns and support more focused coaching and operator training.

WHY IT MATTERS

- + Safety behaviors become measurable, not assumed
- + Managers gain proactive insight, not just incident data
- + Helps reinforce consistent seat belt use across fleets and job sites

INSIGHTS ON DEMAND

VisionLink allows customers to configure notifications for seat belt events, delivered by email, text, or within the application's review workflow. Daily thresholds can be set, and notifications tailored to specific assets or asset groups.

Safety reports can be downloaded or scheduled for routine distribution, making it easy to review performance offline or share insights with your team. Reports include all available safety metrics for the selected timeframe.

VISIONLINK™ - From Dirt to Data

VisionLink is a user-friendly, connected application that consolidates equipment data, productivity metrics, safety information, and operator insights into one easy-to-access location. It provides real-time visibility across your entire fleet, enabling you to monitor equipment location, health, and utilization, track job site performance, and identify opportunities to enhance safety and efficiency. By transforming machine data into actionable insights, VisionLink empowers you to make informed decisions, reduce operating costs, and ensure your machines remain productive, regardless of where the job takes you.

NOTE: VisionLink subscription and compatible Product Link hardware required. Availability may vary by region. Consult your Cat Dealer for more details.



FLEXIBLE DEPLOYMENT

A SOLUTION THAT CAN WORK ACROSS YOUR FLEET ■■■

The Seat Belt Reminder System is designed for new Cat machines and selected existing equipment to promote consistent safety practices across your entire fleet.

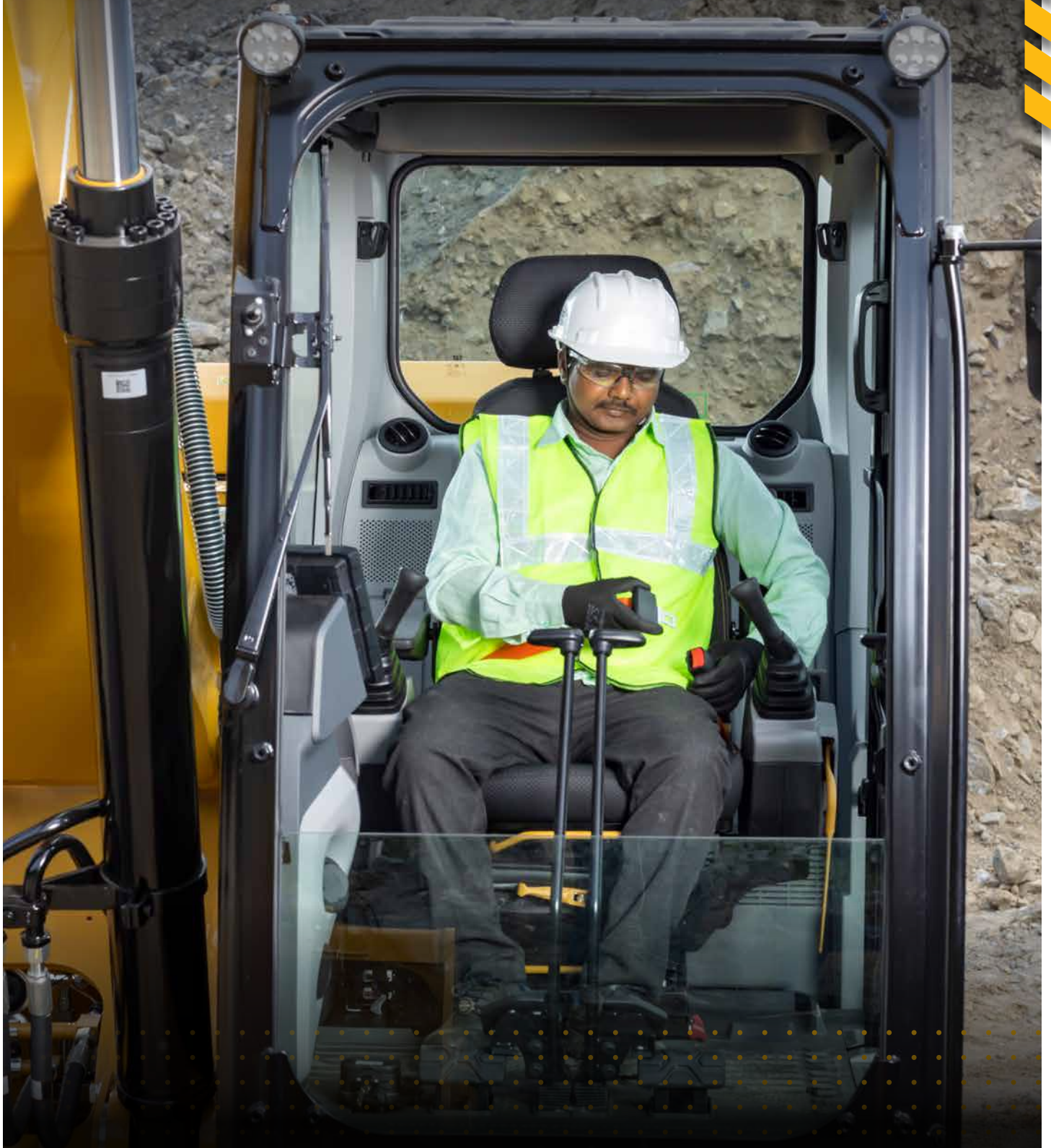
Availability:

- + Factory-installed (features may vary by model)
- + Cat retrofit kits (model dependent)*
- + Universal aftermarket kit for mixed OEM fleets (Seat Belt Alert only)
- + Operates with 2, 3, and 4-point belt restraints
- + Compatible with trainer and companion seat configurations

**Availability depends on Cat machine model and configuration. Some features may require software updates or additional hardware. Not all features are available on all Cat models.*

REINFORCE SAFE BEHAVIOR

The Seat Belt Reminder System helps crews focus on the job, while the system focuses on reinforcing safer behaviors on the machine.





When you select Cat equipment and technology, you benefit from the support of the largest and most experienced dealer network in the industry.

You gain a partner committed to assisting you and your operation at every stage. Whether you require expert advice or emergency service, your Cat dealer is there for you from day one.

Ask your Cat dealer how the Seat Belt Reminder System can support safer operation across your fleet.

Features May Vary by Equipment Model or Region.

For more complete information on Cat products, dealer services and industry solutions, visit us on the web at www.cat.com.

PEDJ1631 (04-2026)
(Global)

© 2026 Caterpillar. All Rights Reserved.

Materials and specifications are subject to change without notice. Featured machines in photos may include additional equipment. See your Cat dealer for available options.

CAT, CATERPILLAR, LET'S DO THE WORK, VisionLink, their respective logos, "Caterpillar Corporate Yellow," the "Power Edge" and Cat "Modern Hex" trade dress as well as corporate and product identity used herein, are trademarks of Caterpillar and may not be used without permission.

www.cat.com www.caterpillar.com

