

BALE GRABS

SKID STEER LOADERS
COMPACT TRACK LOADERS
COMPACT WHEEL LOADERS



Model
2060 mm (81 in), Round

2130 mm (84 in), Square/Round

Machine Compatibility

216B3, 226B3, 226D3, 232D3, 236D3, 239D3, 249D3, 250, 255, 260, 265,
270/270 XE, 275/275 XE, 285/285 XE, 903, 906, 907, 908

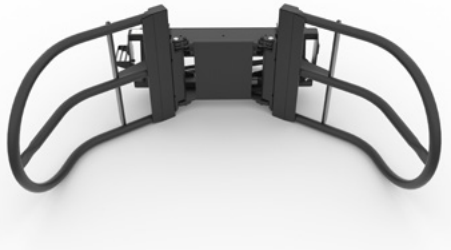
216B3, 226B3, 226D3, 232D3, 236D3, 239D3, 249D3, 250, 255, 260, 265,
270/270 XE, 275/275 XE, 285/285 XE, 903, 906, 907, 908

Current production machines listed. Machine model availability and attachment vary by region. Contact your local Cat® dealer for exact compatibility and availability.



Cat® Bale Grabs for skid steer loaders, compact track loaders and compact wheel loaders are designed for grasping and carrying baled material. Bales of wheat, hay and other materials are easily transported for livestock feed, bedding, to and from bale wrapper, and movement to storage. The bale grab firmly grasps baled materials but due to the rounded arm design no damage will take place to the bale. The ability to pick up bales sitting flat or on their side the bale grab increases machine versatility to manipulate round or square bales in any position.

FEATURES



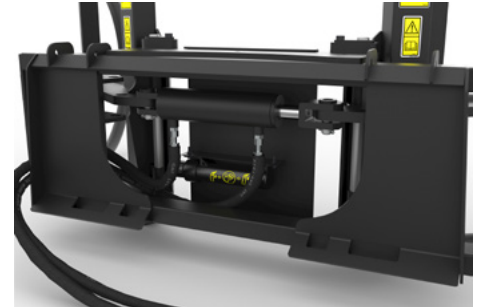
TWO DESIGNS

Round bale grab can grasp round bales up to 1524 mm (5 ft) in size and the square / round bale grab has a wider inside width to allow grasping a round or square bale up to 1828 (6 ft) in size.



TUBULAR ARMS

Tubular constructed arms eliminate damage to wrapped bales.



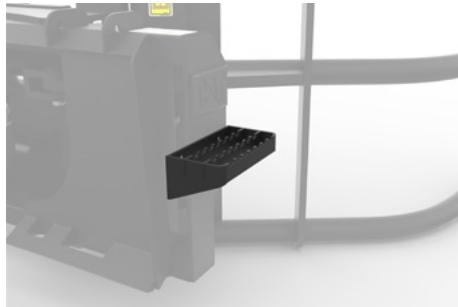
RIGID FRAME

High strength steel frame ensures durability. Hardened pins and easily accessible grease points extend life of the attachment.



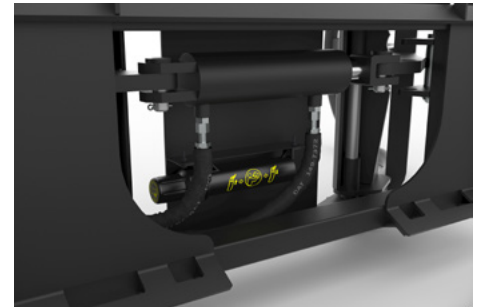
LOCKING ARMS

One arm can be locked in a fixed position using locking pins, allowing all motion to occur exclusively through the second arm. This configuration is especially useful for stacking operations, where consistent reach and repeatable alignment are required.



BOLT-ON SERRATED STEP

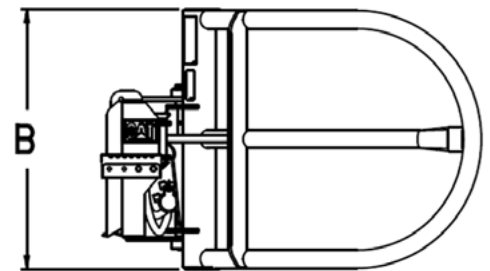
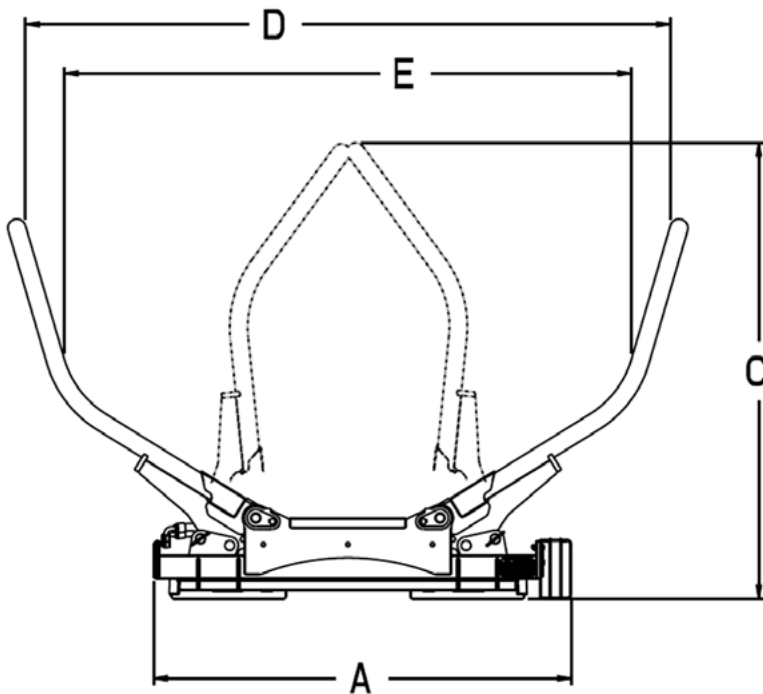
Serrated step provides safe and ergonomic access to machine cab that is easily replaceable if damaged.



OMM CONTAINER

Tool mounted and sealed from the elements, container stores the Operation Maintenance Manual (OMM) in a protective case on the attachment.

SPECIFICATIONS - BALE GRABS



BALE GRABS		
Model	2060 mm (81 in), Round	2130 mm (84 in), Square/Round
A Overall Width – mm (in)	1400 (55.1)	1400 (55.1)
B Overall Height – mm (in)	873 (34.4)	873 (34.4)
C Overall Depth – mm (in)	1550 (61)	1630 (64.2)
D Maximum Opening Width – mm (in)	2060 (81.1)	2130 (83.9)
E Inside Width – mm (in)	1800 (70.8)	1942 (77.6)
Weight – kg (lb)	272 (599.7)	276 (608.5)
Maximum Load Rating – kg (lb)	820 (1807.8)	910 (2006.2)
Maximum Bale Size – mm (ft)	1524 (5)	1828 (6)
Capacity – kg (lb)	820 (1807.8)	910 (2006.2)
Working Pressure – kPa (psi)	21000 (3045.8)	21000 (3045.8)
Required Hydraulics	Standard Flow	
Interface	Skid Steer Coupler	

For more complete information on Cat products, dealer services and industry solutions, visit us on the web at www.cat.com

© 2026 Caterpillar. All Rights Reserved.

Materials and specifications are subject to change without notice. Featured machines in photos may include additional equipment. See your Cat dealer for available options.

CAT, CATERPILLAR, LET'S DO THE WORK, their respective logos, "Caterpillar Corporate Yellow," the "Power Edge" and Cat "Modern Hex" trade dress as well as corporate and product identity used herein, are trademarks of Caterpillar and may not be used without permission.
www.cat.com www.caterpillar.com

AEHQ8651-00 (04-2026)
Replaces AEHQ7809-00
(Global)

