

# CS5 | CP5

VIBRATORY SOIL COMPACTORS



---

CS5, CP5  
Compaction Width

5 m  
1270 mm (50 in)

Meets U.S. EPA Tier 4 Final emission standards.

**CAT**<sup>®</sup>

# CAT<sup>®</sup> CS5 & CP5

PURPOSE-BUILT PERFORMANCE

Cat<sup>®</sup> CS5 and CP5 Vibratory Soil Compactors are designed specifically for utility and residential construction with narrow working widths in applications like trench compaction. These easy-to-use rollers bring reliable, field-proven propel and vibratory systems together with a Cat engine in a compact machine designed for performance.



## DIFFERENT NAME, SAME PERFORMANCE.

Updated names are part of an effort to make all Cat vibratory soil compactor model names simpler. The Cat vibratory soil compactor range has been renamed to identify the weight of the machines in metric tons. While the name may be a little different, Cat vibratory soil compactors continue to provide the same great performance, productivity and durability that you depend on day after day.

### COMPACT SIZE

A maneuverable, transportable roller ideally sized for residential and utility applications.

### OPERATOR FRIENDLY

Designed for easy operation, comfort and visibility.

### RELIABLE PERFORMANCE

Durable, field-proven and engineered to provide performance and reliability that contractors can count on.



A narrow machine width along with a durable, field-proven propel system and gradeability make it ideal for small compaction jobs or working in tight areas. The powertrain is designed to give the CS5 and CP5 the power and traction needed to perform on grades.

---

## COMPACT SIZE FOR SPECIFIC APPLICATIONS

With a machine width of 1.4 m (4.6 ft), the CS5 and CP5 are sized for work in trench applications or compact job sites with limited space. A short turning radius provides good maneuverability in confined work areas. Machine weights are ideal for light compaction of uniform layers over sewer and water pipes.

---

## POWER WHEN YOU NEED IT

The dual propel pump system delivers balanced flow to the rear axle motor and drum drive motor for excellent gradeability and traction in forward and reverse. Additionally, the limited-slip differential provides steady power by transferring torque to the tires for enhanced traction on soft, slippery surfaces. A variable speed range helps deliver maximum torque when climbing grades or when using the optional leveling blade (CP5), as well as the ability to move quickly around the jobsite.

---

## CAT ENGINE

The CS5 and CP5 are powered by a quiet, fuel-efficient Cat C2.8 engine that meets U.S. EPA Tier 4 Final emission standards. Caterpillar's exclusive Intelligent Power Management system monitors operator input and available power to keep the machine working at peak efficiency.

---

## OPTIONAL LEVELING BLADE

Boost the versatility of the CP5 with an optional blade for backfilling, knockdown and light dozing, controlled by a lever on the operator side console.

# DESIGNED FOR THE OPERATOR

## SIMPLE AND COMFORTABLE

---

The CS5 and CP5 vibratory soil compactors are designed with the operator in mind. They feature all-around visibility from the seat, a comfortable operator station and simple controls for easy operation.



### VISIBILITY

The open platform with ROPS/FOPS canopy allows for optimal visibility from the operator station to the front and sides of the machine. A rear vision camera with a large color touchscreen display enhances visibility behind the machine, helping operators work safely and confidently.



### OPERATOR STATION

The operator station has a conveniently-located, multi-function LCD display and control console, an adjustable vinyl seat with a flip-up arm rest and a high-visibility retractable seat belt. Heavy-duty rubber mounts isolate the platform to help reduce transmission of machine vibrations to the operator for a smooth ride. The operating environment is enclosed by handrails and features an anti-skid platform and angled footrest.



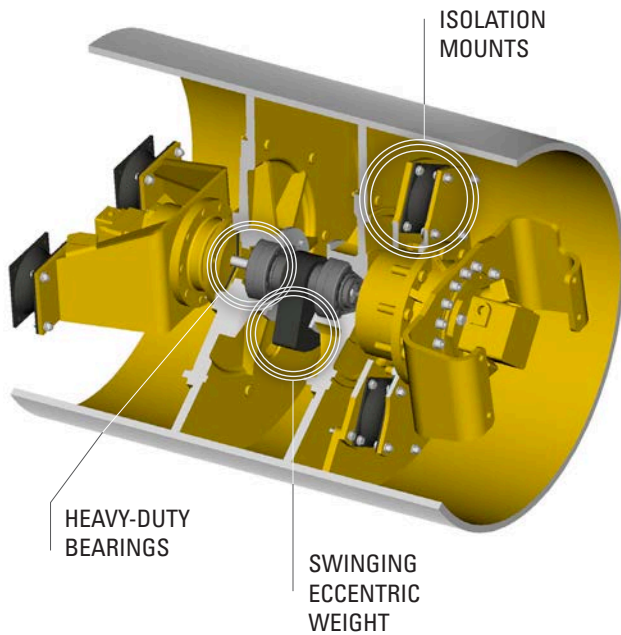
### OPERATOR-FRIENDLY CONTROLS

Simple, intuitive controls are designed with the operator in mind. Single lever control for propel and vibratory ON/OFF provides easy, low-effort operation. All controls are located on the right side of the operator station for convenient access. Digital instrumentation and diagnostics are accessible through the modern, multi-function LCD display.

Propel lever shown for machines equipped with the optional leveling blade.

# TESTED AND PROVEN DESIGN

The time-tested vibratory system is engineered to deliver high compactive effort and performance.



## RELIABLE VIBRATORY SYSTEM

The drum uses a reliable swinging eccentric weight design engineered to deliver high compactive effort and performance you can count on. The CP5 padfoot drum features unique, tapered, oval-faced pads engineered to penetrate deeper and deliver higher weight concentration to maximize compactive effort.

## DESIGNED WITH MORE

A vibratory frequency of 35.8 Hz (2150 vpm) and high amplitude combined with optimal drum weight enables the operator to achieve density in fewer passes while maintaining good tractive effort.

# EASY TO MAINTAIN AND SERVICE

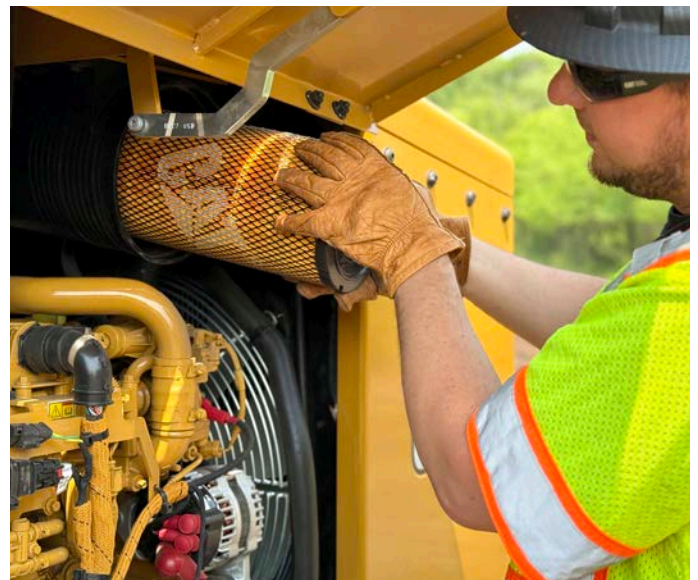
The CS5 and CP5 are easy to maintain and service. Ground-level access to all daily service and routine maintenance points helps reduce machine downtime for greater productivity.

## GROUND-LEVEL ACCESS

Large doors provide walk-up accessibility to perform service and check engine oil, hydraulic fluid and coolant levels. A rear-mounted cooling system provides easy access for cleaning. The operator platform tilts forward to conveniently reach the hydraulic pumps and the hydraulic oil cooler tilts rearward for additional access to the radiator.

## EXTENDED MAINTENANCE INTERVALS

Long maintenance intervals help minimize operating costs. Engine oil service intervals are every 500 hours, 1000 hours eccentric weight housing oil, hydraulic oil every 3000 hours and coolant every 12000 hours with sampling. Maintenance-free Cat batteries are mounted in the rear of the machine and are accessible through the swing out rear grill.



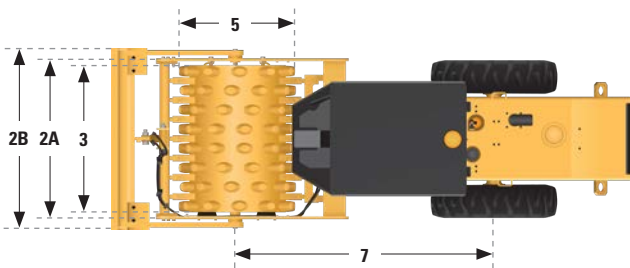
# TECHNICAL SPECIFICATIONS

Model availability and configurations may vary by region. Please check with your Cat dealer for specific offerings and availability in your area.

POWERTRAIN		
Engine Model	Cat® C2.8	
Meets U.S. EPA Tier 4 Final, emission standards.		
Engine Power @ 2,400 rpm – ISO 14396	55.4 kW	74.3 hp
Gross Power @ 2,400 rpm – SAE J1995	56.5 kW	75.8 hp
Net Power @ 2,400 rpm – ISO 9249	53.7 kW	72.0 hp
Net Power @ 2,400 rpm – SAE J1349	53.7 kW	72.0 hp
Number of Cylinders	4	
Displacement	2.8 L	171 in <sup>3</sup>
Stroke	110 mm	4.3 in
Bore	90 mm	3.5 in
Build Number	04A	
Maximum Travel Speed (Forward or Reverse)	8.8 km/h	5.5 mph
Theoretical Gradeability, no vibration	50%	

- Advertised power is tested per the specified standard in effect at the time of manufacture.
- Net power advertised is the power available at the engine flywheel when equipped with a fan at maximum speed, air cleaner, clean emissions module, and alternator.
- Actual gradeability may vary based on site conditions and machine configuration. Refer to the Operation and Maintenance Manual for more information.

DIMENSIONS			
<b>1A</b>	Overall Length	4155 mm	164 in
<b>1B</b>	Optional Leveling Blade (CP5)	4555 mm	179 in
<b>2A</b>	Overall Width	1393 mm	55 in
<b>2B</b>	Optional Leveling Blade (CP5)	1575 mm	62 in
<b>3</b>	Drum Width	1270 mm	50 in
<b>4</b>	Drum Shell Thickness	20 mm	0.8 in
<b>5</b>	Drum Diameter	1016 mm	40 in
<b>6</b>	Overall Height	2525 mm	99 in
<b>7</b>	Wheelbase	2240 mm	88 in
<b>8</b>	Ground Clearance	348 mm	13.7 in
<b>9</b>	Curb Clearance	344 mm	13.5 in
<b>10</b>	Optional Leveling Blade Height (CP5)	559 mm	22 in
	Inside Turning Radius	2625 mm	103 in
	Hitch Articulation Angle	38°	
	Hitch Oscillation Angle	15°	



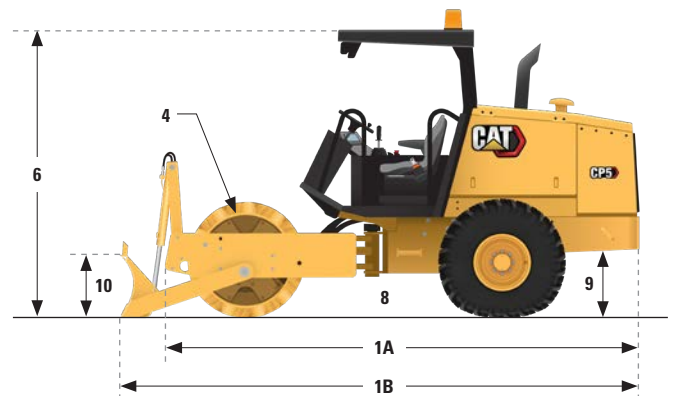
WEIGHTS		
<b>CS5 with ROPS/FOPS Canopy</b>		
Operating Weight	4570 kg	10,075 lb
Weight at Drum	2100 kg	4625 lb
<b>CP5 with ROPS/FOPS Canopy and Oval Padfoot Drum</b>		
Operating Weight	4675 kg	10,307 lb
Leveling Blade	4995 kg	11,012 lb
Weight at Drum	2210 kg	4872 lb
Leveling Blade	2640 kg	5820 lb

Operating weights are approximate and consider full fluids and 80 kg (176 lb) operator.

VIBRATION SYSTEM		
Frequency	35.8 Hz	2150 vpm
Nominal Amplitude @ 30.5 Hz (1830 vpm)	1.3 mm	0.051 in
Centrifugal Force @ 30.5 Hz (1830 vpm)	78 kN	17,535 lbF
VM Class	VM0	
Static Linear Load		
CS5	16.1 kg/cm	90.2 lbs/in

SERVICE REFILL CAPACITIES		
Fuel Tank	113 L	29.9 gal
Cooling System	15.7 L	4.1 gal
Engine Oil with Filter	8.2 L	2.2 gal
Eccentric Weight Housings (combined)	53 L	14 gal
Axle and Final Drives	7.1 L	1.9 gal
Hydraulic Tank	35.6 L	9.4 gal

CP5 PADFOOT DRUM		
Number of Pads	88	
Number of Chevrons	11	
Oval Pads		
Pad Height	88 mm	3.5 in
Pad Face Area	79.3 cm <sup>2</sup>	12.3 in <sup>2</sup>



# STANDARD & OPTIONAL EQUIPMENT

Features, standard and optional equipment may vary. Please check with your local Cat dealer for specific offerings and availability in your area.

OPERATOR ENVIRONMENT	STANDARD	OPTIONAL
ROPS/FOPS Canopy with Handrails, Anti-skid Platform, Footrest	●	
Vinyl Non-suspension Seat	●	
LCD Display with Lockable Vandalism Guard	●	
Rear Vision Camera System with Color Touchscreen Display	●	
High Visibility 76 mm (3 in) Seat Belt	●	
12-Volt Power Outlet	●	
Horn, Backup Alarm	●	

VIBRATORY SYSTEM	STANDARD	OPTIONAL
Smooth Drum	● CS5	
Padfoot Drum – Oval Pads	● CP5	
Single Amplitude, Single Frequency	●	
Adjustable Steel Scraper	●	
Leveling Blade		○ CP5

ELECTRICAL	STANDARD	OPTIONAL
12-Volt Electrical System	●	
85-Amp Alternator	●	
600 Cold-cranking Amps Battery Capacity	●	

CAT TECHNOLOGY	STANDARD	OPTIONAL
VisionLink™	●	

POWERTRAIN	STANDARD	OPTIONAL
Cat C2.8 Engine	●	
Air Cleaner, Dual Element	●	
Two-Speed Throttle Switch	●	
Dual Propel Pumps; One for Drum Drive, One for Rear Axle	●	
Fuel Filter, Water Separator, Priming Pump, Water Indicator	●	
Radiator/Hydraulic Oil Cooler	●	
Dual Braking System	●	
Single-Speed Hydrostatic Transmission	●	
Limited Slip Differential	●	

OTHER	STANDARD	OPTIONAL
Lockable Engine Enclosure, Hydraulic and Fuel Tanks	●	
Sight Gauges for Hydraulic Oil Level and Radiator Coolant Level	●	
Scheduled Oil Sampling (S•O•S <sup>SM</sup> ) Ports: Engine Oil, Hydraulic Oil, and Coolant	●	
LED Working Lights (4)	●	
Amber Rotating Beacon		○

For more complete information on Cat products, dealer services and industry solutions, visit us on the web at [www.cat.com](http://www.cat.com)

Materials and specifications are subject to change without notice. Featured machines in photos may include additional equipment. See your Cat dealer for available options.

© 2026 Caterpillar. All Rights Reserved. CAT, CATERPILLAR, LET'S DO THE WORK, their respective logos, "Caterpillar Corporate Yellow", the "Power Edge" and Cat "Modern Hex" trade dress as well as corporate and product identity used herein, are trademarks of Caterpillar and may not be used without permission. VisionLink is a trademark of Caterpillar Inc., registered in the United States and in other countries.

[www.cat.com](http://www.cat.com) [www.caterpillar.com](http://www.caterpillar.com)

QEHQ3331 (02/2026)  
Build Number: 04A  
(N Am)

