



# 395

## Long Reach Hydraulic Excavator

# Technical Specifications

Configurations and features may vary by region. Please consult your Cat® dealer for availability in your area.

### Table of Contents

#### 395 Long Reach Hydraulic Excavator Specialty Configurations

<b>Specifications</b> .....	<b>2</b>	Sound Performance .....	3
Engine .....	2	Air Conditioning System .....	3
Swing Mechanism .....	2	Operating Weights and Ground Pressures .....	4
Weights .....	2	Major Component Weights .....	4
Track .....	2	Dimensions .....	5
Drive .....	2	Working Ranges .....	7
Hydraulic System .....	2		
Service Refill Capacity .....	3	<b>Standard and Optional Equipment</b> .....	<b>8</b>
Standards .....	3	<b>Dealer Installed Kits and Attachments</b> .....	<b>10</b>
		<b>Cab Options</b> .....	<b>11</b>
		<b>395 LRE Environmental Declaration</b> .....	<b>12</b>

# 395 LRE Hydraulic Excavator Specifications

## Engine

Engine Model	Cat® C18	
Net Power		
ISO 9249	404 kW	542 hp
ISO 9249 (DIN)	550 hp (metric)	
Engine Power		
ISO 14396	405 kW	543 hp
ISO 14396 (DIN)	551 hp (metric)	
Bore	145 mm	6 in
Stroke	183 mm	7 in
Displacement	18.1 L	1105 in <sup>3</sup>
Biodiesel capability	Up to B20 <sup>(1)</sup>	

- Meets U.S. EPA Tier 4 Final, EU Stage V, Japan 2014 and Korea Stage V emission standards.
- Recommended for use up to 4500 m (14,764 ft) altitude with engine power derate above 3000 m (9,842.5 ft).
- Advertised power is tested per the specified standard in effect at the time of manufacture.
- Net power advertised is the power available at the flywheel when the engine is equipped with fan, air intake system, exhaust system and alternator.
- Rated speed at 1,900 rpm

<sup>(1)</sup>Cat diesel engines are required to use ULSD (ultra-low sulfur diesel fuel with 15 ppm of sulfur or less) and are compatible\* with ULSD blended with the following lower-carbon intensity fuels\*\* up to:

- ✓ 20% biodiesel FAME (fatty acid methyl ester) \*\*\*
- ✓ 100% renewable diesel, HVO (hydrotreated vegetable oil) and GTL (gas-to-liquid) fuels

Refer to guidelines for successful application. Please consult your Cat dealer or “Caterpillar Machine Fluids Recommendations” (SEBU6250) for details.

\* While Cat engines are compatible with these alternative fuels, some regions may not allow their use.

\*\* Tailpipe greenhouse gas emissions from lower-carbon intensity fuels are essentially the same as traditional fuels.

\*\*\* Engines with no aftertreatment devices are compatible with higher blends, up to 100% biodiesel (for use of blends higher than 20% biodiesel, consult your Cat dealer).

## Swing Mechanism

Maximum Swing Torque	363 kN·m	267,730 lbf·ft
----------------------	----------	----------------

## Weights

Operating Weight	102 000 kg	224,900 lb
------------------	------------	------------

- Long Undercarriage with frame extension, 12.5 m (41'0") LRE Boom, LRE 9.5 m (31'2") stick, HD 2.6 m<sup>3</sup> (3.4 yd<sup>3</sup>) bucket, 900 mm (35") double grouser shoes, and 15.4 mt (34,060 lb) counterweight.
- Long Undercarriage with frame extension, 15.5 m (50'10") LRE Boom, LRE 11.8 m (38'9") stick, Heavy Duty (HD) 1.97 m<sup>3</sup> (2.58 yd<sup>3</sup>) bucket, 900 mm (35") double grouser shoes, and 21.6 mt (47,600 lb) counterweight.

## Track

Standard Track Shoes Width	900 mm	35 in
Optional Track Shoes Width	650 mm	26 in
Optional Track Shoes Width	750 mm	30 in
Number of Shoes (each side)	51	
Number of Track Rollers (each side)	9	
Number of Carrier Rollers (each side)	3	

## Drive

Gradeability	30°/58%	
Maximum Travel Speed	4.5 km/h	2.8 mph
Maximum Drawbar Pull	580 kN	130,389 lbf

## Hydraulic System

Main System – Maximum Flow (Implement)	1064 L/min (532 × 2 pumps)	281 gal/min (141 × 2 pumps)
Swing System – Maximum Flow	295 L/min	78 gal/min
Maximum Pressure – Equipment – Implement	37 000 kPa	5,366 psi
Maximum Pressure – Travel	35 000 kPa	5,076 psi
Maximum Pressure – Swing	31 000 kPa	4,496 psi
Boom Cylinder – Bore	210 mm	8 in
Boom Cylinder – Stroke	1967 mm	77 in
Stick Cylinder – Bore	220 mm	8.7 in
Stick Cylinder – Stroke	2262 mm	89 in
Bucket Cylinder – Bore	150 mm	6 in
Bucket Cylinder – Stroke	1151 mm	45 in
CB2 Bucket Cylinder – Bore	135 mm	5 in
CB2 Bucket Cylinder – Stroke	1156 mm	46 in

# 395 LRE Hydraulic Excavator Specifications

## Service Refill Capacity

Fuel Tank Capacity	1220 L	322.3 gal
Cooling System	71 L	18.8 gal
Engine Oil (with filter)	67 L	17.7 gal
Swing Drive (each)	24 L	6.3 gal
Final Drive (each)	20 L	5.3 gal
Hydraulic System (including tank)	793 L	209.5 gal
Hydraulic Tank (including suction pipe)	372 L	98.2 gal
Diesel Exhaust Fluid (DEF) Tank	80 L	21.1 gal

## Standards

Brakes	ISO 10265: 2008
Operator Protective Guards (OPG) (optional)	ISO 10262:1998 Level II

## Sound Performance

ISO 6395:2008 (external)	109 dB(A)
ISO 6396:2008 (internal)	73 dB(A)

- External Sound – The spectator sound power level is measured according to the test procedures and conditions specified in ISO 6395:2008 for a Cat machine that is properly equipped and maintained. The measurements were conducted at 70% of the maximum engine cooling fan speed.
- Internal Sound – The operator sound pressure level is measured according to the test procedures and conditions specified in ISO 6396:2008 for a cab offered by Caterpillar, when properly installed and maintained and tested with the door and windows closed. The measurements were conducted at 70% of the maximum engine cooling fan speed.
- Hearing protection may be needed when operating with an open operator station and cab (when not properly maintained for doors/windows open) for extended periods or in noisy environment(s).

## Air Conditioning System

- The air conditioning system on this machine contains the fluorinated greenhouse gas refrigerant R134a or R1234yf. See the label or instruction manual for identification of the gas.
  - If equipped with R134a (Global Warming Potential = 1430), the system contains 1.3 kg (2.9 lb) of refrigerant, which has a CO<sub>2</sub> equivalent of 1.859 metric tonnes (2.049 tons).
  - If equipped with R1234yf (Global Warming Potential = 0.501), the system contains 1.1 kg (2.4 lb) of refrigerant which has a CO<sub>2</sub> equivalent of 0.001 metric tonnes (0.001 tons).

# 395 LRE Hydraulic Excavator Specifications

## Operating Weights and Ground Pressures

	650 mm (26") Double Grouser Shoes		750 mm (30") Double Grouser Shoes		900 mm (35") Double Grouser Shoes	
	Weight	Ground Pressure	Weight	Ground Pressure	Weight	Ground Pressure
	kg (lb)	kPa (psi)	kg (lb)	kPa (psi)	kg (lb)	kPa (psi)
<b>21.6 mt (47,600 lb) Counterweight + Long Undercarriage with Frame Extension Base Machine</b>						
15.5 m (50'10") LRE Boom + 11.8 m (38'9") LRE Stick + 1.97 m³ (2.58 yd³) HD Bucket	111 300 (245,400)	151.2 (21.9)	112 200 (247,400)	132.1 (19.2)	113 300 (249,700)	111.1 (16.1)
<b>15.4 mt (34,060 lb) Counterweight + Long Undercarriage with Frame Extension Base Machine</b>						
12.5 m (41'0") LRE Boom + 9.5 m (31'2") LRE Stick + 2.60 m³ (3.40 yd³) HD Bucket	100 100 (220,700)	138.6 (20.1)	101 000 (222,700)	121.2 (17.6)	102 000 (224,900)	102.0 (14.8)

All operating weights include a 90% fuel tank with 75 kg (165 lb) operator.

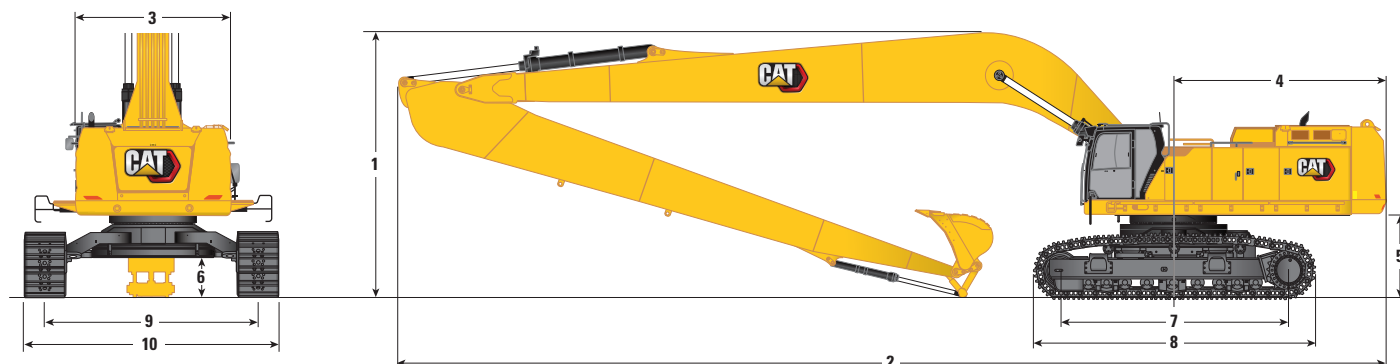
## Major Component Weights

	kg	lb
Base Machine Weight (including upperframe, Long undercarriage, counterweight, boom cylinders – without boom, stick, bucket, stick cylinder, bucket cylinder, tracks, fuel, operator)		
15.4 mt (34,060 lb) Counterweight, Swing Frame, Base Frame with Track Rollers and Carrier Rollers	70 970	156,460
Counterweight, Swing Frame, Base Frame with Track Rollers and Carrier Rollers	76 970	169,700
Track Shoes:		
650 mm (26") Width, 20.5 mm (0.8") Thick, Double Grouser Track Shoes	9290	20,470
750 mm (30") Width, 20.5 mm (0.8") Thick, Double Grouser Track Shoes	10 160	22,400
900 mm (35") Width, 20.5 mm (0.8") Thick, Double Grouser Track Shoes	11 220	24,740
Two Boom Cylinders	1820	4,010
Weight of 90% Fuel Tank and 75 kg (165 lb) Operator	1010	2,230
Counterweight:		
15.4 mt (34,060 lb) Counterweight	15 450	34,060
21.6 mt (47,600 lb) Counterweight	21 600	47,620
Swing Frames:		
Swing Frame	9100	20,060
Long Undercarriage:		
Base Frame with Track Rollers and Carrier Rollers	32 740	72,180
Booms (including lines, pins, stick cylinder):		
12.5 m (41'0") LRE Boom	11 300	24,910
15.5 m (50'10") LRE boom	14 510	31,990
Sticks (including lines, pins, bucket cylinder, bucket linkage):		
9.5 m (31'2") LRE Stick	5660	12,480
11.8 m (38'9") LRE stick	5930	13,070
Buckets (without linkage):		
1.97 m³ (2.58 yd³) HD	1290	2,850
2.60 m³ (3.40 yd³) HD	1990	4,400
Frame Extension	8120	17,910

# 395 LRE Hydraulic Excavator Specifications

## Dimensions

All dimensions are approximate and may vary depending on bucket selection.



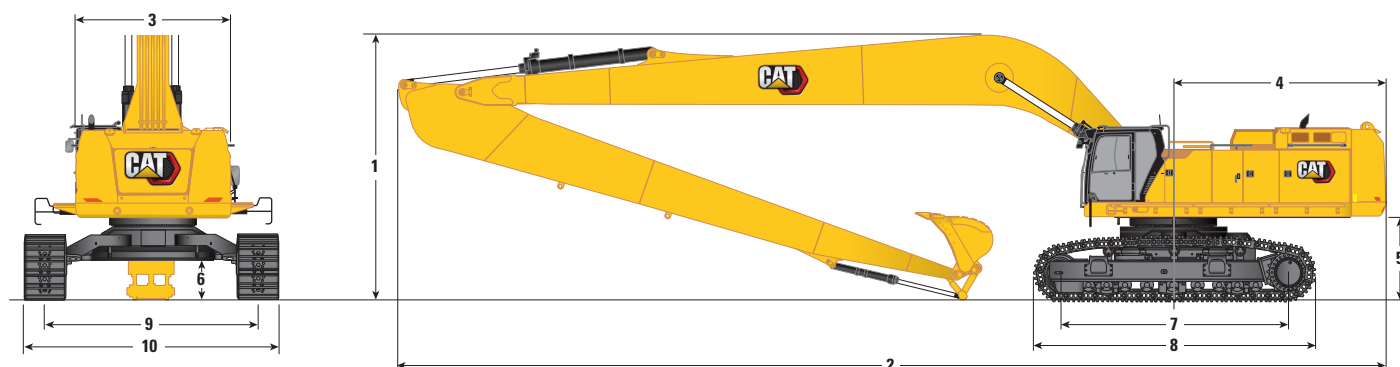
Boom Options		LRE Boom 12.5m (41'0")		LRE Boom 15.5 m (50'10")	
Stick Options		LRE Stick 9.5 m (31'2")		LRE Stick 11.8 m (38'9")	
1 Machine Height:					
Cab Height	3910 mm	12'10"	3910 mm	12'10"	
OPG Height	4050 mm	13'4"	4050 mm	13'4"	
Handrail Height	3990 mm	13'1"	3990 mm	13'1"	
With Boom/Stick/Bucket Installed	8476 mm	27'10"	11 860 mm	38'11"	
With Boom/Stick Installed	8476 mm	27'10"	11 860 mm	38'11"	
With Boom/Stick/Bucket Installed (with auxiliary lines)	8476 mm	27'10"	11 860 mm	38'11"	
With Boom/Stick Installed (with auxiliary lines)	8476 mm	27'10"	11 860 mm	38'11"	
2 Machine Length:					
With Boom/Stick/Bucket Installed	17 930 mm	58'10"	19 900 mm	65'3"	
With Boom/Stick Installed	17 930 mm	58'10"	19 900 mm	65'3"	
With Boom/Stick/Bucket Installed (with auxiliary lines)	17 930 mm	58'10"	19 900 mm	65'3"	
With Boom/Stick Installed (with auxiliary lines)	17 930 mm	58'10"	19 900 mm	65'3"	
3 Upperframe Width					
Without Walkways	3490 mm	11'5"	3490 mm	11'5"	
With Walkways	4510 mm	14'10"	4510 mm	14'10"	
Walkways Width	500 mm	1'8"	500 mm	1'8"	
4 Tail Swing Radius	4840 mm	15'11"	4840 mm	15'11"	
5 Counterweight Clearance	1880 mm	6'2"	1880 mm	6'2"	
Bucket Type	HD		HD		
Bucket Capacity	2.60 m³	3.40 yd³	1.97 m³	2.58 yd³	
Bucket Tip Radius	1837 mm	6'0"	1659 mm	5'5"	

(continued on next page)

# 395 LRE Hydraulic Excavator Specifications

## Dimensions *(continued)*

All dimensions are approximate and may vary depending on bucket selection.

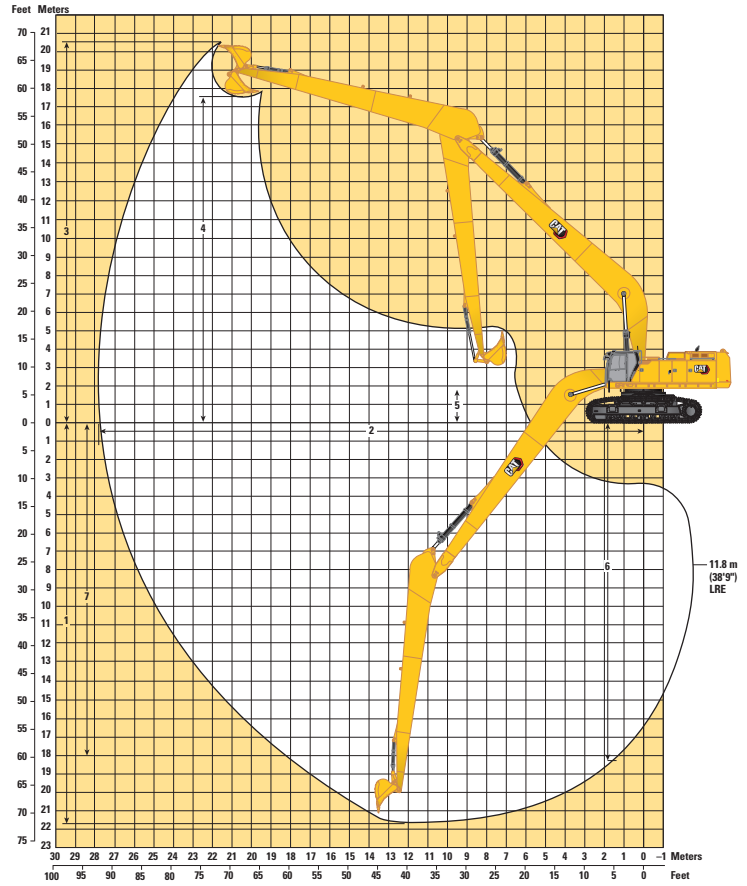
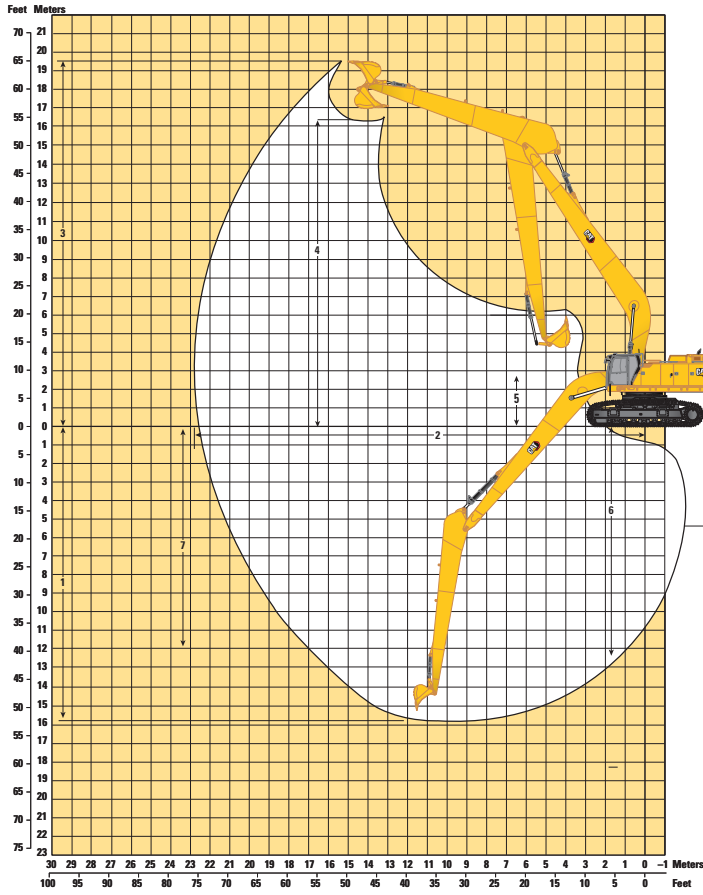


Boom Options	LRE Boom 12.5 m (41'0")		LRE Boom 15.5 m (50'10")	
Stick Options	LRE Stick 9.5 m (31'2")		LRE Stick 11.8 m (38'9")	
<b>6</b> Ground Clearance	915 mm	3'0"	915 mm	3'0"
<b>7</b> Length to Center of Rollers	5120 mm	16'10"	5120 mm	16'10"
<b>8</b> Track Length	6350 mm	20'10"	6350 mm	20'10"
<b>9</b> Track Gauge – with Frame Extension	4840 mm	15'11"	4840 mm	15'11"
Track Width – with Frame Extension:				
650 mm (26") Shoe	5490 mm	18'0"	5490 mm	18'0"
750 mm (30") Shoe	5590 mm	18'4"	5590 mm	18'4"
900 mm (35") Shoe	5740 mm	18'10"	5740 mm	18'10"
<b>10</b> Undercarriage Width (with steps) – with Frame Extension:				
650 mm (26") Shoe	5780 mm	19'0"	5780 mm	19'0"
750 mm (30") Shoe	5780 mm	19'0"	5780 mm	19'0"
900 mm (35") Shoe	5780 mm	19'0"	5780 mm	19'0"
Bucket Type	HD		HD	
Bucket Capacity	2.60 m <sup>3</sup>	3.40 yd <sup>3</sup>	1.97 m <sup>3</sup>	2.58 yd <sup>3</sup>
Bucket Tip Radius	1837 mm	6'0"	1659 mm	5'5"

# 395 LRE Hydraulic Excavator Specifications

## Working Ranges

All dimensions are approximate and may vary depending on bucket selection.



### Boom Options

#### LRE Boom 12.5 m (41'0")

#### LRE Boom 15.5 m (50'10")

### Stick Options

#### LRE Stick 9.5 m (31'2")

#### LRE Stick 11.8 m (38'9")

1 Maximum Digging Depth	15 770 mm	51'9"	21 700 mm	71'2"
2 Maximum Reach at Ground Line	22 610 mm	74'2"	27 820 mm	91'3"
3 Maximum Cutting Height	19 470 mm	63'11"	20 530 mm	67'4"
4 Maximum Loading Height	16 200 mm	53'2"	17 580 mm	57'8"
5 Minimum Loading Height	2810 mm	9'3"	1980 mm	6'6"
6 Maximum Depth Cut for 2440 mm (8ft) Level Bottom	15 700 mm	51'6"	21 640 mm	71'0"
7 Maximum Vertical Wall Digging Depth	11 930 mm	39'2"	18 290 mm	60'0"
Bucket Digging Force (ISO)	215 kN	48,290 lbf	190 kN	42,600 lbf
Stick Digging Force (ISO)	172 kN	38,580 lbf	144 kN	32,310 lbf
Bucket Type	HD		HD	
Bucket Capacity	2.60 m <sup>3</sup>	3.40 yd <sup>3</sup>	1.97 m <sup>3</sup>	2.58 yd <sup>3</sup>
Bucket Tip Radius	1837 mm	6'0"	1659 mm	5'5"

# 395 LRE Standard and Optional Equipment

## Standard and Optional Equipment

Standard and optional equipment may vary. Consult your Cat® dealer for details.

	Standard	Optional		Standard	Optional
<b>BOOMS, STICKS AND LINKAGES</b>			<b>HYDRAULIC SYSTEM</b>		
12.5 m (41'0") LRE boom		✓	Boom and stick regeneration circuit	✓	
15.5 m (50'10") LRE boom		✓	Electronic main control valve	✓	
9.5 m (31'2") LRE stick		✓	Dedicated closed loop swing circuit	✓	
11.8 m (38'9") LRE stick		✓	Automatic hydraulic oil warmup	✓	
CB2 linkage without lifting eye	✓		Automatic swing parking brake	✓	
Submarine linkage and sticks sensors protection	✓		Anti-reaction valve	✓	
<b>CAT® TECHNOLOGY</b>			High performance hydraulic return filter	✓	
Cat Equipment Management:			Two speed travel	✓	
– VisionLink™	✓ <sup>1</sup>		Bio hydraulic oil capability	✓	
– Remote Flash	✓		Advanced tool control		✓
– Remote Troubleshoot	✓		Medium-pressure auxiliary circuit		✓
– Work tool recognition and tracking (PL161)	✓		Quick coupler circuit		✓
Cat Grade:			Hydraulic efficiency monitoring		✓
– Cat Grade with 2D	✓				
Cat Payload:					
– On-the-go weighing	✓				
– Semiautomatic calibration	✓				
– Payload/cycle information	✓				
<b>ELECTRICAL SYSTEM</b>					
Maintenance-free 1,400 CCA batteries (×2)	✓				
Centralized electrical disconnect switch	✓				
Chassis light	✓				
LED boom and cab lights		✓			
1,800 lumen LED premium surround lights		✓			
<b>ENGINE</b>					
Cold start block heater		✓			
Three selectable modes: Power, Smart, Eco	✓				
Automatic engine speed control	✓				
Up to 4500 m (14,760 ft) altitude capability	✓				
52° C (126° F) high-ambient cooling capacity	✓				
–18° C (–0.4° F) cold start capability	✓				
–32° C (–25° F) cold start capability		✓			
Hydraulic reverse fan	✓				
Double element air filter with integrated pre-cleaner	✓				
Three vertical side-by-side cooling system	✓				
Remote disable	✓				
95 Amp alternator	✓				

(continued on next page)

<sup>1</sup>Provides core telematics data to manage health, maintenance insights, and condition monitoring. Other plans available for more comprehensive data reporting. Consult your Cat dealer for details.



# 395 LRE Standard and Optional Equipment

## Standard and Optional Equipment *(continued)*

Standard and optional equipment may vary. Consult your Cat dealer for details.

	Standard	Optional		Standard	Optional
<b>SAFETY AND SECURITY</b>			<b>SERVICE AND MAINTENANCE</b>		
Caterpillar One Key security system	✓		Integrated vehicle health management system	✓	
2D E-Fence:	✓		Auto lube ready	✓	
– E-ceiling			Reversing cooling fan	✓	
– E-floor			Grouped location for engine oil and fuel filters	✓	
– E-swing			Fast-fill fuel system		✓
– E-wall			S·O·S <sup>SM</sup> ports	✓	
– E-cab avoidance			QuickEvac <sup>TM</sup> maintenance ready		✓
Lockable external tool/storage box	✓		Electric refueling pump with auto shutoff		✓
Lockable door, fuel, and hydraulic tank locks	✓		<b>UNDERCARRIAGE AND STRUCTURES</b>		
Lockable fuel drain compartment	✓		Long undercarriage	✓	
Lockable disconnect switch	✓		650 mm (26") double grouser track shoes		✓
Service platforms with anti-skid plate	✓		750 mm (30") double grouser track shoes		✓
Full handrail mount on platform	✓		900 mm (35") double grouser track shoes		✓
Mirror package	✓		Grease lubricated track	✓	
Signaling/warning horn	✓		Three-piece segmented track guiding guards		✓
Travel alarm	✓		Two-piece full-length track guiding guards		✓
Swing alarm		✓	Swivel guard	✓	
Ground-level secondary engine shutoff switch	✓		HD bottom guard	✓	
Rear and right-hand-sideview cameras	✓		HD travel motor guard	✓	
360° visibility		✓	15.4 mt (34,060 lb) counterweight		✓
Boom lowering check valve		✓	21.6 mt (47,600 lb) counterweight		✓
Stick lowering check valve		✓	Towing eye on base frame	✓	
Walkway	✓		LRE track extension frame	✓	
Tilt-up walkway		✓			
Inspection lighting		✓			
Cat Command (remote control)		✓			

## Dealer Installed Kits and Attachments

Attachments may vary. Consult your Cat dealer for details.

### CAB

- Radial lower wiper (for deluxe cab only)
- Parallel wiper kit (for deluxe cab only)
- Joystick with horizontal sliders
- Left Hand (LH)/Right Hand (RH) electrical pedal for tool control
- Dual exit rear window kit
- Front windshield laminated glass (P5A glass, EU demolition regulation)

### SAFETY AND SECURITY

- Bluetooth® key fob
- 76 mm (3") retractable seat belt
- Cat Detect – People Detection
- Cat Command – Remote control kit

### GUARDS

- OPG (not compatible with cab light cover, rain protector)
- Mesh guard full front (not compatible with cab light cover, rain protector)
- Mesh guard lower half front
- Rain protector for front windshield plus cab light cover

### OTHER ATTACHMENTS

- Global Navigation Satellite System (GNSS) antennae
- Submarine kit

## Cab Options

	Deluxe	Premium
Sound suppressed cab with viscous mounts	●	●
Operator Protective Guards (OPG)	○	○
High-resolution 254 mm (10") LCD touchscreen monitor	●	●
Additional high-resolution LCD touchscreen monitor for Cat Grade 2D and 3D	○	○
Automatic bi-level air conditioner	●	●
Jog dial and shortcut keys for monitor control	●	●
Keyless push-to-start engine control	●	●
Height-adjustable console, infinite with no tool	●	●
Tilt-up left-side console	●	●
Cat Stick Steer	○	○
Auxiliary relay	○	○
Heated seat with air-adjustable suspension	●	X
Heated and cooled seat with automatic adjustable suspension	X	●
51 mm (2") orange seat belt	●	●
Bluetooth integrated radio (including USB, auxiliary port and microphone)	●	●
2 × 12V DC outlets	●	●
Cup holder and storage compartments	●	●
Fixed one-piece windshield	X	○
Openable two-piece front window	●	○
Upper radial wiper with washer	●	X
Parallel wiper with washer	X	●
Openable polycarbonate skylight hatch	●	○
Fixed glass laminated skylight	X	○
LED dome light	●	●
Floor welcome light	●	●
Roller front sunscreen	●	●
Roller rear sunscreen	○	●
Rear window emergency exit	●	●
Washable floor mat	●	●
Beacon ready	●	●

● Standard

○ Optional

X Not available

# 395 LRE Environmental Declaration

The following information applies to the machine at the time of final manufacture as configured for sale in the regions covered in this document. The content of this declaration is valid as of the date issued; however, content related to machine features and specifications are subject to change without notice. For additional information, please see the machine's Operation and Maintenance Manual.

For more information on sustainability in action and our progress, please visit <https://www.caterpillar.com/en/company/sustainability>.

## Engine

- The Cat® C18 engine meets U.S. EPA Tier 4 Final, EU Stage V, Korea Stage V, and Japan 2014 emission standards.
- Cat diesel engines are required to use ULSD (ultra-low sulfur diesel fuel with 15 ppm of sulfur or less) and are compatible\* with ULSD blended with the following lower-carbon intensity fuels\*\* up to:
  - ✓ 20% biodiesel FAME (fatty acid methyl ester) \*\*\*
  - ✓ 100% renewable diesel, HVO (hydrotreated vegetable oil) and GTL (gas-to-liquid) fuels

Refer to guidelines for successful application. Please consult your Cat dealer or "Caterpillar Machine Fluids Recommendations" (SEBU6250) for details.

- \* *While Cat engines are compatible with these alternative fuels, some regions may not allow their use.*
- \*\* *Tailpipe greenhouse gas emissions from lower-carbon intensity fuels are essentially the same as traditional fuels.*
- \*\*\* *Engines with no aftertreatment devices are compatible with higher blends, up to 100% biodiesel (for use of blends higher than 20% biodiesel, consult your Cat dealer).*

## Air Conditioning System

- The air conditioning system on this machine contains the fluorinated greenhouse gas refrigerant R134a or R1234yf. See the label or instruction manual for identification of the gas.
  - If equipped with R134a (Global Warming Potential = 1430), the system contains 1.3 kg (2.9 lb) of refrigerant, which has a CO<sub>2</sub> equivalent of 1.859 metric tonnes (2.049 tons).
  - If equipped with R1234yf (Global Warming Potential = 0.501), the system contains 1.1 kg (2.4 lb) of refrigerant which has a CO<sub>2</sub> equivalent of 0.001 metric tonnes (0.001 tons).

## Paint

- Based on best available knowledge, the maximum allowable concentration, measured in parts per million (PPM), of the following heavy metals in paint are:
  - Barium < 0.01%
  - Cadmium < 0.01%
  - Chromium < 0.01%
  - Lead < 0.01%

## Sound Performance

ISO 6395:2008 (external) – 109 dB(A)

ISO 6396:2008 (internal) – 73 dB(A)

- External Sound – The spectator sound power level is measured according to the test procedures and conditions specified in ISO 6395:2008 for a Cat machine that is properly equipped and maintained. The measurements were conducted at 70% of the maximum engine cooling fan speed.
- Internal Sound – The operator sound pressure level is measured according to the test procedures and conditions specified in ISO 6396:2008 for a cab offered by Caterpillar, when properly installed and maintained and tested with the door and windows closed. The measurements were conducted at 70% of the maximum engine cooling fan speed.
- Hearing protection may be needed when operating with an open operator station and cab (when not properly maintained for doors/windows open) for extended periods or in noisy environment(s).

## Oils and Fluids

- Caterpillar factory fills with ethylene glycol coolants. Cat Diesel Engine Antifreeze/Coolant (DEAC) and Cat Extended Life Coolant (ELC) can be recycled. Consult your Cat dealer for more information.
- Cat Bio HYDO™ Advanced is an EU Ecolabel approved biodegradable hydraulic oil.
- Additional fluids are likely to be present, please consult the Operations and Maintenance Manual or the Application and Installation guide for complete fluid recommendations and maintenance intervals.

## Features and Technology

- The following features and technology may contribute to fuel savings and/or carbon reduction. Features may vary. Consult your Cat dealer for details.
  - Advanced hydraulic systems balance power and efficiency
  - Smart mode matches machine power to digging requirements automatically
  - Eco mode minimizes fuel consumption for light applications
  - One-touch low idle with automatic engine speed control
  - Extended maintenance intervals reduce fluid and filter consumption

## Recycling

- The materials included in machines are categorized as below with approximate weight percentage. Because of variations of product configurations, the following values in the table may vary.

Material Type	Weight Percentage
Steel	89.46%
Iron	5.97%
Nonferrous Metal	1.26%
Mixed Metal	0.08%
Mixed-Metal and Nonmetal	0.74%
Plastic	0.11%
Rubber	0.35%
Mixed Nonmetallic	0.24%
Fluid	1.27%
Other	0.52%
Uncategorized	0.00%
Total	100%

- A machine with higher recyclability rate will ensure more efficient usage of valuable natural resources and enhance End-of-Life value of the product. According to ISO 16714:2008 (Earthmoving machinery – Recyclability and recoverability – Terminology and calculation method), recyclability rate is defined as percentage by mass (mass fraction in percent) of the new machine potentially able to be recycled, reused, or both.

All parts in the bill of material are first evaluated by component type based on a list of components defined by the ISO 16714:2008 and Japan CEMA (Construction Equipment Manufacturers Association) standards. Remaining parts are further evaluated for recyclability based on material type.

Because of variations of product configurations, the following value in the table may vary.

Recyclability – 98%



オフロード法2014年  
基準適合



国土交通省  
超低騒音型建設機械

For more complete information on Cat products, dealer services, and industry solutions, visit us on the web at [www.cat.com](http://www.cat.com)

© 2026 Caterpillar  
All rights reserved

Materials and specifications are subject to change without notice. Featured machines in photos may include additional equipment. See your Cat dealer for available options.

CAT, CATERPILLAR, LET'S DO THE WORK, VisionLink, their respective logos, "Caterpillar Corporate Yellow," the "Power Edge" and Cat "Modern Hex" trade dress as well as corporate and product identity used herein, are trademarks of Caterpillar and may not be used without permission.

Based on the Labor, Safety and Health Laws in Japan, employer of small construction equipment are required to provide specific training for all operators on machines with ship weight less than 3 metric ton. For machines greater than 3 metric ton, operator needs to obtain operator license certification from a Government approved registered training school.

AEXQ4640-00 (02-2026)  
Build Number: 07H  
(Japan)

