

TILTING DITCH CLEANING BUCKETS

MINI HYDRAULIC EXCAVATORS
BACKHOE LOADERS



Models

1000 mm (39 in)
1100 mm (43 in)
1200 mm (47 in)

1500 mm (59 in)
1520 mm (60 in)
1600 mm (63 in)

Machine Compatibility

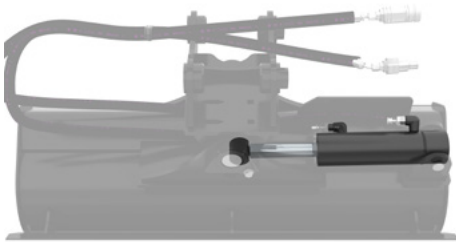
301.5, 301.6, 301.7 CR, 301.8, 302 CR
302.7 CR
303 CR, 303.5 CR, 304 CR, 305 CR, 306 CR, 307.5, 308 CR, 309 CR, 310,
416, 420, 426, 428, 430, 432, 434, 440, 444, 450
305 CR, 306 CR, 416, 420, 426, 428, 430, 432, 434, 440, 444
307.5, 308 CR, 309 CR, 310, 450
305 CR, 306 CR

Current machines listed. Machine model availability and attachment vary by region. Contact your local Cat® dealer for exact compatibility and availability.



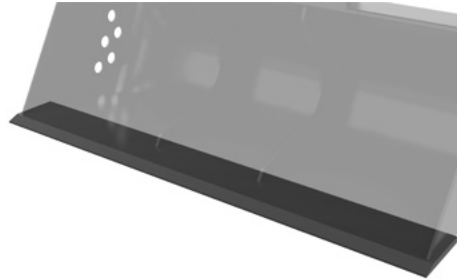
Tilting Ditch Cleaning Buckets for Cat® Mini Excavators provide a tilting angle flexibility needed when digging trenches, slopes and other digging applications where digging angles up to 45 degrees is needed. Tilting ditch cleaning buckets are also very useful when the machine position is not horizontal to the required digging angle, the tilting bucket allows for adjustment to match the required angle.

FEATURES - 1-6 TON MINI EXCAVATORS



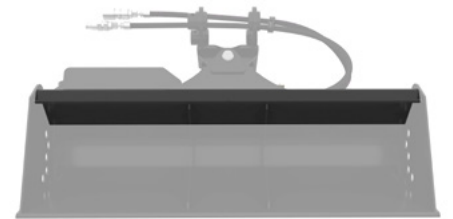
SINGLE CYLINDER DESIGN

Single horizontally positioned hydraulic cylinder provides stable, 45 degrees tilt left and right of center.



BASE EDGE

Hardened base edge delivers long life and high performance.



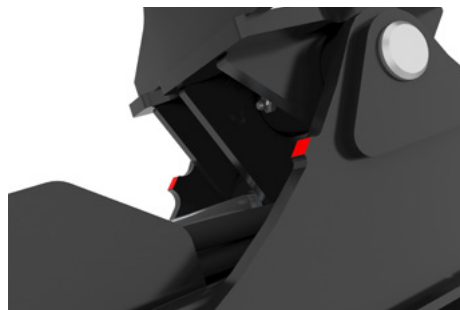
TORQUE TUBE

Top torque tube provides for extra rigid and stable bucket design.



DRAIN HOLES

Standard drain holes allow water drainage from the bucket when working in cohesive, wet conditions.



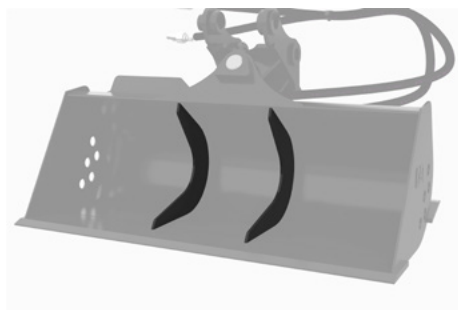
BUILT-IN TILT STOPS

Integrated tilting head stops protect cylinders against hydraulic overload.



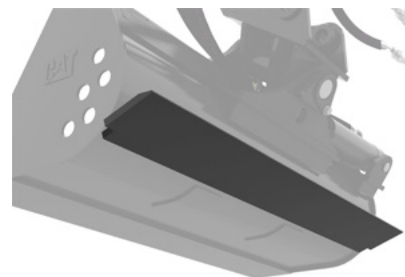
SPILL GUARD

Spill guard helps to prevent material from flowing over bucket into cylinder and causing damage.



BUCKET SUPPORT RIBS

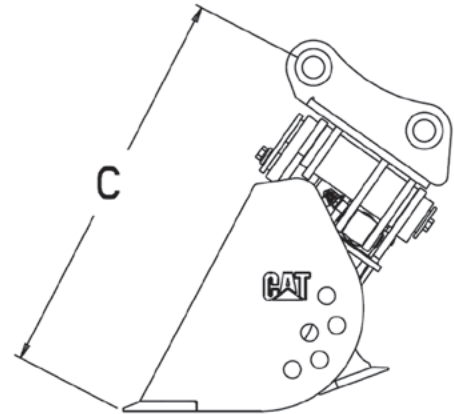
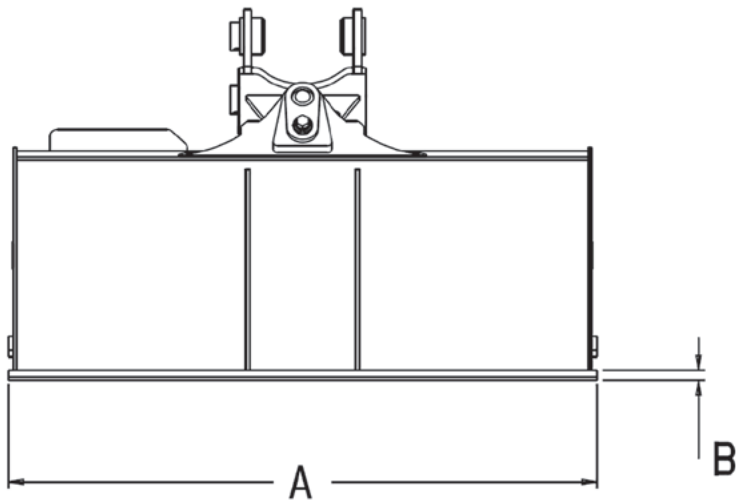
Two bucket stiffeners from top torque tube to base edge provide additional support during backwards grading, as well as overall bucket longevity.



INTEGRATED REAR CUTTING EDGE

Rear torque tube doubles as a rear cutting edge, allowing for back dragging applications.

SPECIFICATIONS - 1-6 TON MINI EXCAVATORS

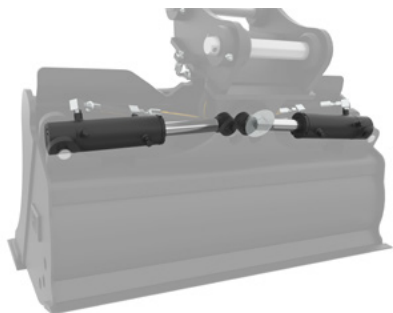


TILTING DITCH CLEANING BUCKETS

Machine Class	1 Ton	2 Ton	3-4 Ton	5-6 Ton	5-6 Ton
A Width – mm (in)	1000 (39)	1100 (43)	1200 (47)	1200 (47)	1600 (63)
B Base Edge Thickness – mm (in)	10 (0.4)	16 (0.6)	16 (0.6)	20 (0.8)	20 (0.8)
C Tip Radius – mm (in)	496 (19.5)	654 (25.7)	728 (28.7)	801 (31.5)	801 (31.5)
Rated Capacity – L (ft3)	56 (2)	110 (3.9)	159 (5.6)	204 (7.2)	280 (9.9)
Weight – kg (lb)	52 (115)	133 (294)	162 (357)	228 (503)	251 (553)
Required Hydraulics	1st Auxiliary	1st Auxiliary	1st Auxiliary	1st Auxiliary	1st Auxiliary
Interface	Pin On (Pin Grabber)	Pin On (Pin Grabber)	Pin On (Pin Grabber)	Pin On (Pin Grabber)	Pin On (Pin Grabber)

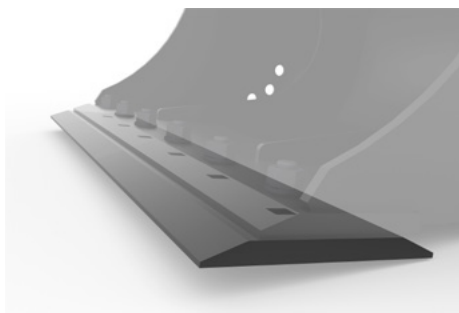
Machine Class	1 Ton	2 Ton	3-4 Ton	5-6 Ton	5-6 Ton
A Width – mm (in)	1000 (39)	1100 (43)	1200 (47)	1200 (47)	1500 (59)
B Base Edge Thickness – mm (in)	10 (0.4)	16 (0.6)	16 (0.6)	16 (0.6)	16 (0.6)
C Tip Radius – mm (in)	458 (18)	602 (23.7)	668 (26.3)	728 (28.7)	733 (28.9)
Rated Capacity – L (ft3)	56 (2)	125 (4.4)	133 (4.7)	133 (4.7)	177 (6.3)
Weight – kg (lb)	84 (185)	140 (309)	194 (428)	194 (428)	260 (573)
Required Hydraulics	1st Auxiliary	1st Auxiliary	1st Auxiliary	1st Auxiliary	1st Auxiliary
Interface	CW-05	CW-05	CW-05	CW-10	CW-10

FEATURES - 7-10 TON MINI EXCAVATORS AND BACKHOE LOADERS



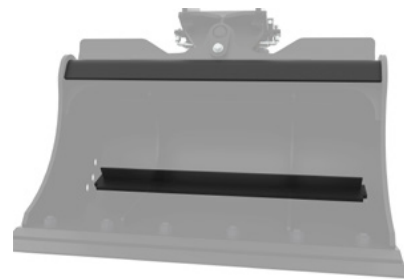
DUAL CYLINDER DESIGN

Dual horizontally positioned hydraulic cylinders provide short, smooth cycle times in both ways and maximize tilt momentum. The bucket can tilt 45 degrees left or right of center.



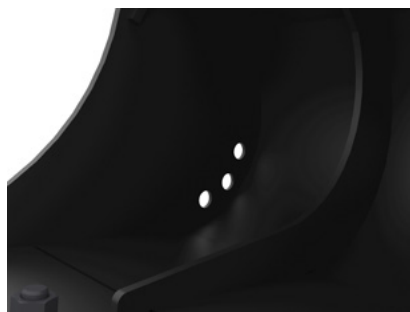
STANDARD BOLT-ON CUTTING EDGE

One piece, replaceable and reversible, bolt-on, hardened cutting edge delivers long life and high performance.



TWO TORQUE TUBES

Two torque tubes provide for extra rigid design and stable bucket.



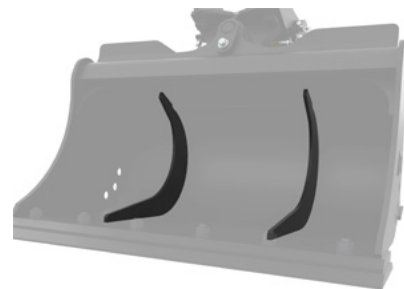
DRAIN HOLES

Standard drain holes allow water drainage from the bucket when working in cohesive, wet conditions.



VISUAL TILT INDICATOR

Visual indicator allows the operator to easily see from the cab of the machine if the bucket is horizontal.



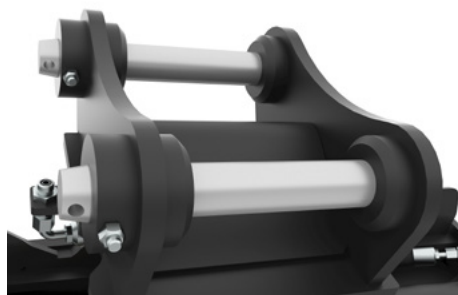
BUCKET SUPPORT RIBS

Two bucket stiffeners from top torque tube to base edge provides additional support during backwards grading, as well as overall bucket longevity.



INTEGRATED REAR CUTTING EDGE

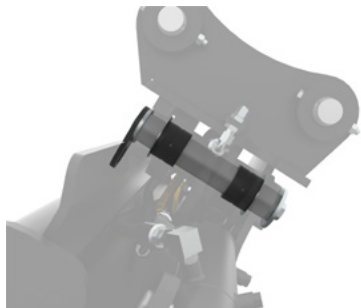
Rear torque tube doubles as a rear cutting edge, allowing for back dragging applications.



INCLUDED MOUNTING PINS

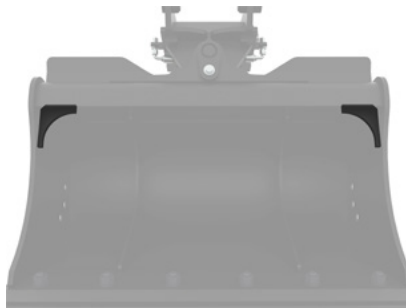
Includes standard machine mounting pins.

FEATURES - 7-10 TON MINI EXCAVATORS AND BACKHOE LOADERS



SINGLE PIN SWING

Robust hardened tilting head center bolt design with hardened bushings.



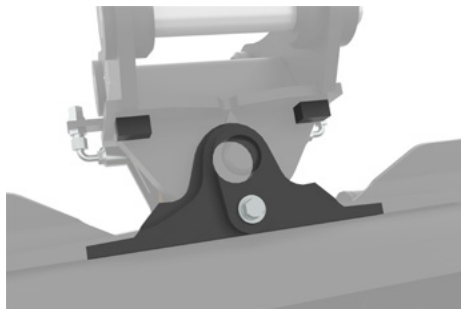
CORNER GUSSETS

Two corner stiffeners below torque tube to support side cutting edges and resist lateral forces.



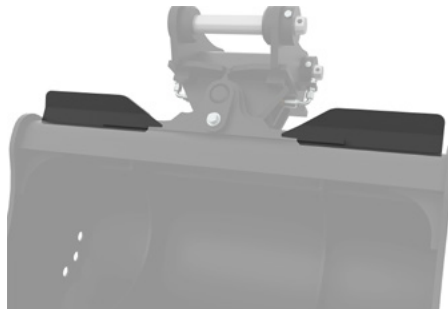
INCLUDED MOUNTING PINS

Bracket connection is a modular design with low offset for maximum digging efficiency.



BUILT-IN TILT STOPS

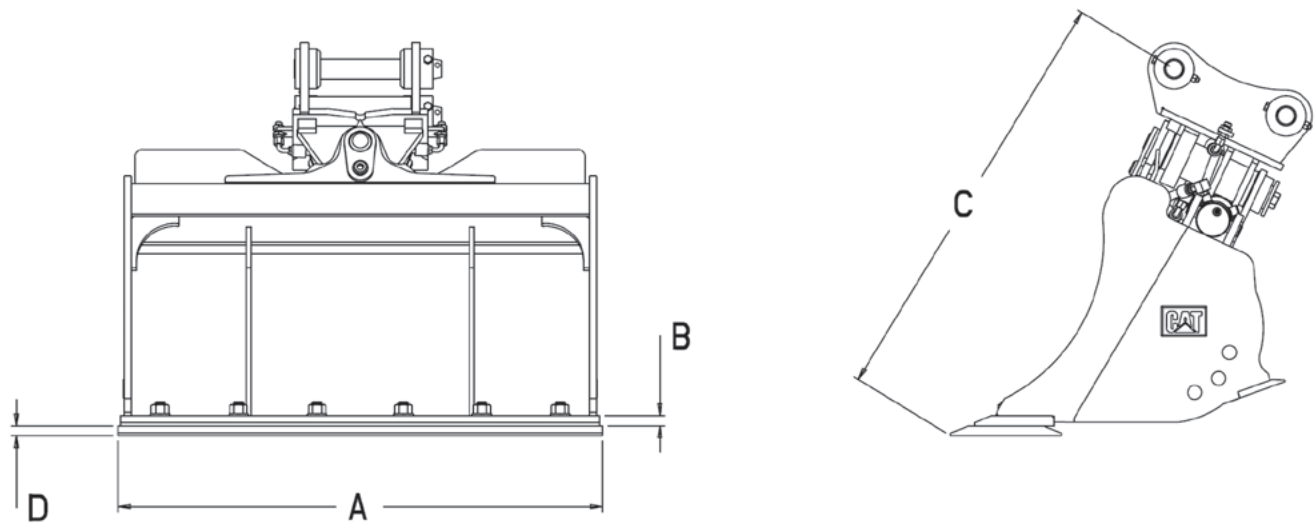
Integrated tilting head stops protect cylinders against hydraulic overload.



SPILL GUARDS

Two spill guards help to prevent material from flowing over bucket into cylinders and causing damage.

SPECIFICATIONS - 7-10 TON MINI EXCAVATORS AND BACKHOE LOADERS



TILTING DITCH CLEANING BUCKETS						
Machine Class	7-9 Ton	7-9 Ton	10 Ton / BHL	10 Ton / BHL	415-444 BHL	415-444 BHL
A Width – mm (in)	1200 (47)	1520 (60)	1200 (47)	1500 (59)	1200 (47)	1500 (59)
B Base Edge Thickness – mm (in)	25 (1)	25 (1)	25 (1)	25 (1)	25 (1)	25 (1)
C Tip Radius – mm (in)	1081 (42.6)	1081 (42.6)	1112 (43.8)	1112 (43.8)	1099 (43.3)	1099 (43.3)
D Cutting Edge Thickness – mm (in)	25 (1)	25 (1)	25 (1)	25 (1)	25 (1)	25 (1)
Rated Capacity – L (ft3)	360 (12.7)	460 (16.2)	360 (12.7)	460 (16.2)	360 (12.7)	460 (16.2)
Weight – kg (lb)	474 (1045)	545 (1202)	493 (1087)	562 (1239)	470 (1036)	540 (1191)
Required Hydraulics	1st Auxiliary	1st Auxiliary	1st Auxiliary	1st Auxiliary	1st Auxiliary	1st Auxiliary
Interface	Pin On (Pin Grabber)	Pin On (Pin Grabber)	Pin On (Pin Grabber)	Pin On (Pin Grabber)	Pin On (Pin Grabber)	Pin On (Pin Grabber)

For more complete information on Cat products, dealer services and industry solutions, visit us on the web at www.cat.com

© 2026 Caterpillar. All Rights Reserved.

Materials and specifications are subject to change without notice. Featured machines in photos may include additional equipment. See your Cat dealer for available options.

CAT, CATERPILLAR, LET'S DO THE WORK, their respective logos, "Caterpillar Corporate Yellow," the "Power Edge" and Cat "Modern Hex" trade dress as well as corporate and product identity used herein, are trademarks of Caterpillar and may not be used without permission.
www.cat.com www.caterpillar.com

AEHQ8645-00
(02-2026)
(Global)

