

DOZER BLADES

6-WAY DOZER BLADES
SMART DOZER BLADES

SKID STEER LOADERS
COMPACT TRACK LOADERS

Models

DB120

DB123

DBS123

DBS126

Machine Compatibility

216B3, 226B3, 226D3, 232D3, 236D3, 239D3, 249D3, 250, 255, 260, 265

216B3, 226B3, 226D3, 232D3, 236D3, 239D3, 249D3, 250, 255, 260, 265, 270, 270 XE, 275, 275 XE

255, 265, 275, 275 XE

255, 265, 275, 275 XE, 285, 285 XE

Current machines listed. Machine model availability and attachment vary by region. Contact your local Cat® dealer for exact compatibility and availability.



Cat® 6-Way Dozer Blades are engineered for both rough and finish grading in dirt and gravel, as well as light dozing tasks. Featuring advanced 6-way capabilities, these blades deliver superior control and accuracy which makes them ideal for finish grade work in construction and landscaping applications.

FEATURES - 6-WAY DOZER BLADES



FULL MODULATED JOYSTICK CONTROL

Full modulated joystick control operates the attachment with right joystick. Main functions are incorporated into the joystick for an intuitive operator experience.



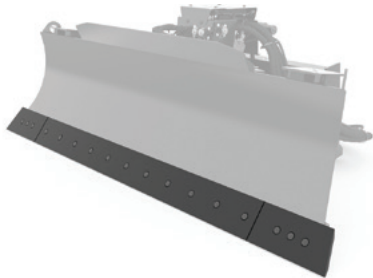
VARIABLE POWER ANGLE TILT

Variable Power Angle Tilt (VPAT) design with simultaneous tilt and angling capability delivers superior control and maneuverability.



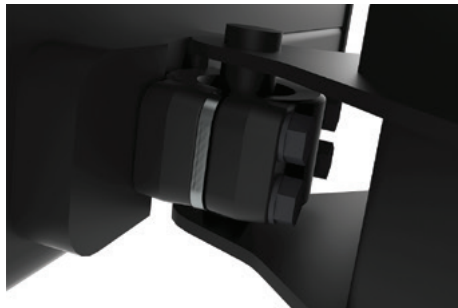
TRAPEZOIDAL BLADES

Trapezoidal blades are modeled after track-type tractor blades and allow flush cutting against a vertical surface when blade is fully tilted.



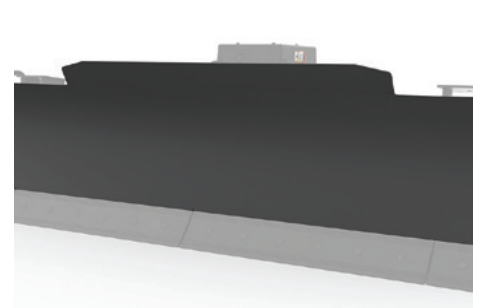
THREE-PIECE, REPLACEABLE, BOLT-ON CUTTING EDGE

Removable shims allow adjustment. Three replaceable, bolt-on, cutting edges ensure a long service life of the blade. Wear indicator bars on cutting edges provide a visual indication of remaining cutting-edge life. Center cutting edge section can be flipped for double life.



REMOVABLE SHIMS

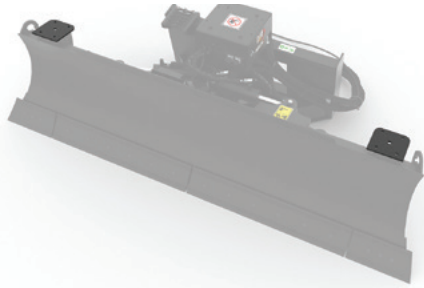
Removable shims allow adjustment for trunnion interface wear.



SPILL GUARD

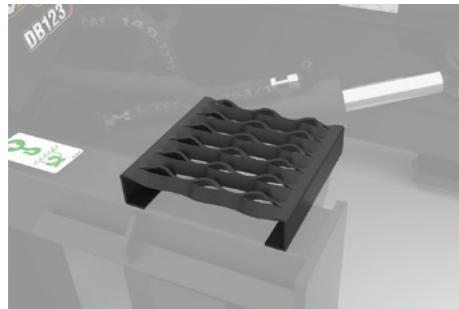
Spill guard prevents material from spilling over the top of the blade in full blade scenarios.

FEATURES - 6-WAY DOZER BLADES



MAST MOUNTING POINTS

Mast mounting points accept external reference masts.



SERRATED STEP

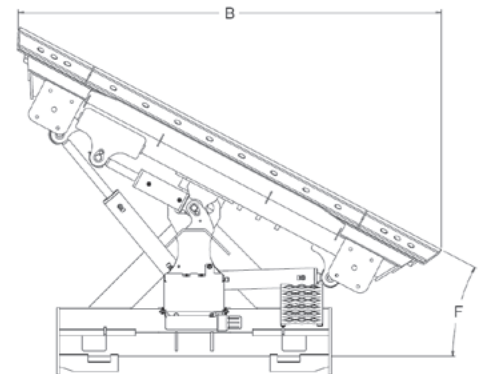
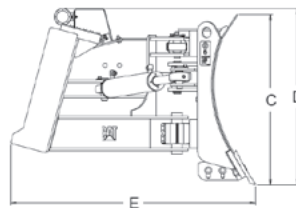
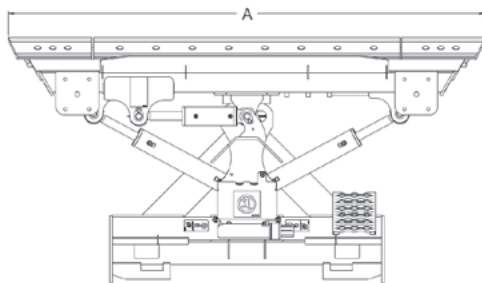
Serrated step provides safe entry and exit of machine cab.



OMM CONTAINER

Container stores the Operation Maintenance Manual (OMM) in a protective case on the attachment.

SPECIFICATIONS - 6-WAY DOZER BLADES



6-WAY DOZER BLADES

Model	DB120	DB123
A Overall Width – mm (in)	2002 (79)	2342 (92)
B Width (fully angled) – mm (in)	1750 (69)	2049 (81)
C Blade Height – mm (in)	714 (28)	716 (28)
D Overall Height – mm (in)	777 (30.5)	779 (31)
E Overall Length – mm (in)	1028 (41)	1028 (41)
F Maximum Blade Angle - Right/Left of Center – degrees	30	30
Tilt Angle Range – degrees	± 10	± 10
Weight – kg (lb)	501 (1104)	510 (1124)
Optimal Hydraulic Flow – L/min (gpm)	42-86 (11-23)	42-86 (11-23)
Optimal Hydraulic Pressure – bar (psi)	145-235 (2100-3400)	145-235 (2100-3400)
Cutting Edge Thickness – mm (in)	16 (0.6)	16 (0.6)
Required Hydraulics	Standard Flow	Standard Flow
Interface	Skid Steer Loader	Skid Steer Loader

Cat Smart Dozer Blades deliver superior performance for cutting, moving and grading dirt, gravel, sand and more. Featuring integrated joystick controls for intuitive operation, advanced machine displays with real-time grade indications and operator-assist technology to achieve smooth grades faster and with less effort, these blades set a new standard in efficiency and precision.

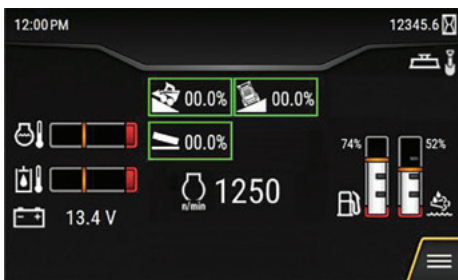
SMART ATTACHMENT

What makes the Cat Smart Dozer Smart? The first step is attachment recognition. D3 and Next Generation compact track loaders recognize there is a smart dozer blade attached to the machine. This unlocks additional dedicated machine displays which allow the operator to interface with the machine and access attachment control options.

The Cat Smart Dozer Blade also allows mode select and pattern change. That is, the existing machine joysticks are repurposed to perform functions on the attachment.



FEATURES - SMART DOZER BLADES



GRADE INDICATION DISPLAY

Highlighted in green:

Top left indicator: machine mainfall

Top right indicator: machine slope

Bottom left indicator: blade slope

When the assist indicators are highlighted in green, those assist features are turned on. If the indicators are grey or not selected, the assist features are off.



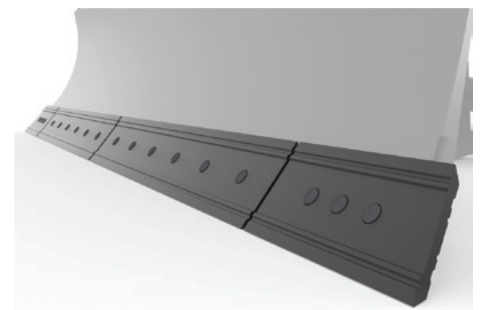
LED INDICATORS

Two lights on the attachment are visible to the operator and indicate the mode of the machine/attachment combination.

Both lights on: Indicates unit is in machine control mode.

Blue (left) light only: Indicates the unit is in attachment control mode.

Green (right) light only: Indicates the unit is in attachment control mode and assist is active.

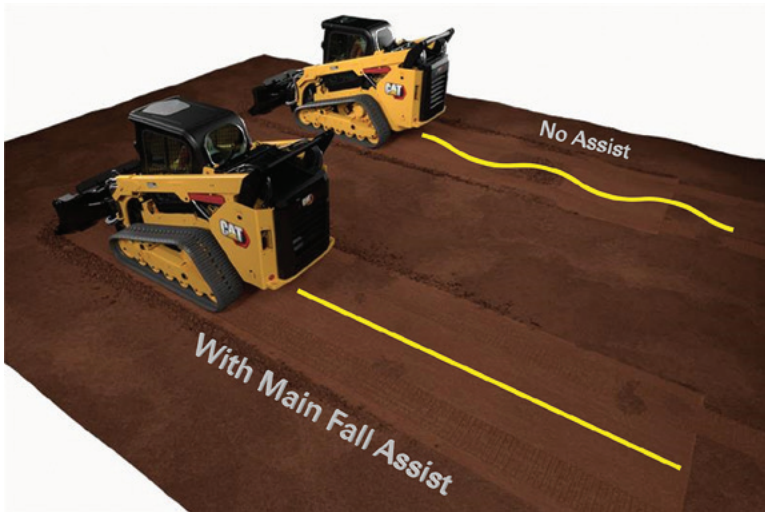


FOUR-PIECE, REPLACEABLE BOLT-ON CUTTING EDGE

Features replaceable, bolt-on cutting edges to ensure a long service life.

DBS126 only.

ADDITIONAL FEATURES - SMART DOZER BLADES



OPERATOR ASSIST

The Assist feature on smart dozer blades make achieving a smooth grade easier with fewer passes, reducing the washboard effect common in skid steer loader (SSL) and compact track loader (CTL) dozer attachments. While the operator stays in control, the blade and machine work together to maintain flatness by using on-screen feedback to build or cut material to the desired mainfall.

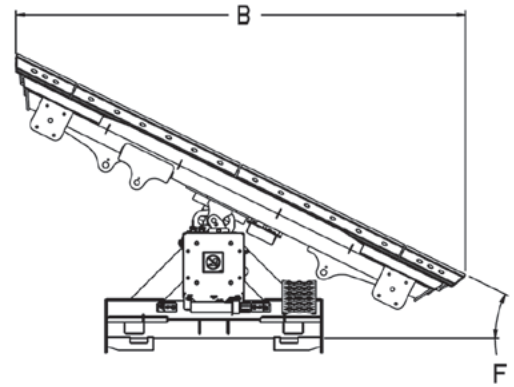
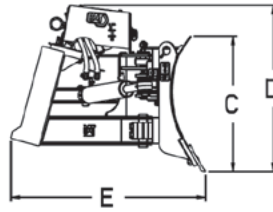
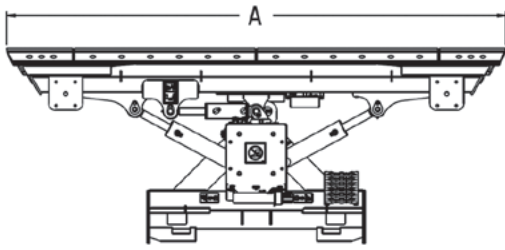
Assist also adds blade slope memory functions:

- MEMORIZE SLOPE
- RETURN TO SAVED SLOPE
- MIRROR
- RESET TO ZERO

MODES/PATTERNS

Once the host machine recognizes the smart dozer blade is attached, Attachment Control Mode is unlocked (seen in the display). This feature transforms the CTL and smart dozer blade into a machine that operates like a full-sized dozer. Additionally, there are two different patterns the operator can choose within the display. Tilt pattern uses the right joystick for bucket controls and buttons 3 and 4 to manage lift arms. Lift pattern uses the right joystick to control blade height and buttons 3 and 4 to adjust bucket curl/dump—ideal for rough grade.

SPECIFICATIONS - SMART DOZER BLADES



SMART DOZER BLADES

Model	DBS123	DBS126
A Overall Width – mm (in)	2342 (92)	2646 (104)
B Width (fully angled) – mm (in)	2049 (81)	2304 (91)
C Blade Height – mm (in)	716 (28)	716 (28)
D Overall Height – mm (in)	878 (34)	878 (34)
E Overall Length – mm (in)	1026 (40)	1030 (41)
F Maximum Blade Angle - Right/Left of Center – degrees	30	30
Tilt Angle Range – degrees	± 10	± 10
Weight – kg (lb)	528 (1164)	547 (1206)
Optimal Hydraulic Flow – L/min (gpm)	42-86 (11-23)	42-86 (11-23)
Optimal Hydraulic Pressure – bar (psi)	145-235 (2100-3400)	145-235 (2100-3400)
Cutting Edge Thickness – mm (in)	16 (0.6)	16 (0.6)
Required Hydraulics	Standard Flow	Standard Flow
Interface	Skid Steer Loader	Skid Steer Loader

For more complete information on Cat products, dealer services and industry solutions, visit us on the web at www.cat.com

© 2026 Caterpillar. All Rights Reserved.

Materials and specifications are subject to change without notice. Featured machines in photos may include additional equipment. See your Cat dealer for available options.

CAT, CATERPILLAR, LET'S DO THE WORK, their respective logos, "Caterpillar Corporate Yellow," the "Power Edge" and Cat "Modern Hex" trade dress as well as corporate and product identity used herein, are trademarks of Caterpillar and may not be used without permission.
www.cat.com www.caterpillar.com

AEHQ8644-01
(06-2026)
(Global)

