

D11

DOZER

BUILD 07B



Engine Power Net SAE J1349/ISO9249

Operating Weight

Forward
Reverse
Standard
Carrydozer

634 kW / 850 hp
714 kW / 957 hp
106 614 kg / 235,044 lb
115 307 kg / 254,208 lb



GO THE DISTANCE WITH CAT® DOZERS

Caterpillar has the industry's broadest lineup of dozers working in dozens of applications, climates and environments. They're made to go the distance, with a proven design and durable construction that deliver multiple lives. And when it comes to productivity, they'll help your operation move more material. They're infused with performance-enhancing technologies, easy to operate and service, and supported by the world-class Cat® dealer network. The result? High reliability, maximum productivity and long life through multiple rebuilds to drive the lowest total cost of ownership.

These benefits, and many more, make Cat dozers the ideal choice for every site or application. And they deliver a better bottom line to the most important mine in the world: yours.

BUILD 07B

CAT® D11

MAKING THE BEST BETTER

How do you make the industry's best large dozer even better? By listening to your customers. You asked us to keep everything you love about the next generation D11, but to continue making improvements that help lower your overall costs. So we've made key changes that improve serviceability, durability, reliability and safety—helping the new D11 (07B) deliver a more positive impact to your bottom line.





When we brought the next generation D11 to market, it delivered significant improvements over previous models. Those same benefits are delivered by the D11 (07B).

BOOST FUEL EFFICIENCY BY 3-8%*

Load-sensing hydraulics and a new torque divider boost performance while lowering fuel costs.

INCREASE PRODUCTIVITY & EFFICIENCY BY 4-8%*

- + High Power in Reverse
- + Stator Clutch Torque Divider
- + Extended Tilt Cylinders

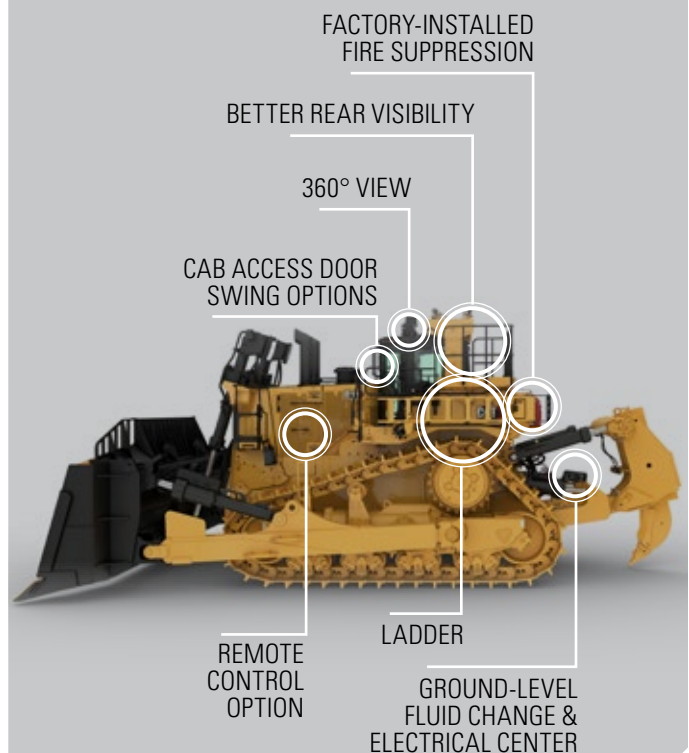
LOWER MAINTENANCE & REPAIR COSTS BY 3-5%*

Spend less time on maintenance thanks to a robust equalizer bar, a new case and frame design, a 30% larger oil pan, redesigned pin joints, and a downtime-reducing DOC aftertreatment system.

LOWER OVERALL COST/BANK CUBIC METER BY 4-6%*

*compared to D11T

ENHANCE OPERATOR SAFETY





DELIVERING THE **LOWEST COST** OF OWNERSHIP

No other manufacturer has more experience moving material than Caterpillar. There are more Cat large dozers working around the world than any other brand. Our long history of evolution and innovation has helped us remain the leader for over a century.



A PROVEN DESIGN PHILOSOPHY

When it comes to making Cat large dozers, we follow a proven design philosophy that focuses around six main areas:

- 1 Help to ensure operator safety, comfort and ease of operation
- 2 Maximize productivity in all applications
- 3 Drive innovation with the latest technologies
- 4 Build dozers that are easy to maintain and service
- 5 Deliver high reliability and multiple lives through machine rebuilds
- 6 Minimize environmental impact



OPTIMIZE YOUR DOZING OPERATION

When it comes to productivity, the D11 will help your operation go the distance. Infused with performance-enhancing features, the D11 helps you improve the efficiency of your dozing operation.

UP TO 6% LOWER COST PER TON



thanks to improved productivity and fuel efficiency, and reduced maintenance and repair costs

UP TO 8% HIGHER PRODUCTIVITY



thanks to features like high-horsepower reverse, load-sensing hydraulics, stator clutch torque divider and extended pitch

UP TO 5% BETTER FUEL EFFICIENCY

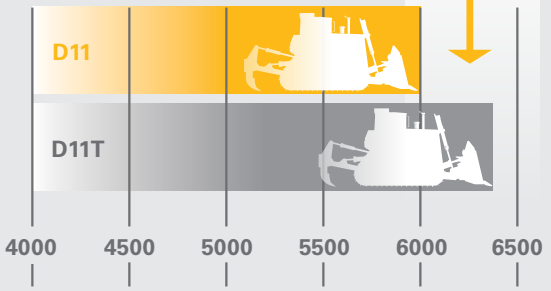


with combined load-sensing hydraulics and stator clutch torque divider

WHAT WOULD YOU DO WITH AN EXTRA MONTH OF PRODUCTIVITY A YEAR?



310 HOURS SAVED



HOURS / YEAR
BASED ON MOVING 5.65M BANK CUBIC YARDS OF MATERIAL

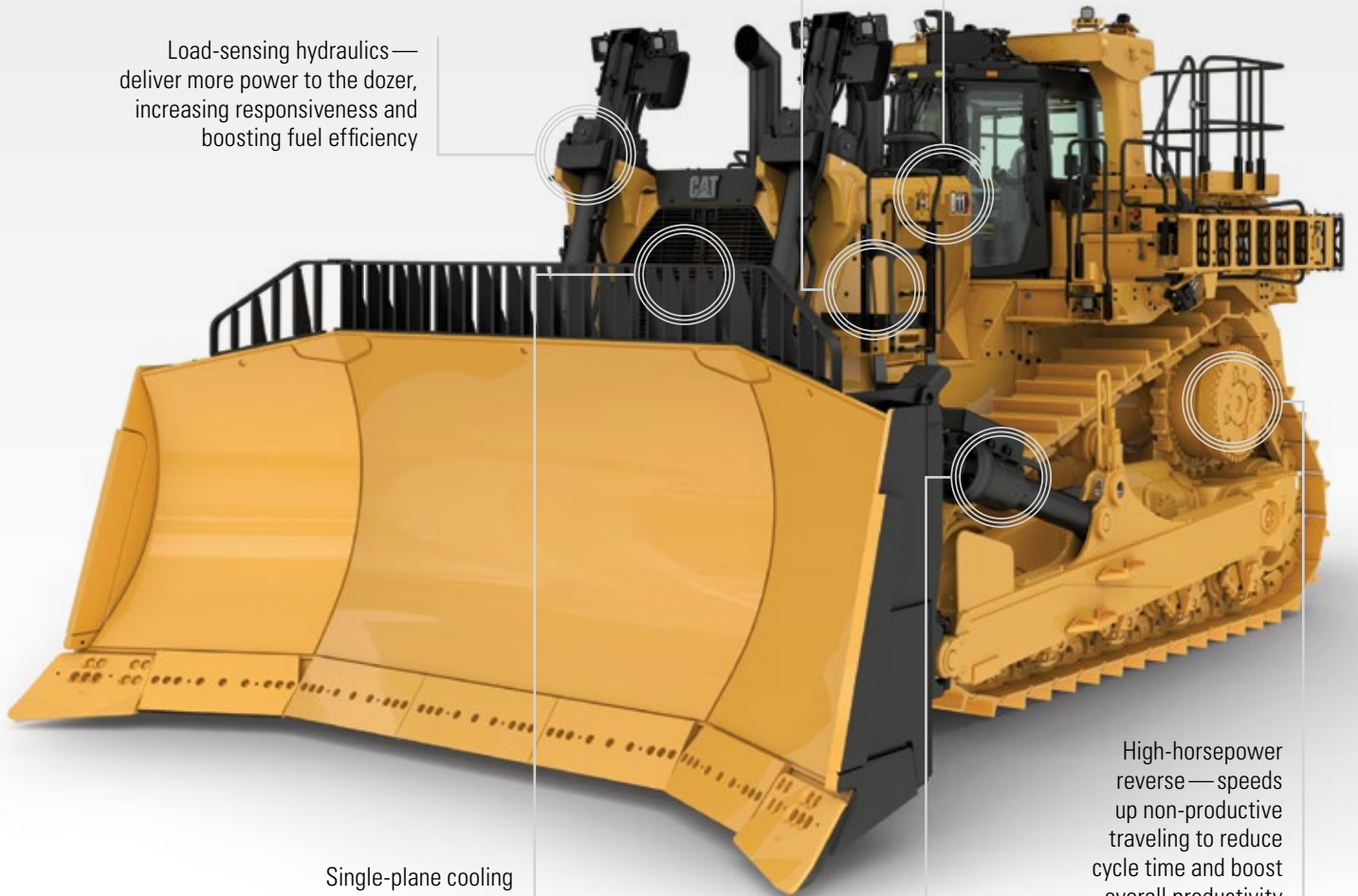
That's equal to 30 10-hour shifts.

PERFORMANCE AND EFFICIENCY ENHANCEMENTS TO BOOST YOUR PRODUCTIVITY

New with the D11 (07B), the C32B engine delivers the same power and performance as the C32 but features heavier duty internals for improved durability

Torque divider with stator clutch — automatically frees up the stator when torque is not required, delivering higher drivetrain efficiency for reduced fuel consumption

Load-sensing hydraulics — deliver more power to the dozer, increasing responsiveness and boosting fuel efficiency



Single-plane cooling system — enables better heat rejection and easier cooling core cleanout

High-horsepower reverse — speeds up non-productive traveling to reduce cycle time and boost overall productivity

Three cylinder options increase productivity:

- » Standard dual tilt
- » Extended pitch dual tilt
- » Carrydozer



PRODUCTIVE DOZING BEGINS WITH A PRODUCTIVE OPERATOR

SAFETY-INFUSED

A confident operator is a productive operator. So we've infused the D11 with safety features to help operators feel safe and confident on the job.

DESIGNED FOR COMFORT

Noise, vibration, stress and fatigue all have an effect on operator performance — so we've designed an environment that helps minimize them.

PRODUCTIVITY-ENHANCED

The operator environment in the D11 is more than a cab; it's an integrated electronic platform designed to maximize productivity.



UNPARALLELED OPERATOR ENVIRONMENT

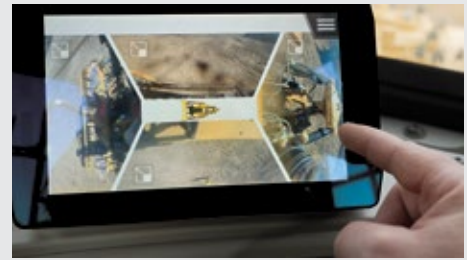
The operator station in the D11 is designed to reduce effort and exposure. The suspended undercarriage absorbs impact and reduces the shock loads transferred to the undercarriage by up to 50 percent — resulting in a smoother, more comfortable ride.

The cab is unparalleled, with enhanced ergonomics, a fully adjustable air suspension seat, and controls that are easy to access and operate. Low-effort electronic steering, ripper and dozer controls are easily accessible and provide sure, precise maneuvering. The standard isolation-mounted cab reduces noise and vibration, and conveniently located air circulation vents evenly distribute airflow for maximum comfort.

INTUITIVE TOUCHSCREEN DISPLAY

The operator's primary display screen is large, fast and powerful, with plenty of memory and an intuitive menu structure. The multifunction touchscreen display is the operator's gateway to monitoring machine performance and a convenient way to modify machine parameters to tailor performance to the current task. The Work Monitor menu screen collects machine data and provides real-time feedback on machine performance to optimize productivity.

KEEP OPERATORS SAFE, COMFORTABLE AND IN CONTROL



SAFETY ENHANCEMENTS

- + Additional platforms, rails and handles
- + Clean line of sight to front and rear work areas
- + Optional quad-camera, distortion-free, 360-degree vision system
- + Factory-installed fire suppression system
- + Third-generation powered ladder, which deploys and stores in seconds
- + Cab door swing option for easy ladder access
- + Various safety glass options
- + Automatic engine shutoff if dozer is tipped or rolls over
- + Seat belt warning system
- + Operator Not Present monitoring system
- + Cat MineStar™ Detect and Command capabilities



TAKE ADVANTAGE OF INTEGRATED TECHNOLOGIES

Cat large dozers became the industry leader by being innovative — and the D11 is no exception. The D11 (07B) delivers the same benefits that were introduced with the next generation D11. Advanced technologies are completely integrated into the dozer, creating smart machines and more informed operators to maximize the productivity of your operation.

Products like Automated Blade Assist, Enhanced Auto Shift, Autocarry™, Cat Grade Control 3D, Automatic Ripper Control and Terrain with Automatic Blade Control are seamlessly integrated into the D11. In addition, the D11 comes out of the factory ready to integrate Cat MineStar™ technology, which takes accuracy, efficiency and safety even further.

AUTOCARRY™

The Autocarry feature provides automatic blade control during the carry segment, reducing operator fatigue and helping to keep slip at the optimum level for best performance.

- + Increases productivity up to 15%
- + Lowers cost per unit of material moved
- + Delivers better performance in limited visibility

GRADE CONTROL 3D

Using dual ROPS-mounted GNSS antennas and blade-mounted Inertial Measurement Unit (IMU) sensors, this feature provides precise positioning of the cutting edge, eliminating the need for masts and cables on the blade. The system also reduces the need for grade staking and grade checking. New D11 (07B) dozers feature improved guarding and lines routing for the IMU sensors.

- + Reduces number of people required on site
- + Lowers personnel costs
- + Enhances safety

GET THE BENEFITS OF SEAMLESS INTEGRATION ONBOARD SOLUTIONS

DUAL-TILT AUTOMATED BLADE ASSIST

Automated Blade Assist (ABA) comes standard with the dual-tilt feature. This feature automates the movement of the blade to several key preset pitch positions. The positions of each segment — load, carry and spread — can be set through the Information Display or the push-button keypad.

- + Increases efficiency
- + Reduces operator workload

AUTOMATIC RIPPER CONTROL

This optional feature monitors the dozer speed with the ROPS-mounted GNSS to automatically adjust engine speed and ripper depth to minimize track slip.

- + Decreases wear and tear on the machine
- + Reduces operator fatigue





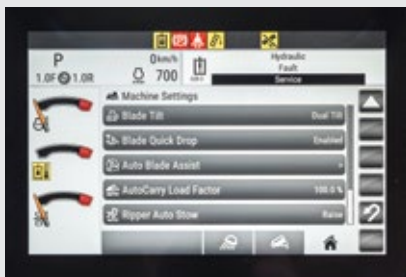
RUN YOUR DOZERS REMOTELY COMMAND FOR DOZING

MineStar Command for dozing offers multiple levels of remote control and even semi-autonomous operation, helping increase operator safety and comfort — as well as the productivity of your dozer fleet. Whether you choose the over-the-shoulder remote control console or the remote operator station, your operators can have full control of the dozer without being exposed to dust, noise, vibration or other hazards. With semi-autonomous dozing, a single operator can manage multiple machines from a remote location — boosting productivity and safety.

WORK MORE ACCURATELY, SAFELY AND EFFICIENTLY

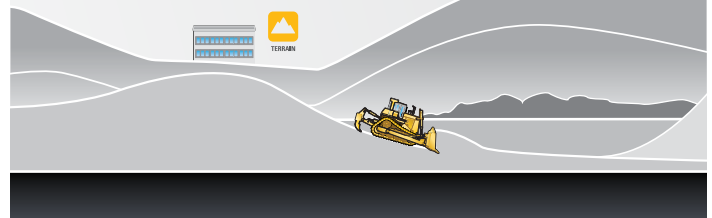
CAT MINESTAR™ SOLUTIONS FOR DOZING

SPEED THE WORK TERRAIN WITH AUTOMATIC BLADE CONTROL



Terrain's Automatic Blade Control feature provides full automatics, full blade load and overcut protection integrated into the machine control system on D11 dozers. These tools speed the work, decrease fuel burn and minimize overcut, overfill and rehandling.

INFORM YOUR OPERATORS TERRAIN FOR GRADING



With onboard guidance tools and real-time feedback, MineStar Terrain for grading gives operators the information to maximize machine efficiency by monitoring ore bodies, bench heights, cycle times and volume of material cut and filled. Inputs from the office tell operators where to dig or cut, how much material to move, when they've moved enough and even if they've moved too much.



REDUCE YOUR
DOWNTIME.
**REDUCE
YOUR
COSTS.**

The Cat D11 is designed to be easy to service and maintain — so your machines spend less time in the maintenance shop and more time on the job. We've grouped maintenance points to minimize movement around the machine, and provided ground-level service access for all fluids and key electrical control.



CONTRIBUTORS TO EASIER MAINTENANCE

When the next generation D11 was introduced, it included a number of enhancements designed to streamline maintenance:

- + Large oil sump capacity, which extends 500-hour planned maintenance intervals.
- + Redesigned pin joints, which eliminate the need for line boring and simplify replacement of the bearing inserts on the blade ripper and push-arm trunnions.
- + AutoLube system, with ground-level fill and automatic shutoff capability.
- + Continuous fluid monitoring on all compartments, including direct fluid monitoring of the hydraulic tank and pivot shaft reservoir.
- + Ground-level service fluid change for coolant, hydraulic, engine and powertrain oil.
- + Single-plane cooling system for easy cleaning.



LESS MAINTENANCE = LESS COSTS

D11: 856 hours of M&R

D11T: 947 hours of M&R

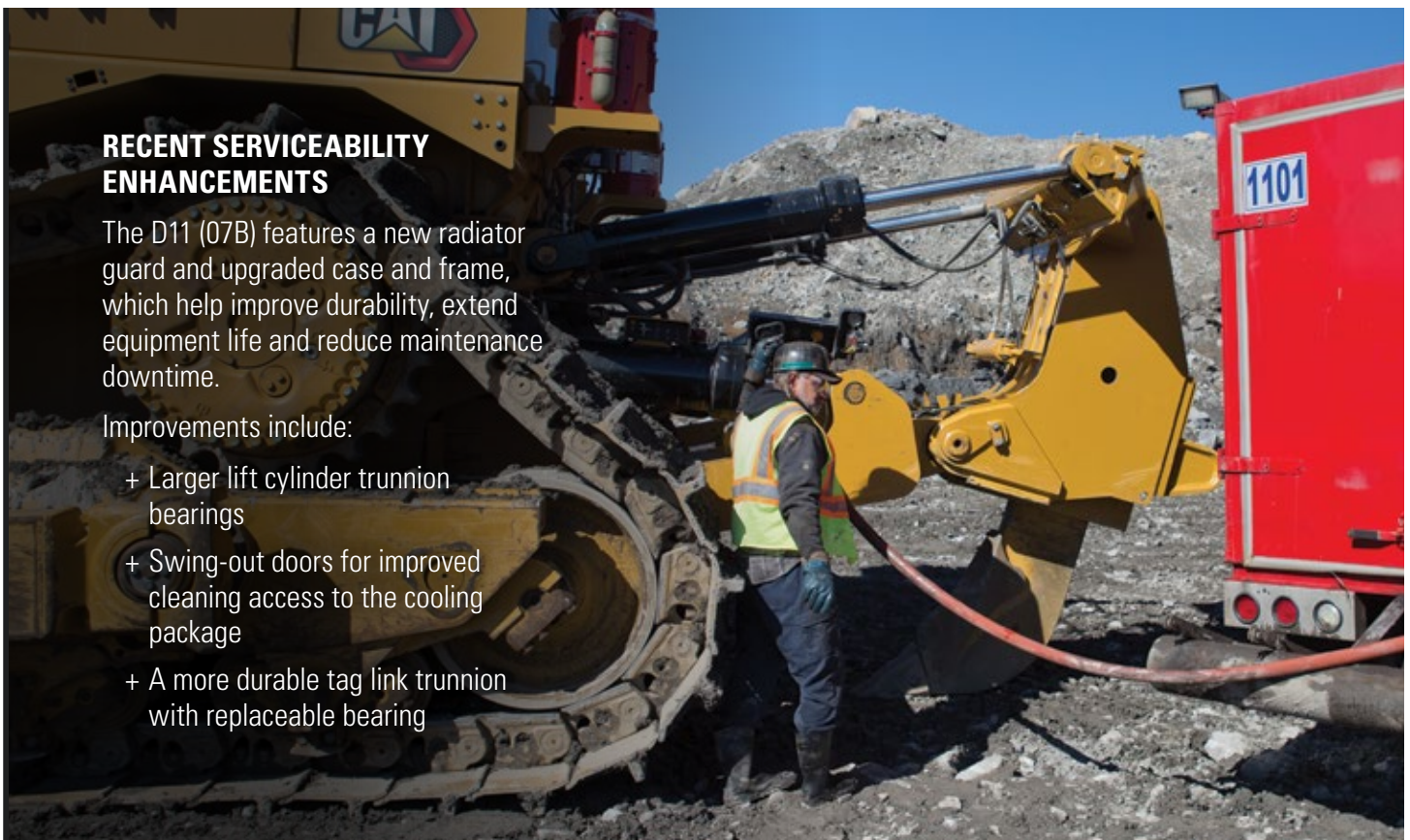
TO MOVE 5.65M BANK CUBIC
YARDS OF MATERIAL

RECENT SERVICEABILITY ENHANCEMENTS

The D11 (07B) features a new radiator guard and upgraded case and frame, which help improve durability, extend equipment life and reduce maintenance downtime.

Improvements include:

- + Larger lift cylinder trunnion bearings
- + Swing-out doors for improved cleaning access to the cooling package
- + A more durable tag link trunnion with replaceable bearing

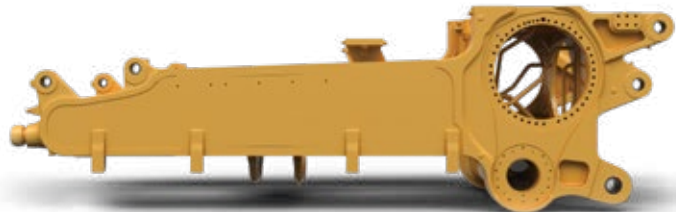




DOZERS THAT ARE MADE TO GO THE DISTANCE

The durability and reliability of Cat dozers are unmatched in the industry. It's not unusual for a Cat dozer to log more than 100,000 hours.

THE MORE DURABLE D11



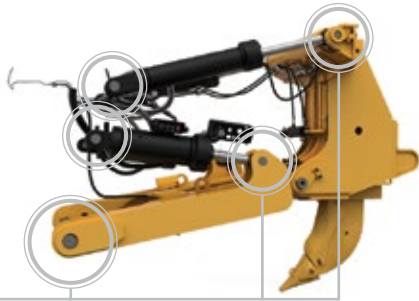
Redesigned case and frame to increase fatigue life



Larger equalizer bar with improved bearings



Replaceable push-arm trunnion bearing inserts



Ripper and blade pin bores with replaceable bearings



DOZE. REBUILD. REPEAT.

The D11 frame, powertrain and major components are built to be rebuilt—using new, remanufactured or rebuilt parts and components—so you can take advantage of a cost-effective second life of like-new performance at a fraction-of-new price.

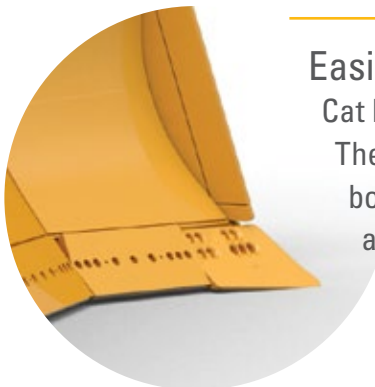
The backbone of the machine is a heavy, strong and durable frame with high-strength steel castings and continuously rolled top and bottom frame rails. Frames provide durable support to the undercarriage, elevated final drives and other components.



CAT BLADES: THE IDEAL MATCH FOR CAT DOZERS

Decades of dozer research and development have made Caterpillar the leader in blade technology. Cat blades are designed for loadability and constructed of high-tensile strength materials to produce big numbers over a long life.

- + Optimal heel clearance and sharp cutting edge angle, which make the blade more aggressive in tough material
- + Superior loadability due to heavy moldboard construction and bolt-on hardened cutting edges and end bits
- + Ability to resist torsional bending and distortion
- + Material thickness chosen specifically to increase wear resistance and dozing effectiveness — without sacrificing machine balance or performance

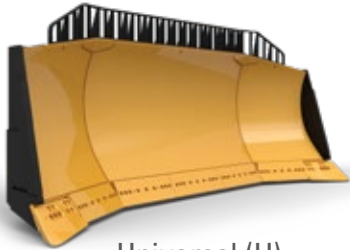


Easier blade loading in hard-to-penetrate materials

Cat blades are designed with the optimal heel clearance.

The D11 features a 29.3° interior angle between the back bottom of the blade and the ground. This clearance angle allows the blade to better penetrate and load.

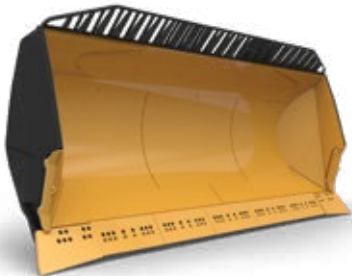
BLADE OPTIONS for the D11



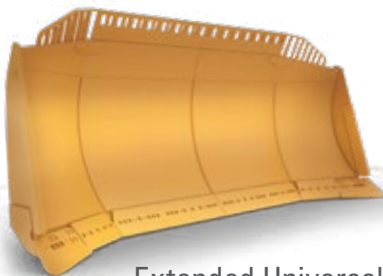
Universal (U)



Semi-Universal (SU)



Carrydozer (CD)



Extended Universal (XU)

SPECIALTY BLADES

Work-tool options are available for applications requiring high-capacity blades for light materials.

- + Coal Blades
- + Reclamation Blades

REAR ATTACHMENTS



Single-shank Ripper



Multi-shank Ripper

SPECIALTY ATTACHMENTS

- + Multi-shank Leach Pad Ripper
- + Multi-shank Coal Ripper (five shank)
- + Counterweight
- + Rear Drawbar with Counterweight



ENHANCEMENTS INTRODUCED WITH D11 BUILD 07B

The D11 (07B) features several updates that improve durability and performance, streamline maintenance and increase commonality with other Cat dozers.

NEW RADIATOR GUARD AND UPGRADED CASE AND FRAME

- + Larger lift cylinder trunnion bearings extend equipment life, reduce maintenance and increase machine durability.
- + Swing-out doors improve cooling package cleaning access.
- + More durable tag link trunnion with replaceable bearing minimizes maintenance and related downtime.
- + Simplified, single-piece mainframe side sheet reduces downtime.

IMPROVED FINAL DRIVES

Final drives have been redesigned to improve service life and increase durability. Planned component repair (PCR) time has been increased from 15,000 hours to 18,000 hours. The improved final drives are retrofittable to all former D11 models (new axle required).

SAFETY ENHANCEMENTS

- + Audible alarm to signal motion of the access ladder improves safety and awareness around the machine.
- + Circuit breaker protection for engine pre-lube system helps enhance machine reliability.
- + Enhanced guarding, which protects blade- and push-arm-mounted inclination sensors (used with Terrain with Blade Control configurations) from potential contact with rocks and heavy soil.
- + Improved support of blade tilt cylinder hoses enhances safety and increases reliability.
- + Bosses on Rollover Protective Structure (ROPS) canopy that simplify machine identification mounting.



C32B ENGINE

New with the D11 (07B), the C32B engine is more reliable and durable than its predecessor. Weighing approximately 50 kg (110 lb) more than the C32, the C32B's performance-critical components have been strengthened and upgraded to help extend time between rebuilds.

As always, the D11 offers a simple, maintenance-free diesel oxidation catalyst (DOC) aftertreatment solution that meets U.S. EPA Tier 4 Final, EU Stage V, and other equivalent emissions standards. This downtime-reducing system delivers measurable benefits compared to diesel particulate filters (DPF).

- + Passive aftertreatment solution eliminates the need for thermal management or regeneration, reducing downtime.



- + Does not require diesel exhaust fluid (DEF).
 - Eliminates DEF-related maintenance.
 - Minimizes total fluid consumption.
 - Eliminates the need for any DEF infrastructure on the dozer or storage on the jobsite — minimizing overall package size and reducing costs.
- + Requires no selective catalytic reduction (SCR), which increases complexity and cost. SCR systems can become blocked and inefficient and require occasional replacement of the SCR catalyst.

TECHNICAL SPECIFICATIONS

See cat.com for complete specifications.

| ENGINE | | | |
|--|--|-----------------------|--|
| Engine Model | U.S. EPA Tier 2 Equivalent U.S. EPA Tier 4 Final/EU Stage V | Cat C32B Cat C32B | |
| Bore | 145 mm | 5.7 in | |
| Stroke | 162 mm | 6.4 in | |
| Displacement | 32.1 L | 1,959 in ³ | |
| Engine Power | | | |
| Gross SAE J1995* | | | |
| Forward | 670 kW | 899 hp | |
| Reverse | 757 kW | 1,015 hp | |
| ISO 14396 | | | |
| Forward (U.S. EPA Tier 2 Equivalent) | 657 kW | 882 hp | |
| Forward (U.S. EPA Tier 4/EU Stage V) | 658 kW | 882 hp | |
| Reverse (U.S. EPA Tier 2 Equivalent) | 744 kW | 998 hp | |
| Reverse (U.S. EPA Tier 4/EU Stage V) | 745 kW | 999 hp | |
| Net SAE J1349/ISO9249 | | | |
| Forward | 634 kW | 850 hp | |
| Reverse (U.S. EPA Tier 2 Equivalent) | 714 kW | 957 hp | |
| Reverse (U.S. EPA Tier 4/EU Stage V) | 712 kW | 955 hp | |
| *Excludes all fan losses. | | | |
| Engine ratings apply at 1,800 rpm. | | | |
| Net power advertised is the power available at the fly wheel when the engine is equipped with air cleaner, muffler, alternator, fan and engine emissions controls as required. | | | |

| SERVICE REFILL CAPACITIES | | | |
|----------------------------|--------|-----------|--|
| Fuel Tank – Usable Volume | 1763 L | 466 gal | |
| Cooling System – Tier 4 | 177 L | 46.8 gal | |
| Cooling System – Tier 2 | 158 L | 41.7 gal | |
| Engine Crankcase Sump | 133 L | 35.1 gal | |
| Powertrain | 391 L | 103.3 gal | |
| Final Drives (each) | 40 L | 10.6 gal | |
| Track Roller Frames (each) | 94 L | 24.8 gal | |
| Pivot Shaft Oil | 104 L | 27.5 gal | |
| Hydraulic System Tank Only | 160 L | 42.2 gal | |

| WEIGHTS | | | |
|--|------------|------------|--|
| Operating Weight | 106 614 kg | 235,044 lb | |
| Single-shank ripper, U blade, 28" ES shoes | | | |
| Operating Weight – Carrydozer | 115 307 kg | 254,208 lb | |
| Single-shank heavy ripper, carrydozer blade, 36" ES shoes | | | |

| TRANSMISSION | | | |
|--------------|-----------|---------|--|
| 1.0 Forward | 4.0 km/h | 2.5 mph | |
| 2.0 Forward | 7.0 km/h | 4.4 mph | |
| 3.0 Forward | 12.2 km/h | 7.6 mph | |
| 1.0 Reverse | 4.8 km/h | 3.0 mph | |
| 2.0 Reverse | 8.5 km/h | 5.3 mph | |
| 3.0 Reverse | 14.7 km/h | 9.1 mph | |

| D11 BLADE | CAPACITY | | WIDTH OVER ENDBITS | | HEIGHT | |
|-----------------------|---------------------|----------------------|--------------------|---------|---------|---------|
| Semi-Universal | 27.2 m ³ | 35.6 yd ³ | 5584 mm | 18.3 ft | 2866 mm | 9.4 ft |
| Universal | 34.4 m ³ | 45.0 yd ³ | 6340 mm | 20.8 ft | 2875 mm | 9.4 ft |
| Carrydozer | 43.6 m ³ | 57 yd ³ | 6704 mm | 22.0 ft | 3236 mm | 10.6 ft |
| Reclamation Universal | 42.1 m ³ | 55 yd ³ | 6399 mm | 21.0 ft | 3199 mm | 10.2 ft |
| Coal Universal | 75 m ³ | 98.0 yd ³ | 8155 mm | 26.8 ft | 3064 mm | 10.1 ft |
| Coal Universal | 65 m ³ | 85.5 yd ³ | 7277 mm | 23.9 ft | 3064 mm | 10.1 ft |

| DIMENSIONS | D11 | | D11 CD | |
|---|-----------|----------|-----------|----------|
| Ground Clearance* | 798 mm | 31.4 in | 798 mm | 31.4 in |
| Track Gauge | 2896 mm | 114 in | 2896 mm | 114 in |
| Width Without Trunnions (standard shoe) | 3782 mm | 148.9 in | 3806 mm | 149.8 in |
| Height (FOPS cab)* | 4405 mm | 173.4 in | 4405 mm | 173.4 in |
| Length of Track on Ground | 4444 mm | 175 in | 4444 mm | 175 in |
| Overall Length – Basic Dozer | 6160 mm | 242.5 in | 6160 mm | 242.5 in |
| Overall Length with SU Blade and SS Ripper** | 10 525 mm | 414.4 in | 10 712 mm | 421.7 in |
| *Includes grouser height for total dimensions on hard surfaces. | | | | |
| **CD Blade on D11 CD | | | | |

STANDARD & OPTIONAL EQUIPMENT

Standard and optional equipment may vary. Consult your Cat dealer for details.

| OPERATOR EQUIPMENT | STANDARD | OPTIONAL |
|---|----------|----------|
| ROPS/ FOPS, Sound-Suppressed Cab | • | |
| High-Definition Primary Touchscreen Display | • | |
| MineStar Terrain Display | | • |
| Visibility – Rearview Mirrors | • | |
| Visibility – Camera: Ripper Tip View | | • |
| Visibility – Dual Camera | | • |
| Visibility – Four Cameras, 360 Degree View | | • |
| Air Conditioner and Heater with Automatic Climate Control | • | |
| Seat – Cloth with Air Suspension | • | |
| Seat – Heated, Cooled, Adjustable Lumbar and Bolsters | | • |
| Cab Glass – Single-Pane Tinted Safety | • | |
| Cab Glass – Dual-Pane Laminated Impact Safety | | • |
| Cab Glass – High-Pressure Safety (4 0 psi / 275 kPa) | | • |
| Cab Access – Blade Push-Arm Steps and Grab Handle | • | |
| Cab Access – Powered Ladder with Alarm | | • |
| CAT TECHNOLOGY PRODUCTS | STANDARD | OPTIONAL |
| VIMS SM | • | |
| Automated Blade Assist (ABA) | • | |
| AutoCarry TM | | • |
| Auto Ripper Control | | • |
| Terrain with 3D Blade Control | | • |
| Terrain Ready | | • |
| Cat Product Link TM Elite (cellular) | • | |
| Cat Product Link Elite Dual Mode (cellular + satellite) | | • |
| Command for Dozing Ready | | • |
| MAINTENANCE AND SERVICE | STANDARD | OPTIONAL |
| Ecology Fluid Drains – All Compartments | • | |
| Hinged Bottom Guards | • | |
| Sound-Reduction Sealed Bottom Guards | | • |
| High-Speed Oil Change – Engine and Transmission | • | |
| Ground-Level Fast Fuel Fill | • | |
| Ground-Level Fluid Fill and Drain | | • |
| Ground-Level Electrical Service Station | • | |
| S-O-S SM Fluid Sampling Ports | • | |
| Diagnostic Connector | • | |
| Ripper Lubrication – Autolube with Ground-Level Fill | | • |

| UNDERCARRIAGE | STANDARD | OPTIONAL |
|--|----------|----------|
| Suspension-Type Undercarriage | • | |
| Sleeve Bearing Track | • | |
| Lifetime-Lubricated Rollers and Idlers | • | |
| Track Shoe (ES): 710/810/915 mm (28/32/36 in) Width | • | |
| Track Shoe (Super Extreme Service [SES]): 710/810/915 mm (28/32/36 in) Width | | • |
| Track Links – Heavy-Duty XL – Duralink | | • |
| Track Shoe – Abrasion Resistant | | • |
| Track Shoe – Anti-Packing Round Hole | | • |
| Abrasion Rollers and Idlers | | • |
| Cold-Weather Rollers | | • |
| Carrier Roller | | • |
| ELECTRICAL | STANDARD | OPTIONAL |
| 24V Electric Start, Dual Starters | • | |
| Batteries – 4x4, 200-Amp Hour, 12V | • | |
| Battery Isolation | • | |
| Battery Isolation – Dual Pole | | • |
| Lights – LED – 13 Positions | • | |
| Lights – Premium LED – 13 Positions | | • |
| HYDRAULICS | STANDARD | OPTIONAL |
| Electronically Controlled, Load-Sensing Dozer Lift and Tilt | • | |
| Electronically Controlled, Load-Sensing Ripper Lift and Pitch | • | |
| Dozer Blade – Dual Tilt | • | |
| Dozer Extended Blade Pitch | | • |
| Electronically Enabled Blade – Quick Drop | • | |
| Ripper Pin Puller | | • |
| OTHER | STANDARD | OPTIONAL |
| Fire Suppression Ready | | • |
| Fire Suppression Installed | | • |
| CAT POWERTRAIN | STANDARD | OPTIONAL |
| Cat C32B Engine – US EPA Tier 4 Final, US EPA Tier 2 Equivalent, EU Stage V | • | |
| Enhanced Auto Shifting (EAS) | • | |
| Auto Engine Idle Shutdown | • | |
| Thermal Manifold and Turbo Shields | • | |
| High-Performance Single-Plane Cooling Module | • | |
| Stator Clutch Torque Divider – Electronic Control | • | |
| Powershift Transmission – Three-Speed Electronic Shift | • | |
| Hydraulic Cooling Fan – Automatic Reversing | | • |



D11

DOZER BUILD 07B

For more complete information on Cat products, dealer services and industry solutions, visit us at www.cat.com

©2025 Caterpillar. All Rights Reserved.

Materials and specifications are subject to change without notice. Featured machines in photos may include additional equipment. See your Cat dealer for available options.

© 2025 Caterpillar. All Rights Reserved. CAT, CATERPILLAR, LET'S DO THE WORK, their respective logos, "Caterpillar Yellow", the "Power Edge" and Cat "Modern Hex" trade dress as well as corporate and product identity used herein, are trademarks of Caterpillar and may not be used without permission.

PEDJ0436_01
Build Number: 07B

