



Excavator OEM Solution
 Caterpillar Inc.
 100 NE Adams St
 Peoria, IL 61629-1900 USA

Technical Specifications of 326 GC SLR

Dear,
 Per the tender requirements, we are pleased to offer our CATERPILLAR 326 GC SLR (18 Meters), with the following dimensions, total operating weight of 27,927 kg, complete unit ex-factory of Caterpillar, equipped with 0.31 cubic meter Bucket.

Brand: CATERPILLAR
 Model: 326 GC SLR Customized Hydraulic Excavator from Caterpillar
 Engine: Cat C7.1 Single Turbo Tier 3 engine equivalent to U.S. EPA Tier 3 and EU Stage IIIA

Table of Contents

Specifications	2		
Operating weights and Ground pressure.....	2	Sound Performance	2
Engine.....	2	Dimensions	3
Swing Mechanism	2	Working Rages	4
Track	2	Super Long Reach Lift Capacities	5
Drive	2		
Hydraulic System	2		
Service Refill Capacities	2		
Standards	2		

Technical Specifications of 326 GC SLR

Operating weights and Ground Pressure

Operating Weight:	27,927kg
Counterweight:	5.7 Ton
Track shoe width:	900mm TG
Number of Track Roller (each side)	8
Number of Carrier Roller (each side)	2
Bucket size:	0.31m3 GD
Ground Pressure	39.0kPa

Engine	
Engine Model	Cat® C7.1 Single Turbo
Net Power	
ISO 9249	157.8 KW
ISO 9249 (DIN)	212 hp (metric)
Engine Power	
ISO 14396	159 KW
ISO 14396 (DIN)	213 hp (metric)
Bore	105 mm 4 in
Stroke	135 mm 5 in
Displacement	7.0 L 428 in ³
Biodiesel Capability	Up to B20 ⁽¹⁾

- Meets China Nonroad Stage III emission standards, equivalent to U.S. EPA Tier 3 and EU Stage IIIA.
- Recommended for use up to 4500 m (14,760 ft) altitude with engine power derate above 3000 m (9,840 ft).
- Advertised power is tested per the specified standard in effect at the time of manufacture.
- Net power advertised is the power available at the flywheel when the engine is equipped with fan, air intake system, exhaust system and alternator.
- Engine speed at 1,900 rpm.

⁽¹⁾ Cat engines are compatible with diesel fuel blended with the following lower-carbon intensity fuels up to:

- ✓ 100% biodiesel FAME (fatty acid methyl ester)*
- ✓ 100% renewable diesel, HVO (hydrogenated vegetable oil) and GTL (gas-to-liquid) fuels

Refer to guidelines for successful application. Please consult your Cat dealer or "Caterpillar Machine Fluid Recommendations" (SEBU6250) for details.

*For use of blends higher than 20% biodiesel, consult your Cat dealer.

Swing Mechanism	
Swing Speed	10.52 rpm
Maximum Swing Torque	106 KNm
Standards	
Brakes	ISO 10265-2008
Cab/Operator protection Guard (OPG) (Optional)	ISO 10262 – 1998 Level II

Drive	
Gradeability	35°/70%
Maximum Travel Speed	5.57 Km/h 3.5 mph
Maximum Drawbar Pull	227 KN 51,481 lbf

Hydraulic System	
Main System – Maximum Flow – Implement	481 L/min 127 gal/min (241 × (64 × 2 pumps))
Maximum Pressure Equipment – Normal	35 000 kPa 5,075 psi
Maximum Pressure – Travel	35 000 kPa 5,075 psi
Maximum Pressure – Swing	28 400 kPa 4,118 psi
Boom Cylinder – Bore	135 mm 5 in
Boom Cylinder – Stroke	1305 mm 51in
Stick Cylinder – Bore	150 mm 6 in
Stick Cylinder – Stroke	1870 mm 74 in
Bucket Cylinder – Bore	100 mm 4 in
Bucket Cylinder – Stroke	939 mm 37 in

Service Refill Capacity	
Fuel Tank Capacity	474 L 125.2 gal
Cooling System	25 L 6.6 gal
Engine Oil (with filter)	25 L 6.6 gal
Swing Drive	11.5 L 3.0 gal
Final Drive (each)	4.5 L 1.2 gal
Hydraulic System (including tank)	310 L 81.9 gal
Hydraulic Tank (including suction pipe)	147 L 38.8 gal

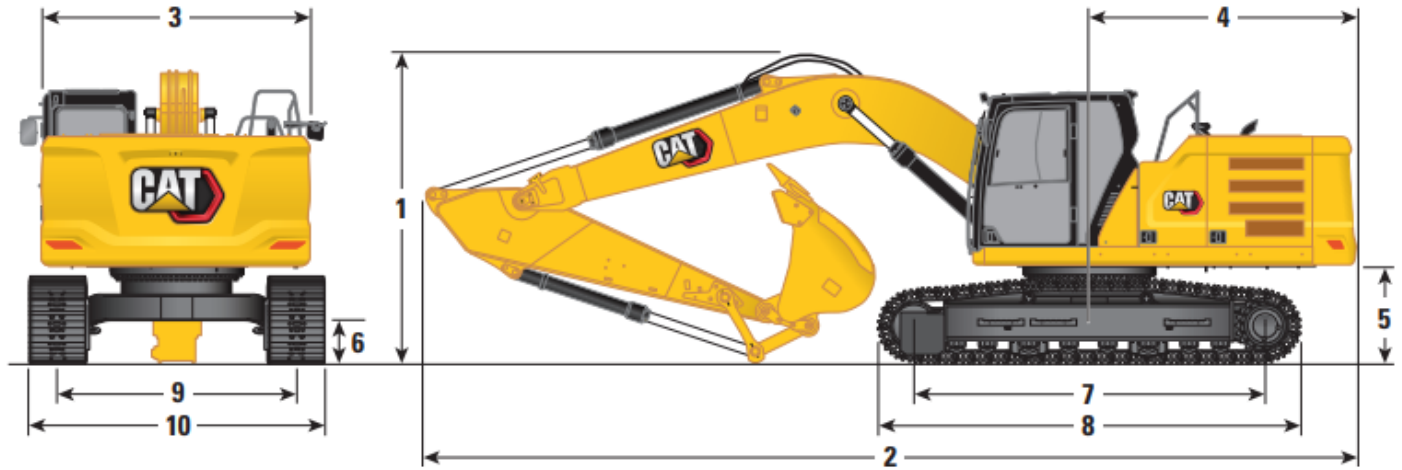
Sound Performance	
ISO 6395 (external)	104 dB(A)
ISO 6396 (inside cab)	70 dB(A)

- When properly installed and maintained, the cab offered by Caterpillar, when tested with doors and windows closed according to ANSI/SAE J1166 OCT98, meets OSHA and MSHA requirements for operator sound exposure limits in effect at time of manufacture.
- Hearing protection may be needed when operating with an open operator station and cab (when not properly maintained or doors/ windows open) for extended periods or in a noisy environment.

Technical Specifications of 326 GC SLR

Dimension

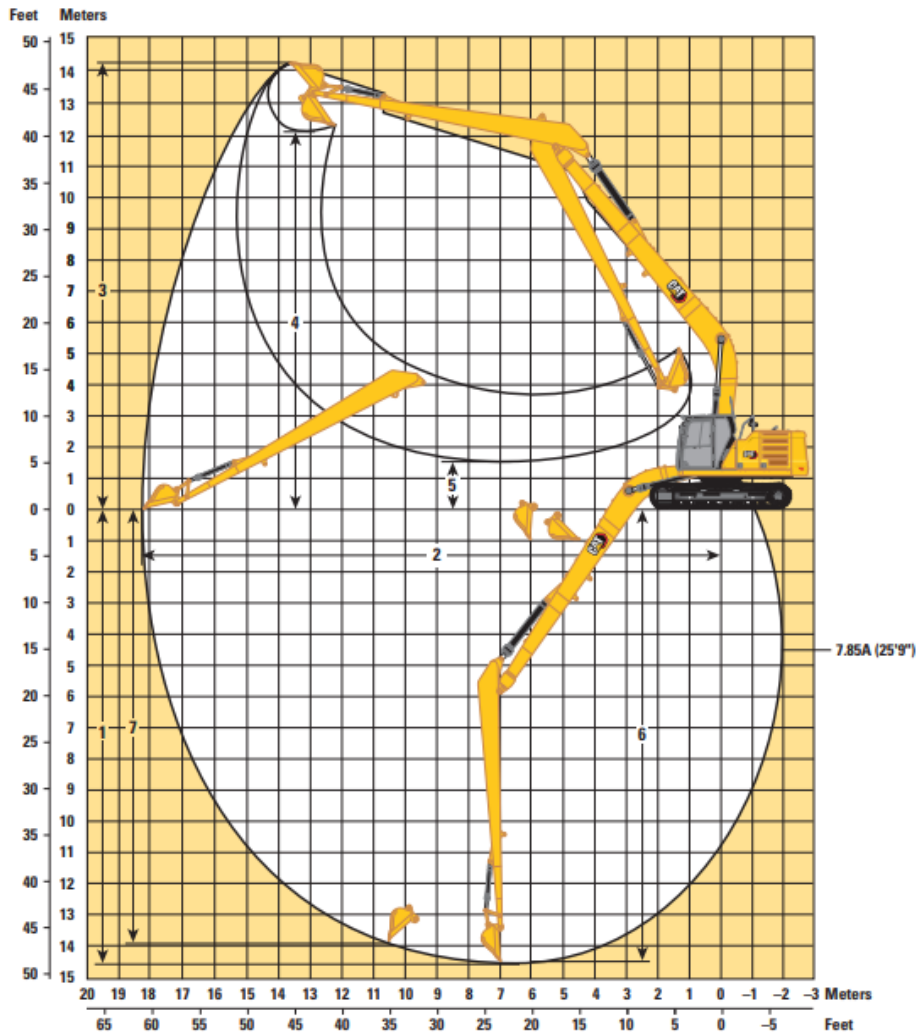
All dimensions are approximate and may vary depending on bucket selection.



Boom Option	SLR BOOM 10.2 m (33'5")
Stick Option	SLR Stick 7.85A (25'9")
1 Machine Height:	
Top of Cab height	3000 mm
Top of FOGS height	3140 mm
Guardrails/Handrails height	3000 mm
With boom/stick/bucket installed	3160 mm
With boom/stick installed	3160 mm
With boom installed	3000 mm
2 Machine length:	
With boom/stick/bucket installed	14350 mm
With boom/stick installed	14350 mm
With boom installed	13250 mm
3 Upper frame width	2940 mm
4 Tail Swing Radius	3000 mm
5 Counterweight clearance	1060 mm
6 Ground clearance	440 mm
7 Track length- Length to center of rollers	3650 mm
8 Track length- Crawler Overall Length	4450 mm
9 Track Gauge	2590 mm
Track width	900 mm
10 Undercarriage width (with steps / without steps)	3490 mm
Bucket type	GD
Bucket Capacity	0.31 m ³
Bucket Tip Radius	1225 mm

Technical Specifications of 326 GC SLR

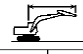
Working Ranges



Boom Option	SLR BOOM
	10.2 m (33'5")
Stick Option	SLR Stick
	7.85A (25'9")
1 Maximum Digging Depth	14 580 mm
2 Maximum Reach at Ground Line	18 280 mm
3 Maximum Cutting Height	14 210 mm
4 Maximum Loading Height	12 150 mm
5 Minimum Loading height	1 500mm
6 Maximum Depth Cut for 2440 mm (8ft) Level Bottom	14 480 mm
7 Maximum Vertical Wall Digging Depth	13 980 mm
Bucket Digging Force (ISO)	61.0 KN
Stick Digging Force (ISO)	45.0 KN
Bucket type	GD
Bucket Capacity	0.31 m ³
Bucket Tip Radius	1225 mm

Technical Specifications of 326 GC SLR

Super Long Reach Boom Lift Capacities – Counterweight: 6.25 mt (13,778 lb) – without Bucket

(mm) (ft/inch)	1500 5'0"	3000 10'0"	4500 15'0"	6000 20'0"	7500 25'0"	9000 30'0"	10500 35'0"	12000 40'0"	13500 45'0"	15000 50'0"	16500 55'0"		(mm) (ft/inch)			
12000 40'0"													* 1300 * 2850	* 1300 * 2850	13940 45'0 3/4"	
10500 35'0"													* 1250 * 2700	* 1250 * 2700	14930 48'0 7/8"	
9000 30'0"													* 1200 * 2650	* 1200 * 2650	15720 51'0 4/4"	
7500 25'0"													* 1200 * 2650	* 1200 * 2650	16330 53'0 5/8"	
6000 20'0"													* 1200 * 2650	* 1200 * 2650	16780 54'11 1/8"	
4500 15'0"													* 1200 * 2650	* 1200 * 2650	17090 56'0 0"	
3000 10'0"		* 4800 * 4800											* 1300 * 2800	* 1300 * 2800	17260 56'0 7/8"	
1500 5'0"		* 1500 * 3500	* 1500 * 3500	* 5400 * 12750	* 5400 * 12750	* 5700 * 12200	* 5700 * 12200	* 4400 * 9450	* 4400 * 9450	* 3650 * 7850	* 3600 * 7700	* 3150 * 6800	* 2800 * 6100	* 2800 * 6100	* 2550 * 5550	1850 59'5 1/2"
0		* 1600 * 3600	* 1600 * 3600	* 3600 * 8250	* 3600 * 8250	* 6600 * 14250	* 6600 * 11850	* 5000 * 10800	* 5000 * 8900	* 4150 * 8750	* 4150 * 7000	* 3450 * 7450	* 2800 * 5600	* 2650 * 6550	* 2650 * 5650	1900 62'0 0"
-1500 -5'0"	* 1550 * 3400	* 1550 * 3400	* 2050 * 4600	* 2050 * 4600	* 3450 * 7850	* 3450 * 7850	* 6500 * 14950	* 5000 * 10750	* 5500 * 11900	* 3800 * 8100	* 4450 * 9600	* 3000 * 6400	* 3650 * 7900	* 2400 * 5150	* 2000 * 4200	2050 67'3 1/8"
-3000 -10'0"	* 2150 * 4750	* 2150 * 4750	* 2650 * 5900	* 2650 * 5900	* 3800 * 8550	* 3800 * 8550	* 6200 * 14100	* 4700 * 10150	* 5550 * 11950	* 3550 * 7600	* 4350 * 9300	* 2800 * 6000	* 3500 * 7550	* 2250 * 4850	* 2900 * 6250	2100 69'0 0"
-4500 -15'0"	* 2750 * 6100	* 2750 * 6100	* 3250 * 7300	* 3250 * 7300	* 4350 * 9800	* 4350 * 9800	* 6500 * 14750	* 4600 * 9900	* 5400 * 11600	* 3400 * 7300	* 4200 * 9050	* 2650 * 5700	* 3400 * 7300	* 2150 * 4600	* 2850 * 6100	2150 70'0 0"
-6000 -20'0"	* 3350 * 7500	* 3350 * 7500	* 3950 * 8800	* 3950 * 8800	* 5050 * 11400	* 5050 * 11400	* 7150 * 15950	* 4600 * 9850	* 5350 * 11500	* 3350 * 7200	* 4150 * 8900	* 2600 * 5600	* 3350 * 7200	* 2100 * 4500	* 2800 * 6000	2100 69'0 0"
-7500 -25'0"	* 4050 * 9000	* 4050 * 9000	* 4700 * 10550	* 4700 * 10550	* 5900 * 13300	* 5900 * 13300	* 7500 * 16150	* 4650 * 10000	* 5350 * 11550	* 3350 * 7250	* 4150 * 8900	* 2600 * 5600	* 3350 * 7200	* 2100 * 4500	* 2800 * 6000	2100 69'0 0"
-9000 -30'0"	* 4750 * 10650	* 4750 * 10650	* 5550 * 12450	* 5550 * 12450	* 6900 * 15650	* 6900 * 15650	* 7450 * 16100	* 4750 * 10300	* 5450 * 11750	* 3450 * 7400	* 4200 * 9050	* 2650 * 5750	* 3400 * 7350	* 2150 * 4650	* 2850 * 6150	2150 70'0 0"
-10500 -35'0"	* 5550 * 12450	* 5550 * 12450	* 6500 * 14700	* 6500 * 14700	* 8200 * 18600	* 8200 * 18600	* 7800 * 14800	* 5000 * 10750	* 5550 * 11900	* 3600 * 7750	* 4350 * 9350	* 2800 * 6000	* 3500 * 7600	* 2250 * 4900	* 3000 * 6500	2150 70'0 0"
-12000 -40'0"			* 7650 * 17350	* 7650 * 17350	* 7700 * 16300	* 7700 * 16300	* 6000 * 12750	* 5300 * 11450	* 4850 * 10250	* 3850 * 8300	* 3950 * 8300	* 3000 * 6500				2150 70'0 0"



ISO 10567



*Indicates that the load is limited by hydraulic lifting capacity rather than tipping load. The above loads are in compliance with hydraulic excavator lift capacity standard ISO 10567:2007. They do not exceed 87% of hydraulic lifting capacity or 75% of tipping load. Weight of all lifting accessories must be deducted from the above lifting capacities. Lifting capacities are based on the machine standing on a firm, uniform supporting surface. The use of a work tool attachment point to handle/lift objects, could affect the machine lift performance.

Lift capacity stays with ±5% for all available track shoes.

Always refer to the appropriate Operation and Maintenance Manual for specific product information.

Prepared by:
EXCAVATOR OEM GCN1/ASIA SALES/ PRODUCT SUPPORT
EXCAVATOR HEDC ENGINEERING