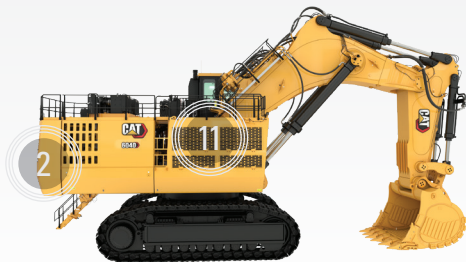


THE NEXT GENERATION
CAT® 6040 HYDRAULIC
MINING SHOVEL
(DIESEL VERSION)

THE PRODUCTIVITY
YOU DEMAND.
THE DURABILITY
YOU EXPECT.



1. NEW Heavy Duty — Improved track for increased reliability and improved performance
2. Easily accessible ground level service station.
3. NEW 45° powered stairway with audible alarm plus visual beacon
4. Safety features designed in accordance with mining safety best practices.
5. Updated product identity.
6. Fast cycle times with TriPower System.
7. NEW cab riser module with Cat® Electronics.
8. NEW state-of-the-art operator's cab with 40% greater visibility.*
9. Integrated Technology: Cat Payload, Cat Vision 360, and Operator Assist — Enhanced Motion Control.
10. NEW power module includes two C32B engines with A6 controller.
11. Oil cooler module with fully independent oil cooling system.
12. NEW single-line grease system for streamlined serviceability.
13. Updated and simplified grease tank assembly.
14. Up to 15% more fuel efficient with Hydraulic Optimization.*
15. NEW fixed pin design on critical attachment pin locations.
16. Cat MineStar™ Solutions ready with Product Link™ Elite for improved connectivity.



*Compared to previous model

THE NEXT GENERATION
**CAT® 6040 HYDRAULIC
 MINING SHOVEL**
 (DIESEL VERSION)



2,079 hp / 1550 kW
 ENGINE OUTPUT

BACKHOE: 44 t / 40 mt
 FACE SHOVEL: 44 t / 40 mt
 BUCKET PAYLOAD

BACKHOE: 453 t / 411 mt
 FACE SHOVEL: 453 t / 411 mt
 OPERATING WEIGHT



CAB

- » 40% greater visibility with unobstructed views of the work area and clear sightlines to the tracks via an integrated floor window.
- » Improved operator comfort with Cat seat and joysticks.
- » First-in-class and innovative 3-seat design.
- » Elevated full-size trainer's seat and laptop work desk.
- » Standard dual hydraulic HVAC system with enhanced performance.
- » Superior insulation for reduced noise and temperature control.

SERVICEABILITY

- » 30% more time between refills with updated grease system.
- » Better organized components plus all Cat hoses.
- » Dedicated quick disconnect sample ports.
- » Access to Cat Electronic Technician helps dealer service personnel more easily diagnose and prevent issues.



ENGINES

- » Durable Cat C32B engines offer unsurpassed performance and have been proven to withstand the challenging conditions found at mine sites across the globe.
- » High power output and proven reliability.
- » New and improved engine design improves reliability.
- » Hydraulic efficiency enables the engines to burn less fuel, which improves fuel efficiency up to 15%.*
- » Maintenance downtime is reduced thanks to exchange intervals for engine oil that have been increased from 500 to 1,000 hours. (Requires optional oil change interval extension attachment.)
- » Highly regulated engines satisfy U.S. EPA Tier 4 emission requirements and eliminate the need for DEF, saving time and cost.



ELECTRONICS

- » Integration of proven and validated Cat electronics delivers additional performance and reliability advantages.
- » Intuitive, informative onboard electronics help operators be more productive.
- » Common designs and componentry streamline maintenance.
- » Connectivity features and integrated Cat MineStar Health offerings enable a proactive approach to maintenance and allow for remote troubleshooting plus flashing.



**Compared to previous model*



AEXQ4673

© 2026 Caterpillar. All Rights Reserved. CAT, CATERPILLAR, LET'S DO THE WORK, their respective logos, "Caterpillar Corporate Yellow", the "Power Edge" and Cat "Modern Hex" trade dress as well as corporate and product identity used herein, are trademarks of Caterpillar and may not be used without permission.