

TH0642/TH0842/ TH1055/TH1255

TELEHANDLERS



	TH0642	TH0842	TH1055	TH1255
Rated Load Capacity	2722 kg (6,000 lb)	3629 kg (8,000 lb)	4536 kg (10,000 lb)	5443 kg (12,000 lb)
Max Lift Height	12.8 m (42.1 ft)	12.8 m (42.1 ft)	16.6m (54.6 ft)	16.6 m (54.6 ft)
Engine Power (Standard)	55 kW (74 hp)	55 kW (74 hp)	55 kW (74 hp)	55 kW (74 hp)
Engine Power (Optional)	—	86 kW (115 hp)	86 kW (115 hp)	86 kW (115 hp)



The Cat® Telehandlers (TH) are designed with the reliability, durability and ease of service you expect from a Cat machine. With the Cat C3.6 engine and Cat parts, you get the quality and performance you need and more.

NEXT GENERATION CAT® TELEHANDLERS REDESIGNED AROUND YOUR NEEDS



CAT® QUALITY AND DURABILITY

Completely redesigned around your needs, the all-new Cat Telehandlers are focused on safety and ease of operation, with extended services intervals so they're ready to work when you are.



SAFETY



RELIABILITY



SIMPLICITY



DURABILITY



SERVICEABILITY

ALL NEW. ALL YOU. REACH NEW HEIGHTS



ENHANCED SAFETY

Your safety is our top priority, and the Cat Telehandler is designed to help keep you safer on the job. Equipped with standard safety features including the operator presence seat switch, rearview camera, load stability indication (LSI) system and built-in security system.

Optional features such as the hydraulic lockout switch and seatbelt reminder system are also available.

BUILT FOR PERFORMANCE

With the Cat C3.6 Tier 4 Final Engine and 55 kW (74 hp) or 86 kW (115 hp) options, you have the right power for the job. The 4-speed powershift transmission and travel speeds up to 32 km/h (20 mph) help you work faster and more efficiently on the jobsite.

READY FOR YOUR JOBSITE

Choose between our different coupler options, and a wide selection of attachments. Customize your machine for your exact needs with add-on kits such as roading lights, brick guards, cold weather start package and fenders, just to name a few.

THE RIGHT MACHINE FOR YOU

TH0642/TH0842/TH1055/TH1255

There are four telehandler models to choose from offering you different load capacities and reach heights.

TH0642

Rated Load Capacity	2722 kg (6,000 lb)
Max Lift Height	12.8 m (42.1 ft)
Maximum Forward Reach	8.4 m (27.6 ft)
Operating Weight	9819 kg (26,647 lb)
Engine Power (Standard)*	55 kW (74 hp)
Engine Power (Optional)*	NA
Turning Radius over Tires (2-wheel steer)	6.64 m (261 in)
Turning Radius over Tires (circle/4-wheel steer)	3.97 m (156 in)

Stabilizers not available for this model.



TH0842

Rated Load Capacity	3629 kg (8,000 lb)
Max Lift Height	12.8 m (42.1 ft)
Maximum Forward Reach	8.4 m (27.6 ft)
Operating Weight	10 599 kg (23,366 lb)
Engine Power (Standard)*	55 kW (74 hp)
Engine Power (Optional)*	86 kW (115 hp)
Turning Radius over Tires (2-wheel steer)	6.64 m (261 in)
Turning Radius over Tires (circle/4-wheel steer)	3.97 m (156 in)

Stabilizers not available for this model.



*Cat® C3.6 engine meets U.S. EPA Tier 4 Final/EU Stage V emissions standards.

ALL MACHINES INCLUDE:

- Operator Presence Seat Switch
- Load Stability Indication System (LSI)
- LCD Monitor with Backup Camera
- Multifunction Pilot Controlled Joystick
- Premium Cat Comfort Inside the Cab

TH1055



Rated Load Capacity	4536 kg (10,000 lb)
Max Lift Height	16.6 m (54.6 ft)
Maximum Forward Reach	12.5 m (41 ft)
Operating Weight	13 534 kg (29,838 lb)
Engine Power (Standard)*	55 kW (74 hp)
Engine Power (Optional)*	86 kW (115 hp)
Turning Radius over Tires (2-wheel steer)	6.57 m (259 in)
Turning Radius over Tires (circle/4-wheel steer)	3.98 m (157 in)

Stabilizers standard on this model.

TH1255



Rated Load Capacity	5443 kg (12,000 lb)
Max Lift Height	16.6 m (54.6 ft)
Maximum Forward Reach	12.5 m (41 ft)
Operating Weight	14 169 kg (31,238 lb)
Engine Power (Standard)*	55 kW (74 hp)
Engine Power (Optional)*	86 kW (115 hp)
Turning Radius over Tires (2-wheel steer)	6.57 m (259 in)
Turning Radius over Tires (circle/4-wheel steer)	3.98 m (157 in)

Stabilizers standard on this model.

*Cat® C3.6 engine meets U.S. EPA Tier 4 Final/EU Stage V emissions standards.

OPERATOR STATION

SAFETY AND COMFORT ON EVERY JOB

1 MECHANICAL SUSPENSION SEAT

Upgraded mechanical suspension seat for a smoother and more enjoyable ride.

2 OPERATOR PRESENCE SEAT SWITCH

Protects against machine operation without a seated operator by setting the parking brake and locking out the drive and hydraulic functions when an operator isn't detected. Enhances jobsite safety by keeping operators in the safest place – in the machine where they are protected by Rollover Protective Structure (ROPS) and Falling Object Protective Structure (FOPS).

3 HIGH VISIBILITY ORANGE SEATBELT

Makes it easier to monitor and promote safety best practices.

The optional Seatbelt Reminder System takes overseeing safety a step further by giving auditory and visual alerts on the monitor to the operator if the seatbelt is not buckled when the machine is being actively used. The system also uses telematics to document machine operation when the seatbelt is not engaged.



4 REARVIEW CAMERA

Allows for enhanced visibility on the jobsite. The camera image is displayed when reversing or a continuous viewing option can be selected via a soft key in the monitor.

5 SECURITY SYSTEM

A standard security system within the monitor provides a theft deterrent and prevents unwanted machine operation on the jobsite. The 4-digit passcode system supports up to 50 unique operator codes.





6 LOAD STABILITY INDICATOR

The Load Stability Indication (LSI) system enhances operator awareness by providing visual and audible alerts related to the machine's forward stability. Designed as a supplemental aid, the LSI system helps equip operators to make informed decisions during operation to reduce risk of tipping.



7 HYDRAULIC LOCKOUT SWITCH OPTION

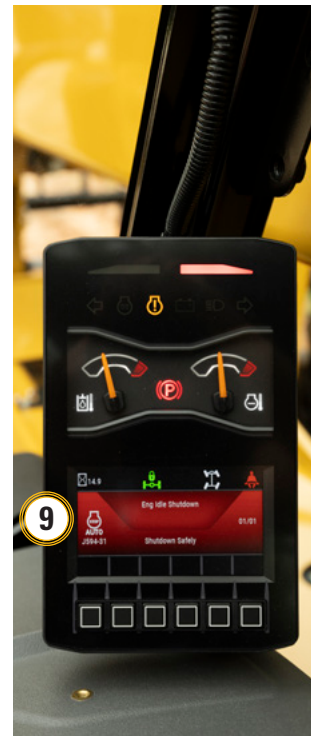
Positioned for easy access, an optional dash-mounted switch helps guard against inadvertent hydraulic movement of the boom, attachment and other hydraulic functions.

8 TILT STEERING COLUMN

Allows operators the flexibility to adjust the steering wheel for maximum comfort and precise maneuverability.

9 ENGINE IDLE SHUTDOWN

This customizable feature automatically shuts down the engine after a preset period of inactivity, minimizing unnecessary engine hours, cutting down on fuel usage and lowering overall operating costs.





EASE OF OPERATION AN EXTENSION OF YOU

1 PILOT CONTROLLED JOYSTICK

Inspires operator confidence by delivering smooth, predictable, multi-functioning controllability. Proportional joystick mounted thumb rollers provide one-hand control of the tilt/rack back functions and the auxiliary hydraulics.

2 FULL COLOR LCD MONITOR

The easy-to-use monitor brings crucial information right to your fingertips.

- Displays real time information of machine systems, active steering mode, travel gear, travel speed, and more
- Real time digital display for the boom angle and the chassis frame angle
- Select from 1 of 4 language choices
- Standard multi-operator code security system

3 THREE STEERING MODES

Operators can choose from three steering modes to enhance maneuverability based on the jobsite needs: two-wheel steering for roading, four-wheel (circle) steering for the tightest turning radius, and crab steering for precise movement in confined spaces.



DESIGNED TO A HIGHER STANDARD

INTUITIVE DESIGN AND PREMIUM ERGONOMICS

4 AXLE MOUNTED STABILIZERS

Make final adjustments with frame leveling even after your outriggers are engaged for more precise pick up and placement of loads.

5 MASTER DISCONNECT – BATTERY SWITCH

Ergonomic design makes it easy to turn the battery power on or off. The disconnect switch features an integrated slot that allows for Lock Out – Tag Out to safeguard employees from the unexpected energization or startup of machine. The slot feature can also be used with a padlock for additional machine security.

6 ENHANCED VISIBILITY

The narrower dual C-channel boom redesign, combined with a lowered engine compartment and contoured hood, provides a clearer line of sight to the machine's right side. This enables operators to transport heavy loads at lower heights without compromising visibility.

7 STANDARD LED LIGHTING

Optimal placement prevents light from reflecting off the boom and focuses on areas that typically have lower illumination to deliver maximum lighting in varying jobsite environments and conditions.

8 STANDARD INTEGRATED LIFTING EYE

Rated to match the operating capacity of the machine helping you complete all your lifting and material handling needs.



Combining a wide selection of Cat Telehandler attachments with either the industry-standard TH coupler or the Integrated Tool Carrier (IT) coupler, the Next Generation Cat Telehandlers deliver exceptional versatility to meet the varied demands of today's jobsites.

STANDARD TH COUPLER



The industry standard smaller, lighter weight quick coupler offers improved fork visibility and enhanced load capacity. Available only as a manual coupler.

IT COUPLER



The traditional Cat telehandler coupler is available as a manual coupler or as a hydraulic coupler, allowing you to change your attachments from the cab with a push of the button.

AUXILIARY HYDRAULIC CONNECTIONS

These machines come standard with auxiliary hydraulics to meet your attachment needs. Choose between capped auxiliary lines or twist-to-connect couplings.

TWIST TO CONNECT AUXILIARY LINES



CAPPED AUXILIARY LINES



ATTACHMENTS TO EXTEND YOUR CAPABILITIES FURTHER



STANDARD CARRIAGE – The standard tilt carriage is essential on most jobsites and is ideal for handling palletized loads. Typically used in general construction, masonry, agriculture, steel erection, material handling and building construction applications.

SIDE TILT-ROTATE CARRIAGE – The side tilt-rotate carriage allows the operator to move the carriage hydraulically from the operator's seat for precise positioning of a load, even when on uneven terrain. Provides hydraulic rotation of $\pm 10^\circ$ side-to-side tilt on the vertical plane. The standard width carriage is designed for moving palletized loads, bricks and blocks. The wide width carriage is suited for moving bulk sheets of plywood, sheetrock, lumber and pipe.



HYDRAULIC FORK POSITIONER CARRIAGE – The fork positioner carriage allows the operator to hydraulically alter the spacing of the forks from the operator's seat, improving precision and efficiency in handling palletized loads of varying dimensions.

GENERAL PURPOSE BUCKETS – General purpose buckets are designed to optimize the performance of Cat Telehandlers with loose materials when loading, carrying, dumping and performing cleanup work in a variety of applications. This all-purpose bucket is ideal for general contractors, brick masons, plumbing contractors, municipalities and site maintenance applications.



TRUSS BOOMS – The truss boom is designed to lift and place materials, such as roof trusses, frames and beams as well as equipment. With its added horizontal and vertical reach, the truss boom allows for materials and equipment to be placed in hard-to-reach areas.

INNOVATIVE FORK CARRIAGE DESIGN

REPLACEABLE BACK REST

Bolt-on backrest offers easy replacement if damaged instead of needing to repair or replace the entire carriage.

SLIM PROFILE

Integrated fork bar design removes bulky retaining collars, delivering a narrower carriage for more seamless loading and unloading in tight fit applications.



SERVICE WITHIN YOUR REACH



Maintenance is quick and effortless on Cat Telehandlers. Daily check points are accessible at ground level with grouped service points, and an easy-to-use service tool. You can rest easy with the standard 5-year/5,000-hour warranty for the main frame and boom sections.

For machines equipped with stabilizers, the 5-year/5,000-hour warranty coverage extends to the stabilizer frame and legs.



STREAMLINED SERVICE SOLUTIONS

EXTENDED SERVICE LIFE

- 500-hour greasing intervals
- 500-hour service interval for boom, engine, and chassis service interval
- 3000-hour hydraulic fluid*
- 6000-hour extended engine coolant*
- Lubed for life axle kingpins, driveshaft u-joints and splines
- Premium wear pad material

*Intervals can be lengthened beyond the stated hours, up to 2 times longer. Consult your local dealer for more information.

EASY SERVICE

- Daily service check points and fill points are easy to access from ground level
- Grouped Service Points for quicker maintenance
- Lock Out - Tag Out on Battery Disconnect
- Lockable Fill Ports to prevent mixing of fluids

CHAIN MAINTENANCE

AS EASY AS 1.2.3

The Quick Check Chain Tool streamlines chain and wear pad inspections – one easy-to-use tool works across all four models for faster maintenance.

CHECKS:

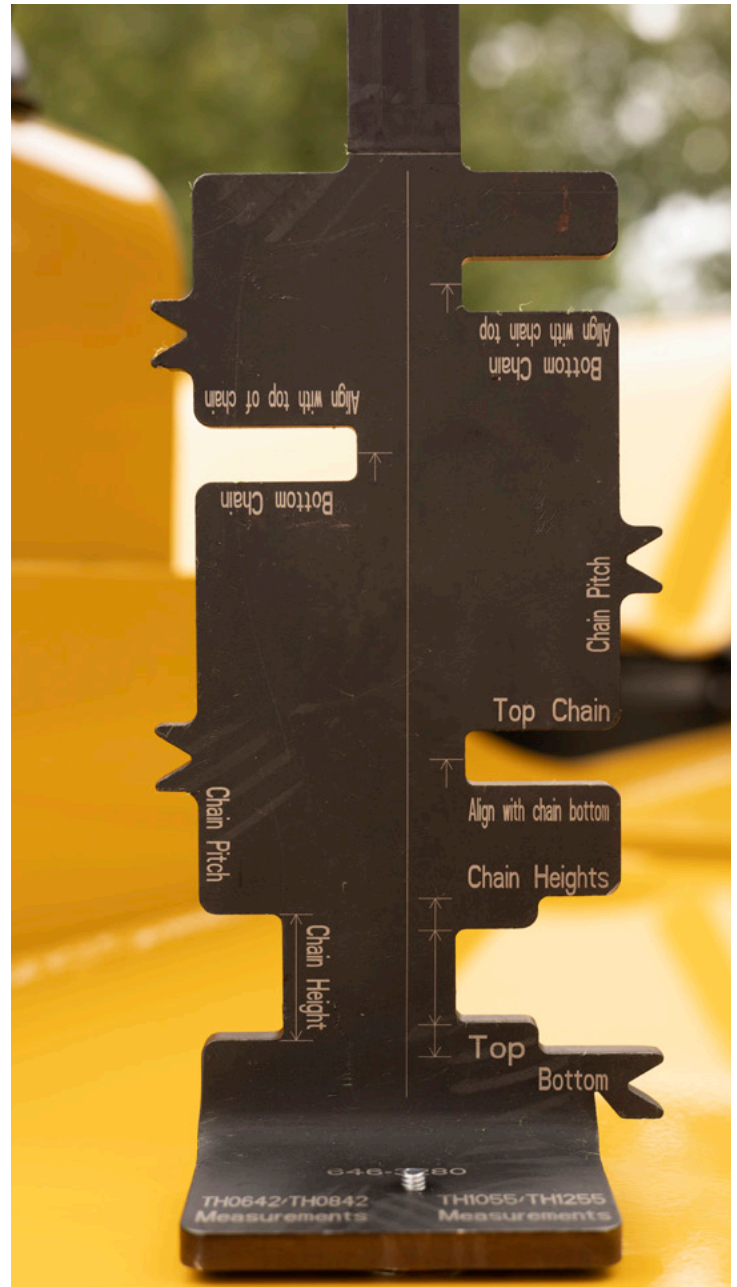
1. Chain Tension



2. Link Wear



3. Chain Stretch



4. Wear Pads



OPTIONAL FEATURES FOR EVERY APPLICATION



BEACON

SOLID OR
PNEUMATIC
TIRE OPTION



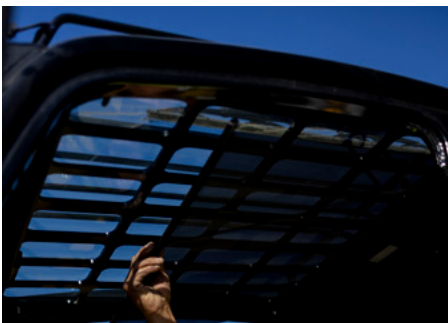
ENCLOSED CAB



HEAT/AC



FULL COVERAGE FENDERS



SUNSHADE



WINDOW GUARDS



ROADING LIGHTS

FLEET MONITORING SOLUTIONS

Cat telematics technology helps you run your jobsite more safely and efficiently, bringing key functionalities right to your fingertips and customizable for your specific needs.



CAT PRODUCT LINK™ ELITE

The Next Generation Cat Telehandlers are equipped with Product Link™ Elite to deliver important information in real time through VisionLink®. Using the Cat App, you can manage your assets at anytime right from your smart device. See fleet location and hours, get critical required maintenance alerts and request service from your Cat dealer. A few highlighted features include:

- **Remote Flash** lets you receive software updates to your machine remotely.
- **Remote Troubleshooting** allows for proactive service solutions as needed.

VISIONLINK®

Access information anytime, anywhere with VisionLink®—and use it to make informed decisions that boost productivity, lower costs, simplify maintenance and improve safety and security on your jobsite. With different subscription-level options, your Cat dealer can help you configure exactly what you need to connect your fleet and manage your business, without paying for extras you don't want. Subscriptions are available with cellular or satellite reporting or both.



RENOWNED CAT DEALER SUPPORT

Rely on your Cat Dealer to help you every step of the way with new or used machine sales, rental or rebuild options to meet your business needs.



TH0642/TH0842/TH1055/TH1255 Telehandler Specifications

ENGINE									
Cat® C3.6*	TH0642		TH0842		TH1055		TH1255		
Engine Power (Standard) – ISO 14396:2002	55 kW	74 hp	55 kW	74 hp	55 kW	74 hp	55 kW	74 hp	
Engine Power (Optional) – ISO 14396:2002	—	—	86 kW	115 hp	86 kW	115 hp	86 kW	115 hp	
Displacement	3.6 L	220 in ³	3.6 L	220 in ³	3.6 L	220 in ³	3.6 L	220 in ³	

*Meets U.S. EPA Tier 4 Final/EU Stage V emission standards.

OPERATING SPECIFICATIONS*									
	TH0642		TH0842		TH1055		TH1255		
Operating Weight	9819 kg	21,647 lb	10 599 kg	23,366 lb	13 534 kg	29,838 lb	14 169 kg	31,238 lb	
Rated Load Capacity	2722 kg	6,000 lb	3629 kg	8,000 lb	4536 kg	10,000 lb	5443 kg	12,000 lb	
Maximum (max.) Ground Bearing Pressure (Solid Tires)	1207 kPa	175 psi	1276 kPa	185 psi	1551 kPa	225 psi	1586 kPa	230 psi	
Maximum (max.) Ground Bearing Pressure (Pneumatic Tires)	965 kPa	140 psi	1034 kPa	150 psi	1172 kPa	170 psi	1207 kPa	175 psi	
Maximum Lift Height	12.8 m	42.1 ft	12.8 m	42.1 ft	16.6 m	54.6 ft	16.6 m	54.6 ft	
Maximum Forward Reach	8.4 m	27.6 ft	8.4 m	27.6 ft	12.5 m	41.0 ft	12.5 m	41.0 ft	
Frame Leveling	10°		10°		10°		10°		
Travel Speed – Forward (max.)	30 kph	19 mph	31 kph**	20 mph**	30 kph**	18 mph**	30 kph**	18 mph**	
Travel Speed – Reverse (max.)	22 kph	14 mph	22 kph**	14 mph**	22 kph**	13 mph**	22 kph**	13 mph**	
Drawbar Pull – Loaded (calculated)	93.7 kN	21,064 lbf	129.8 kN**	29,179 lbf**	129.7 kN**	29,157 lbf**	130 kN**	29,225 lbf**	
Capacity at Maximum Height	2722 kg	6,000 lb	2722 kg	6,000 lb	2268 kg	5,000 lb	2268 kg	5,000 lb	
Capacity at Maximum Reach	408 kg	900 lb	771 kg	1,700 lb	1361 kg	3,000 lb	1588 kg	3,500 lb	
Turning Radius over Tires (2-wheel steer)	6.64 m	261 in	6.64 m	261 in	6.57 m	259 in	6.57 m	259 in	
Turning Radius over Tires (circle/4-wheel steer)	3.97 m	156 in	3.97 m	156 in	3.98 m	157 in	3.98 m	157 in	

*Operating Specifications and Dimensions are based on 55 kW (74 hp) engine, pneumatic tires, open canopy, 1829 mm (72in) standard carriage, 1829 mm (72 in) forks, full fluids, and 80 kg (176 lb) operator.

**Travel Speeds and Drawbar Pull are based on the 86 kW (115 hp) engine.

WEIGHT ADDITIONS*									
	TH0642		TH0842		TH1055		TH1255		
86 kW (115 hp) Engine	—	—	88 kg	194 lb	88 kg	194 lb	88 kg	194 lb	
Enclosed Cab (with Air Conditioning)	165 kg	364 lb	165 kg	364 lb	165 kg	364 lb	165 kg	364 lb	
Solid Tires	788 kg	1,737 lb	788 kg	1,737 lb	864 kg	1,905 lb	864 kg	1,905 lb	
Fenders (set of 4)	54 kg	119 lb	54 kg	119 lb	54 kg	119 lb	54 kg	119 lb	

*Add to base configured weight.

TH0642/TH0842/TH1055/TH1255 Telehandler Specifications

HYDRAULIC SYSTEM									
	TH0642		TH0842		TH1055		TH1255		
System Operating Pressure	280 bar	4,061 psi	280 bar	4,061 psi	280 bar	4,061 psi	280 bar	4,061 psi	
Auxiliary Hydraulic Pressure	280 bar	4,061 psi	280 bar	4,061 psi	280 bar	4,061 psi	280 bar	4,061 psi	
Maximum Pump Flow	141 lpm	37 gpm	141 lpm	37 gpm	141 lpm	37 gpm	141 lpm	37 gpm	
Auxiliary Hydraulic Flow	55 lpm	14.5 gmp	55 lpm	14.5 gmp	55 lpm	14.5 gmp	55 lpm	14.5 gmp	
Variable displacement load sensing axial piston pump									

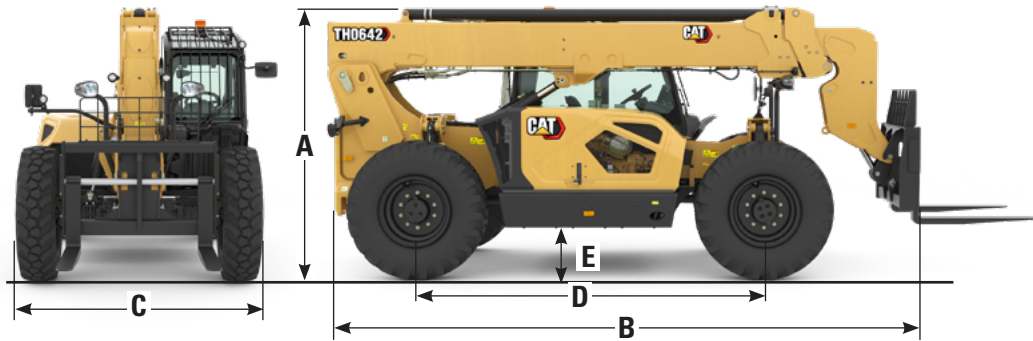
SERVICE REFILL CAPACITIES									
	TH0642		TH0842		TH1055		TH1255		
Fuel Tank	146 L	39 gal	146 L	39 gal	146 L	39 gal	146 L	39 gal	
Diesel Exhaust Fluid (DEF) Tank*	—	—	19 L	5.0 gal	19 L	5.0 gal	19 L	5.0 gal	
Hydraulic Tank	90 L	24 gal	90 L	24 gal	90 L	24 gal	90 L	24 gal	
Hydraulic System	165 L	44 gal	165 L	44 gal	165 L	44 gal	165 L	44 gal	
Engine Crankcase	9.0 L	2.4 gal	9.0 L	2.4 gal	9.0 L	2.4 gal	9.0 L	2.4 gal	
Transmission	20 L	5.3 gal	20 L	5.3 gal	20 L	5.3 gal	20 L	5.3 gal	
Transfer Case	2.7 L	0.7 gal	2.7 L	0.7 gal	2.7 L	0.7 gal	2.7 L	0.7 gal	
*Only applicable for 86 kW (115 hp) engine option.									

TRANSMISSION SPEEDS				
	TH0642	TH0842	TH1055	TH1255
Forward	4 Gears	4 Gears	4 Gears	4 Gears
Reverse	3 Gears	3 Gears	3 Gears	3 Gears

BOOM PERFORMANCE/CYCLE TIMES				
	TH0642	TH0842	TH1055	TH1255
Boom Up	12.8 sec	12.8 sec	14.5 sec	16.4 sec
Boom Down	14.2 sec	14.2 sec	14.9 sec	18.1 sec
Tele Out	14.2 sec	14.2 sec	20.5 sec	20.5 sec
Tele In	13.3 sec	13.3 sec	19.4 sec	19.4 sec

TH0642/TH0842 Telehandler Specifications

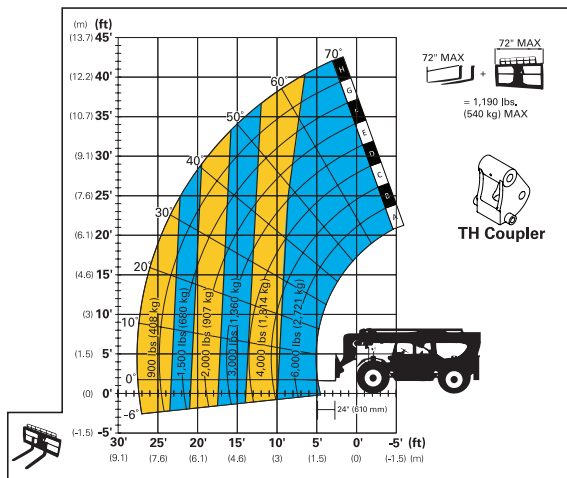
Dimensions (All dimensions are approximate.)



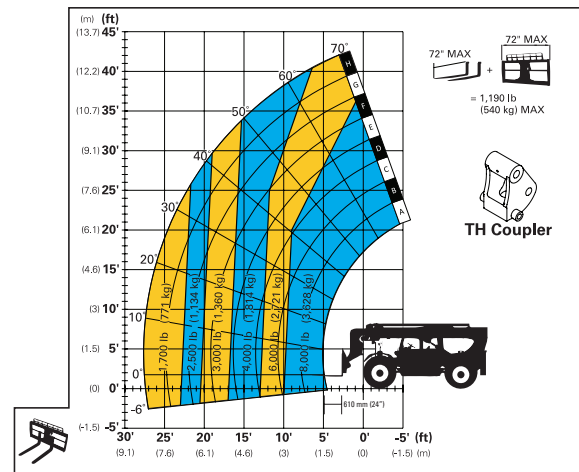
	TH0642		TH0842	
A Height – Machine Rear	2.59 m	102 in	2.59 m	102 in
B Overall Length to Front of Carriage	5.83 m	229 in	5.89 m	232 in
C Overall Width – Standard Tires	2.36 m	93 in	2.36 m	93 in
D Wheel Base	3.32 m	131 in	3.32 m	131 in
E Ground Clearance	473 mm	19 in	473 mm	19 in

Load Chart and Dimensions

TH0642



TH0842



IMPORTANT

Rated lift capacities shown are for a machine equipped with the specified carriage and forks. Load Chart is for reference only, not intended for machine operation.

The machine must be level on a firm surface with undamaged, properly inflated tires. Machine specifications and stability are based on rated lift capacities at specific boom angles and boom lengths. (If specifications are critical, the proposed application should be discussed with your dealer.)

DO NOT exceed rated lift capacity loads, as unstable and dangerous machine conditions will result.

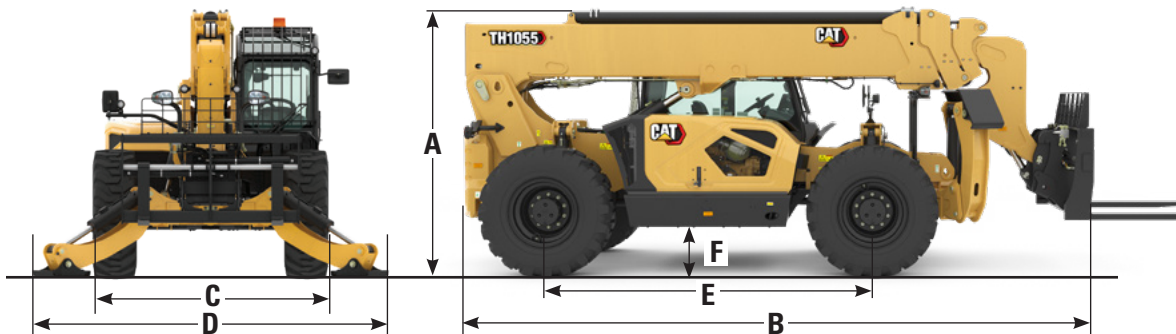
DO NOT tip the machine forward to determine the allowable load.

Use only approved attachments with proper material handler model/attachment load capacity charts displayed in the operator's cab.

Due to continuous product enhancements, machine specifications and/or equipment changes may be made without prior notification. This machine meets or exceeds ANSI/ITSDF B56.6-2021, as originally manufactured for intended applications.

TH1055/TH1255 Telehandler Specifications

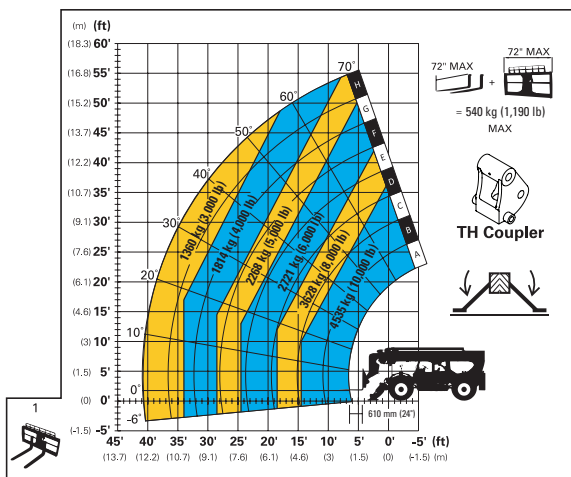
Dimensions (All dimensions are approximate.)



	TH1055		TH1255	
A Height – Machine Rear	2.68 m	106 in	2.68 m	106 in
B Overall Length to Front of Carriage	6.4 m	252 in	6.4 m	252 in
C Overall Width – Standard Tires	2.47 m	97 in	2.47 m	97 in
D Overall Width – Stabilizers Down	3.7 m	146 in	3.7 m	146 in
E Wheel Base	3.32 m	131 in	3.32 m	131 in
F Ground Clearance	453 mm	18 in	453 mm	18 in

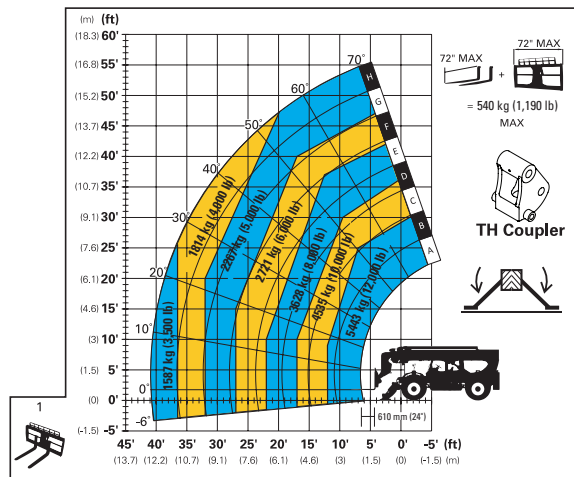
Load Chart and Dimensions

TH1055

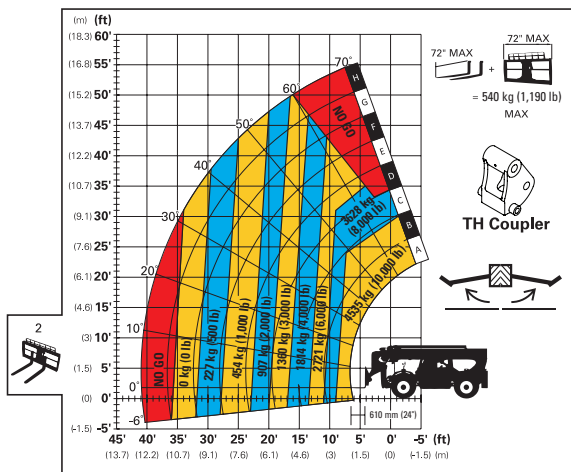


Outriggers Down

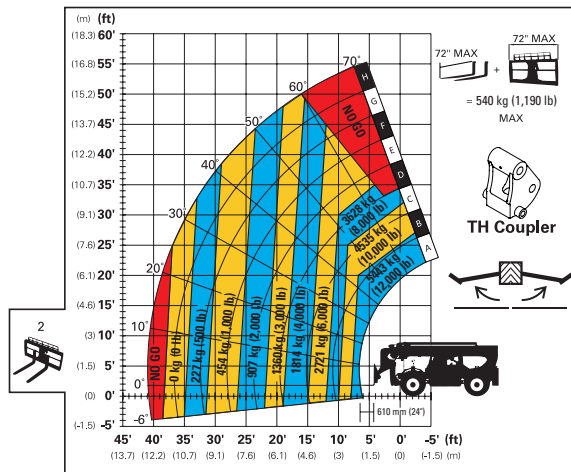
TH1255



Outriggers Down



Outriggers Up



Outriggers Up

TH0642/TH0842/TH1055/TH1255 Telehandler Specifications

STANDARD AND OPTIONAL EQUIPMENT

Standard and optional equipment may vary. Consult your Cat dealer for details.

ENGINE	TH0642	TH0842	TH1042	TH1255	FENDERS	TH0642	TH0842	TH1042	TH1255
55 kW (74 hp)	●	●	●	●	Cab Fender (Left Hand Front)	●	●	●	●
86 kW (115 hp)	N/A	○	○	○	Fenders (4 Wheels)	○	○	○	○
COLD WEATHER	TH0642	TH0842	TH1042	TH1255	GUARDING	TH0642	TH0842	TH1042	TH1255
Battery disconnect with lockout feature	●	●	●	●	Window guard, front	○	○	○	○
Cold Weather Package	○	○	○	○	Window guard, top	○	○	○	○
Dual Battery, heavy duty	○	○	○	○	OTHER	TH0642	TH0842	TH1042	TH1255
Engine Block Heater	○	○	○	○	Frame cover	●	●	●	●
Ether Starting Aid	○	○	○	○	Retrieval hitch	●	●	●	●
OPERATOR STATION	TH0642	TH0842	TH1042	TH1255	Boom prop	○	○	○	○
Canopy	●	●	●	●	LIGHTS	TH0642	TH0842	TH1042	TH1255
Enclosed Cab, heat	○	○	○	○	LED work lights – cab, boom	●	●	●	●
Enclosed Cab, heat, air conditioner	○	○	○	○	Beacon	○	○	○	○
OPERATING ENHANCERS	TH0642	TH0842	TH1042	TH1255	Roading Lights	○	○	○	○
Operator Presence Seat Switch	●	●	●	●	TELEMATICS	TH0642	TH0842	TH1042	TH1255
Camera, rearview	●	●	●	●	PLE643 – Product Link™ Elite	●	●	●	●
Load Stability Indicator (LSI)	●	●	●	●	TIRES	TH0642	TH0842	TH1042	TH1255
OPERATOR SEAT	TH0642	TH0842	TH1042	TH1255	Galaxy – pneumatic directional	○	○	○	○
Seat – Mechanical Suspension	●	●	●	●	Camso – solid directional	○	○	○	○
Seat – Mechanical Suspension Plus	○	○	○	○	Maxam – solid non-directional	○	○	○	○
SEAT BELT	TH0642	TH0842	TH1042	TH1255	AXLES AND BRAKES	TH0642	TH0842	TH1042	TH1255
Seat Belt – 51 mm (2 in)	●	●	●	●	Trunnion Mounted Planetary 55-degree steer axles	●	●	●	●
Seat Belt – 75 mm (3 in)	○	○	○	○	High bias limited slip differential on front axle	●	●	●	●
Seat Belt with Indicator – 75 mm (3 in)	○	○	○	○	Service Brakes: Inboard wet disc brakes on front and rear axles	●	●	●	●
OPERATOR STATION ACCESSORIES	TH0642	TH0842	TH1042	TH1255	Parking Brakes: Wet disc, spring applied hydraulic release (front axle)	●	●	●	●
USB dual charging port (USB-A and USB-C)	●	●	●	●	ATTACHMENT COUPLER	TH0642	TH0842	TH1042	TH1255
Security, 4 digit operator code enabled	●	●	●	●	TH Coupler (Manual)	●	●	●	●
Security, Bluetooth® key	○	○	○	○	IT Coupler (Manual)	○	○	○	○
Hydraulic lockout switch	○	○	○	○	IT Coupler (Hydraulic)	○	○	○	○
Wiper, Front (enclosed cab only)	●	●	●	●	● – standard ○ – optional				
Wiper, Rear (enclosed cab only)	○	○	○	○					
Wiper, Roof (enclosed cab only)	○	○	○	○					
Sunshade (top window)	○	○	○	○					
Padlocks (set of 4)	○	○	○	○					

(continued on next page)

TH0642/TH0842/TH1055/TH1255 Telehandler Specifications

STANDARD AND OPTIONAL EQUIPMENT *(continued)*

Standard and optional equipment may vary. Consult your Cat dealer for details.

AUXILIARY HYDRAULIC CONNECTIONS	TH0642	TH0842	TH1042	TH1255
Capped auxiliary hydraulic lines	●	●	●	●
Twist to connect hydraulic quick disconnects	⦿	⦿	⦿	⦿

CARRIAGE	TH0642	TH0842	TH1042	TH1255
Standard – 1270 mm (50 in)	⦿	⦿	⦿	⦿
Standard – 1829 mm (72 in)	⦿	⦿	⦿	⦿
Side Tilt/Rotating – 1270 mm (50 in)	⦿	⦿	⦿	⦿
Side Tilt/Rotating – 1829 mm (72 in)	⦿	⦿	⦿	⦿
Hydraulic Fork Positioner – 1829 mm (72 in)	⦿	⦿	⦿	⦿

FORKS	TH0642	TH0842	TH1042	TH1255
Pallet Forks – 1220 mm (48 in)	⦿	⦿	⦿	⦿
Pallet Forks – 1525 mm (60 in)	⦿	⦿	⦿	⦿
Pallet Forks – 1829 mm (72 in)	⦿	⦿	⦿	⦿
Pallet Forks – 2400 mm (96 in)	N/A	○	○	○
Cubing/Block Forks – 1220 mm (48 in)	○	○	○	○
Lumber Forks – 1525 mm (60 in)	○	○	○	○

OTHER WORK TOOL ATTACHMENTS	TH0642	TH0842	TH1042	TH1255
General Purpose Bucket	⦿	⦿	⦿	⦿
Truss Boom – 3.7 m (12 ft)	⦿	⦿	⦿	⦿
Grapple Bucket	○	○	○	○
Material Handling Arm	○	○	○	○
Pipe and Pole Fork Grapple	○	○	○	○
Lifting Hook (Coupler Mtd)	○	○	○	○

● – standard ⦿ – optional ○ – future availability

NOTES

NOTES

For more complete information on Cat products, dealer services and industry solutions, visit us on the web at www.cat.com

© 2025 Caterpillar. All Rights Reserved.

VisionLink is a trademark of Caterpillar Inc., registered in the United States and in other countries.

Materials and specifications are subject to change without notice. Featured machines in photos may include additional equipment. See your Cat dealer for available options.

CAT, CATERPILLAR, LET'S DO THE WORK, their respective logos, "Caterpillar Corporate Yellow," the "Power Edge" and Cat "Modern Hex" trade dress as well as corporate and product identity used herein, are trademarks of Caterpillar and may not be used without permission.

www.cat.com www.caterpillar.com

AEHQ8526-00 (12-2025)
Build Number: 01A

