

# 6015

## HYDRAULIC MINING SHOVEL



---

<b>Engine:</b>	Cat® C27
<b>Engine output:</b>	615 kW / 824 HP
<b>Operating Weight:</b>	140 tonnes / 154.3 tons
<b>Bucket Payload:</b>	14.6 tonnes / 16.1 tons





CAT® HYDRAULIC  
MINING SHOVELS

# HIGH LEVELS OF DIGGING PERFORMANCE

When you need a durable digger to power through the toughest materials, our broad lineup of hydraulic mining shovels delivers. They've built a name for withstanding the harshest digging conditions on sites around the world, and we're working hard to make sure they keep meeting your expectations for reliable, predictable, efficient and productive performance. Each comes with the total package you expect from Caterpillar: deep product expertise, unmatched after-sale support and a commitment to help you squeeze more value and profit out of your entire load/haul system.









# CAT<sup>®</sup> 6015

## HYDRAULIC MINING SHOVEL





## MORE TIME TO LOAD MORE

The next generation Cat 6015 Hydraulic Mining Shovel lets you move more material at a low cost, so you can achieve production targets, deliver on your commitments, meet deadlines and maximize your profitability. With class-leading tool carrying capacity, increased durability and the most powerful engine in its class, the Cat 6015 generates higher productivity and fuel efficiency than other shovels. And it's offered with more and better options that let you match your machine to your operation—from access and cold weather packages to multiple stick and track pad options. In addition, a large range of buckets is available, giving you optimum payload and machine efficiency for your operation. And the 6015's high tool carrying capacity gives you the ability to employ large buckets and move more in fewer cycles.

### IMPROVED PRODUCTIVITY\*

- » Proven pass match with 100t-class trucks
- » Improved productivity in high altitude applications\*
- » Higher annual output\*

### INCREASED UPTIME\*

- » New standard bucket linkage Autolube eliminates need for manual lubrication, as well as the manual grease wheel
- » New slew bearing with triple roller design
- » New standard grease tank with increased capacity for 500-hour intervals

### STREAMLINED SERVICE

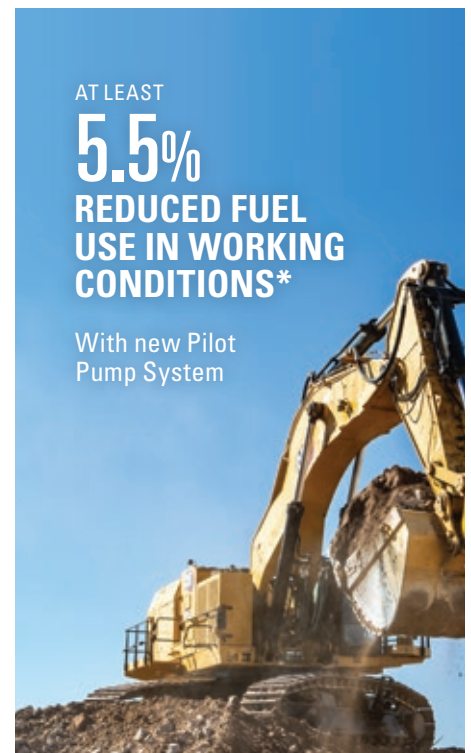
- » Improved hose routing\*
- » Cat dealer hose manufacturing
- » Increased parts commonality with other Cat machines
- » New 1234yf refrigerant meets updated refrigerant requirements

*\*Compared to previous model*

AT LEAST

**5.5%**  
**REDUCED FUEL  
USE IN WORKING  
CONDITIONS\***

With new Pilot  
Pump System





# LOAD MORE EVERY CYCLE



The 6015 is a productive performer driven by the most powerful engine in its size class. The C27 is a reliable, durable engine that delivers top performance over a long life in a variety of applications, including heavy construction, quarry and aggregates, and mining. It can be equipped with a number of emissions reduction solutions, allowing it to meet the most stringent emissions requirements without the need for DEF.

---

## FASTER CYCLE TIMES

The 6015 uses energy-efficient float valves that incorporate gravitational force to help lower the boom. This requires less power and allows the boom to swing faster. It also allows operators to perform other functions like bucket curl and stick in/out while lowering the boom, further reducing cycle times.

---

## INCREASED OPERATIONAL CONTROL

The Proportional Priority Pressure Compensating (PPPC) hydraulic system varies hydraulic oil flow, resulting in smooth, predictable operation and greater efficiency. Using four hydraulic pumps—three for implement and travel and one for swing—with advanced controls reduces heat build-up and reduces wear. Automatic flow proportioning ensures that the right amount of power goes where it's needed in multifunction operations.



## REDUCED FUEL BURN

The 6015 is designed for efficient operation, with features to help reduce fuel burn and better manage hydraulic power.

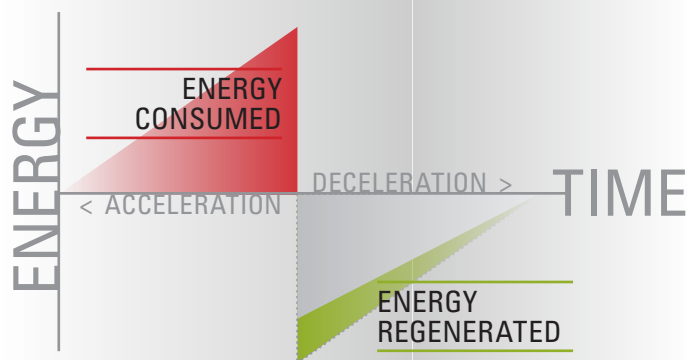
- + Load Enhanced Anticipatory Control (LEAC) ensures faster and more consistent engine regulation by preventing lug, which, in turn, reduces fuel consumption.
- + Engine Torque Load Control (ETLC) reduces hydraulic pump output based on available engine torque, desired engine speed, actual engine speed and estimated hydraulic load — providing power to the functions that need it to move material quickly and efficiently.
- + Next-generation Pilot Pump configuration offers variable, on-demand hydraulic flow. The pump increases flow when the control levers are moved, then reduces it when controls are returned to neutral. This results in at least 5.5% better fuel efficiency and improved performance.

## LOWER COSTS BY BOOSTING EFFICIENCY

### CAPTURED ENERGY

The Closed-loop Swing System delivers faster cycle times and improved energy efficiency, while also generating less heat. Kinetic energy captured during the swing motion is fed back into the system during deceleration, providing more power to drive the main and auxiliary pumps. The system:

- + Uses pumps to decelerate
- + Uses energy instantaneously
- + Creates less heat
- + Lowers engine load factor
- + Reduces fuel consumption







## FULL INTEGRATION: THE CATERPILLAR ADVANTAGE

The 6015 is a 100% Caterpillar machine, built from the ground up to deliver the performance you need and the reliability you expect from a manufacturer you trust. We've also simplified and standardized service documentation to make it easier to keep your machine running.

---

### PROVEN AND VALIDATED ELECTRONICS

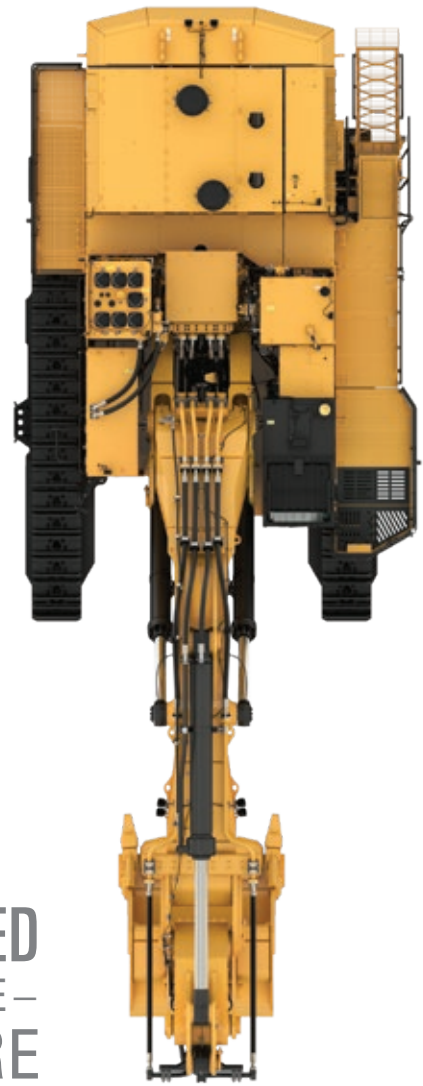
The integration of proven and validated Cat electronics delivers additional performance and reliability advantages. Intuitive, informative onboard electronics help operators be more productive. Common designs and componentry streamline maintenance. Connectivity features and integrated Cat MineStar™ Health offerings help you adopt a proactive approach to maintenance to keep your shovel on the job.

---

### HIGHER UPTIME

The Caterpillar advantage also means higher uptime for your operation. Parts are stocked around the world for fast, efficient service. Service literature is easy to read and understand so technicians have the information they need to perform maintenance and repairs as quickly as possible. And like all Cat equipment, the 6015 is backed by the Cat dealer network for a seamless level of unparalleled support.





## DESIGNED — FOR THE — FUTURE

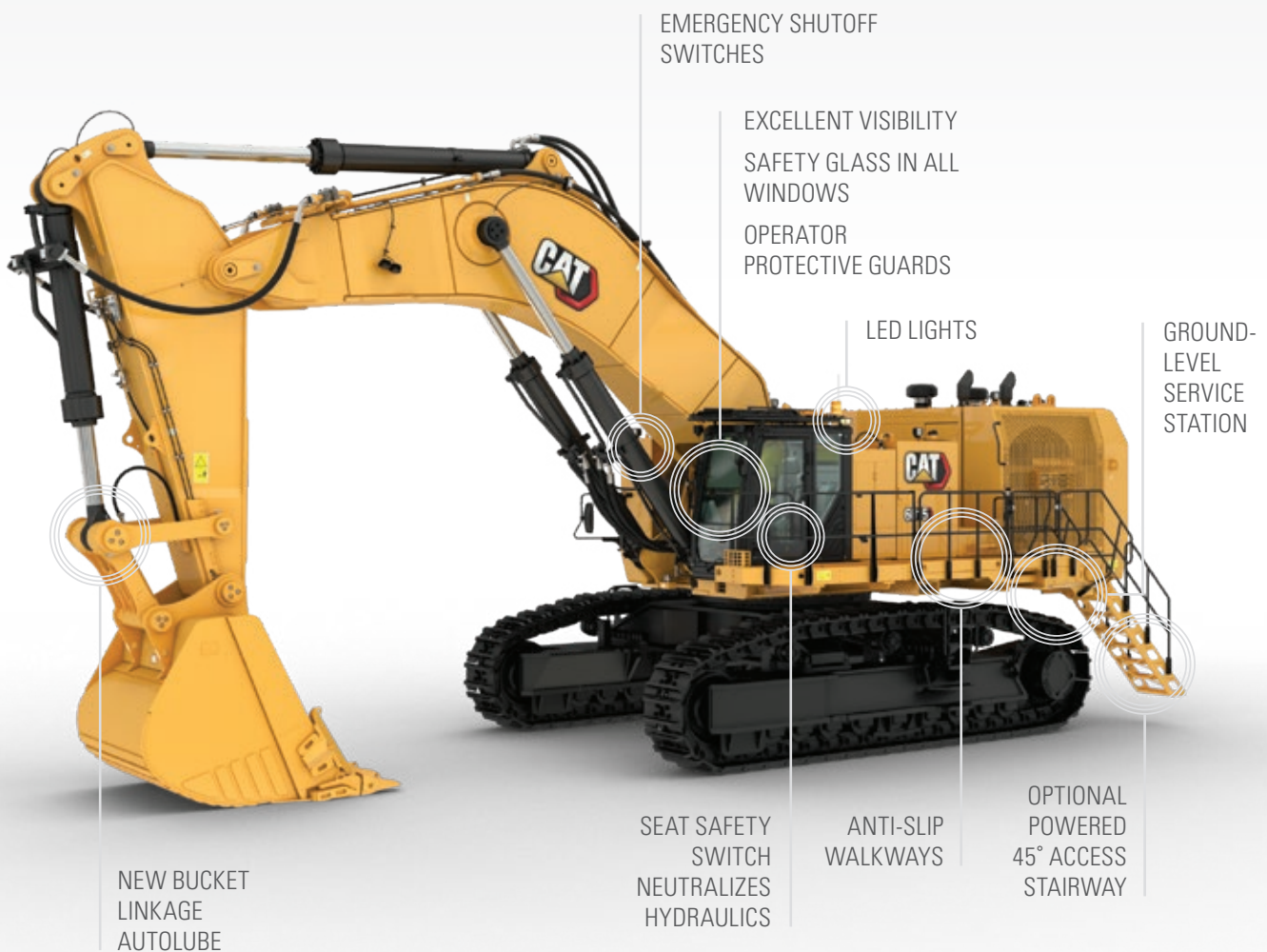
Next-generation Cat Hydraulic Mining Shovels are built using an optimized electronic architecture that supports productivity, safety and reliability improvements today — and provides a platform for seamless integration of future technologies. This architecture impacts nearly every aspect of the shovel, delivering performance and reliability benefits by integrating proven and validated Cat electronics.

The system is also common with other Cat machines, which reduces the number of parts you need to keep on hand and allows service personnel and Cat dealers to leverage knowledge from other products to support your machine.

## FOCUS ON SAFETY

### IN, ON AND AROUND THE SHOVEL

The 6015 is packed with features that help keep operators, service personnel and other people working on your site safe. With improved visibility, safer access and egress, no-slip walkways and five emergency shut-off switches, it's designed from the ground up with safety in mind.







## CAT VISION 360

Vision 360 is an optional system that increases safety by improving visibility around the machine.

The system integrates four cameras to give the operator a 360-degree surround view of their shovel.

Operators can see the view through the in-cab touchscreen display, which allows them to toggle between views and provides the ability to focus on specific areas to increase safety or productivity.

Vision 360 reduces blind spots and repositioning, alleviates potential safety hazards and lowers cycle times. These benefits increase operator confidence and efficiency, while reducing fatigue.



## STANDARD AUTOMATIC LUBRICATION SYSTEM

- + Automatically greases slew bearing, attachment pivot points and bucket linkage
- + New high capacity (251L) grease tank can be filled from ground level

## IMPROVED SWING SYSTEM

- + Triple-race swing roller bearing with sealed internal gearing
- + Automatically lubricated with grease lines outside the swing ring
- + Swing bearing mounted directly to the carbody for reduced stress on top chord





# A SHOVEL YOU CAN COUNT ON

The 6015 is a tough, reliable shovel that delivers the performance you need and the uptime you demand. Every component is validated over hundreds of hours, and proven on sites all over the world.

## ROBUST STRUCTURES

The 6015's major structures are designed to exacting standards and made with high-strength steel and castings. The boom and stick are stress-relieved after welding, and welds at critical junctures are profiled and grounded. This results in a long, productive service life and higher uptime. It also features a more robust final drive and flex couplings, as well as more durable hoses and tubes.

- + Improved hydraulic system reduces crosstalk and cross-contamination
- + New suction header and swing pump improve inlet routing
- + Heavy-Duty track group handles high field loads with hardened roller dowels, improved idler design, and larger bushings
- + New engine enclosure with removable top for improved access to engine and pump areas, as well as enhanced fit-up of engine and hydraulic barriers
- + New slew bearing with triple roller design for increased durability





## HEAVY-DUTY UNDERCARRIAGE

A rugged, heavy-duty undercarriage delivers increased uptime, longer service life and smoother tramming over rough terrain. With grease lubrication, GLT4 sealing technology and oil-filled rolling components, this undercarriage can last at least 2,000 hours longer than dry track designs.



## VISUALIZING HOSE PERFORMANCE

Virtual design and validation of improvement opportunities included a rigorous hose audit performed by Cat engineers that has yielded excellent results. In addition to being better organized and routed to streamline service, the hoses are performing well — working more than 10,000 hours without a single major hydraulic leak.

## POSITIVE PIN RETENTION

Our exclusive Positive Pin Retention 2 track design mechanically locks the link to the pin, helping the machine resist pin walking and link cracking for reliable sealing and maximum track life.

# More time loading. Less time servicing.

The 6015 is designed to be faster and easier to service, so your machine can get back to work quickly.

With enhanced warning levels for hydraulic oil temperature, visual inspection ports for slew drive pinions and ring gear and a ground-level service station with easy access to refill points, it's easier than ever to perform routine maintenance. Electronic troubleshooting is also easier thanks to Cat Electronic Technician, which helps dealer service personnel diagnose and prevent issues. We've also made a number of recent enhancements to directly address customer feedback, including a larger, heavier hydraulic tank. We've also increased the size of the grease tank, extending the service interval to 500 hours. The engine enclosure and main control valve mounting bracket are more durable, and we've improved the hydraulic system to increase reliability.



---

## SERVICE STATION

The ground-level service station provides easy access to functions such as coolant, hydraulic oil, slew gear box oil, grease, diesel and engine oil. The service station features an emergency shutoff, Cat battery charging connector and indicator lights for full fuel tanks. Swing and travel functions are disabled when the service station is lowered.

- + Comfortable height
- + Improved access to all functions
- + Fast fill connections





## GET CONNECTED TO REDUCE DOWNTIME

One of the key benefits of full Cat integration is the ability to connect the 6015 to industry-leading technologies and services offerings that improve maintenance and reduce downtime of your machine.

Key to connectivity is an improved Product Link™ Elite system, which boosts connectivity and increases the availability of data provided by the 6015. The on-board hardware enables your shovel to collect and transmit information into locally hosted or cloud-hosted applications such as Cat MineStar™ Solutions Health Office, Health Equipment Insights, Equipment Care Advisor or Vision Link.

The system opens the door for industry-leading equipment health and condition monitoring services from Caterpillar and your local Cat dealer. In addition, service personnel have access to Cat Electronic Technician, which enables easy diagnosis of potential engine problems and can help prevent future issues.





# GAIN AN EDGE

## WITH TECHNOLOGY SOLUTIONS

A number of on-board and optional technology offerings are available to help you boost the productivity, efficiency and health of your Cat 6015.



---

## CAT MINESTAR™ SOLUTIONS

The 6015 is factory-ready for Cat MineStar solutions, an integrated suite of operations and equipment management technologies that can improve the productivity, efficiency and safety of your operation.

- + Health delivers critical event-based machine condition and operating data for your entire fleet. It includes comprehensive equipment health and asset monitoring capabilities, with a wide range of diagnostic, analytic and reporting tools.
- + Fleet provides real-time machine tracking, assignment and productivity management, providing a comprehensive overview of all your asset operations from anywhere in the world.
- + Terrain enables guidance technology and high-precision management of loading operators to increase machine efficiency. Efficiency is also improved through realtime feedback.
- + Detect helps increase operator awareness, enhancing safety at your operation. It includes a range of capabilities designed to assist the operator, including blind spot and proximity detection of fixed and mobile equipment.

### SHOVEL TECHNOLOGY SOLUTIONS

A number of specific shovel technology solutions are available on the 6015.

The Monitoring and Diagnostic System enhances diagnostic capabilities and provides detailed troubleshooting functions.

The Board Control System uses sensors throughout the machine to monitor operating data, record faults, and notify the operator audibly and visually. This promotes the earliest possible detection of faults and allows for timely maintenance planning and assistance for speedy repair.





# KEEP OPERATORS **COMFORTABLE AND PRODUCTIVE**

We understand that the most important factor in your hydraulic shovel's effectiveness is the performance of its operator. To help make their workday as productive as possible, we've developed a cab that keeps operators safe, comfortable and in control.

Designed by operators for operators, this state-of-the-art cab has everything operators need to work harder and last longer.

---

## IN-CAB COMFORT

The heated, pneumatically cushioned, fully adjustable suspension seat gives operators the comfort and support they need to stay focused and productive for an entire shift. With adjustable lumbar support, wide arm and wrist rests and a wide, retractable seatbelt, it helps minimize fatigue and keep operators alert.

The in-cab air-conditioning, heat and defroster keep the ambient temperature comfortable, and improved filtration removes dust and particles from the operator environment. A second internal filter further purifies the air recirculated inside the cab.

---

## DESIGNED FOR CONTROL

The 6015 features ergonomic joysticks with electro-hydraulic servo control, giving operators dynamic, precise control of the machine without the need for hydraulic lines in the cab. The joystick consoles themselves can be changed between a number of patterns to better suit operator preference. The cab also features a 7-inch (178 mm) touchscreen that offers easy access to critical machine information and service assistance.



---

# MINING — FOR A — BETTER WORLD

---

Governments and regulatory agencies mandate that you establish and follow environmentally sound policies and practices as you meet the demand for mined materials. We're focused on doing our part to make sure our shovels help you meet those regulations.

The 6015 is designed to burn less fuel and meet the strictest emissions standards without the need for DEF—which also saves you time and cost during maintenance. The LEAC system helps reduce fuel consumption without decreasing performance, and a sound-suppressed power module even reduces sound levels for operations working in populated areas.

The 6015 is also built to be rebuilt, enabling it to achieve multiple lives of like-new performance while preserving the raw materials, energy and emissions that would have gone into building a new machine.



Our commitment to your success doesn't end when your Cat 6015 begins loading overburden or ore. We immediately start looking for ways to make your shovel work more efficiently, safely and productively. From addressing performance issues, to training operators and technicians, to calibrating onboard technologies — our support of your shovel productivity is ongoing.



# SUPPORTING PRODUCTS — AND PRODUCTIVITY





## SUPPORT FOR THE COMPLETE EQUIPMENT LIFECYCLE

No one knows more about how to get the most from a piece of Cat equipment than Caterpillar and your local Cat dealer. Our partnership starts with validation and testing of the machine and continues through the complete lifecycle of the shovel.

The one-of-a-kind Cat dealer support network delivers expert service, integrated solutions, after-sales support, fast and efficient parts fulfillment, world-class rebuild and remanufacturing capabilities and more. Cat dealers operate as nearly 200 local businesses — each one fully embedded in and committed to the geographic area it serves. That means you work with people you know, who know your business, and who respond on your timeframe.

Caterpillar and Cat dealer personnel will partner with you on site to improve the performance not only of your shovels but of your overall loading and hauling operation. You'll have access to parts and service, as well as technicians who are focused on helping you optimize repairs to keep machines productive. And we help with training to ensure your operators have the skills and knowledge they need to work as efficiently and productively as possible.

We also work alongside you to ensure you achieve maximum value throughout the life of your equipment. Together with our Cat dealer network, we customize service offerings to provide a maintenance solution that fits your operation — whether you want to perform the majority of service yourself, or you're looking for an onsite partner to manage your maintenance organization. We're also consultants who can help you make smart decisions about buying, operating, maintaining, repairing, rebuilding and replacing equipment.

BETTER  
LOADING  
BETTER  
HAULING  
**BETTER  
BOTTOM  
LINE**

With a broad lineup of hydraulic mining shovels and a truck for every site or application — no matter the size class or drive system — Caterpillar delivers a complete loading and hauling solution that delivers the lowest cost per ton. Trucks and loaders are ideally matched to optimize the loading and hauling cycle. From iron to engines, hydraulics to electronics, software to hardware, transmissions to ground engaging tools — systems work together to deliver optimized performance and a better bottom line.





772 **3** PASSES



773 **4** PASSES



775 **4** PASSES



777 **6** PASSES



785 **9** PASSES



# 6015

**TRUCK-SHOVEL MATCH**

THE 6015 IS SUITED TO  
LOAD A RANGE OF TRUCKS.



# GET THE RIGHT OPTIONS FOR THE JOB

The 6015 can be fitted with a variety of buckets and Ground Engaging Tools (GET), all designed to maximize durability and productivity. This includes a set of hammerless GET designed specifically to work with the 6015, which can be installed and removed without using specialized tools

Our buckets and GET are integrated to work as part of the complete machine system, helping you achieve a low cost per ton.

## BUCKETS

Cat Hydraulic Mining Shovel buckets are designed to maximize durability and productivity. We have the right bucket size ideally matched to your shovel and your application.

### BACKHOE BUCKET OPTIONS

Heavy Rock	Standard Rock	Standard Rock	Coal
7.4 m <sup>3</sup>	8.1 m <sup>3</sup>	8.6 m <sup>3</sup>	10.4 m <sup>3</sup>
9.7 yd <sup>3</sup>	10.6 yd <sup>3</sup>	11.2 yd <sup>3</sup>	13.6 yd <sup>3</sup>

Capacity Heaped 1:1 (ISO 7546)



---

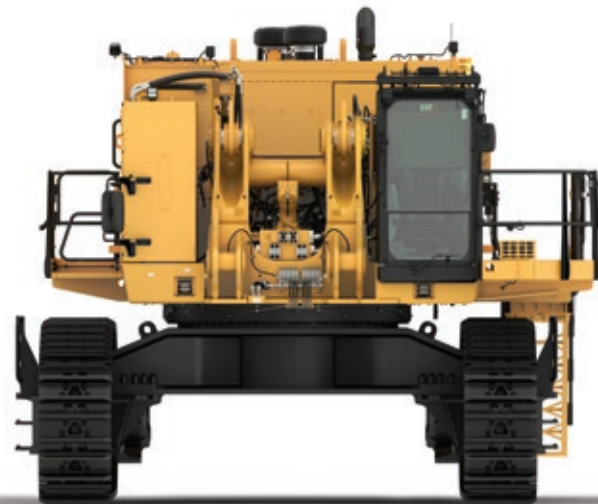
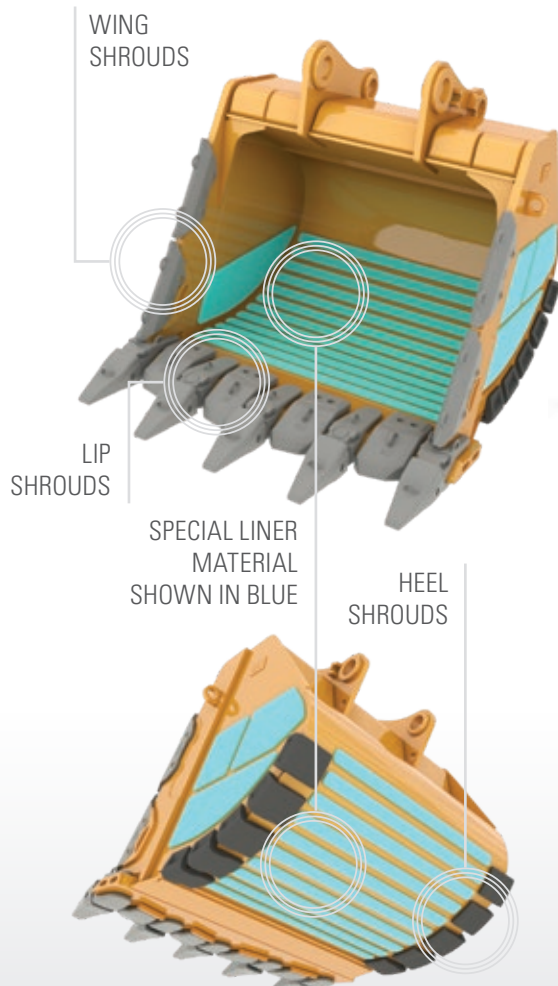
## GET SYSTEM

### WEAR PACKAGE

All buckets are equipped with a wear package that keeps you productive while protecting your investment. The wear package consists of:

- + Special liner material covering main wear areas inside and outside of bucket
- + Shrouds to protect the specific areas from impact and abrasion
  - Lip shroud between teeth
  - Wing shrouds on outer corners of the side walls
  - Heel shrouds at bottom edges

Special wear packages for highly abrasive materials are available upon request



---

### EXPANDED OFFERINGS WITH SPECIALTY SOLUTIONS

- + Frontless shovel arrangements
- + Upper-only arrangements for fixed installations
- + Undercarriage and track arrangements

# TECHNICAL SPECIFICATIONS

See cat.com for complete specifications.

## DIESEL ENGINES – TIER 1

Make and Model	Cat® C27	
Rated Speed	1800 min <sup>-1</sup>	1,800 rpm
Gross Power – SAE J1995:2014	606 kW	812 hp
Net Power – ISO 9249:2007	599 kW	803 hp
» Equivalent to U.S. EPA Tier 1 emission standards.		
» Net power tested per ISO 9249 is the power available at the flywheel when the engine is equipped with alternator, cooling, air intake, and exhaust systems, with minimum fan losses.		

## DIESEL ENGINES – TIER 2 (CHINA NONROAD STAGE III)

Make and Model	Cat C27	
Rated Speed	1800 min <sup>-1</sup>	1,800 rpm
Gross Power – SAE J1995:2014	626 kW	839 hp
Net Power – ISO 9249:2007	618 kW	829 hp
» Meets China Nonroad Stage III emission standards, equivalent to U.S. EPA Tier 2.		
» Net power tested per ISO 9249 is the power available at the flywheel when the engine is equipped with alternator, cooling, air intake, and exhaust systems, with minimum fan losses.		

## DIESEL ENGINES – TIER 4 FINAL

Make and Model	Cat C27	
Rated Speed	1800 min <sup>-1</sup>	1,800 rpm
Gross Power – SAE J1995:2014	615 kW	824 hp
Net Power – ISO 9249:2007	606 kW	812 hp
» Meets U.S. EPA Tier 4 Final and EU Stage V emission standards.		
» Net power tested per ISO 9249 is the power available at the flywheel when the engine is equipped with alternator, cooling, air intake, and exhaust systems, with minimum fan losses.		

## ELECTRICAL SYSTEM

System Voltage	24 V	
Batteries in Series/Parallel Installation	4 × 200 Ah – 12 V each 150 A – 24 V in total	

## OPERATING WEIGHTS

6015 with Backhoe Attachment (BH)		
Standard Track Pads	700 mm	2 ft 4 in
Operating Weight*	140 000 kg	308,000 lb
Ground Pressure	16.3 N/cm <sup>2</sup>	23.6 psi

\*Operating weight includes: base machine, front attachment, 700 mm (28 in) track pads, 8.1 m<sup>3</sup> (10.6 yd<sup>3</sup>) standard rock bucket, 100% fuel and lubricants.

## SERVICE REFILL CAPACITIES

Fuel Tank Capacity	1700 L	449 gal
Hydraulic Oil Tank Capacity	956 L	253 gal
Total Volume of Hydraulic Oil	1752 L	463 gal
Engine Oil	87 L	23 gal
Engine Coolant	165 L	44 gal
Both Swing Drives and Reservoir	38 L	10 gal
Travel Gearbox	2 × 20 L	2 × 5.3 gal
Grease Tank Capacity	215 L	57 gal

## HYDRAULIC SYSTEM

Main Pumps	3 × variable swash plate pumps	
Maximum Oil Flow	1544 L/min	407 gal/min
Maximum Pressure, Attachment	320 bar	4,641 psi
Maximum Pressure, Travel	320 bar	4,641 psi
Swing Pumps	1 × variable swash plate pumps	
Maximum Oil Flow	479 L/min	127 gal/min
Maximum Pressure	365 bar	5,294 psi

## HYDRAULIC OIL COOLING

Maximum Oil Flow of Cooling Pumps	1075 L/min	284 gal/min
Number of Fans	1	
Diameter of Fan	1168 mm	46 in
Fan Speed	Thermostatically controlled	
Cooling System	Fully independent	

## SWING SYSTEM

Swing Drives	Two compact planetary transmissions with axial piston motors	
Parking Brake	Wet multiple-disc brake, spring-loaded/hydraulically released	
Maximum Swing Speed	4.9 RPM	
Swing Ring	Triple-race roller bearing with sealed internal gearing	
Swing Circuit	Closed-loop with torque control	

## UNDERCARRIAGE

Travel Speed (two stages)		
1st Stage – Maximum	2.6 km/h	1.6 mph
2nd Stage – Maximum	3.7 km/h	2.3 mph
Maximum Tractive Force	877 kN	197,157 lbf
Maximum Drawbar Pull	800 kN	179,847 lbf
Gradeability of Travel Drives – SAE J1309	38°/78% approximate	
Maximum Machine Inclination –Travel	23°/42%	
Track Pads (each side)	46	
Track Rollers (each side)	9	
Travel Drives (each side)	Planetary transmission with two-stage axial piston motor	
Parking Brake	Wet multiple disc brake, spring loaded/hydraulically released	



# STANDARD & OPTIONAL EQUIPMENT

Standard and optional equipment may vary. Consult your Cat dealer for details.

CAT POWER TRAIN	STANDARD	OPTIONAL
Cat C27 Engine	•	
Aftertreatment system (used in Tier 4 Final only):	•	
» Diesel Oxidation Catalyst (DOC)		
» NOx Reduction System (NRS)		
» Non-Diesel Exhaust Fluid (DEF) solution		
Hydraulically driven radiator fan	•	
Electronically controlled fan speed	•	
Two stage fuel filtration with water separator	•	
Automatic engine idle shut down	•	
HYDRAULICS	STANDARD	OPTIONAL
Power Management System with integrated controls:	•	
» Flow-on-demand management of implement/travel (3) and swing (1) pumps		
» Load Enhanced Anticipatory Control (LEAC) to prevent engine lug		
» Proportional Priority Pressure Compensating (PPPC) technology prioritizes pump flow and pressure to individual functions (boom, stick, and bucket)		
Pressure cut-off for main pumps	•	
Closed loop swing circuit	•	
Boom float valves and regeneration circuit	•	
ELECTRICAL SYSTEM	STANDARD	OPTIONAL
Four maintenance-free batteries	•	
14 LED high-brightness working flood lights	•	
5 LED service lights	•	
UNDERCARRIAGE	STANDARD	OPTIONAL
Positive Pin Retention (PPR2) sealed and greased track design	•	
Heavy Duty (HD) tracks with cast double-grouser track pads	•	
» 700 mm (2 ft 4 in) wide track pads		•
» 900 mm (3 ft 0 in) wide track pads		•
» 1000 mm (3 ft 3 in) wide track pads		•
Belly plate for additional undercarriage protection		•
HD fixed axle rollers	•	
HD fixed axle idlers	•	
Automatic hydraulic retarder valve	•	
Fully hydraulic self-adjusting track tensioning system with accumulator	•	

BACKHOE ATTACHMENT	STANDARD	OPTIONAL
Boom 7.6 m (24 ft 11 in)	•	
Stick 3.4 m (11 ft 2 in)		•
Stick 4.1 m (13 ft 5 in)		•
Frontless base machine (no boom, no stick, no linkage)		•
Bucket wear package	•	
OPERATOR ENVIRONMENT	STANDARD	OPTIONAL
Single HVAC system	•	
Pneumatically cushioned and multiadjustable comfort seat	•	
Independently adjustable seat consoles with integrated joysticks	•	
FM/AM radio with MP3 auxiliary port	•	
Roller blind at windshield	•	
Camera monitoring system VISION 360 (four cameras and additional color display)		•
Color LCD 178 mm (7") touchscreen	•	
CAT TECHNOLOGY	STANDARD	OPTIONAL
Cat Product Link™ Elite (Cellular)	•	
Cat Product Link Elite (Satellite)		•
Cat Product Link Elite (No radio)		•
Cat MineStar™ Solutions Ready	•	
COLD WEATHER	STANDARD	OPTIONAL
Cold Weather Package (120V; 60Hz)		•
Cold Weather Package (240V; 50 Hz)		•
SERVICE AND MAINTENANCE	STANDARD	OPTIONAL
Engine oil exchange interval – 500 hours	•	
Hydraulic oil change interval – 5,000 hours	•	
Final and swing drive maintenance interval (500 hours)	•	
Scheduled Oil Sampling (S-O-S <sup>SM</sup> ) ports	•	
Pilot pressure monitoring via Electronic Technician (ET)	•	
Centralized service area accessible from ground level for:	•	
» Diesel fuel		
» Grease		
SAFETY AND SECURITY	STANDARD	OPTIONAL
Emergency stop switches: one in cab, three in engine module, one pull rope accessible from ground level	•	
Operator Protective Guard (front guard)		•
Operator Protective Guard (top guard)	•	
Laminated front upper window and tempered glass other windows	•	
MISCELLANEOUS	STANDARD	OPTIONAL
ISO or ANSI decals	•	



# 6015 HYDRAULIC MINING SHOVEL

For more complete information on Cat products, dealer services and industry solutions, visit us at [www.cat.com](http://www.cat.com)

AEXQ4636

Materials and specifications are subject to change without notice. Featured machines in photos may include additional equipment. See your Cat dealer for available options.

© 2025 Caterpillar. All Rights Reserved. CAT, CATERPILLAR, LET'S DO THE WORK, their respective logos, "Caterpillar Corporate Yellow", the "Power Edge" and Cat "Modern Hex" trade dress as well as corporate and product identity used herein, are trademarks of Caterpillar and may not be used without permission.

